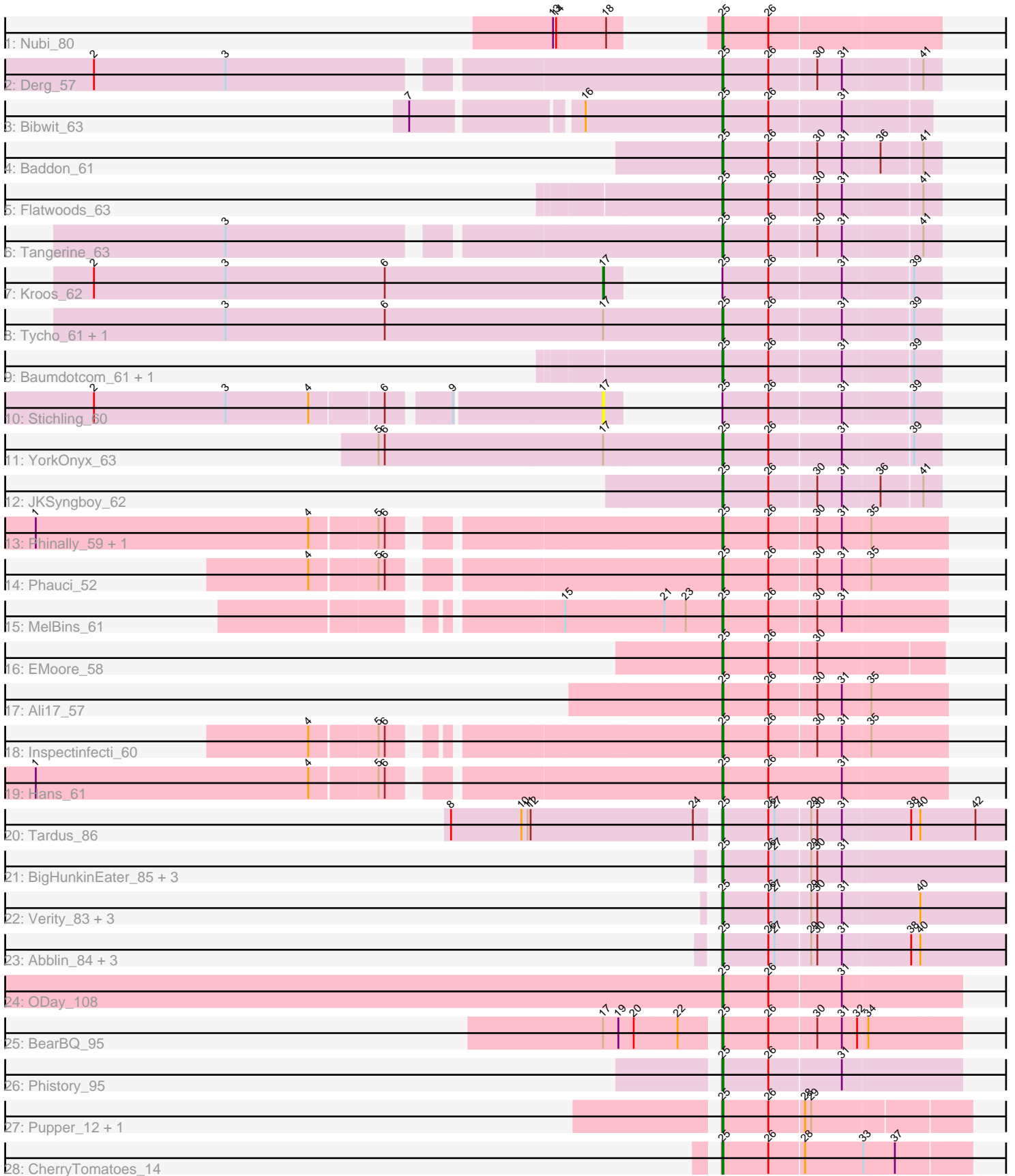


Pham 311774



Note: Tracks are now grouped by subcluster and scaled. Switching in subcluster is indicated by changes in track color. Track scale is now set by default to display the region 30 bp upstream of start 1 to 30 bp downstream of the last possible start. If this default region is judged to be packed too tightly with annotated starts, the track will be further scaled to only show that region of the ORF with annotated starts. This action will be indicated by adding "Zoomed" to the title. For starts, yellow indicates the location of called starts comprised solely of Glimmer/GeneMark auto-annotations, green indicates the location of called starts with at least 1 manual gene annotation.

Pham 311774 Report

This analysis was run 06/27/26 on database version 652.

Pham number 311774 has 41 members, 2 are drafts.

Phages represented in each track:

- Track 1 : Nubi_80
- Track 2 : Derg_57
- Track 3 : Bibwit_63
- Track 4 : Baddon_61
- Track 5 : Flatwoods_63
- Track 6 : Tangerine_63
- Track 7 : Kroos_62
- Track 8 : Tycho_61, Bizzy_63
- Track 9 : Baumdotcom_61, Kwobi_66
- Track 10 : Stichling_60
- Track 11 : YorkOnyx_63
- Track 12 : JKSyngboy_62
- Track 13 : Phinally_59, Leonard_59
- Track 14 : Phauci_52
- Track 15 : MelBins_61
- Track 16 : EMoore_58
- Track 17 : Ali17_57
- Track 18 : Inspectinfecti_60
- Track 19 : Hans_61
- Track 20 : Tardus_86
- Track 21 : BigHunkinEater_85, APunk_84, Pumpkiney_84, Zitch_86
- Track 22 : Verity_83, DoctorFroggo_84, Delrey21_84, Zipp_84
- Track 23 : Abblin_84, Natkenzie_84, Scioto_85, Sampson_86
- Track 24 : ODay_108
- Track 25 : BearBQ_95
- Track 26 : Phistory_95
- Track 27 : Pupper_12, SCentae_12
- Track 28 : CherryTomatoes_14

Summary of Final Annotations (See graph section above for start numbers):

The start number called the most often in the published annotations is 25, it was called in 38 of the 39 non-draft genes in the pham.

Genes that call this "Most Annotated" start:

- APunk_84, Abblin_84, Ali17_57, Baddon_61, Baumdotcom_61, BearBQ_95, Bibwit_63, BigHunkinEater_85, Bizzy_63, CherryTomatoes_14, Delrey21_84, Derg_57, DoctorFroggo_84, EMOore_58, Flatwoods_63, Hans_61, Inspectinfecti_60, JKSyngboy_62, Kwobi_66, Leonard_59, MelBins_61, Natkenzie_84, Nubi_80, ODay_108, Phauci_52, Phinally_59, Phistory_95, Pumpkiney_84, Pupper_12, SCentae_12, Sampson_86, Scioto_85, Tangerine_63, Tardus_86, Tycho_61, Verity_83, YorkOnyx_63, Zipp_84, Zitch_86,

Genes that have the "Most Annotated" start but do not call it:

- Kroos_62, Stichling_60,

Genes that do not have the "Most Annotated" start:

-

Summary by start number:

Start 17:

- Found in 6 of 41 (14.6%) of genes in pham
- Manual Annotations of this start: 1 of 39
- Called 33.3% of time when present
- Phage (with cluster) where this start called: Kroos_62 (DE1), Stichling_60 (DE1),

Start 25:

- Found in 41 of 41 (100.0%) of genes in pham
- Manual Annotations of this start: 38 of 39
- Called 95.1% of time when present
- Phage (with cluster) where this start called: APunk_84 (DE4), Abblin_84 (DE4), Ali17_57 (DE2), Baddon_61 (DE1), Baumdotcom_61 (DE1), BearBQ_95 (DN), Bibwit_63 (DE1), BigHunkinEater_85 (DE4), Bizzy_63 (DE1), CherryTomatoes_14 (DO), Delrey21_84 (DE4), Derg_57 (DE1), DoctorFroggo_84 (DE4), EMOore_58 (DE2), Flatwoods_63 (DE1), Hans_61 (DE2), Inspectinfecti_60 (DE2), JKSyngboy_62 (DE1), Kwobi_66 (DE1), Leonard_59 (DE2), MelBins_61 (DE2), Natkenzie_84 (DE4), Nubi_80 (DC1), ODay_108 (DN), Phauci_52 (DE2), Phinally_59 (DE2), Phistory_95 (DN1), Pumpkiney_84 (DE4), Pupper_12 (DO), SCentae_12 (DO), Sampson_86 (DE4), Scioto_85 (DE4), Tangerine_63 (DE1), Tardus_86 (DE4), Tycho_61 (DE1), Verity_83 (DE4), YorkOnyx_63 (DE1), Zipp_84 (DE4), Zitch_86 (DE4),

Summary by clusters:

There are 7 clusters represented in this pham: DN, DO, DE1, DE2, DE4, DN1, DC1,

Info for manual annotations of cluster DC1:

- Start number 25 was manually annotated 1 time for cluster DC1.

Info for manual annotations of cluster DE1:

- Start number 17 was manually annotated 1 time for cluster DE1.
- Start number 25 was manually annotated 11 times for cluster DE1.

Info for manual annotations of cluster DE2:

- Start number 25 was manually annotated 8 times for cluster DE2.

Info for manual annotations of cluster DE4:

- Start number 25 was manually annotated 12 times for cluster DE4.

Info for manual annotations of cluster DN:

- Start number 25 was manually annotated 2 times for cluster DN.

Info for manual annotations of cluster DN1:

- Start number 25 was manually annotated 1 time for cluster DN1.

Info for manual annotations of cluster DO:

- Start number 25 was manually annotated 3 times for cluster DO.

Gene Information:

Gene: APunk_84 Start: 57342, Stop: 57623, Start Num: 25

Candidate Starts for APunk_84:

(Start: 25 @57342 has 38 MA's), (26, 57387), (27, 57393), (29, 57426), (30, 57432), (31, 57456),

Gene: Abblin_84 Start: 57500, Stop: 57781, Start Num: 25

Candidate Starts for Abblin_84:

(Start: 25 @57500 has 38 MA's), (26, 57545), (27, 57551), (29, 57584), (30, 57590), (31, 57614), (38, 57677), (40, 57686),

Gene: Ali17_57 Start: 47018, Stop: 47233, Start Num: 25

Candidate Starts for Ali17_57:

(Start: 25 @47018 has 38 MA's), (26, 47063), (30, 47108), (31, 47132), (35, 47159),

Gene: Baddon_61 Start: 49615, Stop: 49821, Start Num: 25

Candidate Starts for Baddon_61:

(Start: 25 @49615 has 38 MA's), (26, 49660), (30, 49705), (31, 49729), (36, 49765), (41, 49804),

Gene: Baumdotcom_61 Start: 48916, Stop: 49122, Start Num: 25

Candidate Starts for Baumdotcom_61:

(Start: 25 @48916 has 38 MA's), (26, 48961), (31, 49030), (39, 49096),

Gene: BearBQ_95 Start: 52472, Stop: 52699, Start Num: 25

Candidate Starts for BearBQ_95:

(Start: 17 @52370 has 1 MA's), (19, 52385), (20, 52400), (22, 52442), (Start: 25 @52472 has 38 MA's), (26, 52517), (30, 52562), (31, 52586), (32, 52601), (34, 52610),

Gene: Bibwit_63 Start: 49471, Stop: 49668, Start Num: 25

Candidate Starts for Bibwit_63:

(7, 49285), (16, 49435), (Start: 25 @49471 has 38 MA's), (26, 49516), (31, 49585),

Gene: BigHunkinEater_85 Start: 56970, Stop: 57251, Start Num: 25

Candidate Starts for BigHunkinEater_85:

(Start: 25 @56970 has 38 MA's), (26, 57015), (27, 57021), (29, 57054), (30, 57060), (31, 57084),

Gene: Bizzy_63 Start: 48811, Stop: 49017, Start Num: 25

Candidate Starts for Bizzy_63:

(3, 48424), (6, 48580), (Start: 17 @48793 has 1 MA's), (Start: 25 @48811 has 38 MA's), (26, 48856), (31, 48925), (39, 48991),

Gene: CherryTomatoes_14 Start: 4328, Stop: 4564, Start Num: 25
Candidate Starts for CherryTomatoes_14:
(Start: 25 @4328 has 38 MA's), (26, 4373), (28, 4406), (33, 4463), (37, 4493),

Gene: Delrey21_84 Start: 58911, Stop: 59192, Start Num: 25
Candidate Starts for Delrey21_84:
(Start: 25 @58911 has 38 MA's), (26, 58956), (27, 58962), (29, 58995), (30, 59001), (31, 59025), (40, 59097),

Gene: Derg_57 Start: 47608, Stop: 47814, Start Num: 25
Candidate Starts for Derg_57:
(2, 47125), (3, 47254), (Start: 25 @47608 has 38 MA's), (26, 47653), (30, 47698), (31, 47722), (41, 47797),

Gene: DoctorFroggo_84 Start: 58911, Stop: 59192, Start Num: 25
Candidate Starts for DoctorFroggo_84:
(Start: 25 @58911 has 38 MA's), (26, 58956), (27, 58962), (29, 58995), (30, 59001), (31, 59025), (40, 59097),

Gene: EMoore_58 Start: 48525, Stop: 48734, Start Num: 25
Candidate Starts for EMoore_58:
(Start: 25 @48525 has 38 MA's), (26, 48570), (30, 48615),

Gene: Flatwoods_63 Start: 48489, Stop: 48695, Start Num: 25
Candidate Starts for Flatwoods_63:
(Start: 25 @48489 has 38 MA's), (26, 48534), (30, 48579), (31, 48603), (41, 48678),

Gene: Hans_61 Start: 47742, Stop: 47960, Start Num: 25
Candidate Starts for Hans_61:
(1, 47208), (4, 47475), (5, 47538), (6, 47544), (Start: 25 @47742 has 38 MA's), (26, 47787), (31, 47859),

Gene: Inspectinfecti_60 Start: 47867, Stop: 48082, Start Num: 25
Candidate Starts for Inspectinfecti_60:
(4, 47606), (5, 47669), (6, 47675), (Start: 25 @47867 has 38 MA's), (26, 47912), (30, 47957), (31, 47981), (35, 48008),

Gene: JKSyngboy_62 Start: 49841, Stop: 50047, Start Num: 25
Candidate Starts for JKSyngboy_62:
(Start: 25 @49841 has 38 MA's), (26, 49886), (30, 49931), (31, 49955), (36, 49991), (41, 50030),

Gene: Kroos_62 Start: 49360, Stop: 49584, Start Num: 17
Candidate Starts for Kroos_62:
(2, 48862), (3, 48991), (6, 49147), (Start: 17 @49360 has 1 MA's), (Start: 25 @49378 has 38 MA's), (26, 49423), (31, 49492), (39, 49558),

Gene: Kwobi_66 Start: 49987, Stop: 50193, Start Num: 25
Candidate Starts for Kwobi_66:
(Start: 25 @49987 has 38 MA's), (26, 50032), (31, 50101), (39, 50167),

Gene: Leonard_59 Start: 47944, Stop: 48159, Start Num: 25
Candidate Starts for Leonard_59:

(1, 47410), (4, 47677), (5, 47740), (6, 47746), (Start: 25 @47944 has 38 MA's), (26, 47989), (30, 48034), (31, 48058), (35, 48085),

Gene: MelBins_61 Start: 48205, Stop: 48420, Start Num: 25

Candidate Starts for MelBins_61:

(15, 48052), (21, 48148), (23, 48169), (Start: 25 @48205 has 38 MA's), (26, 48250), (30, 48295), (31, 48319),

Gene: Natkenzie_84 Start: 57500, Stop: 57781, Start Num: 25

Candidate Starts for Natkenzie_84:

(Start: 25 @57500 has 38 MA's), (26, 57545), (27, 57551), (29, 57584), (30, 57590), (31, 57614), (38, 57677), (40, 57686),

Gene: Nubi_80 Start: 52419, Stop: 52628, Start Num: 25

Candidate Starts for Nubi_80:

(13, 52338), (14, 52341), (18, 52389), (Start: 25 @52419 has 38 MA's), (26, 52464),

Gene: ODay_108 Start: 55478, Stop: 55705, Start Num: 25

Candidate Starts for ODay_108:

(Start: 25 @55478 has 38 MA's), (26, 55523), (31, 55592),

Gene: Phauci_52 Start: 44793, Stop: 45008, Start Num: 25

Candidate Starts for Phauci_52:

(4, 44526), (5, 44589), (6, 44595), (Start: 25 @44793 has 38 MA's), (26, 44838), (30, 44883), (31, 44907), (35, 44934),

Gene: Phinally_59 Start: 47941, Stop: 48156, Start Num: 25

Candidate Starts for Phinally_59:

(1, 47407), (4, 47674), (5, 47737), (6, 47743), (Start: 25 @47941 has 38 MA's), (26, 47986), (30, 48031), (31, 48055), (35, 48082),

Gene: Phistory_95 Start: 49991, Stop: 50218, Start Num: 25

Candidate Starts for Phistory_95:

(Start: 25 @49991 has 38 MA's), (26, 50036), (31, 50105),

Gene: Pumpkiney_84 Start: 56098, Stop: 56370, Start Num: 25

Candidate Starts for Pumpkiney_84:

(Start: 25 @56098 has 38 MA's), (26, 56143), (27, 56149), (29, 56182), (30, 56188), (31, 56212),

Gene: Pupper_12 Start: 4107, Stop: 4337, Start Num: 25

Candidate Starts for Pupper_12:

(Start: 25 @4107 has 38 MA's), (26, 4152), (28, 4185), (29, 4191),

Gene: SCentae_12 Start: 4106, Stop: 4336, Start Num: 25

Candidate Starts for SCentae_12:

(Start: 25 @4106 has 38 MA's), (26, 4151), (28, 4184), (29, 4190),

Gene: Sampson_86 Start: 57651, Stop: 57932, Start Num: 25

Candidate Starts for Sampson_86:

(Start: 25 @57651 has 38 MA's), (26, 57696), (27, 57702), (29, 57735), (30, 57741), (31, 57765), (38, 57828), (40, 57837),

Gene: Scioto_85 Start: 57501, Stop: 57782, Start Num: 25

Candidate Starts for Scioto_85:

(Start: 25 @57501 has 38 MA's), (26, 57546), (27, 57552), (29, 57585), (30, 57591), (31, 57615), (38, 57678), (40, 57687),

Gene: Stichling_60 Start: 48646, Stop: 48870, Start Num: 17

Candidate Starts for Stichling_60:

(2, 48172), (3, 48301), (4, 48382), (6, 48451), (9, 48505), (Start: 17 @48646 has 1 MA's), (Start: 25 @48664 has 38 MA's), (26, 48709), (31, 48778), (39, 48844),

Gene: Tangerine_63 Start: 48997, Stop: 49203, Start Num: 25

Candidate Starts for Tangerine_63:

(3, 48643), (Start: 25 @48997 has 38 MA's), (26, 49042), (30, 49087), (31, 49111), (41, 49186),

Gene: Tardus_86 Start: 57993, Stop: 58274, Start Num: 25

Candidate Starts for Tardus_86:

(8, 57741), (10, 57810), (11, 57816), (12, 57819), (24, 57978), (Start: 25 @57993 has 38 MA's), (26, 58038), (27, 58044), (29, 58077), (30, 58083), (31, 58107), (38, 58170), (40, 58179), (42, 58233),

Gene: Tycho_61 Start: 48800, Stop: 49006, Start Num: 25

Candidate Starts for Tycho_61:

(3, 48413), (6, 48569), (Start: 17 @48782 has 1 MA's), (Start: 25 @48800 has 38 MA's), (26, 48845), (31, 48914), (39, 48980),

Gene: Verity_83 Start: 58773, Stop: 59054, Start Num: 25

Candidate Starts for Verity_83:

(Start: 25 @58773 has 38 MA's), (26, 58818), (27, 58824), (29, 58857), (30, 58863), (31, 58887), (40, 58959),

Gene: YorkOnyx_63 Start: 48830, Stop: 49036, Start Num: 25

Candidate Starts for YorkOnyx_63:

(5, 48593), (6, 48599), (Start: 17 @48812 has 1 MA's), (Start: 25 @48830 has 38 MA's), (26, 48875), (31, 48944), (39, 49010),

Gene: Zipp_84 Start: 58654, Stop: 58935, Start Num: 25

Candidate Starts for Zipp_84:

(Start: 25 @58654 has 38 MA's), (26, 58699), (27, 58705), (29, 58738), (30, 58744), (31, 58768), (40, 58840),

Gene: Zitch_86 Start: 56966, Stop: 57247, Start Num: 25

Candidate Starts for Zitch_86:

(Start: 25 @56966 has 38 MA's), (26, 57011), (27, 57017), (29, 57050), (30, 57056), (31, 57080),