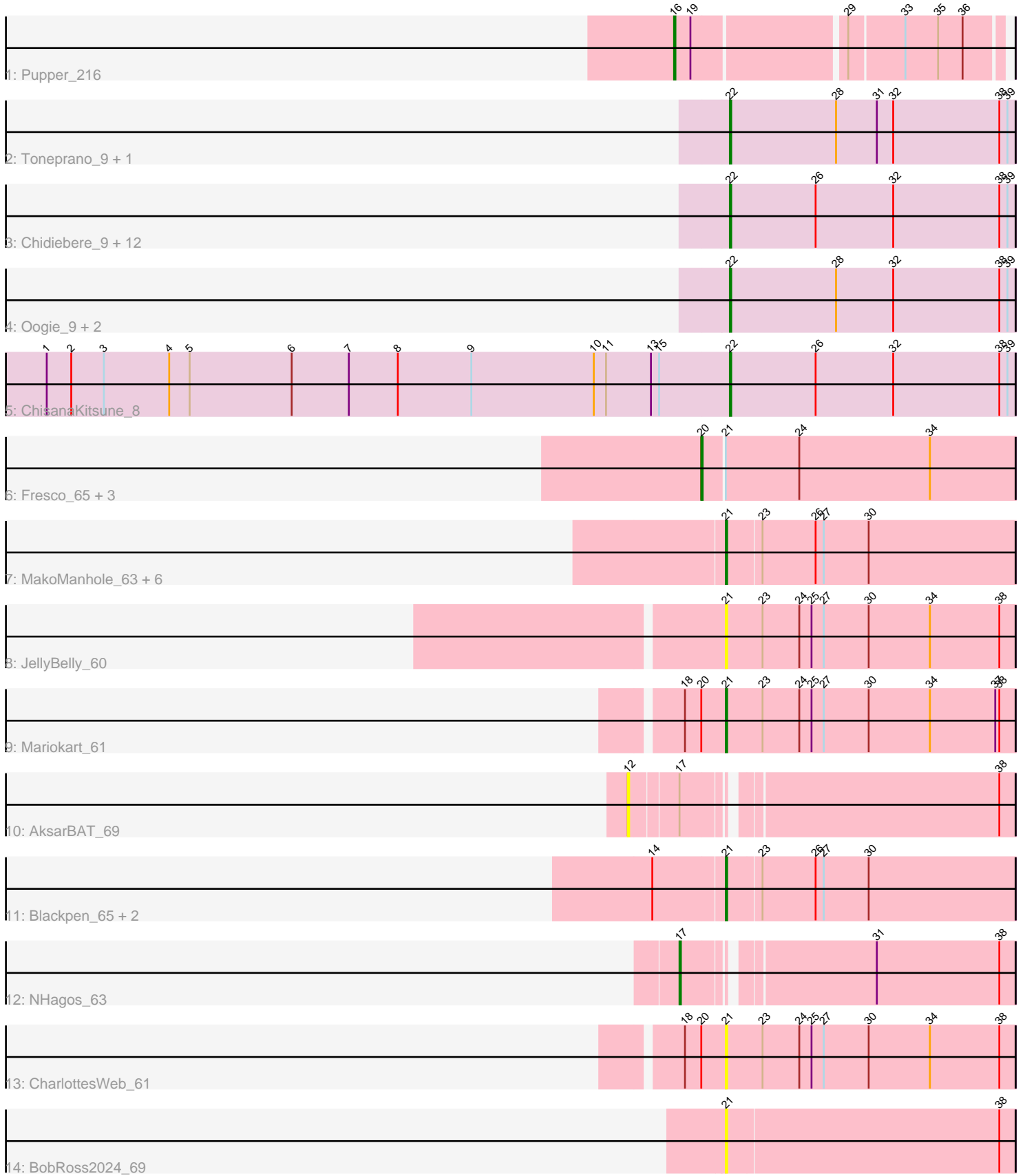


Pham 311791



Note: Tracks are now grouped by subcluster and scaled. Switching in subcluster is indicated by changes in track color. Track scale is now set by default to display the region 30 bp upstream of start 1 to 30 bp downstream of the last possible start. If this default region is judged to be packed too tightly with annotated starts, the track will be further scaled to only show that region of the ORF with annotated starts. This action will be indicated by adding "Zoomed" to the title. For starts, yellow indicates the location of called starts comprised solely of Glimmer/GeneMark auto-annotations, green indicates the location of called starts with at least 1 manual gene annotation.

Pham 311791 Report

This analysis was run 06/27/26 on database version 652.

Pham number 311791 has 40 members, 17 are drafts.

Phages represented in each track:

- Track 1 : Pupper_216
- Track 2 : Toneprano_9, Gray_9
- Track 3 : Chidiebere_9, Aloki_9, Twin_9, MintFritos_9, EmoNemo_9, Pakusa_9, Argena_9, Mikronejon_9, Kabocha_9, Hanem_9, Farrylious_9, Amoonguss_9, Schomber_9
- Track 4 : Oogie_9, Lenoshki_9, Beted_9
- Track 5 : ChisanaKitsune_8
- Track 6 : Fresco_65, Axumite_65, Shatter_65, Ligma_65
- Track 7 : MakoManhole_63, TraderJ_66, Yeshua_66, AnarQue_68, Wooper_67, FelixTres_67, MossRose_66
- Track 8 : JellyBelly_60
- Track 9 : Mariokart_61
- Track 10 : AksarBAT_69
- Track 11 : Blackpen_65, CloverMinnie_65, CaiB_66
- Track 12 : NHagos_63
- Track 13 : CharlottesWeb_61
- Track 14 : BobRoss2024_69

Summary of Final Annotations (See graph section above for start numbers):

The start number called the most often in the published annotations is 21, it was called in 9 of the 23 non-draft genes in the pham.

Genes that call this "Most Annotated" start:

- AnarQue_68, Blackpen_65, BobRoss2024_69, CaiB_66, CharlottesWeb_61, CloverMinnie_65, FelixTres_67, JellyBelly_60, MakoManhole_63, Mariokart_61, MossRose_66, TraderJ_66, Wooper_67, Yeshua_66,

Genes that have the "Most Annotated" start but do not call it:

- Axumite_65, Fresco_65, Ligma_65, Shatter_65,

Genes that do not have the "Most Annotated" start:

- AksarBAT_69, Aloki_9, Amoonguss_9, Argena_9, Beted_9, Chidiebere_9, ChisanaKitsune_8, EmoNemo_9, Farrylious_9, Gray_9, Hanem_9, Kabocha_9,

Lenoshki_9, Mikronejon_9, MintFritos_9, NHagos_63, Oogie_9, Pakusa_9, Pupper_216, Schomber_9, Toneprano_9, Twin_9,

Summary by start number:

Start 12:

- Found in 1 of 40 (2.5%) of genes in pham
- No Manual Annotations of this start.
- Called 100.0% of time when present
- Phage (with cluster) where this start called: AksarBAT_69 (DR),

Start 16:

- Found in 1 of 40 (2.5%) of genes in pham
- Manual Annotations of this start: 1 of 23
- Called 100.0% of time when present
- Phage (with cluster) where this start called: Pupper_216 (DO),

Start 17:

- Found in 2 of 40 (5.0%) of genes in pham
- Manual Annotations of this start: 1 of 23
- Called 50.0% of time when present
- Phage (with cluster) where this start called: NHagos_63 (DR),

Start 20:

- Found in 6 of 40 (15.0%) of genes in pham
- Manual Annotations of this start: 4 of 23
- Called 66.7% of time when present
- Phage (with cluster) where this start called: Axumite_65 (DR), Fresco_65 (DR), Ligma_65 (DR), Shatter_65 (DR),

Start 21:

- Found in 18 of 40 (45.0%) of genes in pham
- Manual Annotations of this start: 9 of 23
- Called 77.8% of time when present
- Phage (with cluster) where this start called: AnarQue_68 (DR), Blackpen_65 (DR), BobRoss2024_69 (DR), CaiB_66 (DR), CharlottesWeb_61 (DR), CloverMinnie_65 (DR), FelixTres_67 (DR), JellyBelly_60 (DR), MakoManhole_63 (DR), Mariokart_61 (DR), MossRose_66 (DR), TraderJ_66 (DR), Wooper_67 (DR), Yeshua_66 (DR),

Start 22:

- Found in 19 of 40 (47.5%) of genes in pham
- Manual Annotations of this start: 8 of 23
- Called 100.0% of time when present
- Phage (with cluster) where this start called: Alok_9 (DQ), Amoonguss_9 (DQ), Argena_9 (DQ), Beted_9 (DQ), Chidiebere_9 (DQ), ChisanaKitsune_8 (DQ), EmoNemo_9 (DQ), Farrylous_9 (DQ), Gray_9 (DQ), Hanem_9 (DQ), Kabocha_9 (DQ), Lenoshki_9 (DQ), Mikronejon_9 (DQ), MintFritos_9 (DQ), Oogie_9 (DQ), Pakusa_9 (DQ), Schomber_9 (DQ), Toneprano_9 (DQ), Twin_9 (DQ),

Summary by clusters:

There are 3 clusters represented in this pham: DO, DR, DQ,

Info for manual annotations of cluster DO:

- Start number 16 was manually annotated 1 time for cluster DO.

Info for manual annotations of cluster DQ:

- Start number 22 was manually annotated 8 times for cluster DQ.

Info for manual annotations of cluster DR:

- Start number 17 was manually annotated 1 time for cluster DR.
- Start number 20 was manually annotated 4 times for cluster DR.
- Start number 21 was manually annotated 9 times for cluster DR.

Gene Information:

Gene: AksarBAT_69 Start: 53592, Stop: 53849, Start Num: 12

Candidate Starts for AksarBAT_69:

(12, 53592), (Start: 17 @53625 has 1 MA's), (38, 53838),

Gene: Alok_i_9 Start: 4234, Stop: 4443, Start Num: 22

Candidate Starts for Alok_i_9:

(Start: 22 @4234 has 8 MA's), (26, 4297), (32, 4354), (38, 4432), (39, 4438),

Gene: Amoonguss_9 Start: 4234, Stop: 4443, Start Num: 22

Candidate Starts for Amoonguss_9:

(Start: 22 @4234 has 8 MA's), (26, 4297), (32, 4354), (38, 4432), (39, 4438),

Gene: AnarQue_68 Start: 53771, Stop: 53980, Start Num: 21

Candidate Starts for AnarQue_68:

(Start: 21 @53771 has 9 MA's), (23, 53795), (26, 53834), (27, 53840), (30, 53873),

Gene: Argena_9 Start: 4234, Stop: 4443, Start Num: 22

Candidate Starts for Argena_9:

(Start: 22 @4234 has 8 MA's), (26, 4297), (32, 4354), (38, 4432), (39, 4438),

Gene: Axumite_65 Start: 51916, Stop: 52143, Start Num: 20

Candidate Starts for Axumite_65:

(Start: 20 @51916 has 4 MA's), (Start: 21 @51931 has 9 MA's), (24, 51985), (34, 52081),

Gene: Beted_9 Start: 3975, Stop: 4184, Start Num: 22

Candidate Starts for Beted_9:

(Start: 22 @3975 has 8 MA's), (28, 4053), (32, 4095), (38, 4173), (39, 4179),

Gene: Blackpen_65 Start: 52225, Stop: 52434, Start Num: 21

Candidate Starts for Blackpen_65:

(14, 52177), (Start: 21 @52225 has 9 MA's), (23, 52249), (26, 52288), (27, 52294), (30, 52327),

Gene: BobRoss2024_69 Start: 53399, Stop: 53608, Start Num: 21

Candidate Starts for BobRoss2024_69:

(Start: 21 @53399 has 9 MA's), (38, 53597),

Gene: CaiB_66 Start: 53570, Stop: 53779, Start Num: 21

Candidate Starts for CaiB_66:

(14, 53522), (Start: 21 @53570 has 9 MA's), (23, 53594), (26, 53633), (27, 53639), (30, 53672),

Gene: CharlottesWeb_61 Start: 50542, Stop: 50754, Start Num: 21

Candidate Starts for CharlottesWeb_61:

(18, 50512), (Start: 20 @50524 has 4 MA's), (Start: 21 @50542 has 9 MA's), (23, 50569), (24, 50596), (25, 50605), (27, 50614), (30, 50647), (34, 50692), (38, 50743),

Gene: Chidiebere_9 Start: 4234, Stop: 4443, Start Num: 22

Candidate Starts for Chidiebere_9:

(Start: 22 @4234 has 8 MA's), (26, 4297), (32, 4354), (38, 4432), (39, 4438),

Gene: ChisanaKitsune_8 Start: 3820, Stop: 4029, Start Num: 22

Candidate Starts for ChisanaKitsune_8:

(1, 3319), (2, 3337), (3, 3361), (4, 3409), (5, 3424), (6, 3499), (7, 3541), (8, 3577), (9, 3631), (10, 3721), (11, 3730), (13, 3763), (15, 3769), (Start: 22 @3820 has 8 MA's), (26, 3883), (32, 3940), (38, 4018), (39, 4024),

Gene: CloverMinnie_65 Start: 52733, Stop: 52942, Start Num: 21

Candidate Starts for CloverMinnie_65:

(14, 52685), (Start: 21 @52733 has 9 MA's), (23, 52757), (26, 52796), (27, 52802), (30, 52835),

Gene: EmoNemo_9 Start: 4234, Stop: 4443, Start Num: 22

Candidate Starts for EmoNemo_9:

(Start: 22 @4234 has 8 MA's), (26, 4297), (32, 4354), (38, 4432), (39, 4438),

Gene: Farrylious_9 Start: 4258, Stop: 4467, Start Num: 22

Candidate Starts for Farrylious_9:

(Start: 22 @4258 has 8 MA's), (26, 4321), (32, 4378), (38, 4456), (39, 4462),

Gene: FelixTres_67 Start: 53025, Stop: 53234, Start Num: 21

Candidate Starts for FelixTres_67:

(Start: 21 @53025 has 9 MA's), (23, 53049), (26, 53088), (27, 53094), (30, 53127),

Gene: Fresco_65 Start: 51922, Stop: 52149, Start Num: 20

Candidate Starts for Fresco_65:

(Start: 20 @51922 has 4 MA's), (Start: 21 @51937 has 9 MA's), (24, 51991), (34, 52087),

Gene: Gray_9 Start: 4234, Stop: 4443, Start Num: 22

Candidate Starts for Gray_9:

(Start: 22 @4234 has 8 MA's), (28, 4312), (31, 4342), (32, 4354), (38, 4432), (39, 4438),

Gene: Hanem_9 Start: 4234, Stop: 4443, Start Num: 22

Candidate Starts for Hanem_9:

(Start: 22 @4234 has 8 MA's), (26, 4297), (32, 4354), (38, 4432), (39, 4438),

Gene: JellyBelly_60 Start: 50538, Stop: 50750, Start Num: 21

Candidate Starts for JellyBelly_60:

(Start: 21 @50538 has 9 MA's), (23, 50565), (24, 50592), (25, 50601), (27, 50610), (30, 50643), (34, 50688), (38, 50739),

Gene: Kabocha_9 Start: 4234, Stop: 4443, Start Num: 22

Candidate Starts for Kabocha_9:

(Start: 22 @4234 has 8 MA's), (26, 4297), (32, 4354), (38, 4432), (39, 4438),

Gene: Lenoshki_9 Start: 3975, Stop: 4184, Start Num: 22
Candidate Starts for Lenoshki_9:
(Start: 22 @3975 has 8 MA's), (28, 4053), (32, 4095), (38, 4173), (39, 4179),

Gene: Ligma_65 Start: 51916, Stop: 52143, Start Num: 20
Candidate Starts for Ligma_65:
(Start: 20 @51916 has 4 MA's), (Start: 21 @51931 has 9 MA's), (24, 51985), (34, 52081),

Gene: MakoManhole_63 Start: 52073, Stop: 52282, Start Num: 21
Candidate Starts for MakoManhole_63:
(Start: 21 @52073 has 9 MA's), (23, 52097), (26, 52136), (27, 52142), (30, 52175),

Gene: Mariokart_61 Start: 50827, Stop: 51039, Start Num: 21
Candidate Starts for Mariokart_61:
(18, 50797), (Start: 20 @50809 has 4 MA's), (Start: 21 @50827 has 9 MA's), (23, 50854), (24, 50881),
(25, 50890), (27, 50899), (30, 50932), (34, 50977), (37, 51025), (38, 51028),

Gene: Mikronejon_9 Start: 4234, Stop: 4443, Start Num: 22
Candidate Starts for Mikronejon_9:
(Start: 22 @4234 has 8 MA's), (26, 4297), (32, 4354), (38, 4432), (39, 4438),

Gene: MintFritos_9 Start: 4234, Stop: 4443, Start Num: 22
Candidate Starts for MintFritos_9:
(Start: 22 @4234 has 8 MA's), (26, 4297), (32, 4354), (38, 4432), (39, 4438),

Gene: MossRose_66 Start: 53033, Stop: 53242, Start Num: 21
Candidate Starts for MossRose_66:
(Start: 21 @53033 has 9 MA's), (23, 53057), (26, 53096), (27, 53102), (30, 53135),

Gene: NHagos_63 Start: 51517, Stop: 51741, Start Num: 17
Candidate Starts for NHagos_63:
(Start: 17 @51517 has 1 MA's), (31, 51640), (38, 51730),

Gene: Oogie_9 Start: 3975, Stop: 4184, Start Num: 22
Candidate Starts for Oogie_9:
(Start: 22 @3975 has 8 MA's), (28, 4053), (32, 4095), (38, 4173), (39, 4179),

Gene: Pakusa_9 Start: 3976, Stop: 4185, Start Num: 22
Candidate Starts for Pakusa_9:
(Start: 22 @3976 has 8 MA's), (26, 4039), (32, 4096), (38, 4174), (39, 4180),

Gene: Pupper_216 Start: 144564, Stop: 144788, Start Num: 16
Candidate Starts for Pupper_216:
(Start: 16 @144564 has 1 MA's), (19, 144576), (29, 144681), (33, 144720), (35, 144744), (36, 144762),

Gene: Schomber_9 Start: 4234, Stop: 4443, Start Num: 22
Candidate Starts for Schomber_9:
(Start: 22 @4234 has 8 MA's), (26, 4297), (32, 4354), (38, 4432), (39, 4438),

Gene: Shatter_65 Start: 51916, Stop: 52143, Start Num: 20
Candidate Starts for Shatter_65:
(Start: 20 @51916 has 4 MA's), (Start: 21 @51931 has 9 MA's), (24, 51985), (34, 52081),

Gene: Toneprano_9 Start: 4234, Stop: 4443, Start Num: 22

Candidate Starts for Toneprano_9:

(Start: 22 @4234 has 8 MA's), (28, 4312), (31, 4342), (32, 4354), (38, 4432), (39, 4438),

Gene: TraderJ_66 Start: 53159, Stop: 53368, Start Num: 21

Candidate Starts for TraderJ_66:

(Start: 21 @53159 has 9 MA's), (23, 53183), (26, 53222), (27, 53228), (30, 53261),

Gene: Twin_9 Start: 4234, Stop: 4443, Start Num: 22

Candidate Starts for Twin_9:

(Start: 22 @4234 has 8 MA's), (26, 4297), (32, 4354), (38, 4432), (39, 4438),

Gene: Wooper_67 Start: 53104, Stop: 53313, Start Num: 21

Candidate Starts for Wooper_67:

(Start: 21 @53104 has 9 MA's), (23, 53128), (26, 53167), (27, 53173), (30, 53206),

Gene: Yeshua_66 Start: 53081, Stop: 53290, Start Num: 21

Candidate Starts for Yeshua_66:

(Start: 21 @53081 has 9 MA's), (23, 53105), (26, 53144), (27, 53150), (30, 53183),