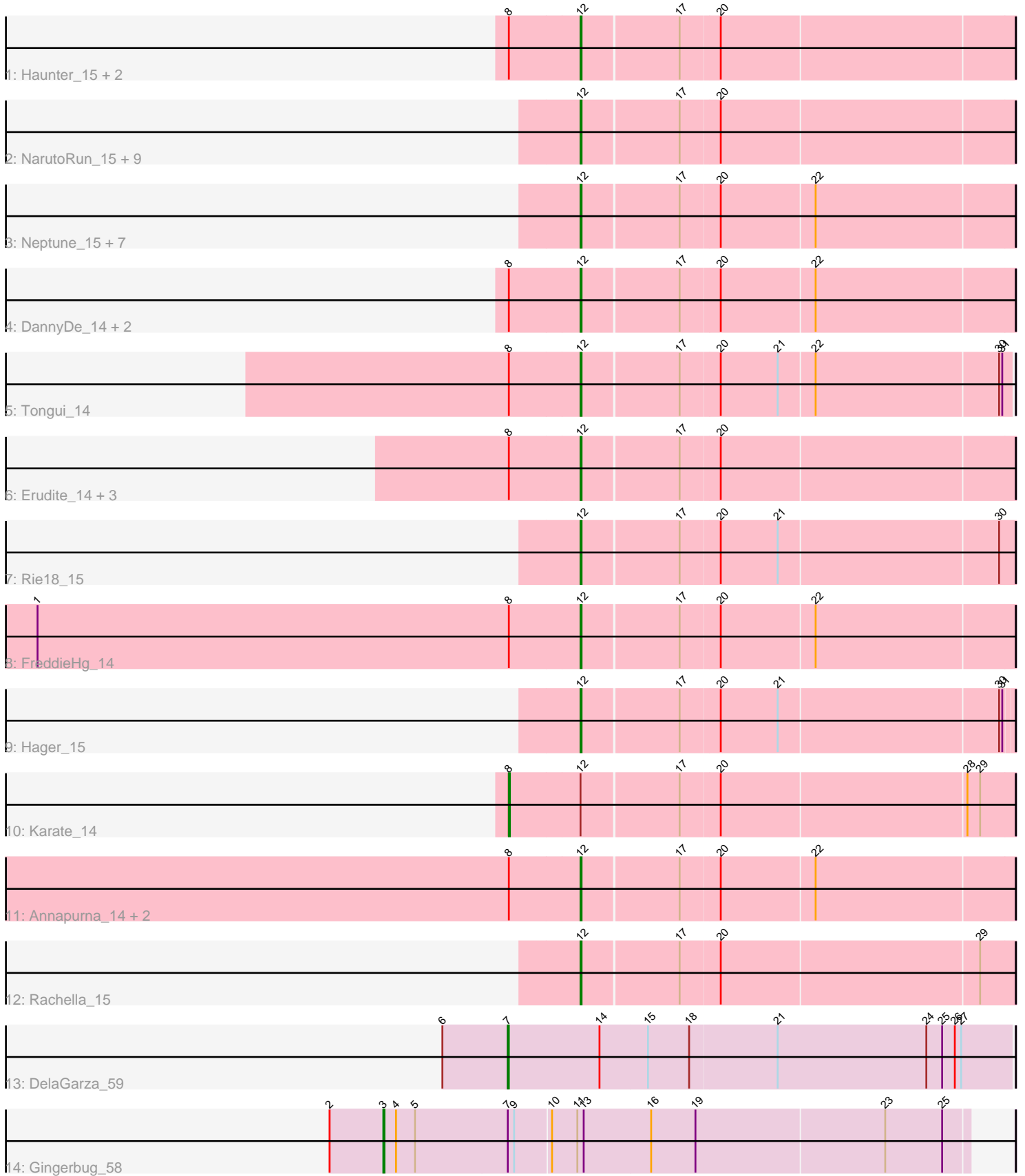


Pham 311795



Note: Tracks are now grouped by subcluster and scaled. Switching in subcluster is indicated by changes in track color. Track scale is now set by default to display the region 30 bp upstream of start 1 to 30 bp downstream of the last possible start. If this default region is judged to be packed too tightly with annotated starts, the track will be further scaled to only show that region of the ORF with annotated starts. This action will be indicated by adding "Zoomed" to the title. For starts, yellow indicates the location of called starts comprised solely of Glimmer/GeneMark auto-annotations, green indicates the location of called starts with at least 1 manual gene annotation.

Pham 311795 Report

This analysis was run 06/27/26 on database version 652.

Pham number 311795 has 39 members, 3 are drafts.

Phages represented in each track:

- Track 1 : Haunter_15, Tedro_15, Crestdrop_14
- Track 2 : NarutoRun_15, PhunaPhoke_15, Gilda_15, CoolCookie_15, Krampus_15, OhDear_15, Anakin_15, Potty_15, Tiggy93_15, Poultruss_14
- Track 3 : Neptune_15, JingleBells_14, Kate_15, AnnaSerena_15, Artiphact_15, Pharpay_15, Cybele_15, OverHedge_15
- Track 4 : DannyDe_14, Snakehole_16, SilentWarrior_14
- Track 5 : Tongui_14
- Track 6 : Erudite_14, JDawG_14, Dauntless_14, Aesir_14
- Track 7 : Rie18_15
- Track 8 : FreddieHg_14
- Track 9 : Hager_15
- Track 10 : Karate_14
- Track 11 : Annapurna_14, Hiddenleaf_14, Chivey_14
- Track 12 : Rachella_15
- Track 13 : DelaGarza_59
- Track 14 : Gingerbug_58

Summary of Final Annotations (See graph section above for start numbers):

The start number called the most often in the published annotations is 12, it was called in 33 of the 36 non-draft genes in the pham.

Genes that call this "Most Annotated" start:

- Aesir_14, Anakin_15, AnnaSerena_15, Annapurna_14, Artiphact_15, Chivey_14, CoolCookie_15, Crestdrop_14, Cybele_15, DannyDe_14, Dauntless_14, Erudite_14, FreddieHg_14, Gilda_15, Hager_15, Haunter_15, Hiddenleaf_14, JDawG_14, JingleBells_14, Kate_15, Krampus_15, NarutoRun_15, Neptune_15, OhDear_15, OverHedge_15, Pharpay_15, PhunaPhoke_15, Potty_15, Poultruss_14, Rachella_15, Rie18_15, SilentWarrior_14, Snakehole_16, Tedro_15, Tiggy93_15, Tongui_14,

Genes that have the "Most Annotated" start but do not call it:

- Karate_14,

Genes that do not have the "Most Annotated" start:

- DelaGarza_59, Gingerbug_58,

Summary by start number:

Start 3:

- Found in 1 of 39 (2.6%) of genes in pham
- Manual Annotations of this start: 1 of 36
- Called 100.0% of time when present
- Phage (with cluster) where this start called: Gingerbug_58 (GF),

Start 7:

- Found in 2 of 39 (5.1%) of genes in pham
- Manual Annotations of this start: 1 of 36
- Called 50.0% of time when present
- Phage (with cluster) where this start called: DelaGarza_59 (GF),

Start 8:

- Found in 16 of 39 (41.0%) of genes in pham
- Manual Annotations of this start: 1 of 36
- Called 6.2% of time when present
- Phage (with cluster) where this start called: Karate_14 (EF),

Start 12:

- Found in 37 of 39 (94.9%) of genes in pham
- Manual Annotations of this start: 33 of 36
- Called 97.3% of time when present
- Phage (with cluster) where this start called: Aesir_14 (EF), Anakin_15 (EF), AnnaSerena_15 (EF), Annapurna_14 (EF), Artiphact_15 (EF), Chivey_14 (EF), CoolCookie_15 (EF), Crestdrop_14 (EF), Cybele_15 (EF), DannyDe_14 (EF), Dauntless_14 (EF), Erudite_14 (EF), FreddieHg_14 (EF), Gilda_15 (EF), Hager_15 (EF), Haunter_15 (EF), Hiddenleaf_14 (EF), JDawG_14 (EF), JingleBells_14 (EF), Kate_15 (EF), Krampus_15 (EF), NarutoRun_15 (EF), Neptune_15 (EF), OhDear_15 (EF), OverHedge_15 (EF), Pharpay_15 (EF), PhunaPhoke_15 (EF), Potty_15 (EF), Poultruss_14 (EF), Rachella_15 (EF), Rie18_15 (EF), SilentWarrior_14 (EF), Snakehole_16 (EF), Tedro_15 (EF), Tiggy93_15 (EF), Tongui_14 (EF),

Summary by clusters:

There are 2 clusters represented in this pham: GF, EF,

Info for manual annotations of cluster EF:

- Start number 8 was manually annotated 1 time for cluster EF.
- Start number 12 was manually annotated 33 times for cluster EF.

Info for manual annotations of cluster GF:

- Start number 3 was manually annotated 1 time for cluster GF.
- Start number 7 was manually annotated 1 time for cluster GF.

Gene Information:

Gene: Aesir_14 Start: 7738, Stop: 8136, Start Num: 12

Candidate Starts for Aesir_14:

(Start: 8 @7672 has 1 MA's), (Start: 12 @7738 has 33 MA's), (17, 7828), (20, 7864),

Gene: Anakin_15 Start: 7953, Stop: 8351, Start Num: 12

Candidate Starts for Anakin_15:

(Start: 12 @7953 has 33 MA's), (17, 8043), (20, 8079),

Gene: AnnaSerena_15 Start: 7950, Stop: 8348, Start Num: 12

Candidate Starts for AnnaSerena_15:

(Start: 12 @7950 has 33 MA's), (17, 8040), (20, 8076), (22, 8163),

Gene: Annapurna_14 Start: 7151, Stop: 7549, Start Num: 12

Candidate Starts for Annapurna_14:

(Start: 8 @7085 has 1 MA's), (Start: 12 @7151 has 33 MA's), (17, 7241), (20, 7277), (22, 7364),

Gene: Artiphact_15 Start: 7942, Stop: 8340, Start Num: 12

Candidate Starts for Artiphact_15:

(Start: 12 @7942 has 33 MA's), (17, 8032), (20, 8068), (22, 8155),

Gene: Chivey_14 Start: 7144, Stop: 7542, Start Num: 12

Candidate Starts for Chivey_14:

(Start: 8 @7078 has 1 MA's), (Start: 12 @7144 has 33 MA's), (17, 7234), (20, 7270), (22, 7357),

Gene: CoolCookie_15 Start: 7945, Stop: 8343, Start Num: 12

Candidate Starts for CoolCookie_15:

(Start: 12 @7945 has 33 MA's), (17, 8035), (20, 8071),

Gene: Crestdrop_14 Start: 7018, Stop: 7416, Start Num: 12

Candidate Starts for Crestdrop_14:

(Start: 8 @6952 has 1 MA's), (Start: 12 @7018 has 33 MA's), (17, 7108), (20, 7144),

Gene: Cybele_15 Start: 7918, Stop: 8316, Start Num: 12

Candidate Starts for Cybele_15:

(Start: 12 @7918 has 33 MA's), (17, 8008), (20, 8044), (22, 8131),

Gene: DannyDe_14 Start: 7136, Stop: 7534, Start Num: 12

Candidate Starts for DannyDe_14:

(Start: 8 @7070 has 1 MA's), (Start: 12 @7136 has 33 MA's), (17, 7226), (20, 7262), (22, 7349),

Gene: Dauntless_14 Start: 7667, Stop: 8065, Start Num: 12

Candidate Starts for Dauntless_14:

(Start: 8 @7601 has 1 MA's), (Start: 12 @7667 has 33 MA's), (17, 7757), (20, 7793),

Gene: DelaGarza_59 Start: 33764, Stop: 34237, Start Num: 7

Candidate Starts for DelaGarza_59:

(6, 33704), (Start: 7 @33764 has 1 MA's), (14, 33851), (15, 33896), (18, 33935), (21, 34016), (24, 34157), (25, 34172), (26, 34184), (27, 34190),

Gene: Erudite_14 Start: 7667, Stop: 8065, Start Num: 12

Candidate Starts for Erudite_14:

(Start: 8 @7601 has 1 MA's), (Start: 12 @7667 has 33 MA's), (17, 7757), (20, 7793),

Gene: FreddieHg_14 Start: 7157, Stop: 7555, Start Num: 12

Candidate Starts for FreddieHg_14:

(1, 6644), (Start: 8 @7091 has 1 MA's), (Start: 12 @7157 has 33 MA's), (17, 7247), (20, 7283), (22, 7370),

Gene: Gilda_15 Start: 7942, Stop: 8340, Start Num: 12

Candidate Starts for Gilda_15:

(Start: 12 @7942 has 33 MA's), (17, 8032), (20, 8068),

Gene: Gingerbug_58 Start: 34196, Stop: 34741, Start Num: 3

Candidate Starts for Gingerbug_58:

(2, 34145), (Start: 3 @34196 has 1 MA's), (4, 34208), (5, 34226), (Start: 7 @34313 has 1 MA's), (9, 34319), (10, 34352), (11, 34376), (13, 34382), (16, 34445), (19, 34487), (23, 34664), (25, 34718),

Gene: Hager_15 Start: 7407, Stop: 7802, Start Num: 12

Candidate Starts for Hager_15:

(Start: 12 @7407 has 33 MA's), (17, 7497), (20, 7533), (21, 7587), (30, 7791), (31, 7794),

Gene: Haunter_15 Start: 7361, Stop: 7759, Start Num: 12

Candidate Starts for Haunter_15:

(Start: 8 @7295 has 1 MA's), (Start: 12 @7361 has 33 MA's), (17, 7451), (20, 7487),

Gene: Hiddenleaf_14 Start: 7144, Stop: 7542, Start Num: 12

Candidate Starts for Hiddenleaf_14:

(Start: 8 @7078 has 1 MA's), (Start: 12 @7144 has 33 MA's), (17, 7234), (20, 7270), (22, 7357),

Gene: JDawG_14 Start: 7732, Stop: 8130, Start Num: 12

Candidate Starts for JDawG_14:

(Start: 8 @7666 has 1 MA's), (Start: 12 @7732 has 33 MA's), (17, 7822), (20, 7858),

Gene: JingleBells_14 Start: 7215, Stop: 7613, Start Num: 12

Candidate Starts for JingleBells_14:

(Start: 12 @7215 has 33 MA's), (17, 7305), (20, 7341), (22, 7428),

Gene: Karate_14 Start: 7300, Stop: 7764, Start Num: 8

Candidate Starts for Karate_14:

(Start: 8 @7300 has 1 MA's), (Start: 12 @7366 has 33 MA's), (17, 7456), (20, 7492), (28, 7720), (29, 7732),

Gene: Kate_15 Start: 7950, Stop: 8348, Start Num: 12

Candidate Starts for Kate_15:

(Start: 12 @7950 has 33 MA's), (17, 8040), (20, 8076), (22, 8163),

Gene: Krampus_15 Start: 7948, Stop: 8346, Start Num: 12

Candidate Starts for Krampus_15:

(Start: 12 @7948 has 33 MA's), (17, 8038), (20, 8074),

Gene: NarutoRun_15 Start: 7953, Stop: 8351, Start Num: 12

Candidate Starts for NarutoRun_15:

(Start: 12 @7953 has 33 MA's), (17, 8043), (20, 8079),

Gene: Neptune_15 Start: 7918, Stop: 8316, Start Num: 12

Candidate Starts for Neptune_15:

(Start: 12 @7918 has 33 MA's), (17, 8008), (20, 8044), (22, 8131),

Gene: OhDear_15 Start: 7947, Stop: 8345, Start Num: 12

Candidate Starts for OhDear_15:

(Start: 12 @7947 has 33 MA's), (17, 8037), (20, 8073),

Gene: OverHedge_15 Start: 7915, Stop: 8313, Start Num: 12

Candidate Starts for OverHedge_15:

(Start: 12 @7915 has 33 MA's), (17, 8005), (20, 8041), (22, 8128),

Gene: Pharpay_15 Start: 7963, Stop: 8361, Start Num: 12

Candidate Starts for Pharpay_15:

(Start: 12 @7963 has 33 MA's), (17, 8053), (20, 8089), (22, 8176),

Gene: PhunaPhoke_15 Start: 7936, Stop: 8334, Start Num: 12

Candidate Starts for PhunaPhoke_15:

(Start: 12 @7936 has 33 MA's), (17, 8026), (20, 8062),

Gene: Potty_15 Start: 7941, Stop: 8339, Start Num: 12

Candidate Starts for Potty_15:

(Start: 12 @7941 has 33 MA's), (17, 8031), (20, 8067),

Gene: Poultruss_14 Start: 7715, Stop: 8113, Start Num: 12

Candidate Starts for Poultruss_14:

(Start: 12 @7715 has 33 MA's), (17, 7805), (20, 7841),

Gene: Rachella_15 Start: 7947, Stop: 8345, Start Num: 12

Candidate Starts for Rachella_15:

(Start: 12 @7947 has 33 MA's), (17, 8037), (20, 8073), (29, 8313),

Gene: Rie18_15 Start: 7301, Stop: 7699, Start Num: 12

Candidate Starts for Rie18_15:

(Start: 12 @7301 has 33 MA's), (17, 7391), (20, 7427), (21, 7481), (30, 7685),

Gene: SilentWarrior_14 Start: 7152, Stop: 7550, Start Num: 12

Candidate Starts for SilentWarrior_14:

(Start: 8 @7086 has 1 MA's), (Start: 12 @7152 has 33 MA's), (17, 7242), (20, 7278), (22, 7365),

Gene: Snakehole_16 Start: 7240, Stop: 7638, Start Num: 12

Candidate Starts for Snakehole_16:

(Start: 8 @7174 has 1 MA's), (Start: 12 @7240 has 33 MA's), (17, 7330), (20, 7366), (22, 7453),

Gene: Tedro_15 Start: 7417, Stop: 7815, Start Num: 12

Candidate Starts for Tedro_15:

(Start: 8 @7351 has 1 MA's), (Start: 12 @7417 has 33 MA's), (17, 7507), (20, 7543),

Gene: Tiggy93_15 Start: 7947, Stop: 8345, Start Num: 12

Candidate Starts for Tiggy93_15:

(Start: 12 @7947 has 33 MA's), (17, 8037), (20, 8073),

Gene: Tongui_14 Start: 7248, Stop: 7643, Start Num: 12

Candidate Starts for Tongui_14:

(Start: 8 @7182 has 1 MA's), (Start: 12 @7248 has 33 MA's), (17, 7338), (20, 7374), (21, 7428), (22, 7461), (30, 7632), (31, 7635),

