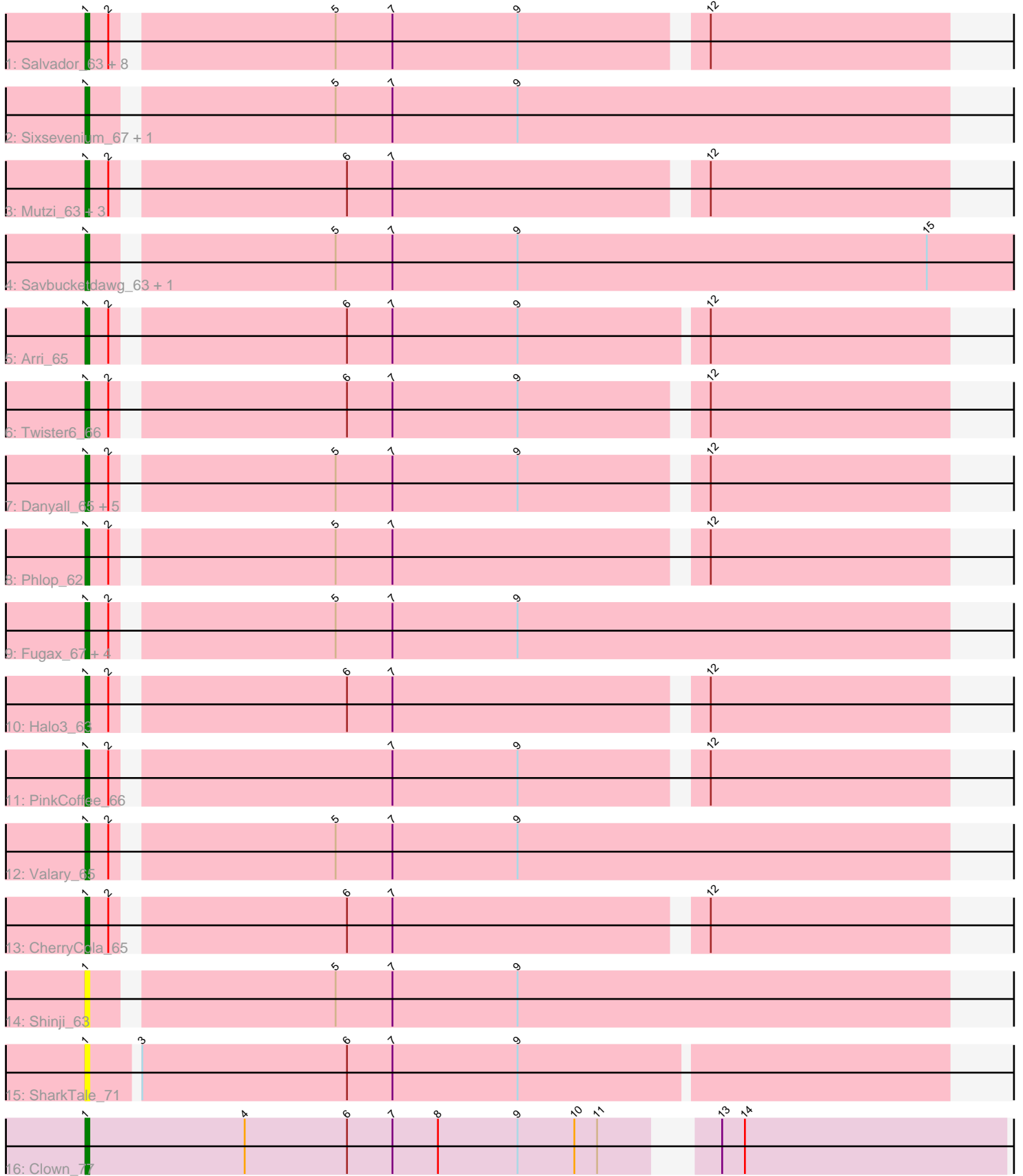


# Zoomed Pham 311802



Note: Tracks are now grouped by subcluster and scaled. Switching in subcluster is indicated by changes in track color. Track scale is now set by default to display the region 30 bp upstream of start 1 to 30 bp downstream of the last possible start. If this default region is judged to be packed too tightly with annotated starts, the track will be further scaled to only show that region of the ORF with annotated starts. This action will be indicated by adding "Zoomed" to the title. For starts, yellow indicates the location of called starts comprised solely of Glimmer/GeneMark auto-annotations, green indicates the location of called starts with at least 1 manual gene annotation.

## Pham 311802 Report

This analysis was run 06/27/26 on database version 652.

Pham number 311802 has 38 members, 5 are drafts.

Phages represented in each track:

- Track 1 : Salvador\_63, RogerDodger\_67, PullumCavea\_63, Togo\_63, Evamon\_63, JohnPork\_67, Sendy\_65, SmokingBunny\_64, Portcullis\_66
- Track 2 : Sixsevenium\_67, Bakery\_69
- Track 3 : Mutzi\_63, Fireball\_67, TillyBobJoe\_64, YungMoney\_64
- Track 4 : Savbucketdawg\_63, Jambalaya\_63
- Track 5 : Arri\_65
- Track 6 : Twister6\_66
- Track 7 : Danyall\_65, Wizard\_62, CoveyB\_65, VanDeWege\_66, Nubi\_64, Gezellig\_62
- Track 8 : Phlop\_62
- Track 9 : Fugax\_67, Barb\_66, Egi03\_64, ClamChowder\_66, KimmyK\_65
- Track 10 : Halo3\_63
- Track 11 : PinkCoffee\_66
- Track 12 : Valary\_65
- Track 13 : CherryCola\_65
- Track 14 : Shinji\_63
- Track 15 : SharkTale\_71
- Track 16 : Clown\_77

### ***Summary of Final Annotations (See graph section above for start numbers):***

The start number called the most often in the published annotations is 1, it was called in 33 of the 33 non-draft genes in the pham.

Genes that call this "Most Annotated" start:

- Arri\_65, Bakery\_69, Barb\_66, CherryCola\_65, ClamChowder\_66, Clown\_77, CoveyB\_65, Danyall\_65, Egi03\_64, Evamon\_63, Fireball\_67, Fugax\_67, Gezellig\_62, Halo3\_63, Jambalaya\_63, JohnPork\_67, KimmyK\_65, Mutzi\_63, Nubi\_64, Phlop\_62, PinkCoffee\_66, Portcullis\_66, PullumCavea\_63, RogerDodger\_67, Salvador\_63, Savbucketdawg\_63, Sendy\_65, SharkTale\_71, Shinji\_63, Sixsevenium\_67, SmokingBunny\_64, TillyBobJoe\_64, Togo\_63, Twister6\_66, Valary\_65, VanDeWege\_66, Wizard\_62, YungMoney\_64,

Genes that have the "Most Annotated" start but do not call it:

- 

Genes that do not have the "Most Annotated" start:

- 

### Summary by start number:

Start 1:

- Found in 38 of 38 ( 100.0% ) of genes in pham
- Manual Annotations of this start: 33 of 33
- Called 100.0% of time when present
- Phage (with cluster) where this start called: Arri\_65 (DC1), Bakery\_69 (DC1), Barb\_66 (DC1), CherryCola\_65 (DC1), ClamChowder\_66 (DC1), Clown\_77 (DC2), CoveyB\_65 (DC1), Danyall\_65 (DC1), Egi03\_64 (DC1), Evamon\_63 (DC1), Fireball\_67 (DC1), Fugax\_67 (DC1), Gezellig\_62 (DC1), Halo3\_63 (DC1), Jambalaya\_63 (DC1), JohnPork\_67 (DC1), KimmyK\_65 (DC1), Mutzi\_63 (DC1), Nubi\_64 (DC1), Phlop\_62 (DC1), PinkCoffee\_66 (DC1), Portcullis\_66 (DC1), PullumCavea\_63 (DC1), RogerDodger\_67 (DC1), Salvador\_63 (DC1), Savbucketdawg\_63 (DC1), Sendy\_65 (DC1), SharkTale\_71 (DC1), Shinji\_63 (DC1), Sixsevenium\_67 (DC1), SmokingBunny\_64 (DC1), TillyBobJoe\_64 (DC1), Togo\_63 (DC1), Twister6\_66 (DC1), Valary\_65 (DC1), VanDeWege\_66 (DC1), Wizard\_62 (DC1), YungMoney\_64 (DC1),

### Summary by clusters:

There are 2 clusters represented in this pham: DC2, DC1,

Info for manual annotations of cluster DC1:

- Start number 1 was manually annotated 32 times for cluster DC1.

Info for manual annotations of cluster DC2:

- Start number 1 was manually annotated 1 time for cluster DC2.

### Gene Information:

Gene: Arri\_65 Start: 47814, Stop: 48242, Start Num: 1

Candidate Starts for Arri\_65:

(Start: 1 @47814 has 33 MA's), (2, 47820), (6, 47877), (7, 47889), (9, 47922), (12, 47970), (22, 48168), (23, 48177),

Gene: Bakery\_69 Start: 50094, Stop: 50522, Start Num: 1

Candidate Starts for Bakery\_69:

(Start: 1 @50094 has 33 MA's), (5, 50154), (7, 50169), (9, 50202), (20, 50418), (22, 50451), (23, 50460),

Gene: Barb\_66 Start: 47691, Stop: 48119, Start Num: 1

Candidate Starts for Barb\_66:

(Start: 1 @47691 has 33 MA's), (2, 47697), (5, 47751), (7, 47766), (9, 47799), (20, 48015), (22, 48048), (23, 48057),

Gene: CherryCola\_65 Start: 48435, Stop: 48860, Start Num: 1

Candidate Starts for CherryCola\_65:

(Start: 1 @48435 has 33 MA's), (2, 48441), (6, 48498), (7, 48510), (12, 48588), (22, 48786), (23, 48795),

Gene: ClamChowder\_66 Start: 47691, Stop: 48119, Start Num: 1

Candidate Starts for ClamChowder\_66:

(Start: 1 @47691 has 33 MA's), (2, 47697), (5, 47751), (7, 47766), (9, 47799), (20, 48015), (22, 48048), (23, 48057),

Gene: Clown\_77 Start: 51931, Stop: 52368, Start Num: 1

Candidate Starts for Clown\_77:

(Start: 1 @51931 has 33 MA's), (4, 51973), (6, 52000), (7, 52012), (8, 52024), (9, 52045), (10, 52060), (11, 52066), (13, 52087), (14, 52093), (16, 52174), (17, 52177), (20, 52270), (21, 52279), (22, 52303), (23, 52312), (24, 52342),

Gene: CoveyB\_65 Start: 47528, Stop: 47950, Start Num: 1

Candidate Starts for CoveyB\_65:

(Start: 1 @47528 has 33 MA's), (2, 47534), (5, 47588), (7, 47603), (9, 47636), (12, 47681), (22, 47879), (23, 47888),

Gene: Danyall\_65 Start: 47785, Stop: 48210, Start Num: 1

Candidate Starts for Danyall\_65:

(Start: 1 @47785 has 33 MA's), (2, 47791), (5, 47845), (7, 47860), (9, 47893), (12, 47938), (22, 48136), (23, 48145),

Gene: Egi03\_64 Start: 47551, Stop: 47979, Start Num: 1

Candidate Starts for Egi03\_64:

(Start: 1 @47551 has 33 MA's), (2, 47557), (5, 47611), (7, 47626), (9, 47659), (20, 47875), (22, 47908), (23, 47917),

Gene: Evamon\_63 Start: 47229, Stop: 47651, Start Num: 1

Candidate Starts for Evamon\_63:

(Start: 1 @47229 has 33 MA's), (2, 47235), (5, 47289), (7, 47304), (9, 47337), (12, 47382), (20, 47547), (22, 47580), (23, 47589),

Gene: Fireball\_67 Start: 48087, Stop: 48512, Start Num: 1

Candidate Starts for Fireball\_67:

(Start: 1 @48087 has 33 MA's), (2, 48093), (6, 48150), (7, 48162), (12, 48240), (20, 48405), (22, 48438), (23, 48447),

Gene: Fugax\_67 Start: 47683, Stop: 48111, Start Num: 1

Candidate Starts for Fugax\_67:

(Start: 1 @47683 has 33 MA's), (2, 47689), (5, 47743), (7, 47758), (9, 47791), (20, 48007), (22, 48040), (23, 48049),

Gene: Gezellig\_62 Start: 47681, Stop: 48106, Start Num: 1

Candidate Starts for Gezellig\_62:

(Start: 1 @47681 has 33 MA's), (2, 47687), (5, 47741), (7, 47756), (9, 47789), (12, 47834), (22, 48032), (23, 48041),

Gene: Halo3\_63 Start: 48266, Stop: 48691, Start Num: 1

Candidate Starts for Halo3\_63:

(Start: 1 @48266 has 33 MA's), (2, 48272), (6, 48329), (7, 48341), (12, 48419), (18, 48524), (20, 48584), (22, 48617), (23, 48626),

Gene: Jambalaya\_63 Start: 47534, Stop: 47986, Start Num: 1

Candidate Starts for Jambalaya\_63:

(Start: 1 @47534 has 33 MA's), (5, 47594), (7, 47609), (9, 47642), (15, 47750), (22, 47912), (23, 47921),

Gene: JohnPork\_67 Start: 47818, Stop: 48243, Start Num: 1

Candidate Starts for JohnPork\_67:

(Start: 1 @47818 has 33 MA's), (2, 47824), (5, 47878), (7, 47893), (9, 47926), (12, 47971), (20, 48136), (22, 48169), (23, 48178),

Gene: KimmyK\_65 Start: 48125, Stop: 48553, Start Num: 1

Candidate Starts for KimmyK\_65:

(Start: 1 @48125 has 33 MA's), (2, 48131), (5, 48185), (7, 48200), (9, 48233), (20, 48449), (22, 48482), (23, 48491),

Gene: Mutzi\_63 Start: 48963, Stop: 49388, Start Num: 1

Candidate Starts for Mutzi\_63:

(Start: 1 @48963 has 33 MA's), (2, 48969), (6, 49026), (7, 49038), (12, 49116), (20, 49281), (22, 49314), (23, 49323),

Gene: Nubi\_64 Start: 47334, Stop: 47762, Start Num: 1

Candidate Starts for Nubi\_64:

(Start: 1 @47334 has 33 MA's), (2, 47340), (5, 47394), (7, 47409), (9, 47442), (12, 47493), (22, 47691), (23, 47700),

Gene: Phlop\_62 Start: 47691, Stop: 48113, Start Num: 1

Candidate Starts for Phlop\_62:

(Start: 1 @47691 has 33 MA's), (2, 47697), (5, 47751), (7, 47766), (12, 47844), (20, 48009), (22, 48042), (23, 48051),

Gene: PinkCoffee\_66 Start: 47697, Stop: 48122, Start Num: 1

Candidate Starts for PinkCoffee\_66:

(Start: 1 @47697 has 33 MA's), (2, 47703), (7, 47772), (9, 47805), (12, 47850), (20, 48015), (22, 48048), (23, 48057),

Gene: Portcullis\_66 Start: 47818, Stop: 48243, Start Num: 1

Candidate Starts for Portcullis\_66:

(Start: 1 @47818 has 33 MA's), (2, 47824), (5, 47878), (7, 47893), (9, 47926), (12, 47971), (20, 48136), (22, 48169), (23, 48178),

Gene: PullumCavea\_63 Start: 47868, Stop: 48290, Start Num: 1

Candidate Starts for PullumCavea\_63:

(Start: 1 @47868 has 33 MA's), (2, 47874), (5, 47928), (7, 47943), (9, 47976), (12, 48021), (20, 48186), (22, 48219), (23, 48228),

Gene: RogerDodger\_67 Start: 47990, Stop: 48418, Start Num: 1

Candidate Starts for RogerDodger\_67:

(Start: 1 @47990 has 33 MA's), (2, 47996), (5, 48050), (7, 48065), (9, 48098), (12, 48149), (20, 48314), (22, 48347), (23, 48356),

Gene: Salvador\_63 Start: 47227, Stop: 47649, Start Num: 1

Candidate Starts for Salvador\_63:

(Start: 1 @47227 has 33 MA's), (2, 47233), (5, 47287), (7, 47302), (9, 47335), (12, 47380), (20, 47545), (22, 47578), (23, 47587),

Gene: Savbucketdawg\_63 Start: 47534, Stop: 47986, Start Num: 1

Candidate Starts for Savbucketdawg\_63:

(Start: 1 @47534 has 33 MA's), (5, 47594), (7, 47609), (9, 47642), (15, 47750), (22, 47912), (23, 47921),

Gene: Sendy\_65 Start: 47535, Stop: 47963, Start Num: 1

Candidate Starts for Sendy\_65:

(Start: 1 @47535 has 33 MA's), (2, 47541), (5, 47595), (7, 47610), (9, 47643), (12, 47694), (20, 47859), (22, 47892), (23, 47901),

Gene: SharkTale\_71 Start: 51048, Stop: 51479, Start Num: 1

Candidate Starts for SharkTale\_71:

(Start: 1 @51048 has 33 MA's), (3, 51060), (6, 51114), (7, 51126), (9, 51159), (18, 51312), (22, 51405), (23, 51414),

Gene: Shinji\_63 Start: 47397, Stop: 47825, Start Num: 1

Candidate Starts for Shinji\_63:

(Start: 1 @47397 has 33 MA's), (5, 47457), (7, 47472), (9, 47505), (19, 47673), (20, 47721), (22, 47754), (23, 47763),

Gene: Sixsevenium\_67 Start: 49323, Stop: 49751, Start Num: 1

Candidate Starts for Sixsevenium\_67:

(Start: 1 @49323 has 33 MA's), (5, 49383), (7, 49398), (9, 49431), (20, 49647), (22, 49680), (23, 49689),

Gene: SmokingBunny\_64 Start: 47828, Stop: 48256, Start Num: 1

Candidate Starts for SmokingBunny\_64:

(Start: 1 @47828 has 33 MA's), (2, 47834), (5, 47888), (7, 47903), (9, 47936), (12, 47987), (20, 48152), (22, 48185), (23, 48194),

Gene: TillyBobJoe\_64 Start: 47687, Stop: 48112, Start Num: 1

Candidate Starts for TillyBobJoe\_64:

(Start: 1 @47687 has 33 MA's), (2, 47693), (6, 47750), (7, 47762), (12, 47840), (20, 48005), (22, 48038), (23, 48047),

Gene: Togo\_63 Start: 47828, Stop: 48256, Start Num: 1

Candidate Starts for Togo\_63:

(Start: 1 @47828 has 33 MA's), (2, 47834), (5, 47888), (7, 47903), (9, 47936), (12, 47987), (20, 48152), (22, 48185), (23, 48194),

Gene: Twister6\_66 Start: 47588, Stop: 48013, Start Num: 1

Candidate Starts for Twister6\_66:

(Start: 1 @47588 has 33 MA's), (2, 47594), (6, 47651), (7, 47663), (9, 47696), (12, 47741), (20, 47906), (22, 47939), (23, 47948),

Gene: Valary\_65 Start: 48435, Stop: 48863, Start Num: 1

Candidate Starts for Valary\_65:

(Start: 1 @48435 has 33 MA's), (2, 48441), (5, 48495), (7, 48510), (9, 48543), (22, 48792), (23, 48801),

Gene: VanDeWege\_66 Start: 47775, Stop: 48197, Start Num: 1

Candidate Starts for VanDeWege\_66:

(Start: 1 @47775 has 33 MA's), (2, 47781), (5, 47835), (7, 47850), (9, 47883), (12, 47928), (22, 48126), (23, 48135),

Gene: Wizard\_62 Start: 47681, Stop: 48106, Start Num: 1

Candidate Starts for Wizard\_62:

(Start: 1 @47681 has 33 MA's), (2, 47687), (5, 47741), (7, 47756), (9, 47789), (12, 47834), (22, 48032), (23, 48041),

Gene: YungMoney\_64 Start: 49803, Stop: 50228, Start Num: 1

Candidate Starts for YungMoney\_64:

(Start: 1 @49803 has 33 MA's), (2, 49809), (6, 49866), (7, 49878), (12, 49956), (20, 50121), (22, 50154), (23, 50163),