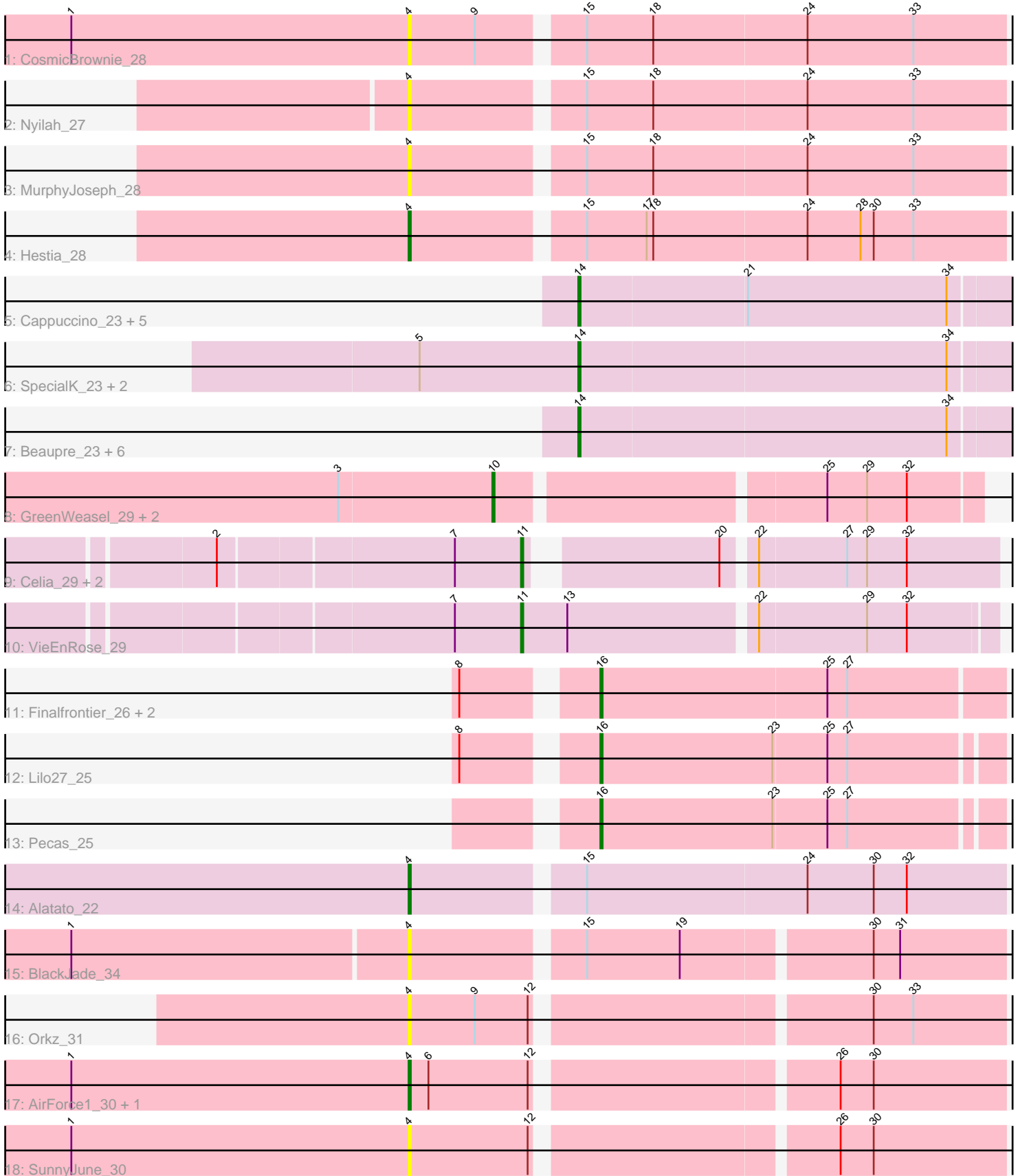


Pham 311804



Note: Tracks are now grouped by subcluster and scaled. Switching in subcluster is indicated by changes in track color. Track scale is now set by default to display the region 30 bp upstream of start 1 to 30 bp downstream of the last possible start. If this default region is judged to be packed too tightly with annotated starts, the track will be further scaled to only show that region of the ORF with annotated starts. This action will be indicated by adding "Zoomed" to the title. For starts, yellow indicates the location of called starts comprised solely of Glimmer/GeneMark auto-annotations, green indicates the location of called starts with at least 1 manual gene annotation.

Pham 311804 Report

This analysis was run 06/27/26 on database version 652.

Pham number 311804 has 38 members, 6 are drafts.

Phages represented in each track:

- Track 1 : CosmicBrownie_28
- Track 2 : Nyilah_27
- Track 3 : MurphyJoseph_28
- Track 4 : Hestia_28
- Track 5 : Cappuccino_23, Sabourin_23, Sooty_23, Kalimba_23, Gambol_23, Donkey_23
- Track 6 : SpecialK_23, Halsey_23, Moss_23
- Track 7 : Beaupre_23, Stuu_23, Gumpizza_23, Mysterium_23, Ashes_23, Giorgio_23, RockScotty_23
- Track 8 : GreenWeasel_29, BroPlease_28, phiHau3_29
- Track 9 : Celia_29, Itza_29, Urza_29
- Track 10 : VieEnRose_29
- Track 11 : Finalfrontier_26, BabyDaisy_26, Kate33_25
- Track 12 : Lilo27_25
- Track 13 : Pecas_25
- Track 14 : Alatato_22
- Track 15 : BlackJade_34
- Track 16 : Orkz_31
- Track 17 : AirForce1_30, Jinkies_31
- Track 18 : SunnyJune_30

Summary of Final Annotations (See graph section above for start numbers):

The start number called the most often in the published annotations is 14, it was called in 16 of the 32 non-draft genes in the pham.

Genes that call this "Most Annotated" start:

- Ashes_23, Beaupre_23, Cappuccino_23, Donkey_23, Gambol_23, Giorgio_23, Gumpizza_23, Halsey_23, Kalimba_23, Moss_23, Mysterium_23, RockScotty_23, Sabourin_23, Sooty_23, SpecialK_23, Stuu_23,

Genes that have the "Most Annotated" start but do not call it:

-

Genes that do not have the "Most Annotated" start:

- AirForce1_30, Alatato_22, BabyDaisy_26, BlackJade_34, BroPlease_28, Celia_29, CosmicBrownie_28, Finalfrontier_26, GreenWeasel_29, Hestia_28, Itza_29, Jinkies_31, Kate33_25, Lilo27_25, MurphyJoseph_28, Nyilah_27, Orkz_31, Pecas_25, SunnyJune_30, Urza_29, VieEnRose_29, phiHau3_29,

Summary by start number:

Start 4:

- Found in 10 of 38 (26.3%) of genes in pham
- Manual Annotations of this start: 4 of 32
- Called 100.0% of time when present
- Phage (with cluster) where this start called: AirForce1_30 (FL), Alatato_22 (FB), BlackJade_34 (FL), CosmicBrownie_28 (AY), Hestia_28 (AY), Jinkies_31 (FL), MurphyJoseph_28 (AY), Nyilah_27 (AY), Orkz_31 (FL), SunnyJune_30 (FL),

Start 10:

- Found in 3 of 38 (7.9%) of genes in pham
- Manual Annotations of this start: 3 of 32
- Called 100.0% of time when present
- Phage (with cluster) where this start called: BroPlease_28 (BD4), GreenWeasel_29 (BD4), phiHau3_29 (BD4),

Start 11:

- Found in 4 of 38 (10.5%) of genes in pham
- Manual Annotations of this start: 4 of 32
- Called 100.0% of time when present
- Phage (with cluster) where this start called: Celia_29 (BD6), Itza_29 (BD6), Urza_29 (BD6), VieEnRose_29 (BD6),

Start 14:

- Found in 16 of 38 (42.1%) of genes in pham
- Manual Annotations of this start: 16 of 32
- Called 100.0% of time when present
- Phage (with cluster) where this start called: Ashes_23 (AZ5), Beaupre_23 (AZ5), Cappuccino_23 (AZ5), Donkey_23 (AZ5), Gambol_23 (AZ5), Giorgio_23 (AZ5), Gumpizza_23 (AZ5), Halsey_23 (AZ5), Kalimba_23 (AZ5), Moss_23 (AZ5), Mysterium_23 (AZ5), RockScotty_23 (AZ5), Sabourin_23 (AZ5), Sooty_23 (AZ5), SpecialK_23 (AZ5), Stuu_23 (AZ5),

Start 16:

- Found in 5 of 38 (13.2%) of genes in pham
- Manual Annotations of this start: 5 of 32
- Called 100.0% of time when present
- Phage (with cluster) where this start called: BabyDaisy_26 (EB), Finalfrontier_26 (EB), Kate33_25 (EB), Lilo27_25 (EB), Pecas_25 (EB),

Summary by clusters:

There are 7 clusters represented in this pham: EB, BD4, FB, BD6, AY, FL, AZ5,

Info for manual annotations of cluster AY:

- Start number 4 was manually annotated 1 time for cluster AY.

Info for manual annotations of cluster AZ5:

- Start number 14 was manually annotated 16 times for cluster AZ5.

Info for manual annotations of cluster BD4:

- Start number 10 was manually annotated 3 times for cluster BD4.

Info for manual annotations of cluster BD6:

- Start number 11 was manually annotated 4 times for cluster BD6.

Info for manual annotations of cluster EB:

- Start number 16 was manually annotated 5 times for cluster EB.

Info for manual annotations of cluster FB:

- Start number 4 was manually annotated 1 time for cluster FB.

Info for manual annotations of cluster FL:

- Start number 4 was manually annotated 2 times for cluster FL.

Gene Information:

Gene: AirForce1_30 Start: 22259, Stop: 22513, Start Num: 4

Candidate Starts for AirForce1_30:

(1, 22106), (Start: 4 @22259 has 4 MA's), (6, 22268), (12, 22313), (26, 22439), (30, 22454),

Gene: Alatato_22 Start: 17463, Stop: 17723, Start Num: 4

Candidate Starts for Alatato_22:

(Start: 4 @17463 has 4 MA's), (15, 17535), (24, 17634), (30, 17664), (32, 17679),

Gene: Ashes_23 Start: 18268, Stop: 18474, Start Num: 14

Candidate Starts for Ashes_23:

(Start: 14 @18268 has 16 MA's), (34, 18433),

Gene: BabyDaisy_26 Start: 19813, Stop: 19992, Start Num: 16

Candidate Starts for BabyDaisy_26:

(8, 19762), (Start: 16 @19813 has 5 MA's), (25, 19915), (27, 19924),

Gene: Beaupre_23 Start: 18269, Stop: 18475, Start Num: 14

Candidate Starts for Beaupre_23:

(Start: 14 @18269 has 16 MA's), (34, 18434),

Gene: BlackJade_34 Start: 24870, Stop: 25124, Start Num: 4

Candidate Starts for BlackJade_34:

(1, 24720), (Start: 4 @24870 has 4 MA's), (15, 24942), (19, 24984), (30, 25065), (31, 25077),

Gene: BroPlease_28 Start: 22457, Stop: 22663, Start Num: 10

Candidate Starts for BroPlease_28:

(3, 22388), (Start: 10 @22457 has 3 MA's), (25, 22595), (29, 22613), (32, 22631),

Gene: Cappuccino_23 Start: 18179, Stop: 18385, Start Num: 14

Candidate Starts for Cappuccino_23:

(Start: 14 @18179 has 16 MA's), (21, 18254), (34, 18344),

Gene: Celia_29 Start: 23000, Stop: 23194, Start Num: 11

Candidate Starts for Celia_29:

(2, 22868), (7, 22970), (Start: 11 @23000 has 4 MA's), (20, 23075), (22, 23087), (27, 23126), (29, 23135), (32, 23153),

Gene: CosmicBrownie_28 Start: 20183, Stop: 20443, Start Num: 4

Candidate Starts for CosmicBrownie_28:

(1, 20030), (Start: 4 @20183 has 4 MA's), (9, 20213), (15, 20255), (18, 20285), (24, 20354), (33, 20402),

Gene: Donkey_23 Start: 18179, Stop: 18385, Start Num: 14

Candidate Starts for Donkey_23:

(Start: 14 @18179 has 16 MA's), (21, 18254), (34, 18344),

Gene: Finalfrontier_26 Start: 20179, Stop: 20358, Start Num: 16

Candidate Starts for Finalfrontier_26:

(8, 20128), (Start: 16 @20179 has 5 MA's), (25, 20281), (27, 20290),

Gene: Gambol_23 Start: 18179, Stop: 18385, Start Num: 14

Candidate Starts for Gambol_23:

(Start: 14 @18179 has 16 MA's), (21, 18254), (34, 18344),

Gene: Giorgio_23 Start: 18276, Stop: 18482, Start Num: 14

Candidate Starts for Giorgio_23:

(Start: 14 @18276 has 16 MA's), (34, 18441),

Gene: GreenWeasel_29 Start: 22466, Stop: 22672, Start Num: 10

Candidate Starts for GreenWeasel_29:

(3, 22397), (Start: 10 @22466 has 3 MA's), (25, 22604), (29, 22622), (32, 22640),

Gene: Gumpizza_23 Start: 18269, Stop: 18475, Start Num: 14

Candidate Starts for Gumpizza_23:

(Start: 14 @18269 has 16 MA's), (34, 18434),

Gene: Halsey_23 Start: 18274, Stop: 18480, Start Num: 14

Candidate Starts for Halsey_23:

(5, 18202), (Start: 14 @18274 has 16 MA's), (34, 18439),

Gene: Hestia_28 Start: 20403, Stop: 20663, Start Num: 4

Candidate Starts for Hestia_28:

(Start: 4 @20403 has 4 MA's), (15, 20475), (17, 20502), (18, 20505), (24, 20574), (28, 20598), (30, 20604), (33, 20622),

Gene: Itza_29 Start: 22914, Stop: 23108, Start Num: 11

Candidate Starts for Itza_29:

(2, 22782), (7, 22884), (Start: 11 @22914 has 4 MA's), (20, 22989), (22, 23001), (27, 23040), (29, 23049), (32, 23067),

Gene: Jinkies_31 Start: 24736, Stop: 24990, Start Num: 4

Candidate Starts for Jinkies_31:

(1, 24583), (Start: 4 @24736 has 4 MA's), (6, 24745), (12, 24790), (26, 24916), (30, 24931),

Gene: Kalimba_23 Start: 18180, Stop: 18386, Start Num: 14
Candidate Starts for Kalimba_23:

(Start: 14 @18180 has 16 MA's), (21, 18255), (34, 18345),

Gene: Kate33_25 Start: 19636, Stop: 19815, Start Num: 16

Candidate Starts for Kate33_25:

(8, 19585), (Start: 16 @19636 has 5 MA's), (25, 19738), (27, 19747),

Gene: Lilo27_25 Start: 19648, Stop: 19824, Start Num: 16

Candidate Starts for Lilo27_25:

(8, 19597), (Start: 16 @19648 has 5 MA's), (23, 19726), (25, 19750), (27, 19759),

Gene: Moss_23 Start: 18269, Stop: 18475, Start Num: 14

Candidate Starts for Moss_23:

(5, 18197), (Start: 14 @18269 has 16 MA's), (34, 18434),

Gene: MurphyJoseph_28 Start: 20309, Stop: 20569, Start Num: 4

Candidate Starts for MurphyJoseph_28:

(Start: 4 @20309 has 4 MA's), (15, 20381), (18, 20411), (24, 20480), (33, 20528),

Gene: Mysterium_23 Start: 18269, Stop: 18475, Start Num: 14

Candidate Starts for Mysterium_23:

(Start: 14 @18269 has 16 MA's), (34, 18434),

Gene: Nyilah_27 Start: 20212, Stop: 20472, Start Num: 4

Candidate Starts for Nyilah_27:

(Start: 4 @20212 has 4 MA's), (15, 20284), (18, 20314), (24, 20383), (33, 20431),

Gene: Orkz_31 Start: 21461, Stop: 21715, Start Num: 4

Candidate Starts for Orkz_31:

(Start: 4 @21461 has 4 MA's), (9, 21491), (12, 21515), (30, 21656), (33, 21674),

Gene: Pecas_25 Start: 19672, Stop: 19848, Start Num: 16

Candidate Starts for Pecas_25:

(Start: 16 @19672 has 5 MA's), (23, 19750), (25, 19774), (27, 19783),

Gene: RockScotty_23 Start: 18245, Stop: 18451, Start Num: 14

Candidate Starts for RockScotty_23:

(Start: 14 @18245 has 16 MA's), (34, 18410),

Gene: Sabourin_23 Start: 18178, Stop: 18384, Start Num: 14

Candidate Starts for Sabourin_23:

(Start: 14 @18178 has 16 MA's), (21, 18253), (34, 18343),

Gene: Sooty_23 Start: 18181, Stop: 18387, Start Num: 14

Candidate Starts for Sooty_23:

(Start: 14 @18181 has 16 MA's), (21, 18256), (34, 18346),

Gene: SpecialK_23 Start: 18176, Stop: 18382, Start Num: 14

Candidate Starts for SpecialK_23:

(5, 18104), (Start: 14 @18176 has 16 MA's), (34, 18341),

Gene: Stuu_23 Start: 18268, Stop: 18474, Start Num: 14

Candidate Starts for Stuu_23:

(Start: 14 @18268 has 16 MA's), (34, 18433),

Gene: SunnyJune_30 Start: 23435, Stop: 23689, Start Num: 4

Candidate Starts for SunnyJune_30:

(1, 23282), (Start: 4 @23435 has 4 MA's), (12, 23489), (26, 23615), (30, 23630),

Gene: Urza_29 Start: 22935, Stop: 23129, Start Num: 11

Candidate Starts for Urza_29:

(2, 22803), (7, 22905), (Start: 11 @22935 has 4 MA's), (20, 23010), (22, 23022), (27, 23061), (29, 23070), (32, 23088),

Gene: VieEnRose_29 Start: 23003, Stop: 23209, Start Num: 11

Candidate Starts for VieEnRose_29:

(7, 22973), (Start: 11 @23003 has 4 MA's), (13, 23024), (22, 23105), (29, 23153), (32, 23171),

Gene: phiHau3_29 Start: 22430, Stop: 22636, Start Num: 10

Candidate Starts for phiHau3_29:

(3, 22361), (Start: 10 @22430 has 3 MA's), (25, 22568), (29, 22586), (32, 22604),