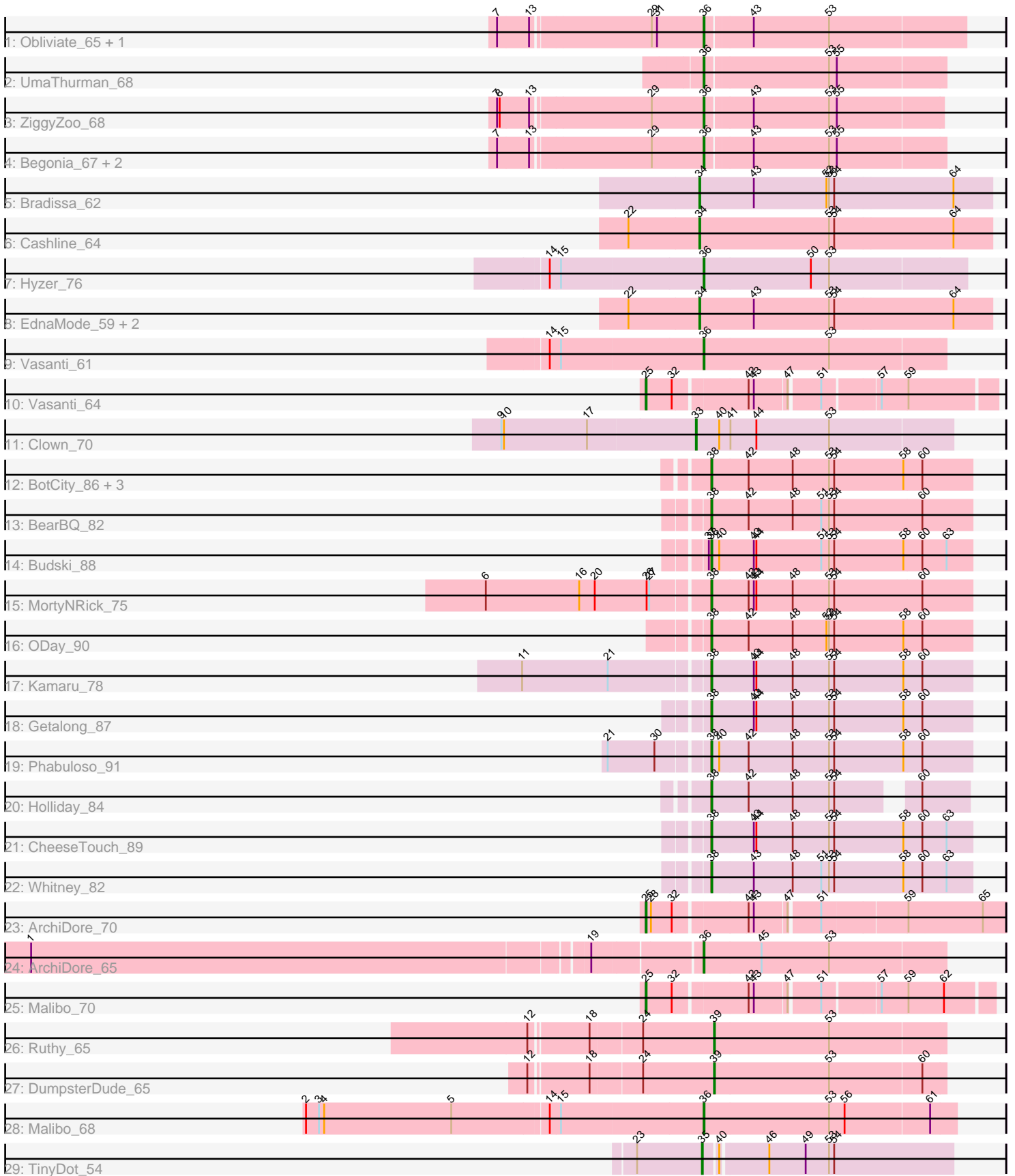


Pham 311809



Note: Tracks are now grouped by subcluster and scaled. Switching in subcluster is indicated by changes in track color. Track scale is now set by default to display the region 30 bp upstream of start 1 to 30 bp downstream of the last possible start. If this default region is judged to be packed too tightly with annotated starts, the track will be further scaled to only show that region of the ORF with annotated starts. This action will be indicated by adding "Zoomed" to the title. For starts, yellow indicates the location of called starts comprised solely of Glimmer/GeneMark auto-annotations, green indicates the location of called starts with at least 1 manual gene annotation.

Pham 311809 Report

This analysis was run 06/27/26 on database version 652.

Pham number 311809 has 37 members, 1 are drafts.

Phages represented in each track:

- Track 1 : Obliviate_65, Wisp_67
- Track 2 : UmaThurman_68
- Track 3 : ZiggyZoo_68
- Track 4 : Begonia_67, Archis_69, Malachai_67
- Track 5 : Bradissa_62
- Track 6 : Cashline_64
- Track 7 : Hyzer_76
- Track 8 : EdnaMode_59, Floral_67, Pollux_69
- Track 9 : Vasanti_61
- Track 10 : Vasanti_64
- Track 11 : Clown_70
- Track 12 : BotCity_86, Kenna_79, Lutum_85, BENtherdunthat_84
- Track 13 : BearBQ_82
- Track 14 : Budski_88
- Track 15 : MortyNRick_75
- Track 16 : ODay_90
- Track 17 : Kamaru_78
- Track 18 : Getalong_87
- Track 19 : Phabuloso_91
- Track 20 : Holliday_84
- Track 21 : CheeseTouch_89
- Track 22 : Whitney_82
- Track 23 : ArchiDore_70
- Track 24 : ArchiDore_65
- Track 25 : Malibo_70
- Track 26 : Ruthy_65
- Track 27 : DumpsterDude_65
- Track 28 : Malibo_68
- Track 29 : TinyDot_54

Summary of Final Annotations (See graph section above for start numbers):

The start number called the most often in the published annotations is 38, it was called in 14 of the 36 non-draft genes in the pham.

Genes that call this "Most Annotated" start:

- BENtherdunthat_84, BearBQ_82, BotCity_86, Budski_88, CheeseTouch_89, Getalong_87, Holliday_84, Kamaru_78, Kenna_79, Lutum_85, MortyNRick_75, ODay_90, Phabuloso_91, Whitney_82,

Genes that have the "Most Annotated" start but do not call it:

-

Genes that do not have the "Most Annotated" start:

- ArchiDore_65, ArchiDore_70, Archis_69, Begonia_67, Bradissa_62, Cashline_64, Clown_70, DumpsterDude_65, EdnaMode_59, Floral_67, Hyzer_76, Malachai_67, Malibo_68, Malibo_70, Obliviate_65, Pollux_69, Ruthy_65, TinyDot_54, UmaThurman_68, Vasanti_61, Vasanti_64, Wisp_67, ZiggyZoo_68,

Summary by start number:

Start 25:

- Found in 3 of 37 (8.1%) of genes in pham
- Manual Annotations of this start: 3 of 36
- Called 100.0% of time when present
- Phage (with cluster) where this start called: ArchiDore_70 (DW), Malibo_70 (DW), Vasanti_64 (CZ2),

Start 33:

- Found in 1 of 37 (2.7%) of genes in pham
- Manual Annotations of this start: 1 of 36
- Called 100.0% of time when present
- Phage (with cluster) where this start called: Clown_70 (DC2),

Start 34:

- Found in 5 of 37 (13.5%) of genes in pham
- Manual Annotations of this start: 5 of 36
- Called 100.0% of time when present
- Phage (with cluster) where this start called: Bradissa_62 (CY1), Cashline_64 (CY6), EdnaMode_59 (CZ2), Floral_67 (CY1), Pollux_69 (CY1),

Start 35:

- Found in 1 of 37 (2.7%) of genes in pham
- Manual Annotations of this start: 1 of 36
- Called 100.0% of time when present
- Phage (with cluster) where this start called: TinyDot_54 (singleton),

Start 36:

- Found in 11 of 37 (29.7%) of genes in pham
- Manual Annotations of this start: 10 of 36
- Called 100.0% of time when present
- Phage (with cluster) where this start called: ArchiDore_65 (DW), Archis_69 (CV), Begonia_67 (CV), Hyzer_76 (CZ1), Malachai_67 (CV), Malibo_68 (DW), Obliviate_65 (CV), UmaThurman_68 (CV), Vasanti_61 (CZ2), Wisp_67 (CV), ZiggyZoo_68 (CV),

Start 38:

- Found in 14 of 37 (37.8%) of genes in pham

- Manual Annotations of this start: 14 of 36
- Called 100.0% of time when present
- Phage (with cluster) where this start called: BENTherdunthat_84 (DN1), BearBQ_82 (DN), BotCity_86 (DN), Budski_88 (DN), CheeseTouch_89 (DN1), Getalong_87 (DN1), Holliday_84 (DN1), Kamaru_78 (DN1), Kenna_79 (DN1), Lutum_85 (DN1), MortyNRick_75 (DN), ODay_90 (DN), Phabuloso_91 (DN1), Whitney_82 (DN1),

Start 39:

- Found in 2 of 37 (5.4%) of genes in pham
- Manual Annotations of this start: 2 of 36
- Called 100.0% of time when present
- Phage (with cluster) where this start called: DumpsterDude_65 (DW), Ruthy_65 (DW),

Summary by clusters:

There are 10 clusters represented in this pham: DN, singleton, CY6, CZ2, CZ1, CY1, DN1, DW, DC2, CV,

Info for manual annotations of cluster CV:

- Start number 36 was manually annotated 6 times for cluster CV.

Info for manual annotations of cluster CY1:

- Start number 34 was manually annotated 3 times for cluster CY1.

Info for manual annotations of cluster CY6:

- Start number 34 was manually annotated 1 time for cluster CY6.

Info for manual annotations of cluster CZ1:

- Start number 36 was manually annotated 1 time for cluster CZ1.

Info for manual annotations of cluster CZ2:

- Start number 25 was manually annotated 1 time for cluster CZ2.
- Start number 34 was manually annotated 1 time for cluster CZ2.
- Start number 36 was manually annotated 1 time for cluster CZ2.

Info for manual annotations of cluster DC2:

- Start number 33 was manually annotated 1 time for cluster DC2.

Info for manual annotations of cluster DN:

- Start number 38 was manually annotated 5 times for cluster DN.

Info for manual annotations of cluster DN1:

- Start number 38 was manually annotated 9 times for cluster DN1.

Info for manual annotations of cluster DW:

- Start number 25 was manually annotated 2 times for cluster DW.
- Start number 36 was manually annotated 2 times for cluster DW.
- Start number 39 was manually annotated 2 times for cluster DW.

Gene Information:

Gene: ArchiDore_70 Start: 48177, Stop: 48563, Start Num: 25

Candidate Starts for ArchiDore_70:

(Start: 25 @48177 has 3 MA's), (28, 48183), (32, 48207), (42, 48285), (43, 48291), (47, 48327), (51, 48360), (59, 48453), (65, 48537),

Gene: ArchiDore_65 Start: 46601, Stop: 46876, Start Num: 36

Candidate Starts for ArchiDore_65:

(1, 45857), (19, 46487), (Start: 36 @46601 has 10 MA's), (45, 46667), (53, 46745),

Gene: Archis_69 Start: 41921, Stop: 42187, Start Num: 36

Candidate Starts for Archis_69:

(7, 41693), (13, 41729), (29, 41861), (Start: 36 @41921 has 10 MA's), (43, 41972), (53, 42059), (55, 42068),

Gene: BENtherdunthat_84 Start: 46855, Stop: 47151, Start Num: 38

Candidate Starts for BENtherdunthat_84:

(Start: 38 @46855 has 14 MA's), (42, 46897), (48, 46948), (53, 46990), (54, 46996), (58, 47074), (60, 47095),

Gene: BearBQ_82 Start: 47817, Stop: 48113, Start Num: 38

Candidate Starts for BearBQ_82:

(Start: 38 @47817 has 14 MA's), (42, 47859), (48, 47910), (51, 47943), (53, 47952), (54, 47958), (60, 48057),

Gene: Begonia_67 Start: 45214, Stop: 45483, Start Num: 36

Candidate Starts for Begonia_67:

(7, 44986), (13, 45022), (29, 45154), (Start: 36 @45214 has 10 MA's), (43, 45265), (53, 45352), (55, 45361),

Gene: BotCity_86 Start: 48384, Stop: 48680, Start Num: 38

Candidate Starts for BotCity_86:

(Start: 38 @48384 has 14 MA's), (42, 48426), (48, 48477), (53, 48519), (54, 48525), (58, 48603), (60, 48624),

Gene: Bradissa_62 Start: 45039, Stop: 45371, Start Num: 34

Candidate Starts for Bradissa_62:

(Start: 34 @45039 has 5 MA's), (43, 45102), (52, 45186), (53, 45189), (54, 45195), (64, 45327),

Gene: Budski_88 Start: 49328, Stop: 49624, Start Num: 38

Candidate Starts for Budski_88:

(37, 49325), (Start: 38 @49328 has 14 MA's), (40, 49337), (43, 49376), (44, 49379), (51, 49454), (53, 49463), (54, 49469), (58, 49547), (60, 49568), (63, 49595),

Gene: Cashline_64 Start: 45838, Stop: 46170, Start Num: 34

Candidate Starts for Cashline_64:

(22, 45757), (Start: 34 @45838 has 5 MA's), (53, 45988), (54, 45994), (64, 46126),

Gene: CheeseTouch_89 Start: 44557, Stop: 44853, Start Num: 38

Candidate Starts for CheeseTouch_89:

(Start: 38 @44557 has 14 MA's), (43, 44605), (44, 44608), (48, 44650), (53, 44692), (54, 44698), (58, 44776), (60, 44797), (63, 44824),

Gene: Clown_70 Start: 48323, Stop: 48616, Start Num: 33

Candidate Starts for Clown_70:

(9, 48101), (10, 48104), (17, 48200), (Start: 33 @48323 has 1 MA's), (40, 48350), (41, 48362), (44, 48392), (53, 48476),

Gene: DumpsterDude_65 Start: 48344, Stop: 48607, Start Num: 39

Candidate Starts for DumpsterDude_65:

(12, 48143), (18, 48206), (24, 48263), (Start: 39 @48344 has 2 MA's), (53, 48476), (60, 48581),

Gene: EdnaMode_59 Start: 39827, Stop: 40159, Start Num: 34

Candidate Starts for EdnaMode_59:

(22, 39746), (Start: 34 @39827 has 5 MA's), (43, 39890), (53, 39977), (54, 39983), (64, 40115),

Gene: Floral_67 Start: 46996, Stop: 47328, Start Num: 34

Candidate Starts for Floral_67:

(22, 46915), (Start: 34 @46996 has 5 MA's), (43, 47059), (53, 47146), (54, 47152), (64, 47284),

Gene: Getalong_87 Start: 49310, Stop: 49606, Start Num: 38

Candidate Starts for Getalong_87:

(Start: 38 @49310 has 14 MA's), (43, 49358), (44, 49361), (48, 49403), (53, 49445), (54, 49451), (58, 49529), (60, 49550),

Gene: Holliday_84 Start: 49449, Stop: 49715, Start Num: 38

Candidate Starts for Holliday_84:

(Start: 38 @49449 has 14 MA's), (42, 49491), (48, 49542), (53, 49584), (54, 49590), (60, 49662),

Gene: Hyzer_76 Start: 50995, Stop: 51294, Start Num: 36

Candidate Starts for Hyzer_76:

(14, 50821), (15, 50833), (Start: 36 @50995 has 10 MA's), (50, 51118), (53, 51139),

Gene: Kamaru_78 Start: 45858, Stop: 46154, Start Num: 38

Candidate Starts for Kamaru_78:

(11, 45651), (21, 45750), (Start: 38 @45858 has 14 MA's), (43, 45906), (44, 45909), (48, 45951), (53, 45993), (54, 45999), (58, 46077), (60, 46098),

Gene: Kenna_79 Start: 46128, Stop: 46424, Start Num: 38

Candidate Starts for Kenna_79:

(Start: 38 @46128 has 14 MA's), (42, 46170), (48, 46221), (53, 46263), (54, 46269), (58, 46347), (60, 46368),

Gene: Lutum_85 Start: 47290, Stop: 47586, Start Num: 38

Candidate Starts for Lutum_85:

(Start: 38 @47290 has 14 MA's), (42, 47332), (48, 47383), (53, 47425), (54, 47431), (58, 47509), (60, 47530),

Gene: Malachai_67 Start: 45214, Stop: 45483, Start Num: 36

Candidate Starts for Malachai_67:

(7, 44986), (13, 45022), (29, 45154), (Start: 36 @45214 has 10 MA's), (43, 45265), (53, 45352), (55, 45361),

Gene: Malibo_70 Start: 46267, Stop: 46632, Start Num: 25

Candidate Starts for Malibo_70:

(Start: 25 @46267 has 3 MA's), (32, 46297), (42, 46375), (43, 46381), (47, 46417), (51, 46450), (57, 46510), (59, 46540), (62, 46579),

Gene: Malibo_68 Start: 45756, Stop: 46043, Start Num: 36

Candidate Starts for Malibo_68:

(2, 45306), (3, 45321), (4, 45327), (5, 45474), (14, 45582), (15, 45594), (Start: 36 @45756 has 10 MA's), (53, 45900), (56, 45918), (61, 46014),

Gene: MortyNRick_75 Start: 46010, Stop: 46306, Start Num: 38

Candidate Starts for MortyNRick_75:

(6, 45758), (16, 45866), (20, 45884), (26, 45944), (27, 45947), (Start: 38 @46010 has 14 MA's), (42, 46052), (43, 46058), (44, 46061), (48, 46103), (53, 46145), (54, 46151), (60, 46250),

Gene: ODay_90 Start: 49517, Stop: 49813, Start Num: 38

Candidate Starts for ODay_90:

(Start: 38 @49517 has 14 MA's), (42, 49559), (48, 49610), (52, 49649), (53, 49652), (54, 49658), (58, 49736), (60, 49757),

Gene: Obliviate_65 Start: 41567, Stop: 41860, Start Num: 36

Candidate Starts for Obliviate_65:

(7, 41339), (13, 41375), (29, 41507), (31, 41513), (Start: 36 @41567 has 10 MA's), (43, 41618), (53, 41705),

Gene: Phabuloso_91 Start: 48782, Stop: 49078, Start Num: 38

Candidate Starts for Phabuloso_91:

(21, 48674), (30, 48728), (Start: 38 @48782 has 14 MA's), (40, 48791), (42, 48824), (48, 48875), (53, 48917), (54, 48923), (58, 49001), (60, 49022),

Gene: Pollux_69 Start: 46996, Stop: 47328, Start Num: 34

Candidate Starts for Pollux_69:

(22, 46915), (Start: 34 @46996 has 5 MA's), (43, 47059), (53, 47146), (54, 47152), (64, 47284),

Gene: Ruthy_65 Start: 46522, Stop: 46785, Start Num: 39

Candidate Starts for Ruthy_65:

(12, 46321), (18, 46384), (24, 46441), (Start: 39 @46522 has 2 MA's), (53, 46654),

Gene: TinyDot_54 Start: 34255, Stop: 34533, Start Num: 35

Candidate Starts for TinyDot_54:

(23, 34180), (Start: 35 @34255 has 1 MA's), (40, 34270), (46, 34321), (49, 34363), (53, 34390), (54, 34396),

Gene: UmaThurman_68 Start: 43634, Stop: 43903, Start Num: 36

Candidate Starts for UmaThurman_68:

(Start: 36 @43634 has 10 MA's), (53, 43772), (55, 43781),

Gene: Vasanti_61 Start: 41346, Stop: 41621, Start Num: 36

Candidate Starts for Vasanti_61:

(14, 41172), (15, 41184), (Start: 36 @41346 has 10 MA's), (53, 41490),

Gene: Vasanti_64 Start: 42849, Stop: 43217, Start Num: 25

Candidate Starts for Vasanti_64:

(Start: 25 @42849 has 3 MA's), (32, 42879), (42, 42957), (43, 42963), (47, 42999), (51, 43032), (57, 43092), (59, 43122),

Gene: Whitney_82 Start: 48631, Stop: 48927, Start Num: 38

Candidate Starts for Whitney_82:

(Start: 38 @48631 has 14 MA's), (43, 48679), (48, 48724), (51, 48757), (53, 48766), (54, 48772), (58, 48850), (60, 48871), (63, 48898),

Gene: Wisp_67 Start: 43332, Stop: 43601, Start Num: 36

Candidate Starts for Wisp_67:

(7, 43104), (13, 43140), (29, 43272), (31, 43278), (Start: 36 @43332 has 10 MA's), (43, 43383), (53, 43470),

Gene: ZiggyZoo_68 Start: 44385, Stop: 44651, Start Num: 36

Candidate Starts for ZiggyZoo_68:

(7, 44157), (8, 44160), (13, 44193), (29, 44325), (Start: 36 @44385 has 10 MA's), (43, 44436), (53, 44523), (55, 44532),