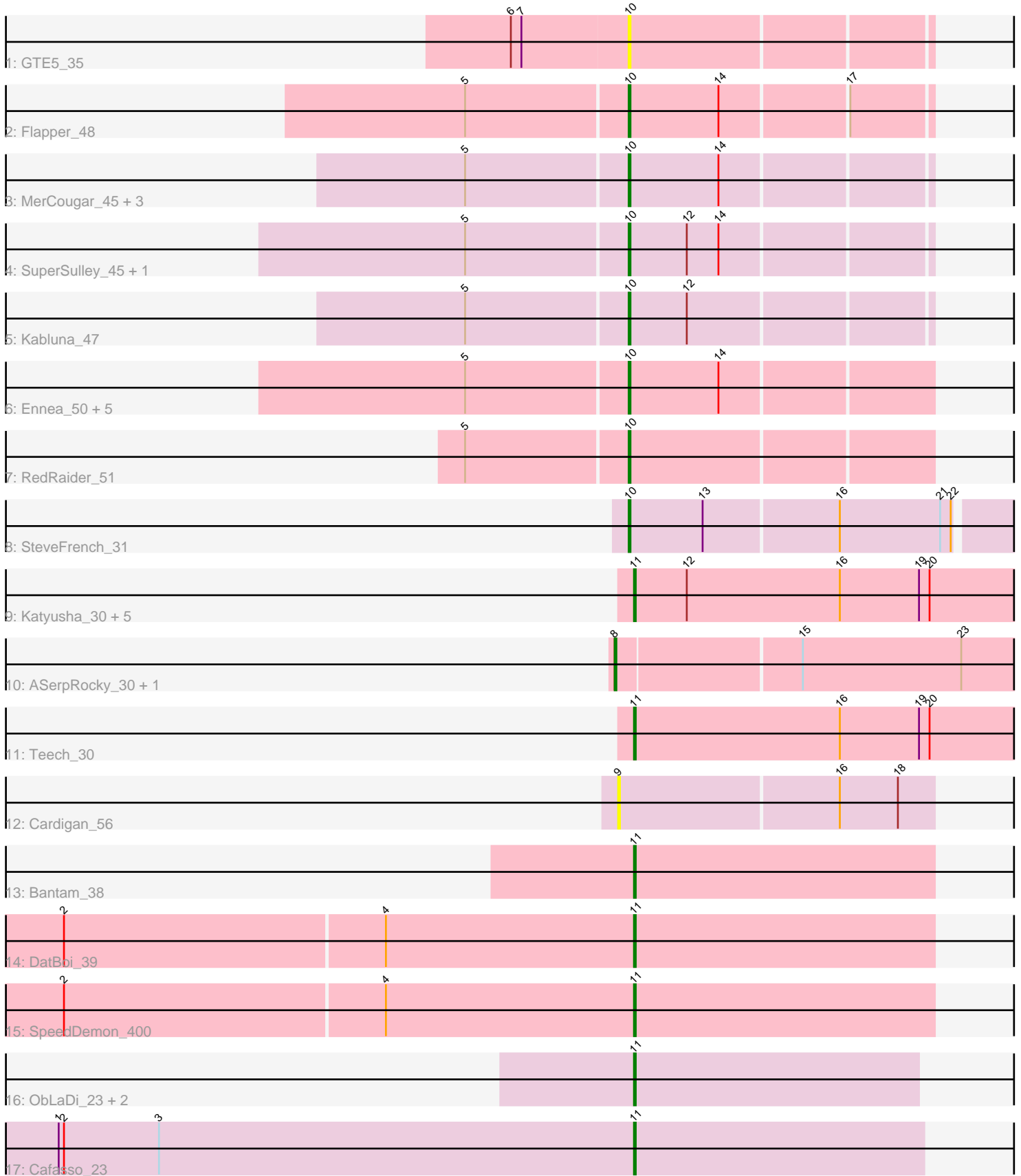


Pham 311828



Note: Tracks are now grouped by subcluster and scaled. Switching in subcluster is indicated by changes in track color. Track scale is now set by default to display the region 30 bp upstream of start 1 to 30 bp downstream of the last possible start. If this default region is judged to be packed too tightly with annotated starts, the track will be further scaled to only show that region of the ORF with annotated starts. This action will be indicated by adding "Zoomed" to the title. For starts, yellow indicates the location of called starts comprised solely of Glimmer/GeneMark auto-annotations, green indicates the location of called starts with at least 1 manual gene annotation.

Pham 311828 Report

This analysis was run 06/27/26 on database version 652.

Pham number 311828 has 34 members, 2 are drafts.

Phages represented in each track:

- Track 1 : GTE5_35
- Track 2 : Flapper_48
- Track 3 : MerCougar_45, NosilaM_47, StarStruck_45, Outis_45
- Track 4 : SuperSulley_45, Buggaboo_45
- Track 5 : Kabluna_47
- Track 6 : Ennea_50, Lollipop1437_49, Bonum_47, Float294_46, Patio_47, Skysand_46
- Track 7 : RedRaider_51
- Track 8 : SteveFrench_31
- Track 9 : Katyusha_30, Benczkowski14_30, Tredge_30, Kvothe_30, Niagara_30, Teatealatte_30
- Track 10 : ASerpRocky_30, Demosthenes_30
- Track 11 : Teech_30
- Track 12 : Cardigan_56
- Track 13 : Bantam_38
- Track 14 : DatBoi_39
- Track 15 : SpeedDemon_400
- Track 16 : ObLaDi_23, Aleemily_22, ModicumRichard_23
- Track 17 : Cafasso_23

Summary of Final Annotations (See graph section above for start numbers):

The start number called the most often in the published annotations is 10, it was called in 16 of the 32 non-draft genes in the pham.

Genes that call this "Most Annotated" start:

- Bonum_47, Buggaboo_45, Ennea_50, Flapper_48, Float294_46, GTE5_35, Kabluna_47, Lollipop1437_49, MerCougar_45, NosilaM_47, Outis_45, Patio_47, RedRaider_51, Skysand_46, StarStruck_45, SteveFrench_31, SuperSulley_45,

Genes that have the "Most Annotated" start but do not call it:

-

Genes that do not have the "Most Annotated" start:

- ASerpRocky_30, Aleemily_22, Bantam_38, Benczkowski14_30, Cafasso_23, Cardigan_56, DatBoi_39, Demosthenes_30, Katyusha_30, Kvothe_30, ModicumRichard_23, Niagara_30, ObLaDi_23, SpeedDemon_400, Teatealatte_30, Teech_30, Tredge_30,

Summary by start number:

Start 8:

- Found in 2 of 34 (5.9%) of genes in pham
- Manual Annotations of this start: 2 of 32
- Called 100.0% of time when present
- Phage (with cluster) where this start called: ASerpRocky_30 (CS4), Demosthenes_30 (CS4),

Start 9:

- Found in 1 of 34 (2.9%) of genes in pham
- No Manual Annotations of this start.
- Called 100.0% of time when present
- Phage (with cluster) where this start called: Cardigan_56 (DD),

Start 10:

- Found in 17 of 34 (50.0%) of genes in pham
- Manual Annotations of this start: 16 of 32
- Called 100.0% of time when present
- Phage (with cluster) where this start called: Bonum_47 (CR2), Buggaboo_45 (CR2), Ennea_50 (CR3), Flapper_48 (CR1), Float294_46 (CR3), GTE5_35 (CR1), Kabluna_47 (CR2), Lollipop1437_49 (CR3), MerCougar_45 (CR2), NosilaM_47 (CR2), Outis_45 (CR2), Patio_47 (CR3), RedRaider_51 (CR3), Skysand_46 (CR3), StarStruck_45 (CR2), SteveFrench_31 (CS2), SuperSulley_45 (CR2),

Start 11:

- Found in 14 of 34 (41.2%) of genes in pham
- Manual Annotations of this start: 14 of 32
- Called 100.0% of time when present
- Phage (with cluster) where this start called: Aleemily_22 (DZ), Bantam_38 (DL), Benczkowski14_30 (CS4), Cafasso_23 (DZ), DatBoi_39 (DL), Katyusha_30 (CS4), Kvothe_30 (CS4), ModicumRichard_23 (DZ), Niagara_30 (CS4), ObLaDi_23 (DZ), SpeedDemon_400 (DL), Teatealatte_30 (CS4), Teech_30 (CS4), Tredge_30 (CS4),

Summary by clusters:

There are 8 clusters represented in this pham: CR2, CR3, DL, CR1, DD, DZ, CS4, CS2,

Info for manual annotations of cluster CR1:

- Start number 10 was manually annotated 1 time for cluster CR1.

Info for manual annotations of cluster CR2:

- Start number 10 was manually annotated 8 times for cluster CR2.

Info for manual annotations of cluster CR3:

- Start number 10 was manually annotated 6 times for cluster CR3.

Info for manual annotations of cluster CS2:

- Start number 10 was manually annotated 1 time for cluster CS2.

Info for manual annotations of cluster CS4:

- Start number 8 was manually annotated 2 times for cluster CS4.
- Start number 11 was manually annotated 7 times for cluster CS4.

Info for manual annotations of cluster DL:

- Start number 11 was manually annotated 3 times for cluster DL.

Info for manual annotations of cluster DZ:

- Start number 11 was manually annotated 4 times for cluster DZ.

Gene Information:

Gene: ASerpRocky_30 Start: 38766, Stop: 38996, Start Num: 8

Candidate Starts for ASerpRocky_30:

(Start: 8 @38766 has 2 MA's), (15, 38868), (23, 38958),

Gene: Aleemily_22 Start: 20882, Stop: 21043, Start Num: 11

Candidate Starts for Aleemily_22:

(Start: 11 @20882 has 14 MA's),

Gene: Bantam_38 Start: 34680, Stop: 34850, Start Num: 11

Candidate Starts for Bantam_38:

(Start: 11 @34680 has 14 MA's),

Gene: Benczkowski14_30 Start: 38816, Stop: 39034, Start Num: 11

Candidate Starts for Benczkowski14_30:

(Start: 11 @38816 has 14 MA's), (12, 38846), (16, 38933), (19, 38978), (20, 38984),

Gene: Bonum_47 Start: 35475, Stop: 35639, Start Num: 10

Candidate Starts for Bonum_47:

(5, 35385), (Start: 10 @35475 has 16 MA's), (14, 35526),

Gene: Buggaboo_45 Start: 35954, Stop: 36118, Start Num: 10

Candidate Starts for Buggaboo_45:

(5, 35864), (Start: 10 @35954 has 16 MA's), (12, 35987), (14, 36005),

Gene: Cafasso_23 Start: 21455, Stop: 21619, Start Num: 11

Candidate Starts for Cafasso_23:

(1, 21128), (2, 21131), (3, 21185), (Start: 11 @21455 has 14 MA's),

Gene: Cardigan_56 Start: 40897, Stop: 41073, Start Num: 9

Candidate Starts for Cardigan_56:

(9, 40897), (16, 41020), (18, 41053),

Gene: DatBoi_39 Start: 35338, Stop: 35508, Start Num: 11

Candidate Starts for DatBoi_39:

(2, 35017), (4, 35197), (Start: 11 @35338 has 14 MA's),

Gene: Demosthenes_30 Start: 38739, Stop: 38969, Start Num: 8

Candidate Starts for Demosthenes_30:

(Start: 8 @38739 has 2 MA's), (15, 38841), (23, 38931),

Gene: Ennea_50 Start: 36803, Stop: 36970, Start Num: 10

Candidate Starts for Ennea_50:

(5, 36713), (Start: 10 @36803 has 16 MA's), (14, 36854),

Gene: Flapper_48 Start: 36518, Stop: 36682, Start Num: 10

Candidate Starts for Flapper_48:

(5, 36428), (Start: 10 @36518 has 16 MA's), (14, 36569), (17, 36638),

Gene: Float294_46 Start: 36245, Stop: 36412, Start Num: 10

Candidate Starts for Float294_46:

(5, 36155), (Start: 10 @36245 has 16 MA's), (14, 36296),

Gene: GTE5_35 Start: 29375, Stop: 29539, Start Num: 10

Candidate Starts for GTE5_35:

(6, 29309), (7, 29315), (Start: 10 @29375 has 16 MA's),

Gene: Kabluna_47 Start: 34890, Stop: 35054, Start Num: 10

Candidate Starts for Kabluna_47:

(5, 34800), (Start: 10 @34890 has 16 MA's), (12, 34923),

Gene: Katyusha_30 Start: 38816, Stop: 39034, Start Num: 11

Candidate Starts for Katyusha_30:

(Start: 11 @38816 has 14 MA's), (12, 38846), (16, 38933), (19, 38978), (20, 38984),

Gene: Kvothe_30 Start: 38715, Stop: 38933, Start Num: 11

Candidate Starts for Kvothe_30:

(Start: 11 @38715 has 14 MA's), (12, 38745), (16, 38832), (19, 38877), (20, 38883),

Gene: Lollipop1437_49 Start: 36791, Stop: 36958, Start Num: 10

Candidate Starts for Lollipop1437_49:

(5, 36701), (Start: 10 @36791 has 16 MA's), (14, 36842),

Gene: MerCougar_45 Start: 36074, Stop: 36238, Start Num: 10

Candidate Starts for MerCougar_45:

(5, 35984), (Start: 10 @36074 has 16 MA's), (14, 36125),

Gene: ModicumRichard_23 Start: 21455, Stop: 21619, Start Num: 11

Candidate Starts for ModicumRichard_23:

(Start: 11 @21455 has 14 MA's),

Gene: Niagara_30 Start: 38773, Stop: 38991, Start Num: 11

Candidate Starts for Niagara_30:

(Start: 11 @38773 has 14 MA's), (12, 38803), (16, 38890), (19, 38935), (20, 38941),

Gene: NosilaM_47 Start: 35787, Stop: 35951, Start Num: 10

Candidate Starts for NosilaM_47:

(5, 35697), (Start: 10 @35787 has 16 MA's), (14, 35838),

Gene: ObLaDi_23 Start: 21434, Stop: 21595, Start Num: 11
Candidate Starts for ObLaDi_23:
(Start: 11 @21434 has 14 MA's),

Gene: Outis_45 Start: 35768, Stop: 35932, Start Num: 10
Candidate Starts for Outis_45:
(5, 35678), (Start: 10 @35768 has 16 MA's), (14, 35819),

Gene: Patio_47 Start: 36027, Stop: 36194, Start Num: 10
Candidate Starts for Patio_47:
(5, 35937), (Start: 10 @36027 has 16 MA's), (14, 36078),

Gene: RedRaider_51 Start: 38049, Stop: 38216, Start Num: 10
Candidate Starts for RedRaider_51:
(5, 37959), (Start: 10 @38049 has 16 MA's),

Gene: Skysand_46 Start: 36247, Stop: 36414, Start Num: 10
Candidate Starts for Skysand_46:
(5, 36157), (Start: 10 @36247 has 16 MA's), (14, 36298),

Gene: SpeedDemon_400 Start: 36457, Stop: 36627, Start Num: 11
Candidate Starts for SpeedDemon_400:
(2, 36136), (4, 36316), (Start: 11 @36457 has 14 MA's),

Gene: StarStruck_45 Start: 35768, Stop: 35932, Start Num: 10
Candidate Starts for StarStruck_45:
(5, 35678), (Start: 10 @35768 has 16 MA's), (14, 35819),

Gene: SteveFrench_31 Start: 37818, Stop: 38036, Start Num: 10
Candidate Starts for SteveFrench_31:
(Start: 10 @37818 has 16 MA's), (13, 37860), (16, 37935), (21, 37992), (22, 37998),

Gene: SuperSulley_45 Start: 35954, Stop: 36118, Start Num: 10
Candidate Starts for SuperSulley_45:
(5, 35864), (Start: 10 @35954 has 16 MA's), (12, 35987), (14, 36005),

Gene: Teatealatte_30 Start: 38718, Stop: 38936, Start Num: 11
Candidate Starts for Teatealatte_30:
(Start: 11 @38718 has 14 MA's), (12, 38748), (16, 38835), (19, 38880), (20, 38886),

Gene: Teech_30 Start: 38519, Stop: 38737, Start Num: 11
Candidate Starts for Teech_30:
(Start: 11 @38519 has 14 MA's), (16, 38636), (19, 38681), (20, 38687),

Gene: Tredge_30 Start: 38718, Stop: 38936, Start Num: 11
Candidate Starts for Tredge_30:
(Start: 11 @38718 has 14 MA's), (12, 38748), (16, 38835), (19, 38880), (20, 38886),