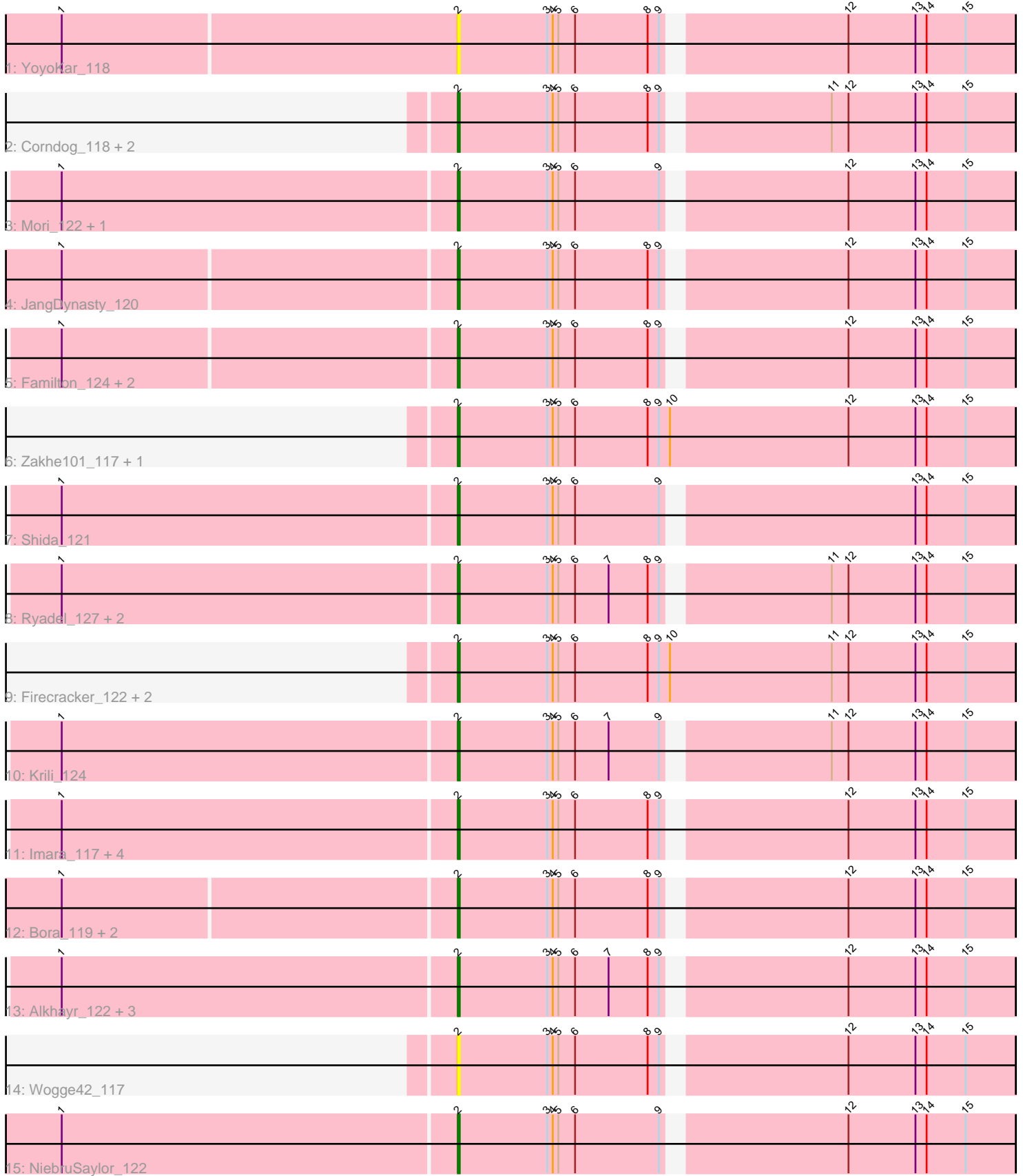


Pham 311835



Note: Tracks are now grouped by subcluster and scaled. Switching in subcluster is indicated by changes in track color. Track scale is now set by default to display the region 30 bp upstream of start 1 to 30 bp downstream of the last possible start. If this default region is judged to be packed too tightly with annotated starts, the track will be further scaled to only show that region of the ORF with annotated starts. This action will be indicated by adding "Zoomed" to the title. For starts, yellow indicates the location of called starts comprised solely of Glimmer/GeneMark auto-annotations, green indicates the location of called starts with at least 1 manual gene annotation.

## Pham 311835 Report

This analysis was run 06/27/26 on database version 652.

Pham number 311835 has 34 members, 3 are drafts.

Phages represented in each track:

- Track 1 : YoyoKar\_118
- Track 2 : Corndog\_118, YungJamal\_118, Smooch\_120
- Track 3 : Mori\_122, Vorrps\_122
- Track 4 : JangDynasty\_120
- Track 5 : Familton\_124, SchoolBus\_123, Zebo\_121
- Track 6 : Zakhe101\_117, Dylan\_116
- Track 7 : Shida\_121
- Track 8 : Ryadel\_127, Blessica\_121, MadKillah\_125
- Track 9 : Firecracker\_122, Wildflower\_117, Ashwin\_117
- Track 10 : Krili\_124
- Track 11 : Imara\_117, Vagabond\_121, Idergollasper\_126, Catdawg\_123, Murai\_122
- Track 12 : Bora\_119, TelAviv\_118, KingPhillip3\_120
- Track 13 : Alkhayr\_122, Winget\_122, FoulBall\_121, Schuy\_122
- Track 14 : Wogge42\_117
- Track 15 : NiebruSaylor\_122

### ***Summary of Final Annotations (See graph section above for start numbers):***

The start number called the most often in the published annotations is 2, it was called in 31 of the 31 non-draft genes in the pham.

Genes that call this "Most Annotated" start:

- Alkhayr\_122, Ashwin\_117, Blessica\_121, Bora\_119, Catdawg\_123, Corndog\_118, Dylan\_116, Familton\_124, Firecracker\_122, FoulBall\_121, Idergollasper\_126, Imara\_117, JangDynasty\_120, KingPhillip3\_120, Krili\_124, MadKillah\_125, Mori\_122, Murai\_122, NiebruSaylor\_122, Ryadel\_127, SchoolBus\_123, Schuy\_122, Shida\_121, Smooch\_120, TelAviv\_118, Vagabond\_121, Vorrps\_122, Wildflower\_117, Winget\_122, Wogge42\_117, YoyoKar\_118, YungJamal\_118, Zakhe101\_117, Zebo\_121,

Genes that have the "Most Annotated" start but do not call it:

- 

Genes that do not have the "Most Annotated" start:

•

### Summary by start number:

Start 2:

- Found in 34 of 34 ( 100.0% ) of genes in pham
- Manual Annotations of this start: 31 of 31
- Called 100.0% of time when present
- Phage (with cluster) where this start called: Alkhayr\_122 (O), Ashwin\_117 (O), Blessica\_121 (O), Bora\_119 (O), Catdawg\_123 (O), Corndog\_118 (O), Dylan\_116 (O), Familton\_124 (O), Firecracker\_122 (O), FoulBall\_121 (O), Idergollasper\_126 (O), Imara\_117 (O), JangDynasty\_120 (O), KingPhillip3\_120 (O), Krili\_124 (O), MadKillah\_125 (O), Mori\_122 (O), Murai\_122 (O), NiebruSaylor\_122 (O), Ryadel\_127 (O), SchoolBus\_123 (O), Schuy\_122 (O), Shida\_121 (O), Smooch\_120 (O), TelAviv\_118 (O), Vagabond\_121 (O), Vorrps\_122 (O), Wildflower\_117 (O), Winget\_122 (O), Wogge42\_117 (O), YoyoKar\_118 (O), YungJamal\_118 (O), Zakhe101\_117 (O), Zebo\_121 (O),

### Summary by clusters:

There is one cluster represented in this pham: O

Info for manual annotations of cluster O:

- Start number 2 was manually annotated 31 times for cluster O.

### Gene Information:

Gene: Alkhayr\_122 Start: 68144, Stop: 67857, Start Num: 2

Candidate Starts for Alkhayr\_122:

(1, 68354), (Start: 2 @68144 has 31 MA's), (3, 68096), (4, 68093), (5, 68090), (6, 68081), (7, 68063), (8, 68042), (9, 68036), (12, 67946), (13, 67910), (14, 67904), (15, 67883),

Gene: Ashwin\_117 Start: 67056, Stop: 66757, Start Num: 2

Candidate Starts for Ashwin\_117:

(Start: 2 @67056 has 31 MA's), (3, 67008), (4, 67005), (5, 67002), (6, 66993), (8, 66954), (9, 66948), (10, 66942), (11, 66855), (12, 66846), (13, 66810), (14, 66804), (15, 66783),

Gene: Blessica\_121 Start: 68810, Stop: 68523, Start Num: 2

Candidate Starts for Blessica\_121:

(1, 69020), (Start: 2 @68810 has 31 MA's), (3, 68762), (4, 68759), (5, 68756), (6, 68747), (7, 68729), (8, 68708), (9, 68702), (11, 68621), (12, 68612), (13, 68576), (14, 68570), (15, 68549),

Gene: Bora\_119 Start: 68828, Stop: 68541, Start Num: 2

Candidate Starts for Bora\_119:

(1, 69035), (Start: 2 @68828 has 31 MA's), (3, 68780), (4, 68777), (5, 68774), (6, 68765), (8, 68726), (9, 68720), (12, 68630), (13, 68594), (14, 68588), (15, 68567),

Gene: Catdawg\_123 Start: 69464, Stop: 69177, Start Num: 2

Candidate Starts for Catdawg\_123:

(1, 69674), (Start: 2 @69464 has 31 MA's), (3, 69416), (4, 69413), (5, 69410), (6, 69401), (8, 69362), (9, 69356), (12, 69266), (13, 69230), (14, 69224), (15, 69203),

Gene: Corndog\_118 Start: 67104, Stop: 66817, Start Num: 2

Candidate Starts for Corndog\_118:

(Start: 2 @67104 has 31 MA's), (3, 67056), (4, 67053), (5, 67050), (6, 67041), (8, 67002), (9, 66996), (11, 66915), (12, 66906), (13, 66870), (14, 66864), (15, 66843),

Gene: Dylan\_116 Start: 67157, Stop: 66858, Start Num: 2

Candidate Starts for Dylan\_116:

(Start: 2 @67157 has 31 MA's), (3, 67109), (4, 67106), (5, 67103), (6, 67094), (8, 67055), (9, 67049), (10, 67043), (12, 66947), (13, 66911), (14, 66905), (15, 66884),

Gene: Familton\_124 Start: 69183, Stop: 68896, Start Num: 2

Candidate Starts for Familton\_124:

(1, 69390), (Start: 2 @69183 has 31 MA's), (3, 69135), (4, 69132), (5, 69129), (6, 69120), (8, 69081), (9, 69075), (12, 68985), (13, 68949), (14, 68943), (15, 68922),

Gene: Firecracker\_122 Start: 68696, Stop: 68397, Start Num: 2

Candidate Starts for Firecracker\_122:

(Start: 2 @68696 has 31 MA's), (3, 68648), (4, 68645), (5, 68642), (6, 68633), (8, 68594), (9, 68588), (10, 68582), (11, 68495), (12, 68486), (13, 68450), (14, 68444), (15, 68423),

Gene: FoulBall\_121 Start: 68427, Stop: 68140, Start Num: 2

Candidate Starts for FoulBall\_121:

(1, 68637), (Start: 2 @68427 has 31 MA's), (3, 68379), (4, 68376), (5, 68373), (6, 68364), (7, 68346), (8, 68325), (9, 68319), (12, 68229), (13, 68193), (14, 68187), (15, 68166),

Gene: Idergollasper\_126 Start: 69870, Stop: 69583, Start Num: 2

Candidate Starts for Idergollasper\_126:

(1, 70080), (Start: 2 @69870 has 31 MA's), (3, 69822), (4, 69819), (5, 69816), (6, 69807), (8, 69768), (9, 69762), (12, 69672), (13, 69636), (14, 69630), (15, 69609),

Gene: Imara\_117 Start: 68177, Stop: 67890, Start Num: 2

Candidate Starts for Imara\_117:

(1, 68387), (Start: 2 @68177 has 31 MA's), (3, 68129), (4, 68126), (5, 68123), (6, 68114), (8, 68075), (9, 68069), (12, 67979), (13, 67943), (14, 67937), (15, 67916),

Gene: JangDynasty\_120 Start: 68232, Stop: 67945, Start Num: 2

Candidate Starts for JangDynasty\_120:

(1, 68439), (Start: 2 @68232 has 31 MA's), (3, 68184), (4, 68181), (5, 68178), (6, 68169), (8, 68130), (9, 68124), (12, 68034), (13, 67998), (14, 67992), (15, 67971),

Gene: KingPhillip3\_120 Start: 68739, Stop: 68452, Start Num: 2

Candidate Starts for KingPhillip3\_120:

(1, 68946), (Start: 2 @68739 has 31 MA's), (3, 68691), (4, 68688), (5, 68685), (6, 68676), (8, 68637), (9, 68631), (12, 68541), (13, 68505), (14, 68499), (15, 68478),

Gene: Krili\_124 Start: 69021, Stop: 68734, Start Num: 2

Candidate Starts for Krili\_124:

(1, 69231), (Start: 2 @69021 has 31 MA's), (3, 68973), (4, 68970), (5, 68967), (6, 68958), (7, 68940), (9, 68913), (11, 68832), (12, 68823), (13, 68787), (14, 68781), (15, 68760),

Gene: MadKillah\_125 Start: 68497, Stop: 68210, Start Num: 2

Candidate Starts for MadKillah\_125:

(1, 68707), (Start: 2 @68497 has 31 MA's), (3, 68449), (4, 68446), (5, 68443), (6, 68434), (7, 68416), (8, 68395), (9, 68389), (11, 68308), (12, 68299), (13, 68263), (14, 68257), (15, 68236),

Gene: Mori\_122 Start: 69047, Stop: 68760, Start Num: 2

Candidate Starts for Mori\_122:

(1, 69257), (Start: 2 @69047 has 31 MA's), (3, 68999), (4, 68996), (5, 68993), (6, 68984), (9, 68939), (12, 68849), (13, 68813), (14, 68807), (15, 68786),

Gene: Murai\_122 Start: 68865, Stop: 68578, Start Num: 2

Candidate Starts for Murai\_122:

(1, 69075), (Start: 2 @68865 has 31 MA's), (3, 68817), (4, 68814), (5, 68811), (6, 68802), (8, 68763), (9, 68757), (12, 68667), (13, 68631), (14, 68625), (15, 68604),

Gene: NiebruSaylor\_122 Start: 68161, Stop: 67874, Start Num: 2

Candidate Starts for NiebruSaylor\_122:

(1, 68371), (Start: 2 @68161 has 31 MA's), (3, 68113), (4, 68110), (5, 68107), (6, 68098), (9, 68053), (12, 67963), (13, 67927), (14, 67921), (15, 67900),

Gene: Ryadel\_127 Start: 70013, Stop: 69726, Start Num: 2

Candidate Starts for Ryadel\_127:

(1, 70223), (Start: 2 @70013 has 31 MA's), (3, 69965), (4, 69962), (5, 69959), (6, 69950), (7, 69932), (8, 69911), (9, 69905), (11, 69824), (12, 69815), (13, 69779), (14, 69773), (15, 69752),

Gene: SchoolBus\_123 Start: 69047, Stop: 68760, Start Num: 2

Candidate Starts for SchoolBus\_123:

(1, 69254), (Start: 2 @69047 has 31 MA's), (3, 68999), (4, 68996), (5, 68993), (6, 68984), (8, 68945), (9, 68939), (12, 68849), (13, 68813), (14, 68807), (15, 68786),

Gene: Schuy\_122 Start: 68206, Stop: 67919, Start Num: 2

Candidate Starts for Schuy\_122:

(1, 68416), (Start: 2 @68206 has 31 MA's), (3, 68158), (4, 68155), (5, 68152), (6, 68143), (7, 68125), (8, 68104), (9, 68098), (12, 68008), (13, 67972), (14, 67966), (15, 67945),

Gene: Shida\_121 Start: 68708, Stop: 68421, Start Num: 2

Candidate Starts for Shida\_121:

(1, 68918), (Start: 2 @68708 has 31 MA's), (3, 68660), (4, 68657), (5, 68654), (6, 68645), (9, 68600), (13, 68474), (14, 68468), (15, 68447),

Gene: Smooch\_120 Start: 68750, Stop: 68481, Start Num: 2

Candidate Starts for Smooch\_120:

(Start: 2 @68750 has 31 MA's), (3, 68702), (4, 68699), (5, 68696), (6, 68687), (8, 68648), (9, 68642), (11, 68561), (12, 68552), (13, 68516), (14, 68510), (15, 68489),

Gene: TelAviv\_118 Start: 68792, Stop: 68505, Start Num: 2

Candidate Starts for TelAviv\_118:

(1, 68999), (Start: 2 @68792 has 31 MA's), (3, 68744), (4, 68741), (5, 68738), (6, 68729), (8, 68690), (9, 68684), (12, 68594), (13, 68558), (14, 68552), (15, 68531),

Gene: Vagabond\_121 Start: 68207, Stop: 67920, Start Num: 2

Candidate Starts for Vagabond\_121:

(1, 68417), (Start: 2 @68207 has 31 MA's), (3, 68159), (4, 68156), (5, 68153), (6, 68144), (8, 68105), (9, 68099), (12, 68009), (13, 67973), (14, 67967), (15, 67946),

Gene: Vorrps\_122 Start: 69046, Stop: 68759, Start Num: 2

Candidate Starts for Vorrps\_122:

(1, 69256), (Start: 2 @69046 has 31 MA's), (3, 68998), (4, 68995), (5, 68992), (6, 68983), (9, 68938), (12, 68848), (13, 68812), (14, 68806), (15, 68785),

Gene: Wildflower\_117 Start: 66697, Stop: 66398, Start Num: 2

Candidate Starts for Wildflower\_117:

(Start: 2 @66697 has 31 MA's), (3, 66649), (4, 66646), (5, 66643), (6, 66634), (8, 66595), (9, 66589), (10, 66583), (11, 66496), (12, 66487), (13, 66451), (14, 66445), (15, 66424),

Gene: Winget\_122 Start: 68897, Stop: 68610, Start Num: 2

Candidate Starts for Winget\_122:

(1, 69107), (Start: 2 @68897 has 31 MA's), (3, 68849), (4, 68846), (5, 68843), (6, 68834), (7, 68816), (8, 68795), (9, 68789), (12, 68699), (13, 68663), (14, 68657), (15, 68636),

Gene: Wogge42\_117 Start: 68239, Stop: 67952, Start Num: 2

Candidate Starts for Wogge42\_117:

(Start: 2 @68239 has 31 MA's), (3, 68191), (4, 68188), (5, 68185), (6, 68176), (8, 68137), (9, 68131), (12, 68041), (13, 68005), (14, 67999), (15, 67978),

Gene: YoyoKar\_118 Start: 68255, Stop: 67968, Start Num: 2

Candidate Starts for YoyoKar\_118:

(1, 68465), (Start: 2 @68255 has 31 MA's), (3, 68207), (4, 68204), (5, 68201), (6, 68192), (8, 68153), (9, 68147), (12, 68057), (13, 68021), (14, 68015), (15, 67994),

Gene: YungJamal\_118 Start: 67548, Stop: 67261, Start Num: 2

Candidate Starts for YungJamal\_118:

(Start: 2 @67548 has 31 MA's), (3, 67500), (4, 67497), (5, 67494), (6, 67485), (8, 67446), (9, 67440), (11, 67359), (12, 67350), (13, 67314), (14, 67308), (15, 67287),

Gene: Zakhe101\_117 Start: 66996, Stop: 66697, Start Num: 2

Candidate Starts for Zakhe101\_117:

(Start: 2 @66996 has 31 MA's), (3, 66948), (4, 66945), (5, 66942), (6, 66933), (8, 66894), (9, 66888), (10, 66882), (12, 66786), (13, 66750), (14, 66744), (15, 66723),

Gene: Zebo\_121 Start: 68552, Stop: 68265, Start Num: 2

Candidate Starts for Zebo\_121:

(1, 68759), (Start: 2 @68552 has 31 MA's), (3, 68504), (4, 68501), (5, 68498), (6, 68489), (8, 68450), (9, 68444), (12, 68354), (13, 68318), (14, 68312), (15, 68291),