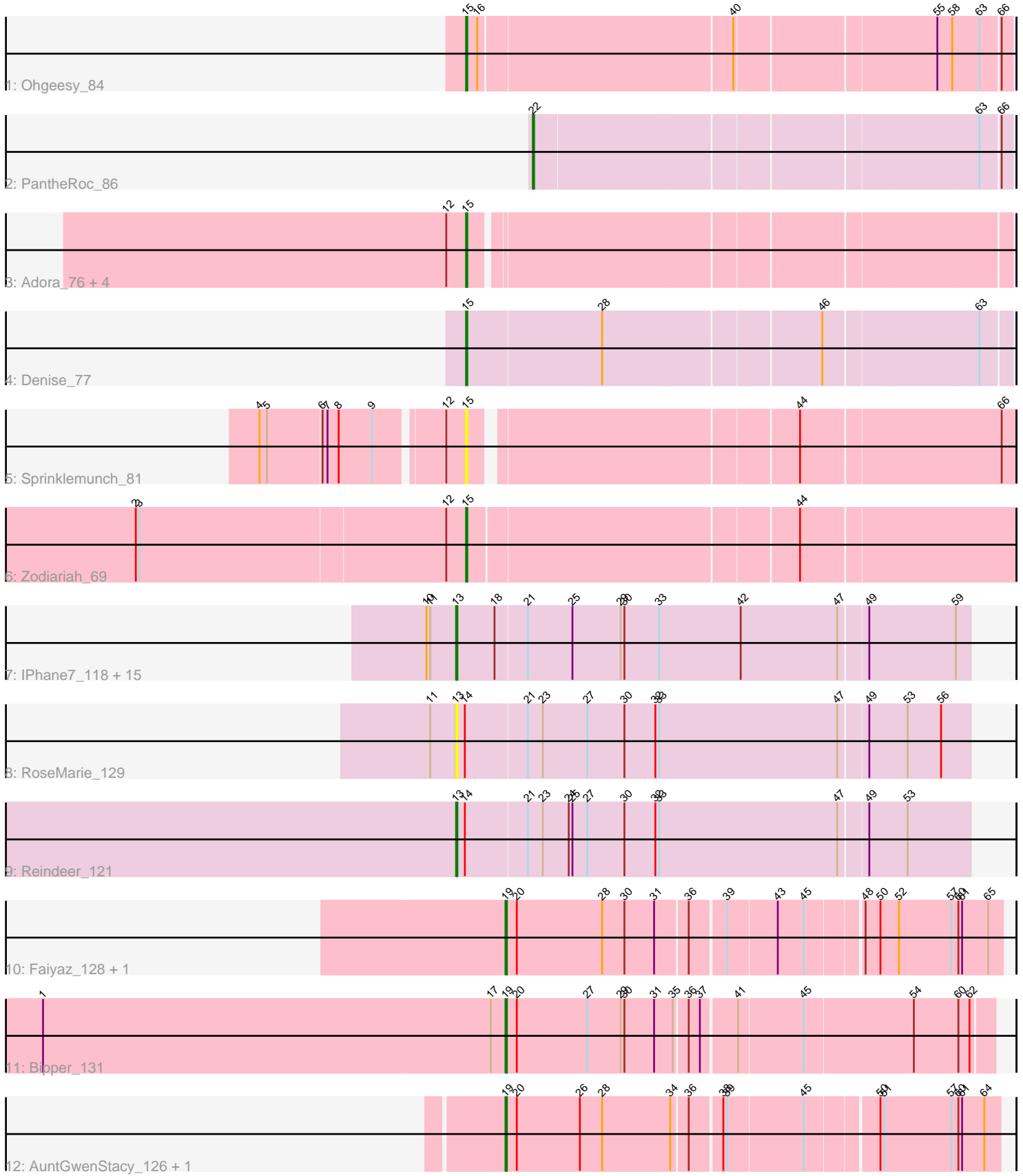


# Pham 311838



Note: Tracks are now grouped by subcluster and scaled. Switching in subcluster is indicated by changes in track color. Track scale is now set by default to display the region 30 bp upstream of start 1 to 30 bp downstream of the last possible start. If this default region is judged to be packed too tightly with annotated starts, the track will be further scaled to only show that region of the ORF with annotated starts. This action will be indicated by adding "Zoomed" to the title. For starts, yellow indicates the location of called starts comprised solely of Glimmer/GeneMark auto-annotations, green indicates the location of called starts with at least 1 manual gene annotation.

## Pham 311838 Report

This analysis was run 06/27/26 on database version 652.

Pham number 311838 has 33 members, 4 are drafts.

Phages represented in each track:

- Track 1 : Ohgeesy\_84
- Track 2 : PantheRoc\_86
- Track 3 : Adora\_76, Shlim410\_77, Twinkle\_78, Howe\_79, Hortense\_79
- Track 4 : Denise\_77
- Track 5 : Sprinklemunch\_81
- Track 6 : Zodiariah\_69
- Track 7 : IPhane7\_118, TyDawg\_115, KleverKiS\_123, Skinny\_126, Izel\_121, Bongo\_120, FreakyGoo\_121, Auspice\_120, Dulcita\_121, TpudiCK\_122, PegLeg\_124, Bricole\_122, Glaske16\_123, Diminimus\_121, SlimJimmy\_120, LilhomieP\_120
- Track 8 : RoseMarie\_129
- Track 9 : Reindeer\_121
- Track 10 : Faiyaz\_128, Hilltopfarm\_130
- Track 11 : Bipper\_131
- Track 12 : AuntGwenStacy\_126, Typha\_125

### ***Summary of Final Annotations (See graph section above for start numbers):***

The start number called the most often in the published annotations is 13, it was called in 15 of the 29 non-draft genes in the pham.

Genes that call this "Most Annotated" start:

- Auspice\_120, Bongo\_120, Bricole\_122, Diminimus\_121, Dulcita\_121, FreakyGoo\_121, Glaske16\_123, IPhane7\_118, Izel\_121, KleverKiS\_123, LilhomieP\_120, PegLeg\_124, Reindeer\_121, RoseMarie\_129, Skinny\_126, SlimJimmy\_120, TpudiCK\_122, TyDawg\_115,

Genes that have the "Most Annotated" start but do not call it:

- 

Genes that do not have the "Most Annotated" start:

- Adora\_76, AuntGwenStacy\_126, Bipper\_131, Denise\_77, Faiyaz\_128, Hilltopfarm\_130, Hortense\_79, Howe\_79, Ohgeesy\_84, PantheRoc\_86, Shlim410\_77, Sprinklemunch\_81, Twinkle\_78, Typha\_125, Zodiariah\_69,

## Summary by start number:

### Start 13:

- Found in 18 of 33 ( 54.5% ) of genes in pham
- Manual Annotations of this start: 15 of 29
- Called 100.0% of time when present
- Phage (with cluster) where this start called: Auspice\_120 (M1), Bongo\_120 (M1), Bricole\_122 (M1), Diminimus\_121 (M1), Dulcita\_121 (M1), FreakyGoo\_121 (M1), Glaske16\_123 (M1), IPhone7\_118 (M1), Izel\_121 (M1), KleverKiS\_123 (M1), LilhomieP\_120 (M1), PegLeg\_124 (M1), Reindeer\_121 (M1), RoseMarie\_129 (M1), Skinny\_126 (M1), SlimJimmy\_120 (M1), TpudiCK\_122 (M1), TyDawg\_115 (M1),

### Start 15:

- Found in 9 of 33 ( 27.3% ) of genes in pham
- Manual Annotations of this start: 8 of 29
- Called 100.0% of time when present
- Phage (with cluster) where this start called: Adora\_76 (CZ4), Denise\_77 (CZ5), Hortense\_79 (CZ4), Howe\_79 (CZ4), Ohgeesy\_84 (CZ), Shlim410\_77 (CZ4), Sprinklemunch\_81 (DW), Twinkle\_78 (CZ4), Zodiariah\_69 (DW),

### Start 19:

- Found in 5 of 33 ( 15.2% ) of genes in pham
- Manual Annotations of this start: 5 of 29
- Called 100.0% of time when present
- Phage (with cluster) where this start called: AuntGwenStacy\_126 (Y), Bipper\_131 (Y), Faiyaz\_128 (Y), Hilltopfarm\_130 (Y), Typha\_125 (Y),

### Start 22:

- Found in 1 of 33 ( 3.0% ) of genes in pham
- Manual Annotations of this start: 1 of 29
- Called 100.0% of time when present
- Phage (with cluster) where this start called: PantheRoc\_86 (CZ3),

## Summary by clusters:

There are 7 clusters represented in this pham: CZ3, CZ4, CZ5, CZ, M1, Y, DW,

### Info for manual annotations of cluster CZ:

- Start number 15 was manually annotated 1 time for cluster CZ.

### Info for manual annotations of cluster CZ3:

- Start number 22 was manually annotated 1 time for cluster CZ3.

### Info for manual annotations of cluster CZ4:

- Start number 15 was manually annotated 5 times for cluster CZ4.

### Info for manual annotations of cluster CZ5:

- Start number 15 was manually annotated 1 time for cluster CZ5.

### Info for manual annotations of cluster DW:

- Start number 15 was manually annotated 1 time for cluster DW.

Info for manual annotations of cluster M1:

•Start number 13 was manually annotated 15 times for cluster M1.

Info for manual annotations of cluster Y:

•Start number 19 was manually annotated 5 times for cluster Y.

### **Gene Information:**

Gene: Adora\_76 Start: 50971, Stop: 51381, Start Num: 15

Candidate Starts for Adora\_76:

(12, 50956), (Start: 15 @50971 has 8 MA's),

Gene: AuntGwenStacy\_126 Start: 73208, Stop: 73588, Start Num: 19

Candidate Starts for AuntGwenStacy\_126:

(Start: 19 @73208 has 5 MA's), (20, 73217), (26, 73268), (28, 73286), (34, 73340), (36, 73352), (38, 73376), (39, 73379), (45, 73439), (50, 73493), (51, 73496), (57, 73550), (60, 73556), (61, 73559), (64, 73577),

Gene: Auspice\_120 Start: 63814, Stop: 64218, Start Num: 13

Candidate Starts for Auspice\_120:

(10, 63790), (11, 63793), (Start: 13 @63814 has 15 MA's), (18, 63844), (21, 63868), (25, 63904), (29, 63943), (30, 63946), (33, 63973), (42, 64039), (47, 64117), (49, 64138), (59, 64207),

Gene: Bipper\_131 Start: 74914, Stop: 75294, Start Num: 19

Candidate Starts for Bipper\_131:

(1, 74542), (17, 74902), (Start: 19 @74914 has 5 MA's), (20, 74923), (27, 74980), (29, 75007), (30, 75010), (31, 75034), (35, 75049), (36, 75058), (37, 75067), (41, 75094), (45, 75145), (54, 75232), (60, 75268), (62, 75277),

Gene: Bongo\_120 Start: 63430, Stop: 63834, Start Num: 13

Candidate Starts for Bongo\_120:

(10, 63406), (11, 63409), (Start: 13 @63430 has 15 MA's), (18, 63460), (21, 63484), (25, 63520), (29, 63559), (30, 63562), (33, 63589), (42, 63655), (47, 63733), (49, 63754), (59, 63823),

Gene: Bricole\_122 Start: 63578, Stop: 63982, Start Num: 13

Candidate Starts for Bricole\_122:

(10, 63554), (11, 63557), (Start: 13 @63578 has 15 MA's), (18, 63608), (21, 63632), (25, 63668), (29, 63707), (30, 63710), (33, 63737), (42, 63803), (47, 63881), (49, 63902), (59, 63971),

Gene: Denise\_77 Start: 44257, Stop: 44676, Start Num: 15

Candidate Starts for Denise\_77:

(Start: 15 @44257 has 8 MA's), (28, 44365), (46, 44533), (63, 44653),

Gene: Diminimus\_121 Start: 63425, Stop: 63829, Start Num: 13

Candidate Starts for Diminimus\_121:

(10, 63401), (11, 63404), (Start: 13 @63425 has 15 MA's), (18, 63455), (21, 63479), (25, 63515), (29, 63554), (30, 63557), (33, 63584), (42, 63650), (47, 63728), (49, 63749), (59, 63818),

Gene: Dulcita\_121 Start: 63426, Stop: 63830, Start Num: 13

Candidate Starts for Dulcita\_121:

(10, 63402), (11, 63405), (Start: 13 @63426 has 15 MA's), (18, 63456), (21, 63480), (25, 63516), (29, 63555), (30, 63558), (33, 63585), (42, 63651), (47, 63729), (49, 63750), (59, 63819),

Gene: Faiyaz\_128 Start: 73350, Stop: 73733, Start Num: 19

Candidate Starts for Faiyaz\_128:

(Start: 19 @73350 has 5 MA's), (20, 73359), (28, 73428), (30, 73446), (31, 73470), (36, 73494), (39, 73521), (43, 73560), (45, 73581), (48, 73623), (50, 73635), (52, 73650), (57, 73692), (60, 73698), (61, 73701), (65, 73722),

Gene: FreakyGoo\_121 Start: 63910, Stop: 64314, Start Num: 13

Candidate Starts for FreakyGoo\_121:

(10, 63886), (11, 63889), (Start: 13 @63910 has 15 MA's), (18, 63940), (21, 63964), (25, 64000), (29, 64039), (30, 64042), (33, 64069), (42, 64135), (47, 64213), (49, 64234), (59, 64303),

Gene: Glaske16\_123 Start: 64543, Stop: 64947, Start Num: 13

Candidate Starts for Glaske16\_123:

(10, 64519), (11, 64522), (Start: 13 @64543 has 15 MA's), (18, 64573), (21, 64597), (25, 64633), (29, 64672), (30, 64675), (33, 64702), (42, 64768), (47, 64846), (49, 64867), (59, 64936),

Gene: Hilltopfarm\_130 Start: 74175, Stop: 74558, Start Num: 19

Candidate Starts for Hilltopfarm\_130:

(Start: 19 @74175 has 5 MA's), (20, 74184), (28, 74253), (30, 74271), (31, 74295), (36, 74319), (39, 74346), (43, 74385), (45, 74406), (48, 74448), (50, 74460), (52, 74475), (57, 74517), (60, 74523), (61, 74526), (65, 74547),

Gene: Hortense\_79 Start: 52326, Stop: 52736, Start Num: 15

Candidate Starts for Hortense\_79:

(12, 52311), (Start: 15 @52326 has 8 MA's),

Gene: Howe\_79 Start: 52326, Stop: 52736, Start Num: 15

Candidate Starts for Howe\_79:

(12, 52311), (Start: 15 @52326 has 8 MA's),

Gene: IPHane7\_118 Start: 63430, Stop: 63834, Start Num: 13

Candidate Starts for IPHane7\_118:

(10, 63406), (11, 63409), (Start: 13 @63430 has 15 MA's), (18, 63460), (21, 63484), (25, 63520), (29, 63559), (30, 63562), (33, 63589), (42, 63655), (47, 63733), (49, 63754), (59, 63823),

Gene: Izel\_121 Start: 63425, Stop: 63829, Start Num: 13

Candidate Starts for Izel\_121:

(10, 63401), (11, 63404), (Start: 13 @63425 has 15 MA's), (18, 63455), (21, 63479), (25, 63515), (29, 63554), (30, 63557), (33, 63584), (42, 63650), (47, 63728), (49, 63749), (59, 63818),

Gene: KleverKiS\_123 Start: 64915, Stop: 65319, Start Num: 13

Candidate Starts for KleverKiS\_123:

(10, 64891), (11, 64894), (Start: 13 @64915 has 15 MA's), (18, 64945), (21, 64969), (25, 65005), (29, 65044), (30, 65047), (33, 65074), (42, 65140), (47, 65218), (49, 65239), (59, 65308),

Gene: LilhomieP\_120 Start: 64708, Stop: 65112, Start Num: 13

Candidate Starts for LilhomieP\_120:

(10, 64684), (11, 64687), (Start: 13 @64708 has 15 MA's), (18, 64738), (21, 64762), (25, 64798), (29, 64837), (30, 64840), (33, 64867), (42, 64933), (47, 65011), (49, 65032), (59, 65101),

Gene: Ohgeesy\_84 Start: 52600, Stop: 53016, Start Num: 15

Candidate Starts for Ohgeesy\_84:

(Start: 15 @52600 has 8 MA's), (16, 52609), (40, 52807), (55, 52960), (58, 52972), (63, 52993), (66, 53008),

Gene: PantheRoc\_86 Start: 52720, Stop: 53085, Start Num: 22

Candidate Starts for PantheRoc\_86:

(Start: 22 @52720 has 1 MA's), (63, 53062), (66, 53077),

Gene: PegLeg\_124 Start: 64592, Stop: 64996, Start Num: 13

Candidate Starts for PegLeg\_124:

(10, 64568), (11, 64571), (Start: 13 @64592 has 15 MA's), (18, 64622), (21, 64646), (25, 64682), (29, 64721), (30, 64724), (33, 64751), (42, 64817), (47, 64895), (49, 64916), (59, 64985),

Gene: Reindeer\_121 Start: 64799, Stop: 65203, Start Num: 13

Candidate Starts for Reindeer\_121:

(Start: 13 @64799 has 15 MA's), (14, 64805), (21, 64853), (23, 64865), (24, 64886), (25, 64889), (27, 64901), (30, 64931), (32, 64955), (33, 64958), (47, 65102), (49, 65123), (53, 65153),

Gene: RoseMarie\_129 Start: 67303, Stop: 67707, Start Num: 13

Candidate Starts for RoseMarie\_129:

(11, 67282), (Start: 13 @67303 has 15 MA's), (14, 67309), (21, 67357), (23, 67369), (27, 67405), (30, 67435), (32, 67459), (33, 67462), (47, 67606), (49, 67627), (53, 67657), (56, 67684),

Gene: Shlim410\_77 Start: 52326, Stop: 52736, Start Num: 15

Candidate Starts for Shlim410\_77:

(12, 52311), (Start: 15 @52326 has 8 MA's),

Gene: Skinny\_126 Start: 65708, Stop: 66112, Start Num: 13

Candidate Starts for Skinny\_126:

(10, 65684), (11, 65687), (Start: 13 @65708 has 15 MA's), (18, 65738), (21, 65762), (25, 65798), (29, 65837), (30, 65840), (33, 65867), (42, 65933), (47, 66011), (49, 66032), (59, 66101),

Gene: SlimJimmy\_120 Start: 64417, Stop: 64821, Start Num: 13

Candidate Starts for SlimJimmy\_120:

(10, 64393), (11, 64396), (Start: 13 @64417 has 15 MA's), (18, 64447), (21, 64471), (25, 64507), (29, 64546), (30, 64549), (33, 64576), (42, 64642), (47, 64720), (49, 64741), (59, 64810),

Gene: Sprinklemunch\_81 Start: 50969, Stop: 51382, Start Num: 15

Candidate Starts for Sprinklemunch\_81:

(4, 50819), (5, 50825), (6, 50867), (7, 50870), (8, 50879), (9, 50906), (12, 50954), (Start: 15 @50969 has 8 MA's), (44, 51215), (66, 51371),

Gene: TpudiCK\_122 Start: 63430, Stop: 63834, Start Num: 13

Candidate Starts for TpudiCK\_122:

(10, 63406), (11, 63409), (Start: 13 @63430 has 15 MA's), (18, 63460), (21, 63484), (25, 63520), (29, 63559), (30, 63562), (33, 63589), (42, 63655), (47, 63733), (49, 63754), (59, 63823),

Gene: Twinkle\_78 Start: 53385, Stop: 53795, Start Num: 15

Candidate Starts for Twinkle\_78:

(12, 53370), (Start: 15 @53385 has 8 MA's),

Gene: TyDawg\_115 Start: 63433, Stop: 63837, Start Num: 13

Candidate Starts for TyDawg\_115:

(10, 63409), (11, 63412), (Start: 13 @63433 has 15 MA's), (18, 63463), (21, 63487), (25, 63523), (29, 63562), (30, 63565), (33, 63592), (42, 63658), (47, 63736), (49, 63757), (59, 63826),

Gene: Typha\_125 Start: 73209, Stop: 73589, Start Num: 19

Candidate Starts for Typha\_125:

(Start: 19 @73209 has 5 MA's), (20, 73218), (26, 73269), (28, 73287), (34, 73341), (36, 73353), (38, 73377), (39, 73380), (45, 73440), (50, 73494), (51, 73497), (57, 73551), (60, 73557), (61, 73560), (64, 73578),

Gene: Zodiariah\_69 Start: 50344, Stop: 50766, Start Num: 15

Candidate Starts for Zodiariah\_69:

(2, 50083), (3, 50086), (12, 50329), (Start: 15 @50344 has 8 MA's), (44, 50599),