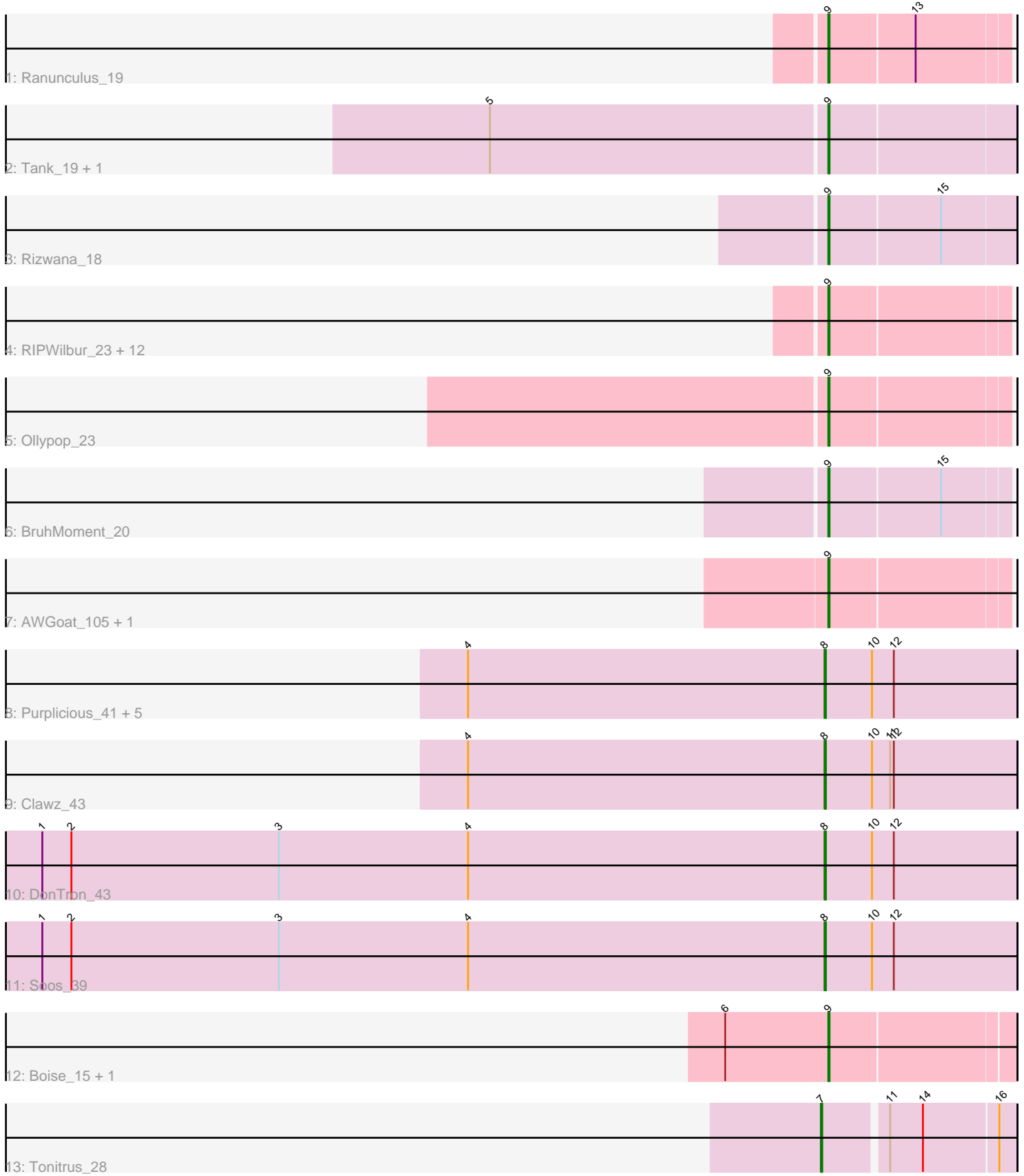


Pham 311839



Note: Tracks are now grouped by subcluster and scaled. Switching in subcluster is indicated by changes in track color. Track scale is now set by default to display the region 30 bp upstream of start 1 to 30 bp downstream of the last possible start. If this default region is judged to be packed too tightly with annotated starts, the track will be further scaled to only show that region of the ORF with annotated starts. This action will be indicated by adding "Zoomed" to the title. For starts, yellow indicates the location of called starts comprised solely of Glimmer/GeneMark auto-annotations, green indicates the location of called starts with at least 1 manual gene annotation.

## Pham 311839 Report

This analysis was run 06/27/26 on database version 652.

Pham number 311839 has 33 members, 7 are drafts.

Phages represented in each track:

- Track 1 : Ranunculus\_19
- Track 2 : Tank\_19, Wilde\_19
- Track 3 : Rizwana\_18
- Track 4 : RIPWilbur\_23, PhuzzTulsa\_23, BetaFish\_25, Odyssey395\_27, Kubulix\_26, Pureglobe5\_27, DogYard\_25, Beagle\_26, Pointis\_25, RazzB\_21, Hive\_25, Forrestell\_22, MellowYellow\_22
- Track 5 : Ollypop\_23
- Track 6 : BruhMoment\_20
- Track 7 : AWGoat\_105, SilentRX\_20
- Track 8 : Purplicious\_41, ColdSoup\_44, KingstonB\_41, Amo99\_44, Jollymon\_43, Sting\_42
- Track 9 : Clawz\_43
- Track 10 : DonTron\_43
- Track 11 : Soos\_39
- Track 12 : Boise\_15, RomansRevenge\_15
- Track 13 : Tonitrus\_28

### ***Summary of Final Annotations (See graph section above for start numbers):***

The start number called the most often in the published annotations is 9, it was called in 19 of the 26 non-draft genes in the pham.

Genes that call this "Most Annotated" start:

- AWGoat\_105, Beagle\_26, BetaFish\_25, Boise\_15, BruhMoment\_20, DogYard\_25, Forrestell\_22, Hive\_25, Kubulix\_26, MellowYellow\_22, Odyssey395\_27, Ollypop\_23, PhuzzTulsa\_23, Pointis\_25, Pureglobe5\_27, RIPWilbur\_23, Ranunculus\_19, RazzB\_21, Rizwana\_18, RomansRevenge\_15, SilentRX\_20, Tank\_19, Wilde\_19,

Genes that have the "Most Annotated" start but do not call it:

- 

Genes that do not have the "Most Annotated" start:

- Amo99\_44, Clawz\_43, ColdSoup\_44, DonTron\_43, Jollymon\_43, KingstonB\_41, Purplicious\_41, Soos\_39, Sting\_42, Tonitrus\_28,

## Summary by start number:

### Start 7:

- Found in 1 of 33 ( 3.0% ) of genes in pham
- Manual Annotations of this start: 1 of 26
- Called 100.0% of time when present
- Phage (with cluster) where this start called: Tonitrus\_28 (singleton),

### Start 8:

- Found in 9 of 33 ( 27.3% ) of genes in pham
- Manual Annotations of this start: 6 of 26
- Called 100.0% of time when present
- Phage (with cluster) where this start called: Amo99\_44 (CP), Clawz\_43 (CP), ColdSoup\_44 (CP), DonTron\_43 (CP), Jollymon\_43 (CP), KingstonB\_41 (CP), Purplicious\_41 (CP), Soos\_39 (CP), Sting\_42 (CP),

### Start 9:

- Found in 23 of 33 ( 69.7% ) of genes in pham
- Manual Annotations of this start: 19 of 26
- Called 100.0% of time when present
- Phage (with cluster) where this start called: AWGoat\_105 (AP4), Beagle\_26 (AP2), BetaFish\_25 (AP2), Boise\_15 (FT), BruhMoment\_20 (AP3), DogYard\_25 (AP2), Forrestell\_22 (AP2), Hive\_25 (AP2), Kubulix\_26 (AP2), MellowYellow\_22 (AP2), Odyssey395\_27 (AP2), Ollypop\_23 (AP2), PhuzzTulsa\_23 (AP2), Pointis\_25 (AP2), Pureglobe5\_27 (AP2), RIPWilbur\_23 (AP2), Ranunculus\_19 (AP), RazzB\_21 (AP2), Rizwana\_18 (AP1), RomansRevenge\_15 (FT), SilentRX\_20 (AP4), Tank\_19 (AP1), Wilde\_19 (AP1),

## Summary by clusters:

There are 8 clusters represented in this pham: singleton, FT, AP2, AP3, AP1, AP4, AP, CP,

### Info for manual annotations of cluster AP:

- Start number 9 was manually annotated 1 time for cluster AP.

### Info for manual annotations of cluster AP1:

- Start number 9 was manually annotated 3 times for cluster AP1.

### Info for manual annotations of cluster AP2:

- Start number 9 was manually annotated 11 times for cluster AP2.

### Info for manual annotations of cluster AP3:

- Start number 9 was manually annotated 1 time for cluster AP3.

### Info for manual annotations of cluster AP4:

- Start number 9 was manually annotated 2 times for cluster AP4.

### Info for manual annotations of cluster CP:

- Start number 8 was manually annotated 6 times for cluster CP.

### Info for manual annotations of cluster FT:

- Start number 9 was manually annotated 1 time for cluster FT.

**Gene Information:**

Gene: AWGoat\_105 Start: 13446, Stop: 13589, Start Num: 9  
Candidate Starts for AWGoat\_105:  
(Start: 9 @13446 has 19 MA's),

Gene: Amo99\_44 Start: 22933, Stop: 23091, Start Num: 8  
Candidate Starts for Amo99\_44:  
(4, 22639), (Start: 8 @22933 has 6 MA's), (10, 22972), (12, 22990),

Gene: Beagle\_26 Start: 13940, Stop: 14083, Start Num: 9  
Candidate Starts for Beagle\_26:  
(Start: 9 @13940 has 19 MA's),

Gene: BetaFish\_25 Start: 14143, Stop: 14286, Start Num: 9  
Candidate Starts for BetaFish\_25:  
(Start: 9 @14143 has 19 MA's),

Gene: Boise\_15 Start: 11151, Stop: 11297, Start Num: 9  
Candidate Starts for Boise\_15:  
(6, 11067), (Start: 9 @11151 has 19 MA's),

Gene: BruhMoment\_20 Start: 13342, Stop: 13485, Start Num: 9  
Candidate Starts for BruhMoment\_20:  
(Start: 9 @13342 has 19 MA's), (15, 13432),

Gene: Clawz\_43 Start: 22851, Stop: 23009, Start Num: 8  
Candidate Starts for Clawz\_43:  
(4, 22557), (Start: 8 @22851 has 6 MA's), (10, 22890), (11, 22905), (12, 22908),

Gene: ColdSoup\_44 Start: 22933, Stop: 23091, Start Num: 8  
Candidate Starts for ColdSoup\_44:  
(4, 22639), (Start: 8 @22933 has 6 MA's), (10, 22972), (12, 22990),

Gene: DogYard\_25 Start: 14010, Stop: 14153, Start Num: 9  
Candidate Starts for DogYard\_25:  
(Start: 9 @14010 has 19 MA's),

Gene: DonTron\_43 Start: 23003, Stop: 23161, Start Num: 8  
Candidate Starts for DonTron\_43:  
(1, 22358), (2, 22382), (3, 22553), (4, 22709), (Start: 8 @23003 has 6 MA's), (10, 23042), (12, 23060),

Gene: Forrestell\_22 Start: 12648, Stop: 12791, Start Num: 9  
Candidate Starts for Forrestell\_22:  
(Start: 9 @12648 has 19 MA's),

Gene: Hive\_25 Start: 14024, Stop: 14167, Start Num: 9  
Candidate Starts for Hive\_25:  
(Start: 9 @14024 has 19 MA's),

Gene: Jollymon\_43 Start: 22933, Stop: 23091, Start Num: 8  
Candidate Starts for Jollymon\_43:  
(4, 22639), (Start: 8 @22933 has 6 MA's), (10, 22972), (12, 22990),

Gene: KingstonB\_41 Start: 22441, Stop: 22599, Start Num: 8  
Candidate Starts for KingstonB\_41:  
(4, 22147), (Start: 8 @22441 has 6 MA's), (10, 22480), (12, 22498),

Gene: Kubulix\_26 Start: 14133, Stop: 14276, Start Num: 9  
Candidate Starts for Kubulix\_26:  
(Start: 9 @14133 has 19 MA's),

Gene: MellowYellow\_22 Start: 12675, Stop: 12818, Start Num: 9  
Candidate Starts for MellowYellow\_22:  
(Start: 9 @12675 has 19 MA's),

Gene: Odyssey395\_27 Start: 14135, Stop: 14278, Start Num: 9  
Candidate Starts for Odyssey395\_27:  
(Start: 9 @14135 has 19 MA's),

Gene: Ollypop\_23 Start: 13149, Stop: 13292, Start Num: 9  
Candidate Starts for Ollypop\_23:  
(Start: 9 @13149 has 19 MA's),

Gene: PhuzzTulsa\_23 Start: 13922, Stop: 14065, Start Num: 9  
Candidate Starts for PhuzzTulsa\_23:  
(Start: 9 @13922 has 19 MA's),

Gene: Pointis\_25 Start: 14139, Stop: 14282, Start Num: 9  
Candidate Starts for Pointis\_25:  
(Start: 9 @14139 has 19 MA's),

Gene: Pureglobe5\_27 Start: 14149, Stop: 14292, Start Num: 9  
Candidate Starts for Pureglobe5\_27:  
(Start: 9 @14149 has 19 MA's),

Gene: Purplicious\_41 Start: 22179, Stop: 22337, Start Num: 8  
Candidate Starts for Purplicious\_41:  
(4, 21885), (Start: 8 @22179 has 6 MA's), (10, 22218), (12, 22236),

Gene: RIPWilbur\_23 Start: 13285, Stop: 13428, Start Num: 9  
Candidate Starts for RIPWilbur\_23:  
(Start: 9 @13285 has 19 MA's),

Gene: Ranunculus\_19 Start: 13030, Stop: 13173, Start Num: 9  
Candidate Starts for Ranunculus\_19:  
(Start: 9 @13030 has 19 MA's), (13, 13099),

Gene: RazzB\_21 Start: 12448, Stop: 12591, Start Num: 9  
Candidate Starts for RazzB\_21:  
(Start: 9 @12448 has 19 MA's),

Gene: Rizwana\_18 Start: 12899, Stop: 13048, Start Num: 9  
Candidate Starts for Rizwana\_18:  
(Start: 9 @12899 has 19 MA's), (15, 12989),

Gene: RomansRevenge\_15 Start: 11151, Stop: 11297, Start Num: 9  
Candidate Starts for RomansRevenge\_15:  
(6, 11067), (Start: 9 @11151 has 19 MA's),

Gene: SilentRX\_20 Start: 13212, Stop: 13355, Start Num: 9  
Candidate Starts for SilentRX\_20:  
(Start: 9 @13212 has 19 MA's),

Gene: Soos\_39 Start: 22170, Stop: 22328, Start Num: 8  
Candidate Starts for Soos\_39:  
(1, 21525), (2, 21549), (3, 21720), (4, 21876), (Start: 8 @22170 has 6 MA's), (10, 22209), (12, 22227),

Gene: Sting\_42 Start: 22609, Stop: 22767, Start Num: 8  
Candidate Starts for Sting\_42:  
(4, 22315), (Start: 8 @22609 has 6 MA's), (10, 22648), (12, 22666),

Gene: Tank\_19 Start: 12761, Stop: 12910, Start Num: 9  
Candidate Starts for Tank\_19:  
(5, 12488), (Start: 9 @12761 has 19 MA's),

Gene: Tonitrus\_28 Start: 18735, Stop: 18884, Start Num: 7  
Candidate Starts for Tonitrus\_28:  
(Start: 7 @18735 has 1 MA's), (11, 18783), (14, 18810), (16, 18870),

Gene: Wilde\_19 Start: 12689, Stop: 12838, Start Num: 9  
Candidate Starts for Wilde\_19:  
(5, 12416), (Start: 9 @12689 has 19 MA's),