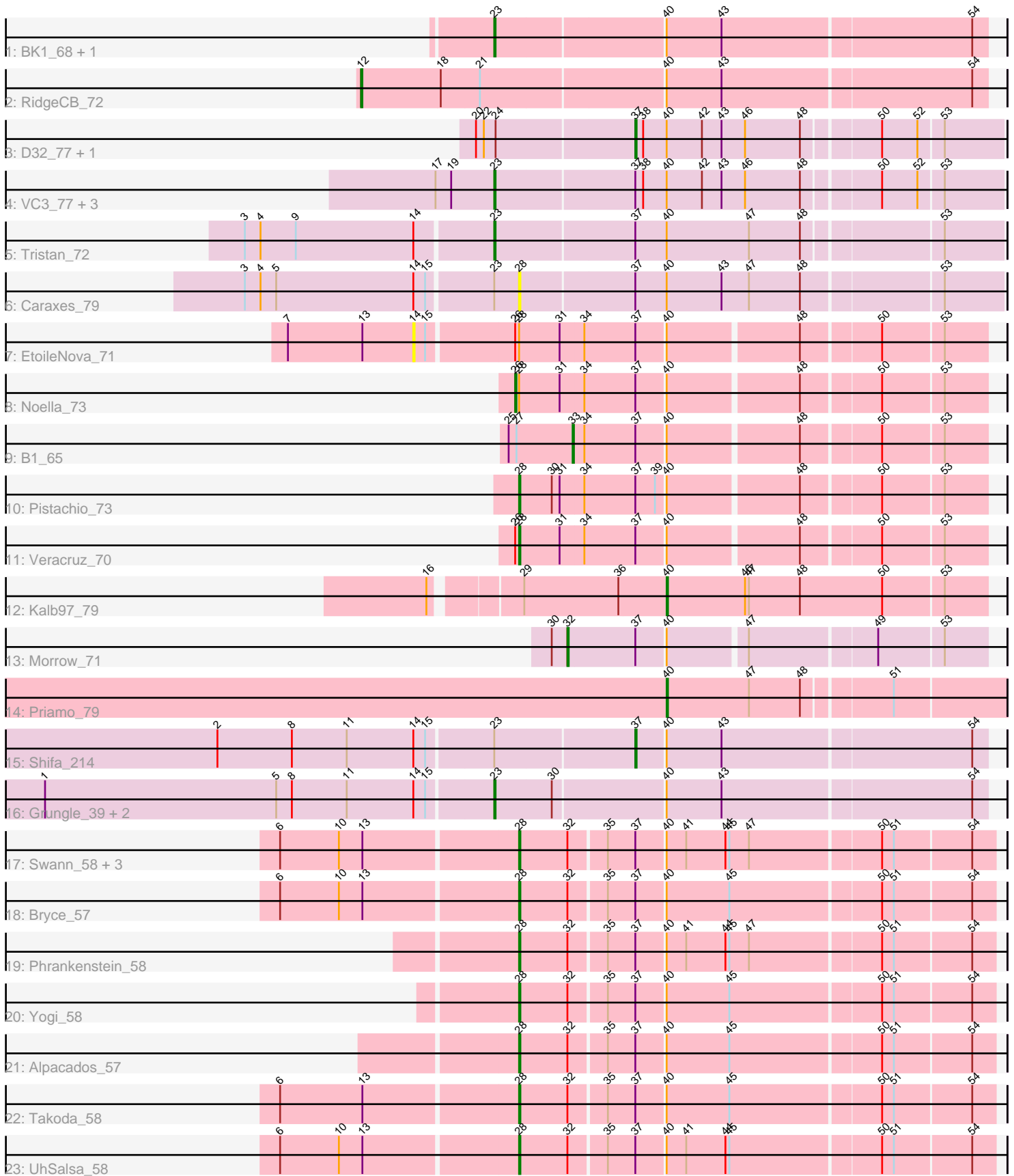


# Pham 311847



Note: Tracks are now grouped by subcluster and scaled. Switching in subcluster is indicated by changes in track color. Track scale is now set by default to display the region 30 bp upstream of start 1 to 30 bp downstream of the last possible start. If this default region is judged to be packed too tightly with annotated starts, the track will be further scaled to only show that region of the ORF with annotated starts. This action will be indicated by adding "Zoomed" to the title. For starts, yellow indicates the location of called starts comprised solely of Glimmer/GeneMark auto-annotations, green indicates the location of called starts with at least 1 manual gene annotation.

## Pham 311847 Report

This analysis was run 06/27/26 on database version 652.

Pham number 311847 has 33 members, 4 are drafts.

Phages represented in each track:

- Track 1 : BK1\_68, A6\_68
- Track 2 : RidgeCB\_72
- Track 3 : D32\_77, Naji\_78
- Track 4 : VC3\_77, AN9\_78, C3\_71, ANI8\_78
- Track 5 : Tristan\_72
- Track 6 : Caraxes\_79
- Track 7 : EtoileNova\_71
- Track 8 : Noella\_73
- Track 9 : B1\_65
- Track 10 : Pistachio\_73
- Track 11 : Veracruz\_70
- Track 12 : Kalb97\_79
- Track 13 : Morrow\_71
- Track 14 : Priamo\_79
- Track 15 : Shifa\_214
- Track 16 : Grungle\_39, Blackdragon\_43, Halldule\_42
- Track 17 : Swann\_58, Bradshaw\_58, Erik\_58, Rasputin\_58
- Track 18 : Bryce\_57
- Track 19 : Phrankenstein\_58
- Track 20 : Yogi\_58
- Track 21 : Alpacados\_57
- Track 22 : Takoda\_58
- Track 23 : UhSalsa\_58

### ***Summary of Final Annotations (See graph section above for start numbers):***

The start number called the most often in the published annotations is 28, it was called in 12 of the 29 non-draft genes in the pham.

Genes that call this "Most Annotated" start:

- Alpacados\_57, Bradshaw\_58, Bryce\_57, Caraxes\_79, Erik\_58, Phrankenstein\_58, Pistachio\_73, Rasputin\_58, Swann\_58, Takoda\_58, UhSalsa\_58, Veracruz\_70, Yogi\_58,

Genes that have the "Most Annotated" start but do not call it:

- EtoileNova\_71, Noella\_73,

Genes that do not have the "Most Annotated" start:

- A6\_68, AN9\_78, ANI8\_78, B1\_65, BK1\_68, Blackdragon\_43, C3\_71, D32\_77, Grungle\_39, Halldule\_42, Kalb97\_79, Morrow\_71, Naji\_78, Priamo\_79, RidgeCB\_72, Shifa\_214, Tristan\_72, VC3\_77,

### Summary by start number:

Start 12:

- Found in 1 of 33 ( 3.0% ) of genes in pham
- Manual Annotations of this start: 1 of 29
- Called 100.0% of time when present
- Phage (with cluster) where this start called: RidgeCB\_72 (A1),

Start 14:

- Found in 7 of 33 ( 21.2% ) of genes in pham
- No Manual Annotations of this start.
- Called 14.3% of time when present
- Phage (with cluster) where this start called: EtoileNova\_71 (A3),

Start 23:

- Found in 12 of 33 ( 36.4% ) of genes in pham
- Manual Annotations of this start: 8 of 29
- Called 83.3% of time when present
- Phage (with cluster) where this start called: A6\_68 (A1), AN9\_78 (A2), ANI8\_78 (A2), BK1\_68 (A1), Blackdragon\_43 (C1), C3\_71 (A2), Grungle\_39 (C1), Halldule\_42 (C1), Tristan\_72 (A2), VC3\_77 (A2),

Start 26:

- Found in 3 of 33 ( 9.1% ) of genes in pham
- Manual Annotations of this start: 1 of 29
- Called 33.3% of time when present
- Phage (with cluster) where this start called: Noella\_73 (A3),

Start 28:

- Found in 15 of 33 ( 45.5% ) of genes in pham
- Manual Annotations of this start: 12 of 29
- Called 86.7% of time when present
- Phage (with cluster) where this start called: Alpacados\_57 (CA), Bradshaw\_58 (CA), Bryce\_57 (CA), Caraxes\_79 (A2), Erik\_58 (CA), Phrankenstein\_58 (CA), Pistachio\_73 (A3), Rasputin\_58 (CA), Swann\_58 (CA), Takoda\_58 (CA), UhSalsa\_58 (CA), Veracruz\_70 (A3), Yogi\_58 (CA),

Start 32:

- Found in 11 of 33 ( 33.3% ) of genes in pham
- Manual Annotations of this start: 1 of 29
- Called 9.1% of time when present
- Phage (with cluster) where this start called: Morrow\_71 (A4),

Start 33:

- Found in 1 of 33 ( 3.0% ) of genes in pham

- Manual Annotations of this start: 1 of 29
- Called 100.0% of time when present
- Phage (with cluster) where this start called: B1\_65 (A3),

Start 37:

- Found in 25 of 33 ( 75.8% ) of genes in pham
- Manual Annotations of this start: 3 of 29
- Called 12.0% of time when present
- Phage (with cluster) where this start called: D32\_77 (A2), Naji\_78 (A2), Shifa\_214 (C1),

Start 40:

- Found in 33 of 33 ( 100.0% ) of genes in pham
- Manual Annotations of this start: 2 of 29
- Called 6.1% of time when present
- Phage (with cluster) where this start called: Kalb97\_79 (A3), Priamo\_79 (A6),

### **Summary by clusters:**

There are 7 clusters represented in this pham: CA, A1, A3, A2, A4, A6, C1,

Info for manual annotations of cluster A1:

- Start number 12 was manually annotated 1 time for cluster A1.
- Start number 23 was manually annotated 2 times for cluster A1.

Info for manual annotations of cluster A2:

- Start number 23 was manually annotated 5 times for cluster A2.
- Start number 37 was manually annotated 2 times for cluster A2.

Info for manual annotations of cluster A3:

- Start number 26 was manually annotated 1 time for cluster A3.
- Start number 28 was manually annotated 2 times for cluster A3.
- Start number 33 was manually annotated 1 time for cluster A3.
- Start number 40 was manually annotated 1 time for cluster A3.

Info for manual annotations of cluster A4:

- Start number 32 was manually annotated 1 time for cluster A4.

Info for manual annotations of cluster A6:

- Start number 40 was manually annotated 1 time for cluster A6.

Info for manual annotations of cluster C1:

- Start number 23 was manually annotated 1 time for cluster C1.
- Start number 37 was manually annotated 1 time for cluster C1.

Info for manual annotations of cluster CA:

- Start number 28 was manually annotated 10 times for cluster CA.

### **Gene Information:**

Gene: A6\_68 Start: 43794, Stop: 43432, Start Num: 23

Candidate Starts for A6\_68:

(Start: 23 @43794 has 8 MA's), (Start: 40 @43671 has 2 MA's), (43, 43629), (54, 43443),

Gene: AN9\_78 Start: 45224, Stop: 44853, Start Num: 23

Candidate Starts for AN9\_78:

(17, 45269), (19, 45257), (Start: 23 @45224 has 8 MA's), (Start: 37 @45122 has 3 MA's), (38, 45116), (Start: 40 @45098 has 2 MA's), (42, 45071), (43, 45056), (46, 45038), (48, 44996), (50, 44942), (52, 44915), (53, 44897),

Gene: ANI8\_78 Start: 45224, Stop: 44853, Start Num: 23

Candidate Starts for ANI8\_78:

(17, 45269), (19, 45257), (Start: 23 @45224 has 8 MA's), (Start: 37 @45122 has 3 MA's), (38, 45116), (Start: 40 @45098 has 2 MA's), (42, 45071), (43, 45056), (46, 45038), (48, 44996), (50, 44942), (52, 44915), (53, 44897),

Gene: Alpacados\_57 Start: 39918, Stop: 39571, Start Num: 28

Candidate Starts for Alpacados\_57:

(Start: 28 @39918 has 12 MA's), (Start: 32 @39882 has 1 MA's), (35, 39855), (Start: 37 @39834 has 3 MA's), (Start: 40 @39813 has 2 MA's), (45, 39765), (50, 39654), (51, 39645), (54, 39588),

Gene: B1\_65 Start: 42656, Stop: 42357, Start Num: 33

Candidate Starts for B1\_65:

(25, 42704), (27, 42698), (Start: 33 @42656 has 1 MA's), (34, 42647), (Start: 37 @42608 has 3 MA's), (Start: 40 @42587 has 2 MA's), (48, 42491), (50, 42434), (53, 42389),

Gene: BK1\_68 Start: 43794, Stop: 43432, Start Num: 23

Candidate Starts for BK1\_68:

(Start: 23 @43794 has 8 MA's), (Start: 40 @43671 has 2 MA's), (43, 43629), (54, 43443),

Gene: Blackdragon\_43 Start: 14520, Stop: 14882, Start Num: 23

Candidate Starts for Blackdragon\_43:

(1, 14181), (5, 14358), (8, 14370), (11, 14412), (14, 14463), (15, 14472), (Start: 23 @14520 has 8 MA's), (30, 14562), (Start: 40 @14643 has 2 MA's), (43, 14685), (54, 14871),

Gene: Bradshaw\_58 Start: 39958, Stop: 39611, Start Num: 28

Candidate Starts for Bradshaw\_58:

(6, 40135), (10, 40090), (13, 40072), (Start: 28 @39958 has 12 MA's), (Start: 32 @39922 has 1 MA's), (35, 39895), (Start: 37 @39874 has 3 MA's), (Start: 40 @39853 has 2 MA's), (41, 39838), (44, 39808), (45, 39805), (47, 39790), (50, 39694), (51, 39685), (54, 39628),

Gene: Bryce\_57 Start: 39703, Stop: 39356, Start Num: 28

Candidate Starts for Bryce\_57:

(6, 39880), (10, 39835), (13, 39817), (Start: 28 @39703 has 12 MA's), (Start: 32 @39667 has 1 MA's), (35, 39640), (Start: 37 @39619 has 3 MA's), (Start: 40 @39598 has 2 MA's), (45, 39550), (50, 39439), (51, 39430), (54, 39373),

Gene: C3\_71 Start: 45224, Stop: 44853, Start Num: 23

Candidate Starts for C3\_71:

(17, 45269), (19, 45257), (Start: 23 @45224 has 8 MA's), (Start: 37 @45122 has 3 MA's), (38, 45116), (Start: 40 @45098 has 2 MA's), (42, 45071), (43, 45056), (46, 45038), (48, 44996), (50, 44942), (52, 44915), (53, 44897),

Gene: Caraxes\_79 Start: 44850, Stop: 44494, Start Num: 28

Candidate Starts for Caraxes\_79:

(3, 45054), (4, 45042), (5, 45030), (14, 44925), (15, 44916), (Start: 23 @44868 has 8 MA's), (Start: 28 @44850 has 12 MA's), (Start: 37 @44766 has 3 MA's), (Start: 40 @44742 has 2 MA's), (43, 44700), (47, 44679), (48, 44640), (53, 44538),

Gene: D32\_77 Start: 45602, Stop: 45333, Start Num: 37

Candidate Starts for D32\_77:

(20, 45719), (22, 45713), (24, 45704), (Start: 37 @45602 has 3 MA's), (38, 45596), (Start: 40 @45578 has 2 MA's), (42, 45551), (43, 45536), (46, 45518), (48, 45476), (50, 45422), (52, 45395), (53, 45377),

Gene: Erik\_58 Start: 39881, Stop: 39534, Start Num: 28

Candidate Starts for Erik\_58:

(6, 40058), (10, 40013), (13, 39995), (Start: 28 @39881 has 12 MA's), (Start: 32 @39845 has 1 MA's), (35, 39818), (Start: 37 @39797 has 3 MA's), (Start: 40 @39776 has 2 MA's), (41, 39761), (44, 39731), (45, 39728), (47, 39713), (50, 39617), (51, 39608), (54, 39551),

Gene: EtoileNova\_71 Start: 44555, Stop: 44142, Start Num: 14

Candidate Starts for EtoileNova\_71:

(7, 44651), (13, 44594), (14, 44555), (15, 44546), (Start: 26 @44483 has 1 MA's), (Start: 28 @44480 has 12 MA's), (31, 44450), (34, 44432), (Start: 37 @44393 has 3 MA's), (Start: 40 @44372 has 2 MA's), (48, 44276), (50, 44219), (53, 44174),

Gene: Grungle\_39 Start: 13010, Stop: 13372, Start Num: 23

Candidate Starts for Grungle\_39:

(1, 12671), (5, 12848), (8, 12860), (11, 12902), (14, 12953), (15, 12962), (Start: 23 @13010 has 8 MA's), (30, 13052), (Start: 40 @13133 has 2 MA's), (43, 13175), (54, 13361),

Gene: Halldule\_42 Start: 13459, Stop: 13821, Start Num: 23

Candidate Starts for Halldule\_42:

(1, 13120), (5, 13297), (8, 13309), (11, 13351), (14, 13402), (15, 13411), (Start: 23 @13459 has 8 MA's), (30, 13501), (Start: 40 @13582 has 2 MA's), (43, 13624), (54, 13810),

Gene: Kalb97\_79 Start: 44548, Stop: 44306, Start Num: 40

Candidate Starts for Kalb97\_79:

(16, 44716), (29, 44656), (36, 44584), (Start: 40 @44548 has 2 MA's), (46, 44488), (47, 44485), (48, 44446), (50, 44383), (53, 44338),

Gene: Morrow\_71 Start: 44003, Stop: 43701, Start Num: 32

Candidate Starts for Morrow\_71:

(30, 44015), (Start: 32 @44003 has 1 MA's), (Start: 37 @43952 has 3 MA's), (Start: 40 @43931 has 2 MA's), (47, 43874), (49, 43781), (53, 43733),

Gene: Naji\_78 Start: 45602, Stop: 45333, Start Num: 37

Candidate Starts for Naji\_78:

(20, 45719), (22, 45713), (24, 45704), (Start: 37 @45602 has 3 MA's), (38, 45596), (Start: 40 @45578 has 2 MA's), (42, 45551), (43, 45536), (46, 45518), (48, 45476), (50, 45422), (52, 45395), (53, 45377),

Gene: Noella\_73 Start: 44480, Stop: 44139, Start Num: 26

Candidate Starts for Noella\_73:

(Start: 26 @44480 has 1 MA's), (Start: 28 @44477 has 12 MA's), (31, 44447), (34, 44429), (Start: 37 @44390 has 3 MA's), (Start: 40 @44369 has 2 MA's), (48, 44273), (50, 44216), (53, 44171),

Gene: Phrankenstein\_58 Start: 39895, Stop: 39548, Start Num: 28

Candidate Starts for Phrankenstein\_58:

(Start: 28 @39895 has 12 MA's), (Start: 32 @39859 has 1 MA's), (35, 39832), (Start: 37 @39811 has 3 MA's), (Start: 40 @39790 has 2 MA's), (41, 39775), (44, 39745), (45, 39742), (47, 39727), (50, 39631), (51, 39622), (54, 39565),

Gene: Pistachio\_73 Start: 44065, Stop: 43727, Start Num: 28

Candidate Starts for Pistachio\_73:

(Start: 28 @44065 has 12 MA's), (30, 44041), (31, 44035), (34, 44017), (Start: 37 @43978 has 3 MA's), (39, 43963), (Start: 40 @43957 has 2 MA's), (48, 43861), (50, 43804), (53, 43759),

Gene: Priamo\_79 Start: 44200, Stop: 43952, Start Num: 40

Candidate Starts for Priamo\_79:

(Start: 40 @44200 has 2 MA's), (47, 44137), (48, 44098), (51, 44035),

Gene: Rasputin\_58 Start: 39919, Stop: 39572, Start Num: 28

Candidate Starts for Rasputin\_58:

(6, 40096), (10, 40051), (13, 40033), (Start: 28 @39919 has 12 MA's), (Start: 32 @39883 has 1 MA's), (35, 39856), (Start: 37 @39835 has 3 MA's), (Start: 40 @39814 has 2 MA's), (41, 39799), (44, 39769), (45, 39766), (47, 39751), (50, 39655), (51, 39646), (54, 39589),

Gene: RidgeCB\_72 Start: 45253, Stop: 44792, Start Num: 12

Candidate Starts for RidgeCB\_72:

(Start: 12 @45253 has 1 MA's), (18, 45193), (21, 45166), (Start: 40 @45031 has 2 MA's), (43, 44989), (54, 44803),

Gene: Shifa\_214 Start: 131617, Stop: 131877, Start Num: 37

Candidate Starts for Shifa\_214:

(2, 131308), (8, 131365), (11, 131407), (14, 131458), (15, 131467), (Start: 23 @131515 has 8 MA's), (Start: 37 @131617 has 3 MA's), (Start: 40 @131638 has 2 MA's), (43, 131680), (54, 131866),

Gene: Swann\_58 Start: 39947, Stop: 39600, Start Num: 28

Candidate Starts for Swann\_58:

(6, 40124), (10, 40079), (13, 40061), (Start: 28 @39947 has 12 MA's), (Start: 32 @39911 has 1 MA's), (35, 39884), (Start: 37 @39863 has 3 MA's), (Start: 40 @39842 has 2 MA's), (41, 39827), (44, 39797), (45, 39794), (47, 39779), (50, 39683), (51, 39674), (54, 39617),

Gene: Takoda\_58 Start: 40134, Stop: 39787, Start Num: 28

Candidate Starts for Takoda\_58:

(6, 40311), (13, 40248), (Start: 28 @40134 has 12 MA's), (Start: 32 @40098 has 1 MA's), (35, 40071), (Start: 37 @40050 has 3 MA's), (Start: 40 @40029 has 2 MA's), (45, 39981), (50, 39870), (51, 39861), (54, 39804),

Gene: Tristan\_72 Start: 46243, Stop: 45872, Start Num: 23

Candidate Starts for Tristan\_72:

(3, 46429), (4, 46417), (9, 46390), (14, 46300), (Start: 23 @46243 has 8 MA's), (Start: 37 @46141 has 3 MA's), (Start: 40 @46117 has 2 MA's), (47, 46054), (48, 46015), (53, 45916),

Gene: UhSalsa\_58 Start: 39888, Stop: 39541, Start Num: 28

Candidate Starts for UhSalsa\_58:

(6, 40065), (10, 40020), (13, 40002), (Start: 28 @39888 has 12 MA's), (Start: 32 @39852 has 1 MA's), (35, 39825), (Start: 37 @39804 has 3 MA's), (Start: 40 @39783 has 2 MA's), (41, 39768), (44, 39738), (45, 39735), (50, 39624), (51, 39615), (54, 39558),

Gene: VC3\_77 Start: 45224, Stop: 44853, Start Num: 23

Candidate Starts for VC3\_77:

(17, 45269), (19, 45257), (Start: 23 @45224 has 8 MA's), (Start: 37 @45122 has 3 MA's), (38, 45116), (Start: 40 @45098 has 2 MA's), (42, 45071), (43, 45056), (46, 45038), (48, 44996), (50, 44942), (52, 44915), (53, 44897),

Gene: Veracruz\_70 Start: 44476, Stop: 44138, Start Num: 28

Candidate Starts for Veracruz\_70:

(Start: 26 @44479 has 1 MA's), (Start: 28 @44476 has 12 MA's), (31, 44446), (34, 44428), (Start: 37 @44389 has 3 MA's), (Start: 40 @44368 has 2 MA's), (48, 44272), (50, 44215), (53, 44170),

Gene: Yogi\_58 Start: 40300, Stop: 39953, Start Num: 28

Candidate Starts for Yogi\_58:

(Start: 28 @40300 has 12 MA's), (Start: 32 @40264 has 1 MA's), (35, 40237), (Start: 37 @40216 has 3 MA's), (Start: 40 @40195 has 2 MA's), (45, 40147), (50, 40036), (51, 40027), (54, 39970),