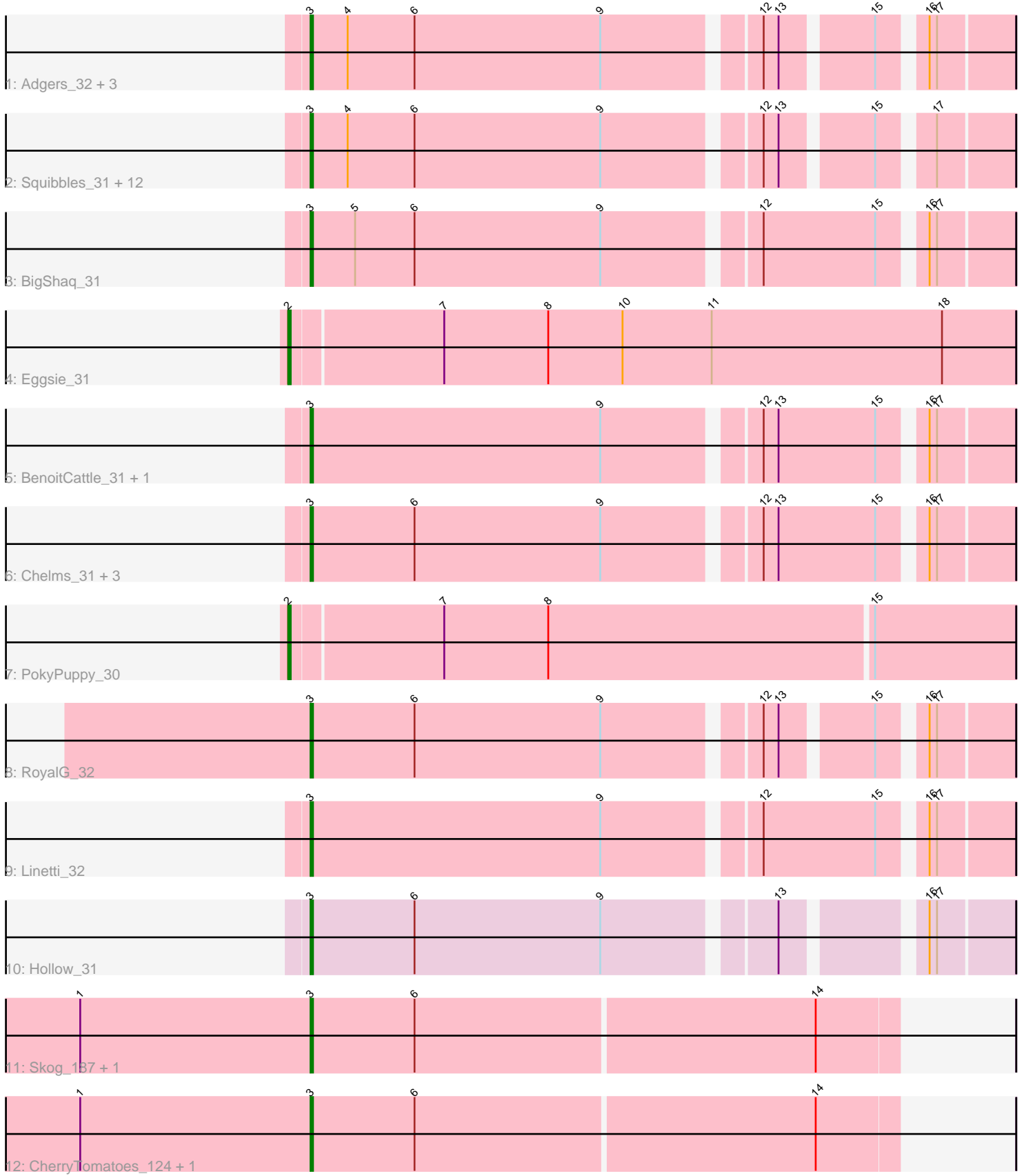


Pham 311849



Note: Tracks are now grouped by subcluster and scaled. Switching in subcluster is indicated by changes in track color. Track scale is now set by default to display the region 30 bp upstream of start 1 to 30 bp downstream of the last possible start. If this default region is judged to be packed too tightly with annotated starts, the track will be further scaled to only show that region of the ORF with annotated starts. This action will be indicated by adding "Zoomed" to the title. For starts, yellow indicates the location of called starts comprised solely of Glimmer/GeneMark auto-annotations, green indicates the location of called starts with at least 1 manual gene annotation.

Pham 311849 Report

This analysis was run 06/27/26 on database version 652.

Pham number 311849 has 33 members, 3 are drafts.

Phages represented in each track:

- Track 1 : Adgers_32, CathyBurgh_31, Barbochs_31, Lizzo_31
- Track 2 : Squibbles_31, Flakey_31, Exiguo_31, RemRem_32, Sam12_31, Breezic_31, Hotorobo_31, Monty_30, Gorko_31, Kelzog_31, Ekhein_31, Worcestershire_31, GourdThymes_31
- Track 3 : BigShaq_31
- Track 4 : Eggsie_31
- Track 5 : BenoitCattle_31, Crete_32
- Track 6 : Chelms_31, Sombrero_31, PierreThree_31, Dakiti_31
- Track 7 : PokyPuppy_30
- Track 8 : RoyalG_32
- Track 9 : Linetti_32
- Track 10 : Hollow_31
- Track 11 : Skog_187, Pupper_125
- Track 12 : CherryTomatoes_124, SCentae_124

Summary of Final Annotations (See graph section above for start numbers):

The start number called the most often in the published annotations is 3, it was called in 28 of the 30 non-draft genes in the pham.

Genes that call this "Most Annotated" start:

- Adgers_32, Barbochs_31, BenoitCattle_31, BigShaq_31, Breezic_31, CathyBurgh_31, Chelms_31, CherryTomatoes_124, Crete_32, Dakiti_31, Ekhein_31, Exiguo_31, Flakey_31, Gorko_31, GourdThymes_31, Hollow_31, Hotorobo_31, Kelzog_31, Linetti_32, Lizzo_31, Monty_30, PierreThree_31, Pupper_125, RemRem_32, RoyalG_32, SCentae_124, Sam12_31, Skog_187, Sombrero_31, Squibbles_31, Worcestershire_31,

Genes that have the "Most Annotated" start but do not call it:

-

Genes that do not have the "Most Annotated" start:

- Eggsie_31, PokyPuppy_30,

Summary by start number:

Start 2:

- Found in 2 of 33 (6.1%) of genes in pham
- Manual Annotations of this start: 2 of 30
- Called 100.0% of time when present
- Phage (with cluster) where this start called: Eggsie_31 (CS2), PokyPuppy_30 (CS2),

Start 3:

- Found in 31 of 33 (93.9%) of genes in pham
- Manual Annotations of this start: 28 of 30
- Called 100.0% of time when present
- Phage (with cluster) where this start called: Adgers_32 (CS2), Barbochs_31 (CS2), BenoitCattle_31 (CS2), BigShaq_31 (CS2), Breezic_31 (CS2), CathyBurgh_31 (CS2), Chelms_31 (CS2), CherryTomatoes_124 (DO), Crete_32 (CS2), Dakiti_31 (CS2), Ekhein_31 (CS2), Exiguo_31 (CS2), Flakey_31 (CS2), Gorko_31 (CS2), GourdThymes_31 (CS2), Hollow_31 (CS4), Hotorobo_31 (CS2), Kelzog_31 (CS2), Linetti_32 (CS2), Lizzo_31 (CS2), Monty_30 (CS2), PierreThree_31 (CS2), Pupper_125 (DO), RemRem_32 (CS2), RoyalG_32 (CS2), SCentae_124 (DO), Sam12_31 (CS2), Skog_187 (DO), Sombrero_31 (CS2), Squibbles_31 (CS2), Worcestershire_31 (CS2),

Summary by clusters:

There are 3 clusters represented in this pham: DO, CS4, CS2,

Info for manual annotations of cluster CS2:

- Start number 2 was manually annotated 2 times for cluster CS2.
- Start number 3 was manually annotated 23 times for cluster CS2.

Info for manual annotations of cluster CS4:

- Start number 3 was manually annotated 1 time for cluster CS4.

Info for manual annotations of cluster DO:

- Start number 3 was manually annotated 4 times for cluster DO.

Gene Information:

Gene: Adgers_32 Start: 37251, Stop: 37511, Start Num: 3

Candidate Starts for Adgers_32:

(Start: 3 @37251 has 28 MA's), (4, 37266), (6, 37293), (9, 37368), (12, 37425), (13, 37431), (15, 37464), (16, 37479), (17, 37482),

Gene: Barbochs_31 Start: 37089, Stop: 37349, Start Num: 3

Candidate Starts for Barbochs_31:

(Start: 3 @37089 has 28 MA's), (4, 37104), (6, 37131), (9, 37206), (12, 37263), (13, 37269), (15, 37302), (16, 37317), (17, 37320),

Gene: BenoitCattle_31 Start: 37186, Stop: 37452, Start Num: 3

Candidate Starts for BenoitCattle_31:

(Start: 3 @37186 has 28 MA's), (9, 37303), (12, 37360), (13, 37366), (15, 37405), (16, 37420), (17, 37423),

Gene: BigShaq_31 Start: 37191, Stop: 37457, Start Num: 3

Candidate Starts for BigShaq_31:

(Start: 3 @37191 has 28 MA's), (5, 37209), (6, 37233), (9, 37308), (12, 37365), (15, 37410), (16, 37425), (17, 37428),

Gene: Breezic_31 Start: 37103, Stop: 37363, Start Num: 3

Candidate Starts for Breezic_31:

(Start: 3 @37103 has 28 MA's), (4, 37118), (6, 37145), (9, 37220), (12, 37277), (13, 37283), (15, 37316), (17, 37334),

Gene: CathyBurgh_31 Start: 37957, Stop: 38217, Start Num: 3

Candidate Starts for CathyBurgh_31:

(Start: 3 @37957 has 28 MA's), (4, 37972), (6, 37999), (9, 38074), (12, 38131), (13, 38137), (15, 38170), (16, 38185), (17, 38188),

Gene: Chelms_31 Start: 37194, Stop: 37460, Start Num: 3

Candidate Starts for Chelms_31:

(Start: 3 @37194 has 28 MA's), (6, 37236), (9, 37311), (12, 37368), (13, 37374), (15, 37413), (16, 37428), (17, 37431),

Gene: CherryTomatoes_124 Start: 82121, Stop: 82354, Start Num: 3

Candidate Starts for CherryTomatoes_124:

(1, 82028), (Start: 3 @82121 has 28 MA's), (6, 82163), (14, 82322),

Gene: Crete_32 Start: 37457, Stop: 37723, Start Num: 3

Candidate Starts for Crete_32:

(Start: 3 @37457 has 28 MA's), (9, 37574), (12, 37631), (13, 37637), (15, 37676), (16, 37691), (17, 37694),

Gene: Dakiti_31 Start: 38062, Stop: 38328, Start Num: 3

Candidate Starts for Dakiti_31:

(Start: 3 @38062 has 28 MA's), (6, 38104), (9, 38179), (12, 38236), (13, 38242), (15, 38281), (16, 38296), (17, 38299),

Gene: Eggsie_31 Start: 37210, Stop: 37500, Start Num: 2

Candidate Starts for Eggsie_31:

(Start: 2 @37210 has 2 MA's), (7, 37270), (8, 37312), (10, 37342), (11, 37378), (18, 37471),

Gene: Ekhein_31 Start: 37085, Stop: 37345, Start Num: 3

Candidate Starts for Ekhein_31:

(Start: 3 @37085 has 28 MA's), (4, 37100), (6, 37127), (9, 37202), (12, 37259), (13, 37265), (15, 37298), (17, 37316),

Gene: Exiguo_31 Start: 37097, Stop: 37357, Start Num: 3

Candidate Starts for Exiguo_31:

(Start: 3 @37097 has 28 MA's), (4, 37112), (6, 37139), (9, 37214), (12, 37271), (13, 37277), (15, 37310), (17, 37328),

Gene: Flakey_31 Start: 37961, Stop: 38221, Start Num: 3

Candidate Starts for Flakey_31:

(Start: 3 @37961 has 28 MA's), (4, 37976), (6, 38003), (9, 38078), (12, 38135), (13, 38141), (15, 38174), (17, 38192),

Gene: Gorko_31 Start: 37089, Stop: 37349, Start Num: 3

Candidate Starts for Gorko_31:

(Start: 3 @37089 has 28 MA's), (4, 37104), (6, 37131), (9, 37206), (12, 37263), (13, 37269), (15, 37302), (17, 37320),

Gene: GourdThymes_31 Start: 37963, Stop: 38223, Start Num: 3

Candidate Starts for GourdThymes_31:

(Start: 3 @37963 has 28 MA's), (4, 37978), (6, 38005), (9, 38080), (12, 38137), (13, 38143), (15, 38176), (17, 38194),

Gene: Hollow_31 Start: 39132, Stop: 39392, Start Num: 3

Candidate Starts for Hollow_31:

(Start: 3 @39132 has 28 MA's), (6, 39174), (9, 39249), (13, 39312), (16, 39360), (17, 39363),

Gene: Hotorobo_31 Start: 37968, Stop: 38228, Start Num: 3

Candidate Starts for Hotorobo_31:

(Start: 3 @37968 has 28 MA's), (4, 37983), (6, 38010), (9, 38085), (12, 38142), (13, 38148), (15, 38181), (17, 38199),

Gene: Kelzog_31 Start: 37975, Stop: 38235, Start Num: 3

Candidate Starts for Kelzog_31:

(Start: 3 @37975 has 28 MA's), (4, 37990), (6, 38017), (9, 38092), (12, 38149), (13, 38155), (15, 38188), (17, 38206),

Gene: Linetti_32 Start: 38188, Stop: 38454, Start Num: 3

Candidate Starts for Linetti_32:

(Start: 3 @38188 has 28 MA's), (9, 38305), (12, 38362), (15, 38407), (16, 38422), (17, 38425),

Gene: Lizzo_31 Start: 37957, Stop: 38217, Start Num: 3

Candidate Starts for Lizzo_31:

(Start: 3 @37957 has 28 MA's), (4, 37972), (6, 37999), (9, 38074), (12, 38131), (13, 38137), (15, 38170), (16, 38185), (17, 38188),

Gene: Monty_30 Start: 37107, Stop: 37367, Start Num: 3

Candidate Starts for Monty_30:

(Start: 3 @37107 has 28 MA's), (4, 37122), (6, 37149), (9, 37224), (12, 37281), (13, 37287), (15, 37320), (17, 37338),

Gene: PierreThree_31 Start: 38059, Stop: 38325, Start Num: 3

Candidate Starts for PierreThree_31:

(Start: 3 @38059 has 28 MA's), (6, 38101), (9, 38176), (12, 38233), (13, 38239), (15, 38278), (16, 38293), (17, 38296),

Gene: PokyPuppy_30 Start: 37985, Stop: 38272, Start Num: 2

Candidate Starts for PokyPuppy_30:

(Start: 2 @37985 has 2 MA's), (7, 38045), (8, 38087), (15, 38216),

Gene: Pupper_125 Start: 82970, Stop: 83203, Start Num: 3

Candidate Starts for Pupper_125:

(1, 82877), (Start: 3 @82970 has 28 MA's), (6, 83012), (14, 83171),

Gene: RemRem_32 Start: 37097, Stop: 37357, Start Num: 3

Candidate Starts for RemRem_32:

(Start: 3 @37097 has 28 MA's), (4, 37112), (6, 37139), (9, 37214), (12, 37271), (13, 37277), (15, 37310), (17, 37328),

Gene: RoyalG_32 Start: 37579, Stop: 37839, Start Num: 3

Candidate Starts for RoyalG_32:

(Start: 3 @37579 has 28 MA's), (6, 37621), (9, 37696), (12, 37753), (13, 37759), (15, 37792), (16, 37807), (17, 37810),

Gene: SCentae_124 Start: 83123, Stop: 83356, Start Num: 3

Candidate Starts for SCentae_124:

(1, 83030), (Start: 3 @83123 has 28 MA's), (6, 83165), (14, 83324),

Gene: Sam12_31 Start: 37097, Stop: 37357, Start Num: 3

Candidate Starts for Sam12_31:

(Start: 3 @37097 has 28 MA's), (4, 37112), (6, 37139), (9, 37214), (12, 37271), (13, 37277), (15, 37310), (17, 37328),

Gene: Skog_187 Start: 112853, Stop: 113086, Start Num: 3

Candidate Starts for Skog_187:

(1, 112760), (Start: 3 @112853 has 28 MA's), (6, 112895), (14, 113054),

Gene: Sombrero_31 Start: 37099, Stop: 37359, Start Num: 3

Candidate Starts for Sombrero_31:

(Start: 3 @37099 has 28 MA's), (6, 37141), (9, 37216), (12, 37273), (13, 37279), (15, 37312), (16, 37327), (17, 37330),

Gene: Squibbles_31 Start: 37960, Stop: 38220, Start Num: 3

Candidate Starts for Squibbles_31:

(Start: 3 @37960 has 28 MA's), (4, 37975), (6, 38002), (9, 38077), (12, 38134), (13, 38140), (15, 38173), (17, 38191),

Gene: Worcestershire_31 Start: 37099, Stop: 37359, Start Num: 3

Candidate Starts for Worcestershire_31:

(Start: 3 @37099 has 28 MA's), (4, 37114), (6, 37141), (9, 37216), (12, 37273), (13, 37279), (15, 37312), (17, 37330),