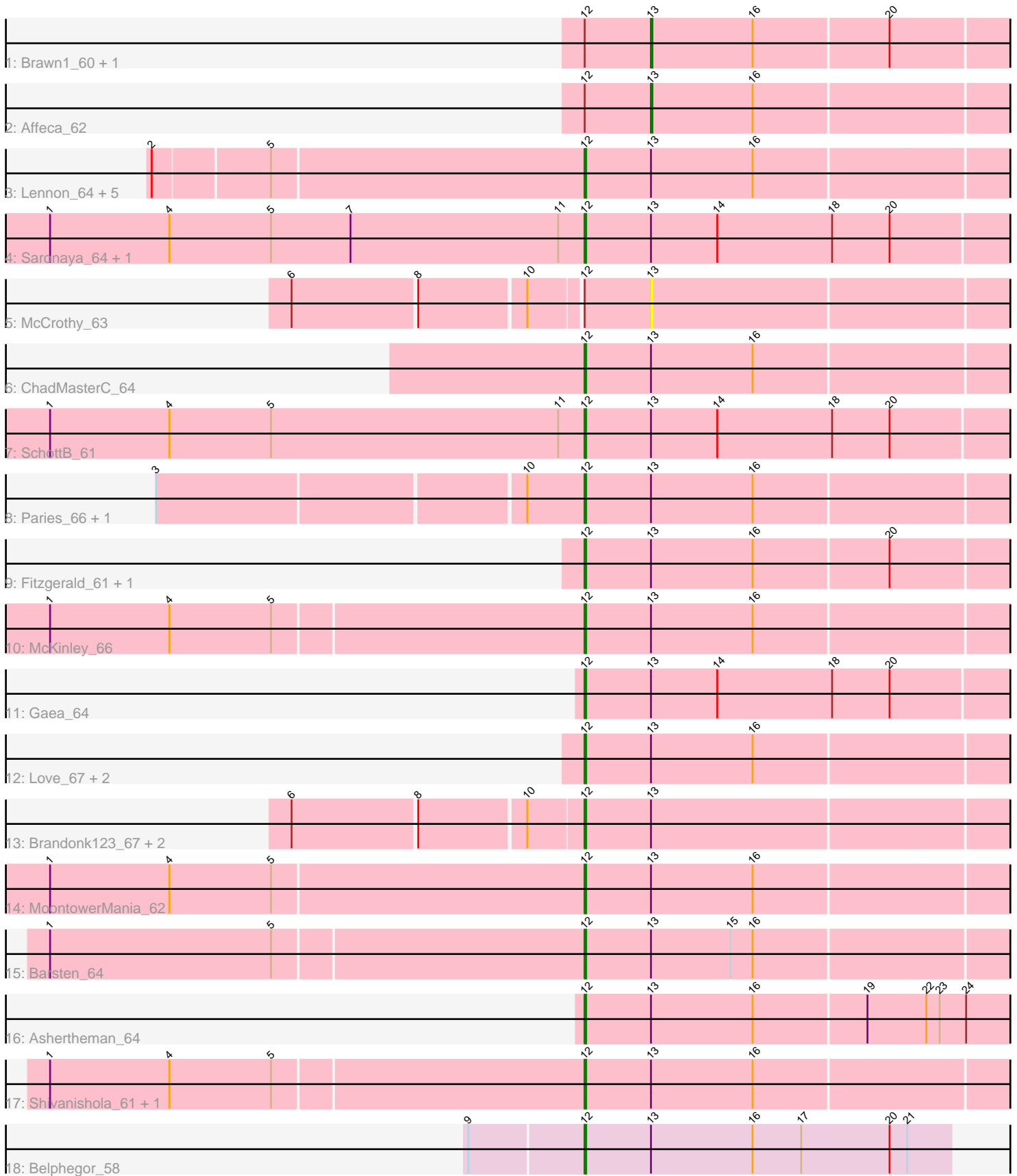


Pham 311853



Note: Tracks are now grouped by subcluster and scaled. Switching in subcluster is indicated by changes in track color. Track scale is now set by default to display the region 30 bp upstream of start 1 to 30 bp downstream of the last possible start. If this default region is judged to be packed too tightly with annotated starts, the track will be further scaled to only show that region of the ORF with annotated starts. This action will be indicated by adding "Zoomed" to the title. For starts, yellow indicates the location of called starts comprised solely of Glimmer/GeneMark auto-annotations, green indicates the location of called starts with at least 1 manual gene annotation.

Pham 311853 Report

This analysis was run 06/27/26 on database version 652.

Pham number 311853 has 32 members, 2 are drafts.

Phages represented in each track:

- Track 1 : Brawn1_60, Sanjuju_62
- Track 2 : Affeca_62
- Track 3 : Lennon_64, Geodirt_63, Sitar_64, Keitabear_63, Stultus_60, Kewpiedoll_63
- Track 4 : Saronaya_64, Gustavo_64
- Track 5 : McCrothy_63
- Track 6 : ChadMasterC_64
- Track 7 : SchottB_61
- Track 8 : Paries_66, Galadriel_63
- Track 9 : Fitzgerald_61, Jabberwocky_61
- Track 10 : McKinley_66
- Track 11 : Gaea_64
- Track 12 : Love_67, RiverRaider_64, Sedona_63
- Track 13 : Brandonk123_67, Kamashten_62, Thing3_62
- Track 14 : MoontowerMania_62
- Track 15 : Barsten_64
- Track 16 : Ashertheman_64
- Track 17 : Shivanishola_61, Angelicage_61
- Track 18 : Belphegor_58

Summary of Final Annotations (See graph section above for start numbers):

The start number called the most often in the published annotations is 12, it was called in 28 of the 30 non-draft genes in the pham.

Genes that call this "Most Annotated" start:

- Angelicage_61, Ashertheman_64, Barsten_64, Belphegor_58, Brandonk123_67, ChadMasterC_64, Fitzgerald_61, Gaea_64, Galadriel_63, Geodirt_63, Gustavo_64, Jabberwocky_61, Kamashten_62, Keitabear_63, Kewpiedoll_63, Lennon_64, Love_67, McKinley_66, MoontowerMania_62, Paries_66, RiverRaider_64, Saronaya_64, SchottB_61, Sedona_63, Shivanishola_61, Sitar_64, Stultus_60, Thing3_62,

Genes that have the "Most Annotated" start but do not call it:

- Affeca_62, Brawn1_60, McCrothy_63, Sanjuju_62,

Genes that do not have the "Most Annotated" start:

-

Summary by start number:

Start 12:

- Found in 32 of 32 (100.0%) of genes in pham
- Manual Annotations of this start: 28 of 30
- Called 87.5% of time when present
- Phage (with cluster) where this start called: Angelicage_61 (DE1), Ashertheman_64 (DE1), Barsten_64 (DE1), Belphegor_58 (DE2), Brandonk123_67 (DE1), ChadMasterC_64 (DE1), Fitzgerald_61 (DE1), Gaea_64 (DE1), Galadriel_63 (DE1), Geodirt_63 (DE1), Gustavo_64 (DE1), Jabberwocky_61 (DE1), Kamashten_62 (DE1), Keitabear_63 (DE1), Kewpiedoll_63 (DE1), Lennon_64 (DE1), Love_67 (DE1), McKinley_66 (DE1), MoontowerMania_62 (DE1), Paries_66 (DE1), RiverRaider_64 (DE1), Saronaya_64 (DE1), SchottB_61 (DE1), Sedona_63 (DE1), Shivanishola_61 (DE1), Sitar_64 (DE1), Stultus_60 (DE1), Thing3_62 (DE1),

Start 13:

- Found in 32 of 32 (100.0%) of genes in pham
- Manual Annotations of this start: 2 of 30
- Called 12.5% of time when present
- Phage (with cluster) where this start called: Affeca_62 (DE1), Brawn1_60 (DE1), McCrothy_63 (DE1), Sanjuju_62 (DE1),

Summary by clusters:

There are 2 clusters represented in this pham: DE1, DE2,

Info for manual annotations of cluster DE1:

- Start number 12 was manually annotated 27 times for cluster DE1.
- Start number 13 was manually annotated 2 times for cluster DE1.

Info for manual annotations of cluster DE2:

- Start number 12 was manually annotated 1 time for cluster DE2.

Gene Information:

Gene: Affeca_62 Start: 50082, Stop: 50321, Start Num: 13

Candidate Starts for Affeca_62:

(Start: 12 @50037 has 28 MA's), (Start: 13 @50082 has 2 MA's), (16, 50151),

Gene: Angelicage_61 Start: 49989, Stop: 50273, Start Num: 12

Candidate Starts for Angelicage_61:

(1, 49632), (4, 49713), (5, 49779), (Start: 12 @49989 has 28 MA's), (Start: 13 @50034 has 2 MA's), (16, 50103),

Gene: Ashertheman_64 Start: 49167, Stop: 49451, Start Num: 12

Candidate Starts for Ashertheman_64:

(Start: 12 @49167 has 28 MA's), (Start: 13 @49212 has 2 MA's), (16, 49281), (19, 49356), (22, 49395), (23, 49404), (24, 49422),

Gene: Barsten_64 Start: 50125, Stop: 50409, Start Num: 12

Candidate Starts for Barsten_64:

(1, 49768), (5, 49918), (Start: 12 @50125 has 28 MA's), (Start: 13 @50170 has 2 MA's), (15, 50224), (16, 50239),

Gene: Belphegor_58 Start: 47990, Stop: 48238, Start Num: 12

Candidate Starts for Belphegor_58:

(9, 47918), (Start: 12 @47990 has 28 MA's), (Start: 13 @48035 has 2 MA's), (16, 48104), (17, 48137), (20, 48197), (21, 48209),

Gene: Brandonk123_67 Start: 49918, Stop: 50202, Start Num: 12

Candidate Starts for Brandonk123_67:

(6, 49735), (8, 49816), (10, 49885), (Start: 12 @49918 has 28 MA's), (Start: 13 @49963 has 2 MA's),

Gene: Brawn1_60 Start: 49372, Stop: 49611, Start Num: 13

Candidate Starts for Brawn1_60:

(Start: 12 @49327 has 28 MA's), (Start: 13 @49372 has 2 MA's), (16, 49441), (20, 49531),

Gene: ChadMasterC_64 Start: 51638, Stop: 51922, Start Num: 12

Candidate Starts for ChadMasterC_64:

(Start: 12 @51638 has 28 MA's), (Start: 13 @51683 has 2 MA's), (16, 51752),

Gene: Fitzgerald_61 Start: 50359, Stop: 50643, Start Num: 12

Candidate Starts for Fitzgerald_61:

(Start: 12 @50359 has 28 MA's), (Start: 13 @50404 has 2 MA's), (16, 50473), (20, 50563),

Gene: Gaea_64 Start: 48940, Stop: 49224, Start Num: 12

Candidate Starts for Gaea_64:

(Start: 12 @48940 has 28 MA's), (Start: 13 @48985 has 2 MA's), (14, 49030), (18, 49108), (20, 49147),

Gene: Galadriel_63 Start: 50552, Stop: 50836, Start Num: 12

Candidate Starts for Galadriel_63:

(3, 50273), (10, 50513), (Start: 12 @50552 has 28 MA's), (Start: 13 @50597 has 2 MA's), (16, 50666),

Gene: Geodirt_63 Start: 50703, Stop: 50987, Start Num: 12

Candidate Starts for Geodirt_63:

(2, 50418), (5, 50493), (Start: 12 @50703 has 28 MA's), (Start: 13 @50748 has 2 MA's), (16, 50817),

Gene: Gustavo_64 Start: 49613, Stop: 49897, Start Num: 12

Candidate Starts for Gustavo_64:

(1, 49250), (4, 49331), (5, 49400), (7, 49454), (11, 49595), (Start: 12 @49613 has 28 MA's), (Start: 13 @49658 has 2 MA's), (14, 49703), (18, 49781), (20, 49820),

Gene: Jabberwocky_61 Start: 50593, Stop: 50877, Start Num: 12

Candidate Starts for Jabberwocky_61:

(Start: 12 @50593 has 28 MA's), (Start: 13 @50638 has 2 MA's), (16, 50707), (20, 50797),

Gene: Kamashten_62 Start: 49351, Stop: 49635, Start Num: 12

Candidate Starts for Kamashten_62:

(6, 49168), (8, 49249), (10, 49318), (Start: 12 @49351 has 28 MA's), (Start: 13 @49396 has 2 MA's),

Gene: Keitabear_63 Start: 51257, Stop: 51541, Start Num: 12
Candidate Starts for Keitabear_63:
(2, 50972), (5, 51047), (Start: 12 @51257 has 28 MA's), (Start: 13 @51302 has 2 MA's), (16, 51371),

Gene: Kewpiedoll_63 Start: 50615, Stop: 50899, Start Num: 12
Candidate Starts for Kewpiedoll_63:
(2, 50330), (5, 50405), (Start: 12 @50615 has 28 MA's), (Start: 13 @50660 has 2 MA's), (16, 50729),

Gene: Lennon_64 Start: 51406, Stop: 51690, Start Num: 12
Candidate Starts for Lennon_64:
(2, 51121), (5, 51196), (Start: 12 @51406 has 28 MA's), (Start: 13 @51451 has 2 MA's), (16, 51520),

Gene: Love_67 Start: 50477, Stop: 50761, Start Num: 12
Candidate Starts for Love_67:
(Start: 12 @50477 has 28 MA's), (Start: 13 @50522 has 2 MA's), (16, 50591),

Gene: McCrothy_63 Start: 51182, Stop: 51421, Start Num: 13
Candidate Starts for McCrothy_63:
(6, 50954), (8, 51035), (10, 51104), (Start: 12 @51137 has 28 MA's), (Start: 13 @51182 has 2 MA's),

Gene: McKinley_66 Start: 50477, Stop: 50761, Start Num: 12
Candidate Starts for McKinley_66:
(1, 50120), (4, 50201), (5, 50270), (Start: 12 @50477 has 28 MA's), (Start: 13 @50522 has 2 MA's),
(16, 50591),

Gene: MoontowerMania_62 Start: 50638, Stop: 50922, Start Num: 12
Candidate Starts for MoontowerMania_62:
(1, 50278), (4, 50359), (5, 50428), (Start: 12 @50638 has 28 MA's), (Start: 13 @50683 has 2 MA's),
(16, 50752),

Gene: Paries_66 Start: 50738, Stop: 51022, Start Num: 12
Candidate Starts for Paries_66:
(3, 50459), (10, 50699), (Start: 12 @50738 has 28 MA's), (Start: 13 @50783 has 2 MA's), (16, 50852),

Gene: RiverRaider_64 Start: 48088, Stop: 48372, Start Num: 12
Candidate Starts for RiverRaider_64:
(Start: 12 @48088 has 28 MA's), (Start: 13 @48133 has 2 MA's), (16, 48202),

Gene: Sanjuju_62 Start: 50536, Stop: 50775, Start Num: 13
Candidate Starts for Sanjuju_62:
(Start: 12 @50491 has 28 MA's), (Start: 13 @50536 has 2 MA's), (16, 50605), (20, 50695),

Gene: Saronaya_64 Start: 49613, Stop: 49897, Start Num: 12
Candidate Starts for Saronaya_64:
(1, 49250), (4, 49331), (5, 49400), (7, 49454), (11, 49595), (Start: 12 @49613 has 28 MA's), (Start: 13 @49658 has 2 MA's), (14, 49703), (18, 49781), (20, 49820),

Gene: SchottB_61 Start: 49523, Stop: 49807, Start Num: 12
Candidate Starts for SchottB_61:
(1, 49160), (4, 49241), (5, 49310), (11, 49505), (Start: 12 @49523 has 28 MA's), (Start: 13 @49568 has 2 MA's), (14, 49613), (18, 49691), (20, 49730),

Gene: Sedona_63 Start: 51205, Stop: 51489, Start Num: 12
Candidate Starts for Sedona_63:
(Start: 12 @51205 has 28 MA's), (Start: 13 @51250 has 2 MA's), (16, 51319),

Gene: Shivanishola_61 Start: 48244, Stop: 48528, Start Num: 12
Candidate Starts for Shivanishola_61:
(1, 47887), (4, 47968), (5, 48037), (Start: 12 @48244 has 28 MA's), (Start: 13 @48289 has 2 MA's),
(16, 48358),

Gene: Sitar_64 Start: 51115, Stop: 51399, Start Num: 12
Candidate Starts for Sitar_64:
(2, 50830), (5, 50905), (Start: 12 @51115 has 28 MA's), (Start: 13 @51160 has 2 MA's), (16, 51229),

Gene: Stultus_60 Start: 49377, Stop: 49661, Start Num: 12
Candidate Starts for Stultus_60:
(2, 49092), (5, 49167), (Start: 12 @49377 has 28 MA's), (Start: 13 @49422 has 2 MA's), (16, 49491),

Gene: Thing3_62 Start: 49351, Stop: 49635, Start Num: 12
Candidate Starts for Thing3_62:
(6, 49168), (8, 49249), (10, 49318), (Start: 12 @49351 has 28 MA's), (Start: 13 @49396 has 2 MA's),