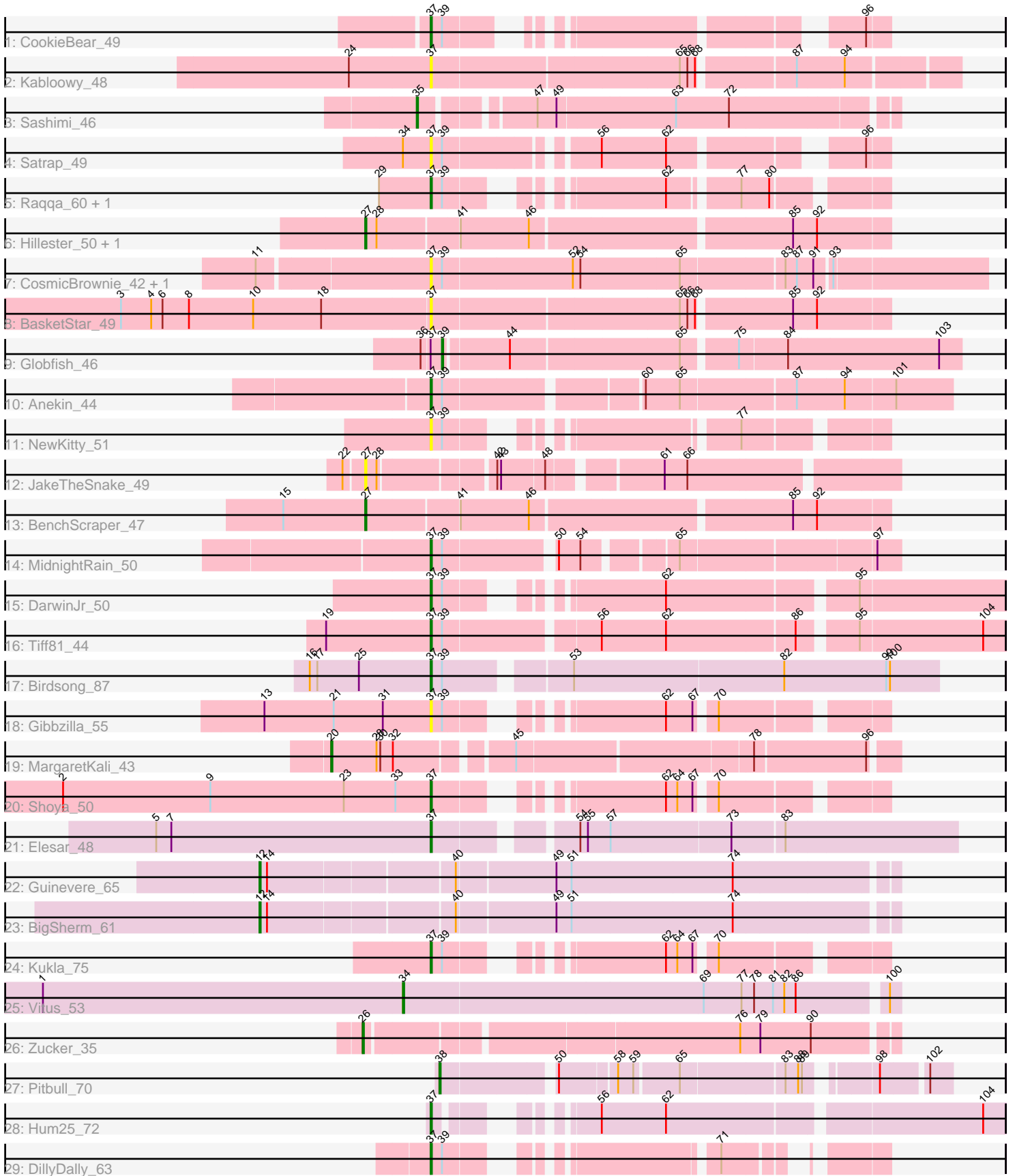


Pham 311861



Note: Tracks are now grouped by subcluster and scaled. Switching in subcluster is indicated by changes in track color. Track scale is now set by default to display the region 30 bp upstream of start 1 to 30 bp downstream of the last possible start. If this default region is judged to be packed too tightly with annotated starts, the track will be further scaled to only show that region of the ORF with annotated starts. This action will be indicated by adding "Zoomed" to the title. For starts, yellow indicates the location of called starts comprised solely of Glimmer/GeneMark auto-annotations, green indicates the location of called starts with at least 1 manual gene annotation.

Pham 311861 Report

This analysis was run 06/27/26 on database version 652.

Pham number 311861 has 32 members, 9 are drafts.

Phages represented in each track:

- Track 1 : CookieBear_49
- Track 2 : Kabloowy_48
- Track 3 : Sashimi_46
- Track 4 : Satrap_49
- Track 5 : Raqqa_60, BrayBeast_49
- Track 6 : Hillester_50, RadFad_50
- Track 7 : CosmicBrownie_42, GumGum_45
- Track 8 : BasketStar_49
- Track 9 : Globfish_46
- Track 10 : Anekin_44
- Track 11 : NewKitty_51
- Track 12 : JakeTheSnake_49
- Track 13 : BenchScraper_47
- Track 14 : MidnightRain_50
- Track 15 : DarwinJr_50
- Track 16 : Tiff81_44
- Track 17 : Birdsong_87
- Track 18 : Gibbzilla_55
- Track 19 : MargaretKali_43
- Track 20 : Shoya_50
- Track 21 : Elesar_48
- Track 22 : Guinevere_65
- Track 23 : BigSherm_61
- Track 24 : Kukla_75
- Track 25 : Vitus_53
- Track 26 : Zucker_35
- Track 27 : Pitbull_70
- Track 28 : Hum25_72
- Track 29 : DillyDally_63

Summary of Final Annotations (See graph section above for start numbers):

The start number called the most often in the published annotations is 37, it was called in 12 of the 23 non-draft genes in the pham.

Genes that call this "Most Annotated" start:

- Anekin_44, BasketStar_49, Birdsong_87, BrayBeast_49, CookieBear_49, CosmicBrownie_42, DarwinJr_50, DillyDally_63, Elesar_48, Gibbzilla_55, GumGum_45, Hum25_72, Kabloowy_48, Kukla_75, MidnightRain_50, NewKitty_51, Raqqa_60, Satrap_49, Shoya_50, Tiff81_44,

Genes that have the "Most Annotated" start but do not call it:

- Globfish_46,

Genes that do not have the "Most Annotated" start:

- BenchScraper_47, BigSherm_61, Guinevere_65, Hillester_50, JakeTheSnake_49, MargaretKali_43, Pitbull_70, RadFad_50, Sashimi_46, Vitus_53, Zucker_35,

Summary by start number:

Start 12:

- Found in 2 of 32 (6.2%) of genes in pham
- Manual Annotations of this start: 2 of 23
- Called 100.0% of time when present
- Phage (with cluster) where this start called: BigSherm_61 (FF), Guinevere_65 (FF),

Start 20:

- Found in 1 of 32 (3.1%) of genes in pham
- Manual Annotations of this start: 1 of 23
- Called 100.0% of time when present
- Phage (with cluster) where this start called: MargaretKali_43 (FB),

Start 26:

- Found in 1 of 32 (3.1%) of genes in pham
- Manual Annotations of this start: 1 of 23
- Called 100.0% of time when present
- Phage (with cluster) where this start called: Zucker_35 (FN),

Start 27:

- Found in 4 of 32 (12.5%) of genes in pham
- Manual Annotations of this start: 3 of 23
- Called 100.0% of time when present
- Phage (with cluster) where this start called: BenchScraper_47 (AY), Hillester_50 (AY), JakeTheSnake_49 (AY), RadFad_50 (AY),

Start 34:

- Found in 2 of 32 (6.2%) of genes in pham
- Manual Annotations of this start: 1 of 23
- Called 50.0% of time when present
- Phage (with cluster) where this start called: Vitus_53 (FL),

Start 35:

- Found in 1 of 32 (3.1%) of genes in pham
- Manual Annotations of this start: 1 of 23
- Called 100.0% of time when present
- Phage (with cluster) where this start called: Sashimi_46 (AY),

Start 37:

- Found in 21 of 32 (65.6%) of genes in pham
- Manual Annotations of this start: 12 of 23
- Called 95.2% of time when present
- Phage (with cluster) where this start called: Anekin_44 (AY), BasketStar_49 (AY), Birdsong_87 (DN), BrayBeast_49 (FB), CookieBear_49 (AY), CosmicBrownie_42 (AY), DarwinJr_50 (AY), DillyDally_63 (singleton), Elesar_48 (FF), Gibbzilla_55 (FB), GumGum_45 (AY), Hum25_72 (FQ1), Kabloowy_48 (AY), Kukla_75 (FJ), MidnightRain_50 (AY), NewKitty_51 (AY), Raqqa_60 (AY), Satrap_49 (AY), Shoya_50 (FB), Tiff81_44 (AY),

Start 38:

- Found in 1 of 32 (3.1%) of genes in pham
- Manual Annotations of this start: 1 of 23
- Called 100.0% of time when present
- Phage (with cluster) where this start called: Pitbull_70 (FQ1),

Start 39:

- Found in 16 of 32 (50.0%) of genes in pham
- Manual Annotations of this start: 1 of 23
- Called 6.2% of time when present
- Phage (with cluster) where this start called: Globfish_46 (AY),

Summary by clusters:

There are 9 clusters represented in this pham: DN, singleton, FB, FF, AY, FJ, FQ1, FL, FN,

Info for manual annotations of cluster AY:

- Start number 27 was manually annotated 3 times for cluster AY.
- Start number 35 was manually annotated 1 time for cluster AY.
- Start number 37 was manually annotated 5 times for cluster AY.
- Start number 39 was manually annotated 1 time for cluster AY.

Info for manual annotations of cluster DN:

- Start number 37 was manually annotated 1 time for cluster DN.

Info for manual annotations of cluster FB:

- Start number 20 was manually annotated 1 time for cluster FB.
- Start number 37 was manually annotated 2 times for cluster FB.

Info for manual annotations of cluster FF:

- Start number 12 was manually annotated 2 times for cluster FF.
- Start number 37 was manually annotated 1 time for cluster FF.

Info for manual annotations of cluster FJ:

- Start number 37 was manually annotated 1 time for cluster FJ.

Info for manual annotations of cluster FL:

- Start number 34 was manually annotated 1 time for cluster FL.

Info for manual annotations of cluster FN:

- Start number 26 was manually annotated 1 time for cluster FN.

Info for manual annotations of cluster FQ1:

- Start number 37 was manually annotated 1 time for cluster FQ1.
- Start number 38 was manually annotated 1 time for cluster FQ1.

Gene Information:

Gene: Anekin_44 Start: 29811, Stop: 30191, Start Num: 37

Candidate Starts for Anekin_44:

(Start: 37 @29811 has 12 MA's), (Start: 39 @29820 has 1 MA's), (60, 29958), (65, 29985), (87, 30072), (94, 30108), (101, 30147),

Gene: BasketStar_49 Start: 30508, Stop: 30852, Start Num: 37

Candidate Starts for BasketStar_49:

(3, 30265), (4, 30289), (6, 30298), (8, 30319), (10, 30370), (18, 30424), (Start: 37 @30508 has 12 MA's), (65, 30697), (66, 30703), (68, 30709), (85, 30778), (92, 30796),

Gene: BenchScraper_47 Start: 29609, Stop: 30001, Start Num: 27

Candidate Starts for BenchScraper_47:

(15, 29546), (Start: 27 @29609 has 3 MA's), (41, 29678), (46, 29732), (85, 29927), (92, 29945),

Gene: BigSherm_61 Start: 37769, Stop: 38245, Start Num: 12

Candidate Starts for BigSherm_61:

(Start: 12 @37769 has 2 MA's), (14, 37775), (40, 37913), (49, 37988), (51, 38000), (74, 38126),

Gene: Birdsong_87 Start: 49769, Stop: 50152, Start Num: 37

Candidate Starts for Birdsong_87:

(16, 49673), (17, 49679), (25, 49712), (Start: 37 @49769 has 12 MA's), (Start: 39 @49778 has 1 MA's), (53, 49865), (82, 50030), (99, 50111), (100, 50114),

Gene: BrayBeast_49 Start: 28984, Stop: 29268, Start Num: 37

Candidate Starts for BrayBeast_49:

(29, 28945), (Start: 37 @28984 has 12 MA's), (Start: 39 @28993 has 1 MA's), (62, 29122), (77, 29170), (80, 29191),

Gene: CookieBear_49 Start: 30179, Stop: 30457, Start Num: 37

Candidate Starts for CookieBear_49:

(Start: 37 @30179 has 12 MA's), (Start: 39 @30188 has 1 MA's), (96, 30440),

Gene: CosmicBrownie_42 Start: 28661, Stop: 29080, Start Num: 37

Candidate Starts for CosmicBrownie_42:

(11, 28532), (Start: 37 @28661 has 12 MA's), (Start: 39 @28670 has 1 MA's), (52, 28769), (54, 28775), (65, 28853), (83, 28931), (87, 28940), (91, 28952), (93, 28964),

Gene: DarwinJr_50 Start: 31091, Stop: 31480, Start Num: 37

Candidate Starts for DarwinJr_50:

(Start: 37 @31091 has 12 MA's), (Start: 39 @31100 has 1 MA's), (62, 31229), (95, 31367),

Gene: DillyDally_63 Start: 38118, Stop: 38381, Start Num: 37

Candidate Starts for DillyDally_63:

(Start: 37 @38118 has 12 MA's), (Start: 39 @38127 has 1 MA's), (71, 38289),

Gene: Elesar_48 Start: 36967, Stop: 37350, Start Num: 37

Candidate Starts for Elesar_48:

(5, 36751), (7, 36763), (Start: 37 @36967 has 12 MA's), (54, 37060), (55, 37066), (57, 37084), (73, 37177), (83, 37216),

Gene: Gibbzilla_55 Start: 29845, Stop: 30132, Start Num: 37

Candidate Starts for Gibbzilla_55:

(13, 29716), (21, 29770), (31, 29809), (Start: 37 @29845 has 12 MA's), (Start: 39 @29854 has 1 MA's), (62, 29983), (67, 30004), (70, 30016),

Gene: Globfish_46 Start: 29462, Stop: 29848, Start Num: 39

Candidate Starts for Globfish_46:

(36, 29447), (Start: 37 @29453 has 12 MA's), (Start: 39 @29462 has 1 MA's), (44, 29510), (65, 29639), (75, 29678), (84, 29714), (103, 29831),

Gene: Guinevere_65 Start: 38393, Stop: 38869, Start Num: 12

Candidate Starts for Guinevere_65:

(Start: 12 @38393 has 2 MA's), (14, 38399), (40, 38537), (49, 38612), (51, 38624), (74, 38750),

Gene: GumGum_45 Start: 29081, Stop: 29500, Start Num: 37

Candidate Starts for GumGum_45:

(11, 28952), (Start: 37 @29081 has 12 MA's), (Start: 39 @29090 has 1 MA's), (52, 29189), (54, 29195), (65, 29273), (83, 29351), (87, 29360), (91, 29372), (93, 29384),

Gene: Hillester_50 Start: 30882, Stop: 31274, Start Num: 27

Candidate Starts for Hillester_50:

(Start: 27 @30882 has 3 MA's), (28, 30891), (41, 30951), (46, 31005), (85, 31200), (92, 31218),

Gene: Hum25_72 Start: 38173, Stop: 38556, Start Num: 37

Candidate Starts for Hum25_72:

(Start: 37 @38173 has 12 MA's), (56, 38254), (62, 38305), (104, 38539),

Gene: JakeTheSnake_49 Start: 30813, Stop: 31190, Start Num: 27

Candidate Starts for JakeTheSnake_49:

(22, 30798), (Start: 27 @30813 has 3 MA's), (28, 30822), (42, 30903), (43, 30906), (48, 30939), (61, 31017), (66, 31035),

Gene: Kabloowy_48 Start: 30785, Stop: 31174, Start Num: 37

Candidate Starts for Kabloowy_48:

(24, 30722), (Start: 37 @30785 has 12 MA's), (65, 30974), (66, 30980), (68, 30986), (87, 31055), (94, 31091),

Gene: Kukla_75 Start: 42658, Stop: 42945, Start Num: 37

Candidate Starts for Kukla_75:

(Start: 37 @42658 has 12 MA's), (Start: 39 @42667 has 1 MA's), (62, 42796), (64, 42805), (67, 42817), (70, 42829),

Gene: MargaretKali_43 Start: 27891, Stop: 28301, Start Num: 20

Candidate Starts for MargaretKali_43:

(Start: 20 @27891 has 1 MA's), (28, 27927), (30, 27930), (32, 27939), (45, 28020), (78, 28197), (96, 28281),

Gene: MidnightRain_50 Start: 31295, Stop: 31621, Start Num: 37
Candidate Starts for MidnightRain_50:
(Start: 37 @31295 has 12 MA's), (Start: 39 @31304 has 1 MA's), (50, 31382), (54, 31397), (65, 31460),
(97, 31604),

Gene: NewKitty_51 Start: 30242, Stop: 30526, Start Num: 37
Candidate Starts for NewKitty_51:
(Start: 37 @30242 has 12 MA's), (Start: 39 @30251 has 1 MA's), (77, 30428),

Gene: Pitbull_70 Start: 37588, Stop: 37938, Start Num: 38
Candidate Starts for Pitbull_70:
(Start: 38 @37588 has 1 MA's), (50, 37669), (58, 37711), (59, 37723), (65, 37756), (83, 37834), (88,
37843), (89, 37846), (98, 37888), (102, 37921),

Gene: RadFad_50 Start: 30882, Stop: 31274, Start Num: 27
Candidate Starts for RadFad_50:
(Start: 27 @30882 has 3 MA's), (28, 30891), (41, 30951), (46, 31005), (85, 31200), (92, 31218),

Gene: Raqqa_60 Start: 33013, Stop: 33297, Start Num: 37
Candidate Starts for Raqqa_60:
(29, 32974), (Start: 37 @33013 has 12 MA's), (Start: 39 @33022 has 1 MA's), (62, 33151), (77, 33199),
(80, 33220),

Gene: Sashimi_46 Start: 30610, Stop: 30951, Start Num: 35
Candidate Starts for Sashimi_46:
(Start: 35 @30610 has 1 MA's), (47, 30685), (49, 30700), (63, 30790), (72, 30832),

Gene: Satrap_49 Start: 30579, Stop: 30881, Start Num: 37
Candidate Starts for Satrap_49:
(Start: 34 @30558 has 1 MA's), (Start: 37 @30579 has 12 MA's), (Start: 39 @30588 has 1 MA's), (56,
30690), (62, 30741), (96, 30864),

Gene: Shoya_50 Start: 29154, Stop: 29441, Start Num: 37
Candidate Starts for Shoya_50:
(2, 28866), (9, 28983), (23, 29088), (33, 29127), (Start: 37 @29154 has 12 MA's), (62, 29292), (64,
29301), (67, 29313), (70, 29325),

Gene: Tiff81_44 Start: 28183, Stop: 28605, Start Num: 37
Candidate Starts for Tiff81_44:
(19, 28102), (Start: 37 @28183 has 12 MA's), (Start: 39 @28192 has 1 MA's), (56, 28303), (62, 28354),
(86, 28453), (95, 28492), (104, 28588),

Gene: Vitus_53 Start: 37944, Stop: 38321, Start Num: 34
Candidate Starts for Vitus_53:
(1, 37659), (Start: 34 @37944 has 1 MA's), (69, 38178), (77, 38208), (78, 38217), (81, 38232), (82,
38241), (86, 38250), (100, 38313),

Gene: Zucker_35 Start: 27460, Stop: 27846, Start Num: 26
Candidate Starts for Zucker_35:
(Start: 26 @27460 has 1 MA's), (76, 27733), (79, 27748), (90, 27787),