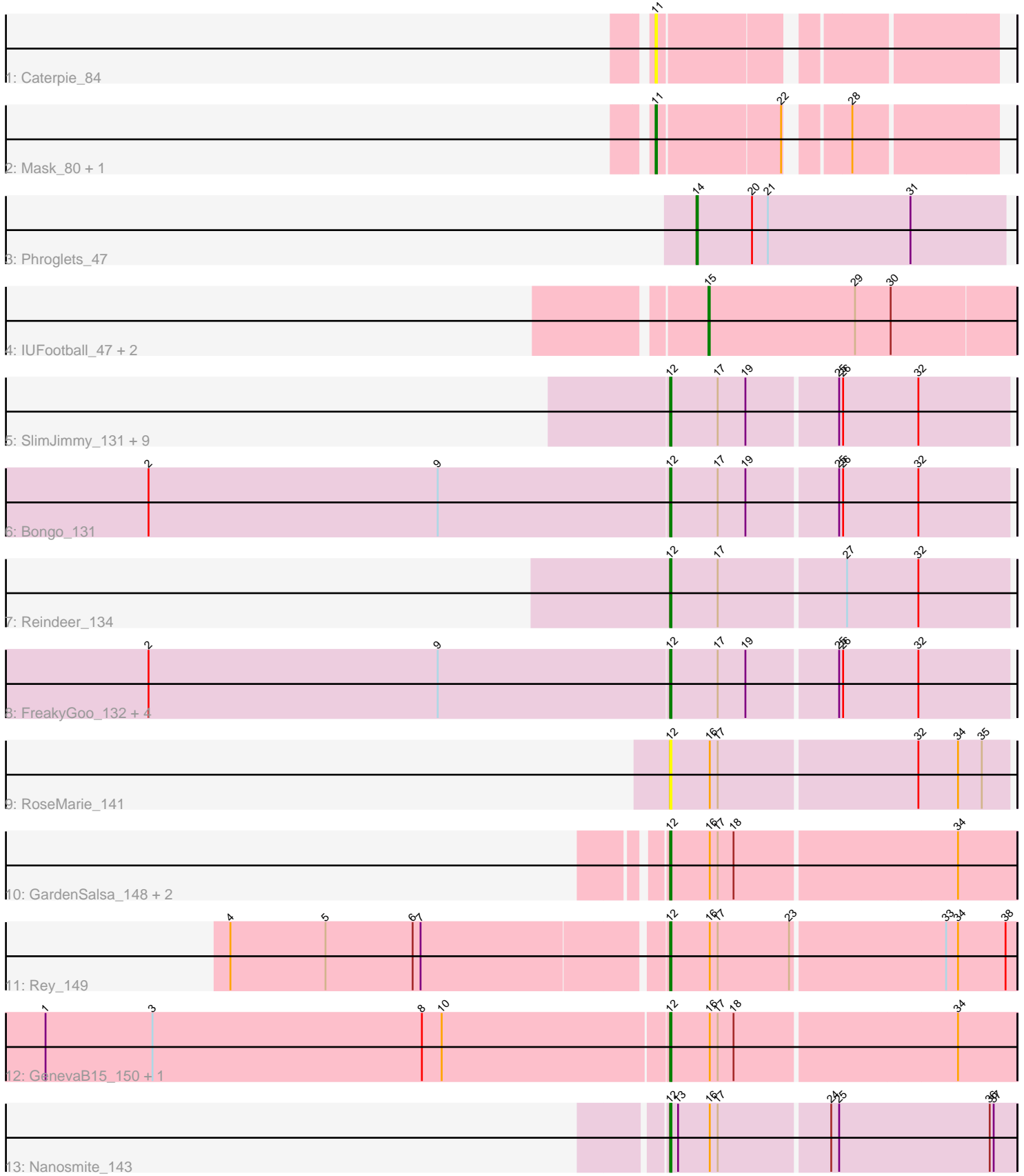


Pham 311864



Note: Tracks are now grouped by subcluster and scaled. Switching in subcluster is indicated by changes in track color. Track scale is now set by default to display the region 30 bp upstream of start 1 to 30 bp downstream of the last possible start. If this default region is judged to be packed too tightly with annotated starts, the track will be further scaled to only show that region of the ORF with annotated starts. This action will be indicated by adding "Zoomed" to the title. For starts, yellow indicates the location of called starts comprised solely of Glimmer/GeneMark auto-annotations, green indicates the location of called starts with at least 1 manual gene annotation.

## Pham 311864 Report

This analysis was run 06/27/26 on database version 652.

Pham number 311864 has 32 members, 5 are drafts.

Phages represented in each track:

- Track 1 : Caterpie\_84
- Track 2 : Mask\_80, Sejanus\_81
- Track 3 : Phroglets\_47
- Track 4 : IUFootball\_47, Maureen\_47, Liebe\_47
- Track 5 : SlimJimmy\_131, PegLeg\_135, Glaske16\_134, Diminimus\_132, Izel\_132, LilhomieP\_132, Skinny\_138, KleverKiS\_135, Dulcita\_132, TpudiCK\_133
- Track 6 : Bongo\_131
- Track 7 : Reindeer\_134
- Track 8 : FreakyGoo\_132, Bricole\_134, TyDawg\_127, IPhone7\_130, Auspice\_132
- Track 9 : RoseMarie\_141
- Track 10 : GardenSalsa\_148, MrMagoo\_150, Estes\_148
- Track 11 : Rey\_149
- Track 12 : GenevaB15\_150, Aziz\_147
- Track 13 : Nanosmite\_143

### ***Summary of Final Annotations (See graph section above for start numbers):***

The start number called the most often in the published annotations is 12, it was called in 22 of the 27 non-draft genes in the pham.

Genes that call this "Most Annotated" start:

- Auspice\_132, Aziz\_147, Bongo\_131, Bricole\_134, Diminimus\_132, Dulcita\_132, Estes\_148, FreakyGoo\_132, GardenSalsa\_148, GenevaB15\_150, Glaske16\_134, IPhone7\_130, Izel\_132, KleverKiS\_135, LilhomieP\_132, MrMagoo\_150, Nanosmite\_143, PegLeg\_135, Reindeer\_134, Rey\_149, RoseMarie\_141, Skinny\_138, SlimJimmy\_131, TpudiCK\_133, TyDawg\_127,

Genes that have the "Most Annotated" start but do not call it:

- 

Genes that do not have the "Most Annotated" start:

- Caterpie\_84, IUFootball\_47, Liebe\_47, Mask\_80, Maureen\_47, Phroglets\_47, Sejanus\_81,

## Summary by start number:

### Start 11:

- Found in 3 of 32 ( 9.4% ) of genes in pham
- Manual Annotations of this start: 2 of 27
- Called 100.0% of time when present
- Phage (with cluster) where this start called: Caterpie\_84 (AD), Mask\_80 (AD), Sejanus\_81 (AD),

### Start 12:

- Found in 25 of 32 ( 78.1% ) of genes in pham
- Manual Annotations of this start: 22 of 27
- Called 100.0% of time when present
- Phage (with cluster) where this start called: Auspice\_132 (M1), Aziz\_147 (M2), Bongo\_131 (M1), Bricole\_134 (M1), Diminimus\_132 (M1), Dulcita\_132 (M1), Estes\_148 (M2), FreakyGoo\_132 (M1), GardenSalsa\_148 (M2), GenevaB15\_150 (M2), Glaske16\_134 (M1), IPhane7\_130 (M1), Izel\_132 (M1), KleverKiS\_135 (M1), LilhomieP\_132 (M1), MrMagoo\_150 (M2), Nanosmite\_143 (M3), PegLeg\_135 (M1), Reindeer\_134 (M1), Rey\_149 (M2), RoseMarie\_141 (M1), Skinny\_138 (M1), SlimJimmy\_131 (M1), TpudiCK\_133 (M1), TyDawg\_127 (M1),

### Start 14:

- Found in 1 of 32 ( 3.1% ) of genes in pham
- Manual Annotations of this start: 1 of 27
- Called 100.0% of time when present
- Phage (with cluster) where this start called: Phroglets\_47 (AV),

### Start 15:

- Found in 3 of 32 ( 9.4% ) of genes in pham
- Manual Annotations of this start: 2 of 27
- Called 100.0% of time when present
- Phage (with cluster) where this start called: IUFootball\_47 (AZ2), Liebe\_47 (AZ2), Maureen\_47 (AZ2),

## Summary by clusters:

There are 6 clusters represented in this pham: AD, M2, M1, M3, AV, AZ2,

### Info for manual annotations of cluster AD:

- Start number 11 was manually annotated 2 times for cluster AD.

### Info for manual annotations of cluster AV:

- Start number 14 was manually annotated 1 time for cluster AV.

### Info for manual annotations of cluster AZ2:

- Start number 15 was manually annotated 2 times for cluster AZ2.

### Info for manual annotations of cluster M1:

- Start number 12 was manually annotated 15 times for cluster M1.

### Info for manual annotations of cluster M2:

- Start number 12 was manually annotated 6 times for cluster M2.

Info for manual annotations of cluster M3:

•Start number 12 was manually annotated 1 time for cluster M3.

**Gene Information:**

Gene: Auspice\_132 Start: 70026, Stop: 69775, Start Num: 12

Candidate Starts for Auspice\_132:

(2, 70419), (9, 70200), (Start: 12 @70026 has 22 MA's), (17, 69990), (19, 69969), (25, 69903), (26, 69900), (32, 69843),

Gene: Aziz\_147 Start: 71227, Stop: 70973, Start Num: 12

Candidate Starts for Aziz\_147:

(1, 71695), (3, 71614), (8, 71410), (10, 71395), (Start: 12 @71227 has 22 MA's), (16, 71197), (17, 71191), (18, 71179), (34, 71017),

Gene: Bongo\_131 Start: 69642, Stop: 69391, Start Num: 12

Candidate Starts for Bongo\_131:

(2, 70035), (9, 69816), (Start: 12 @69642 has 22 MA's), (17, 69606), (19, 69585), (25, 69519), (26, 69516), (32, 69459),

Gene: Bricole\_134 Start: 69790, Stop: 69539, Start Num: 12

Candidate Starts for Bricole\_134:

(2, 70183), (9, 69964), (Start: 12 @69790 has 22 MA's), (17, 69754), (19, 69733), (25, 69667), (26, 69664), (32, 69607),

Gene: Caterpie\_84 Start: 56101, Stop: 56331, Start Num: 11

Candidate Starts for Caterpie\_84:

(Start: 11 @56101 has 2 MA's),

Gene: Diminimus\_132 Start: 69458, Stop: 69207, Start Num: 12

Candidate Starts for Diminimus\_132:

(Start: 12 @69458 has 22 MA's), (17, 69422), (19, 69401), (25, 69335), (26, 69332), (32, 69275),

Gene: Dulcita\_132 Start: 69459, Stop: 69208, Start Num: 12

Candidate Starts for Dulcita\_132:

(Start: 12 @69459 has 22 MA's), (17, 69423), (19, 69402), (25, 69336), (26, 69333), (32, 69276),

Gene: Estes\_148 Start: 71395, Stop: 71141, Start Num: 12

Candidate Starts for Estes\_148:

(Start: 12 @71395 has 22 MA's), (16, 71365), (17, 71359), (18, 71347), (34, 71185),

Gene: FreakyGoo\_132 Start: 69943, Stop: 69692, Start Num: 12

Candidate Starts for FreakyGoo\_132:

(2, 70336), (9, 70117), (Start: 12 @69943 has 22 MA's), (17, 69907), (19, 69886), (25, 69820), (26, 69817), (32, 69760),

Gene: GardenSalsa\_148 Start: 71569, Stop: 71315, Start Num: 12

Candidate Starts for GardenSalsa\_148:

(Start: 12 @71569 has 22 MA's), (16, 71539), (17, 71533), (18, 71521), (34, 71359),

Gene: GenevaB15\_150 Start: 71227, Stop: 70973, Start Num: 12

Candidate Starts for GenevaB15\_150:

(1, 71695), (3, 71614), (8, 71410), (10, 71395), (Start: 12 @71227 has 22 MA's), (16, 71197), (17, 71191), (18, 71179), (34, 71017),

Gene: Glaske16\_134 Start: 70577, Stop: 70326, Start Num: 12

Candidate Starts for Glaske16\_134:

(Start: 12 @70577 has 22 MA's), (17, 70541), (19, 70520), (25, 70454), (26, 70451), (32, 70394),

Gene: IPhone7\_130 Start: 69642, Stop: 69391, Start Num: 12

Candidate Starts for IPhone7\_130:

(2, 70035), (9, 69816), (Start: 12 @69642 has 22 MA's), (17, 69606), (19, 69585), (25, 69519), (26, 69516), (32, 69459),

Gene: IUFootball\_47 Start: 35159, Stop: 35389, Start Num: 15

Candidate Starts for IUFootball\_47:

(Start: 15 @35159 has 2 MA's), (29, 35270), (30, 35297),

Gene: Izel\_132 Start: 69458, Stop: 69207, Start Num: 12

Candidate Starts for Izel\_132:

(Start: 12 @69458 has 22 MA's), (17, 69422), (19, 69401), (25, 69335), (26, 69332), (32, 69275),

Gene: KleverKiS\_135 Start: 70695, Stop: 70444, Start Num: 12

Candidate Starts for KleverKiS\_135:

(Start: 12 @70695 has 22 MA's), (17, 70659), (19, 70638), (25, 70572), (26, 70569), (32, 70512),

Gene: Liebe\_47 Start: 35159, Stop: 35389, Start Num: 15

Candidate Starts for Liebe\_47:

(Start: 15 @35159 has 2 MA's), (29, 35270), (30, 35297),

Gene: LilhomieP\_132 Start: 70488, Stop: 70237, Start Num: 12

Candidate Starts for LilhomieP\_132:

(Start: 12 @70488 has 22 MA's), (17, 70452), (19, 70431), (25, 70365), (26, 70362), (32, 70305),

Gene: Mask\_80 Start: 58173, Stop: 58403, Start Num: 11

Candidate Starts for Mask\_80:

(Start: 11 @58173 has 2 MA's), (22, 58263), (28, 58299),

Gene: Maureen\_47 Start: 35159, Stop: 35389, Start Num: 15

Candidate Starts for Maureen\_47:

(Start: 15 @35159 has 2 MA's), (29, 35270), (30, 35297),

Gene: MrMagoo\_150 Start: 71570, Stop: 71316, Start Num: 12

Candidate Starts for MrMagoo\_150:

(Start: 12 @71570 has 22 MA's), (16, 71540), (17, 71534), (18, 71522), (34, 71360),

Gene: Nanosmite\_143 Start: 71479, Stop: 71222, Start Num: 12

Candidate Starts for Nanosmite\_143:

(Start: 12 @71479 has 22 MA's), (13, 71473), (16, 71449), (17, 71443), (24, 71362), (25, 71356), (36, 71242), (37, 71239),

Gene: PegLeg\_135 Start: 70372, Stop: 70121, Start Num: 12

Candidate Starts for PegLeg\_135:

(Start: 12 @70372 has 22 MA's), (17, 70336), (19, 70315), (25, 70249), (26, 70246), (32, 70189),

Gene: Phroglets\_47 Start: 39977, Stop: 39744, Start Num: 14  
Candidate Starts for Phroglets\_47:  
(Start: 14 @39977 has 1 MA's), (20, 39935), (21, 39923), (31, 39815),

Gene: Reindeer\_134 Start: 71621, Stop: 71370, Start Num: 12  
Candidate Starts for Reindeer\_134:  
(Start: 12 @71621 has 22 MA's), (17, 71585), (27, 71492), (32, 71438),

Gene: Rey\_149 Start: 70820, Stop: 70566, Start Num: 12  
Candidate Starts for Rey\_149:  
(4, 71141), (5, 71069), (6, 71003), (7, 70997), (Start: 12 @70820 has 22 MA's), (16, 70790), (17, 70784), (23, 70730), (33, 70619), (34, 70610), (38, 70574),

Gene: RoseMarie\_141 Start: 73406, Stop: 73155, Start Num: 12  
Candidate Starts for RoseMarie\_141:  
(Start: 12 @73406 has 22 MA's), (16, 73376), (17, 73370), (32, 73223), (34, 73193), (35, 73175),

Gene: Sejanus\_81 Start: 57029, Stop: 57259, Start Num: 11  
Candidate Starts for Sejanus\_81:  
(Start: 11 @57029 has 2 MA's), (22, 57119), (28, 57155),

Gene: Skinny\_138 Start: 71489, Stop: 71238, Start Num: 12  
Candidate Starts for Skinny\_138:  
(Start: 12 @71489 has 22 MA's), (17, 71453), (19, 71432), (25, 71366), (26, 71363), (32, 71306),

Gene: SlimJimmy\_131 Start: 70198, Stop: 69947, Start Num: 12  
Candidate Starts for SlimJimmy\_131:  
(Start: 12 @70198 has 22 MA's), (17, 70162), (19, 70141), (25, 70075), (26, 70072), (32, 70015),

Gene: TpudiCK\_133 Start: 69463, Stop: 69212, Start Num: 12  
Candidate Starts for TpudiCK\_133:  
(Start: 12 @69463 has 22 MA's), (17, 69427), (19, 69406), (25, 69340), (26, 69337), (32, 69280),

Gene: TyDawg\_127 Start: 69645, Stop: 69394, Start Num: 12  
Candidate Starts for TyDawg\_127:  
(2, 70038), (9, 69819), (Start: 12 @69645 has 22 MA's), (17, 69609), (19, 69588), (25, 69522), (26, 69519), (32, 69462),