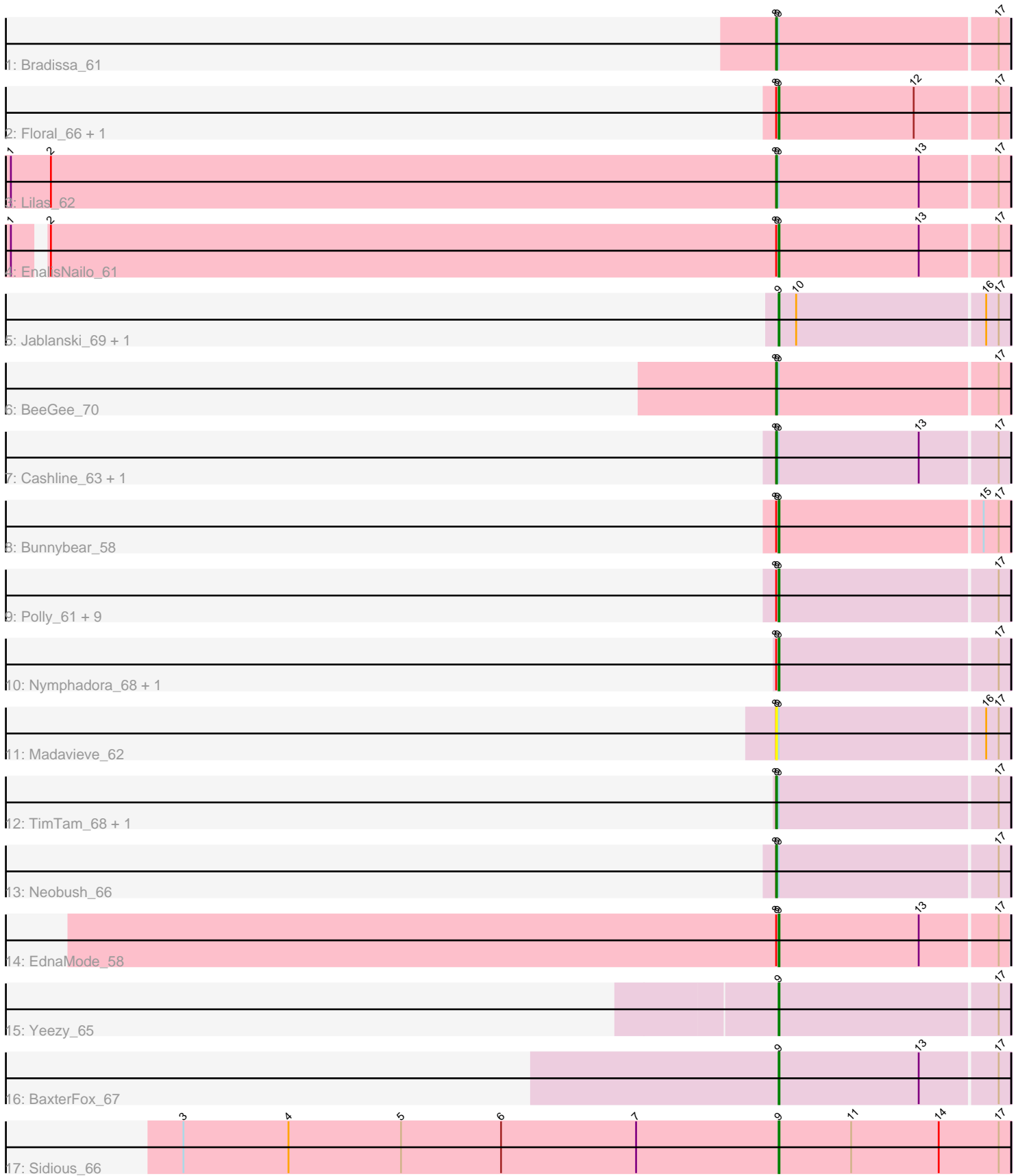


Pham 311872



Note: Tracks are now grouped by subcluster and scaled. Switching in subcluster is indicated by changes in track color. Track scale is now set by default to display the region 30 bp upstream of start 1 to 30 bp downstream of the last possible start. If this default region is judged to be packed too tightly with annotated starts, the track will be further scaled to only show that region of the ORF with annotated starts. This action will be indicated by adding "Zoomed" to the title. For starts, yellow indicates the location of called starts comprised solely of Glimmer/GeneMark auto-annotations, green indicates the location of called starts with at least 1 manual gene annotation.

Pham 311872 Report

This analysis was run 06/27/26 on database version 652.

Pham number 311872 has 31 members, 2 are drafts.

Phages represented in each track:

- Track 1 : Bradissa_61
- Track 2 : Floral_66, Pollux_68
- Track 3 : Lilas_62
- Track 4 : EnalisNailo_61
- Track 5 : Jablanski_69, Pytheas_69
- Track 6 : BeeGee_70
- Track 7 : Cashline_63, SushiChef_62
- Track 8 : Bunnybear_58
- Track 9 : Polly_61, Suscepit_64, Manasvini_65, Eudoria_64, Maridalia_66, Trumpet_64, Antonio_64, Zameen_64, Tayonia_64, Kita_65
- Track 10 : Nymphadora_68, Eviarto_68
- Track 11 : Madavieve_62
- Track 12 : TimTam_68, BatStarr_67
- Track 13 : Neobush_66
- Track 14 : EdnaMode_58
- Track 15 : Yeezy_65
- Track 16 : BaxterFox_67
- Track 17 : Sidious_66

Summary of Final Annotations (See graph section above for start numbers):

The start number called the most often in the published annotations is 9, it was called in 22 of the 29 non-draft genes in the pham.

Genes that call this "Most Annotated" start:

- Antonio_64, BaxterFox_67, Bunnybear_58, EdnaMode_58, EnalisNailo_61, Eudoria_64, Eviarto_68, Floral_66, Jablanski_69, Kita_65, Manasvini_65, Maridalia_66, Nymphadora_68, Pollux_68, Polly_61, Pytheas_69, Sidious_66, Suscepit_64, Tayonia_64, Trumpet_64, Yeezy_65, Zameen_64,

Genes that have the "Most Annotated" start but do not call it:

- BatStarr_67, BeeGee_70, Bradissa_61, Cashline_63, Lilas_62, Madavieve_62, Neobush_66, SushiChef_62, TimTam_68,

Genes that do not have the "Most Annotated" start:

-

Summary by start number:

Start 8:

- Found in 26 of 31 (83.9%) of genes in pham
- Manual Annotations of this start: 7 of 29
- Called 34.6% of time when present
- Phage (with cluster) where this start called: BatStarr_67 (CZ1), BeeGee_70 (CY5), Bradissa_61 (CY1), Cashline_63 (CY6), Lilas_62 (CY1), Madavieve_62 (CZ1), Neobush_66 (CZ1), SushiChef_62 (CZ), TimTam_68 (CZ1),

Start 9:

- Found in 31 of 31 (100.0%) of genes in pham
- Manual Annotations of this start: 22 of 29
- Called 71.0% of time when present
- Phage (with cluster) where this start called: Antonio_64 (CZ1), BaxterFox_67 (CZ3), Bunnybear_58 (CZ), EdnaMode_58 (CZ2), EnalisNailo_61 (CY1), Eudoria_64 (CZ1), Eviarto_68 (CZ1), Floral_66 (CY1), Jablanski_69 (CY3), Kita_65 (CZ1), Manasvini_65 (CZ1), Maridalia_66 (CZ1), Nymphadora_68 (CZ1), Pollux_68 (CY1), Polly_61 (CZ1), Pytheas_69 (CY3), Sidious_66 (CZ7), Suscepit_64 (CZ1), Tayonia_64 (CZ1), Trumpet_64 (CZ1), Yeezy_65 (CZ3), Zameen_64 (CZ1),

Summary by clusters:

There are 9 clusters represented in this pham: CY3, CY1, CY6, CY5, CZ2, CZ3, CZ1, CZ7, CZ,

Info for manual annotations of cluster CY1:

- Start number 8 was manually annotated 2 times for cluster CY1.
- Start number 9 was manually annotated 3 times for cluster CY1.

Info for manual annotations of cluster CY3:

- Start number 9 was manually annotated 2 times for cluster CY3.

Info for manual annotations of cluster CY5:

- Start number 8 was manually annotated 1 time for cluster CY5.

Info for manual annotations of cluster CY6:

- Start number 8 was manually annotated 1 time for cluster CY6.

Info for manual annotations of cluster CZ:

- Start number 9 was manually annotated 1 time for cluster CZ.

Info for manual annotations of cluster CZ1:

- Start number 8 was manually annotated 3 times for cluster CZ1.
- Start number 9 was manually annotated 12 times for cluster CZ1.

Info for manual annotations of cluster CZ2:

- Start number 9 was manually annotated 1 time for cluster CZ2.

Info for manual annotations of cluster CZ3:

•Start number 9 was manually annotated 2 times for cluster CZ3.

Info for manual annotations of cluster CZ7:

•Start number 9 was manually annotated 1 time for cluster CZ7.

Gene Information:

Gene: Antonio_64 Start: 43740, Stop: 44012, Start Num: 9

Candidate Starts for Antonio_64:

(Start: 8 @43737 has 7 MA's), (Start: 9 @43740 has 22 MA's), (17, 43998),

Gene: BatStarr_67 Start: 46771, Stop: 47046, Start Num: 8

Candidate Starts for BatStarr_67:

(Start: 8 @46771 has 7 MA's), (Start: 9 @46774 has 22 MA's), (17, 47032),

Gene: BaxterFox_67 Start: 46254, Stop: 46526, Start Num: 9

Candidate Starts for BaxterFox_67:

(Start: 9 @46254 has 22 MA's), (13, 46422), (17, 46512),

Gene: BeeGee_70 Start: 45720, Stop: 45995, Start Num: 8

Candidate Starts for BeeGee_70:

(Start: 8 @45720 has 7 MA's), (Start: 9 @45723 has 22 MA's), (17, 45981),

Gene: Bradissa_61 Start: 44770, Stop: 45042, Start Num: 8

Candidate Starts for Bradissa_61:

(Start: 8 @44770 has 7 MA's), (Start: 9 @44773 has 22 MA's), (17, 45031),

Gene: Bunnybear_58 Start: 43459, Stop: 43731, Start Num: 9

Candidate Starts for Bunnybear_58:

(Start: 8 @43456 has 7 MA's), (Start: 9 @43459 has 22 MA's), (15, 43699), (17, 43717),

Gene: Cashline_63 Start: 45569, Stop: 45841, Start Num: 8

Candidate Starts for Cashline_63:

(Start: 8 @45569 has 7 MA's), (Start: 9 @45572 has 22 MA's), (13, 45740), (17, 45830),

Gene: EdnaMode_58 Start: 39561, Stop: 39830, Start Num: 9

Candidate Starts for EdnaMode_58:

(Start: 8 @39558 has 7 MA's), (Start: 9 @39561 has 22 MA's), (13, 39729), (17, 39819),

Gene: EnalisNailo_61 Start: 44633, Stop: 44905, Start Num: 9

Candidate Starts for EnalisNailo_61:

(1, 43730), (2, 43760), (Start: 8 @44630 has 7 MA's), (Start: 9 @44633 has 22 MA's), (13, 44801), (17, 44891),

Gene: Eudoria_64 Start: 43740, Stop: 44012, Start Num: 9

Candidate Starts for Eudoria_64:

(Start: 8 @43737 has 7 MA's), (Start: 9 @43740 has 22 MA's), (17, 43998),

Gene: Eviarto_68 Start: 46749, Stop: 47021, Start Num: 9

Candidate Starts for Eviarto_68:

(Start: 8 @46746 has 7 MA's), (Start: 9 @46749 has 22 MA's), (17, 47007),

Gene: Floral_66 Start: 46730, Stop: 46999, Start Num: 9

Candidate Starts for Floral_66:

(Start: 8 @46727 has 7 MA's), (Start: 9 @46730 has 22 MA's), (12, 46892), (17, 46988),

Gene: Jablanski_69 Start: 47555, Stop: 47827, Start Num: 9

Candidate Starts for Jablanski_69:

(Start: 9 @47555 has 22 MA's), (10, 47576), (16, 47798), (17, 47813),

Gene: Kita_65 Start: 43749, Stop: 44021, Start Num: 9

Candidate Starts for Kita_65:

(Start: 8 @43746 has 7 MA's), (Start: 9 @43749 has 22 MA's), (17, 44007),

Gene: Lilas_62 Start: 46168, Stop: 46443, Start Num: 8

Candidate Starts for Lilas_62:

(1, 45250), (2, 45298), (Start: 8 @46168 has 7 MA's), (Start: 9 @46171 has 22 MA's), (13, 46339), (17, 46429),

Gene: Madavieve_62 Start: 44992, Stop: 45267, Start Num: 8

Candidate Starts for Madavieve_62:

(Start: 8 @44992 has 7 MA's), (Start: 9 @44995 has 22 MA's), (16, 45238), (17, 45253),

Gene: Manasvini_65 Start: 43764, Stop: 44036, Start Num: 9

Candidate Starts for Manasvini_65:

(Start: 8 @43761 has 7 MA's), (Start: 9 @43764 has 22 MA's), (17, 44022),

Gene: Maridalia_66 Start: 45118, Stop: 45390, Start Num: 9

Candidate Starts for Maridalia_66:

(Start: 8 @45115 has 7 MA's), (Start: 9 @45118 has 22 MA's), (17, 45376),

Gene: Neobush_66 Start: 44305, Stop: 44580, Start Num: 8

Candidate Starts for Neobush_66:

(Start: 8 @44305 has 7 MA's), (Start: 9 @44308 has 22 MA's), (17, 44566),

Gene: Nymphadora_68 Start: 46773, Stop: 47045, Start Num: 9

Candidate Starts for Nymphadora_68:

(Start: 8 @46770 has 7 MA's), (Start: 9 @46773 has 22 MA's), (17, 47031),

Gene: Pollux_68 Start: 46730, Stop: 46999, Start Num: 9

Candidate Starts for Pollux_68:

(Start: 8 @46727 has 7 MA's), (Start: 9 @46730 has 22 MA's), (12, 46892), (17, 46988),

Gene: Polly_61 Start: 43183, Stop: 43455, Start Num: 9

Candidate Starts for Polly_61:

(Start: 8 @43180 has 7 MA's), (Start: 9 @43183 has 22 MA's), (17, 43441),

Gene: Pytheas_69 Start: 47554, Stop: 47826, Start Num: 9

Candidate Starts for Pytheas_69:

(Start: 9 @47554 has 22 MA's), (10, 47575), (16, 47797), (17, 47812),

Gene: Sidious_66 Start: 46334, Stop: 46612, Start Num: 9

Candidate Starts for Sidious_66:

(3, 45620), (4, 45746), (5, 45881), (6, 46001), (7, 46163), (Start: 9 @46334 has 22 MA's), (11, 46421), (14, 46526), (17, 46598),

Gene: Suscepit_64 Start: 43741, Stop: 44013, Start Num: 9

Candidate Starts for Suscepit_64:

(Start: 8 @43738 has 7 MA's), (Start: 9 @43741 has 22 MA's), (17, 43999),

Gene: SushiChef_62 Start: 45967, Stop: 46242, Start Num: 8

Candidate Starts for SushiChef_62:

(Start: 8 @45967 has 7 MA's), (Start: 9 @45970 has 22 MA's), (13, 46138), (17, 46228),

Gene: Tayonia_64 Start: 43740, Stop: 44012, Start Num: 9

Candidate Starts for Tayonia_64:

(Start: 8 @43737 has 7 MA's), (Start: 9 @43740 has 22 MA's), (17, 43998),

Gene: TimTam_68 Start: 46770, Stop: 47045, Start Num: 8

Candidate Starts for TimTam_68:

(Start: 8 @46770 has 7 MA's), (Start: 9 @46773 has 22 MA's), (17, 47031),

Gene: Trumpet_64 Start: 43741, Stop: 44013, Start Num: 9

Candidate Starts for Trumpet_64:

(Start: 8 @43738 has 7 MA's), (Start: 9 @43741 has 22 MA's), (17, 43999),

Gene: Yeezy_65 Start: 42919, Stop: 43191, Start Num: 9

Candidate Starts for Yeezy_65:

(Start: 9 @42919 has 22 MA's), (17, 43177),

Gene: Zameen_64 Start: 43740, Stop: 44012, Start Num: 9

Candidate Starts for Zameen_64:

(Start: 8 @43737 has 7 MA's), (Start: 9 @43740 has 22 MA's), (17, 43998),