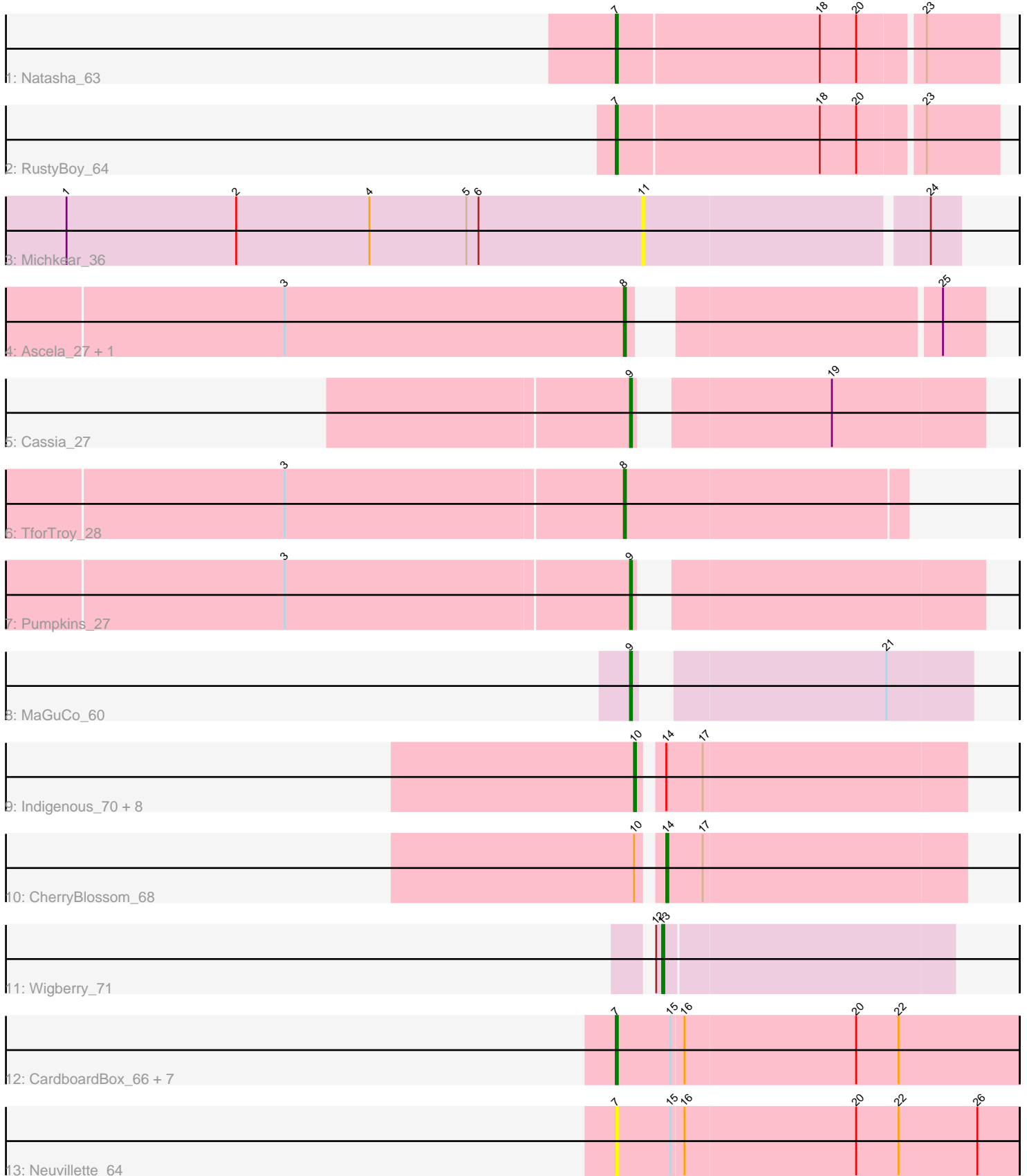


Pham 311887



Note: Tracks are now grouped by subcluster and scaled. Switching in subcluster is indicated by changes in track color. Track scale is now set by default to display the region 30 bp upstream of start 1 to 30 bp downstream of the last possible start. If this default region is judged to be packed too tightly with annotated starts, the track will be further scaled to only show that region of the ORF with annotated starts. This action will be indicated by adding "Zoomed" to the title. For starts, yellow indicates the location of called starts comprised solely of Glimmer/GeneMark auto-annotations, green indicates the location of called starts with at least 1 manual gene annotation.

## Pham 311887 Report

This analysis was run 06/27/26 on database version 652.

Pham number 311887 has 29 members, 6 are drafts.

Phages represented in each track:

- Track 1 : Natasha\_63
- Track 2 : RustyBoy\_64
- Track 3 : Michkear\_36
- Track 4 : Ascela\_27, Iter\_27
- Track 5 : Cassia\_27
- Track 6 : TforTroy\_28
- Track 7 : Pumpkins\_27
- Track 8 : MaGuCo\_60
- Track 9 : Indigenous\_70, IceWarrior\_67, FidgetOrca\_70, Namu\_69, Hoshi\_69, Meibysrarus\_66, TonyStarch\_67, Jaylociraptor\_68, Maya\_68
- Track 10 : CherryBlossom\_68
- Track 11 : Wigberry\_71
- Track 12 : CardboardBox\_66, Ezurina\_66, ChipsNGuac\_65, Gerri43\_64, Roberts\_65, ChamoyPickle\_66, AnnabelLee\_66, Studio\_66
- Track 13 : Neuville\_64

### ***Summary of Final Annotations (See graph section above for start numbers):***

The start number called the most often in the published annotations is 10, it was called in 9 of the 23 non-draft genes in the pham.

Genes that call this "Most Annotated" start:

- FidgetOrca\_70, Hoshi\_69, IceWarrior\_67, Indigenous\_70, Jaylociraptor\_68, Maya\_68, Meibysrarus\_66, Namu\_69, TonyStarch\_67,

Genes that have the "Most Annotated" start but do not call it:

- CherryBlossom\_68,

Genes that do not have the "Most Annotated" start:

- AnnabelLee\_66, Ascela\_27, CardboardBox\_66, Cassia\_27, ChamoyPickle\_66, ChipsNGuac\_65, Ezurina\_66, Gerri43\_64, Iter\_27, MaGuCo\_60, Michkear\_36, Natasha\_63, Neuville\_64, Pumpkins\_27, Roberts\_65, RustyBoy\_64, Studio\_66, TforTroy\_28, Wigberry\_71,

## Summary by start number:

### Start 7:

- Found in 11 of 29 ( 37.9% ) of genes in pham
- Manual Annotations of this start: 6 of 23
- Called 100.0% of time when present
- Phage (with cluster) where this start called: AnnabelLee\_66 (FR), CardboardBox\_66 (FR), ChamoyPickle\_66 (FR), ChipsNGuac\_65 (FR), Ezurina\_66 (FR), Gerri43\_64 (FR), Natasha\_63 (AW), Neuville\_64 (FR), Roberts\_65 (FR), RustyBoy\_64 (AW), Studio\_66 (FR),

### Start 8:

- Found in 3 of 29 ( 10.3% ) of genes in pham
- Manual Annotations of this start: 3 of 23
- Called 100.0% of time when present
- Phage (with cluster) where this start called: Ascela\_27 (AZ1), Iter\_27 (AZ1), TforTroy\_28 (AZ1),

### Start 9:

- Found in 3 of 29 ( 10.3% ) of genes in pham
- Manual Annotations of this start: 3 of 23
- Called 100.0% of time when present
- Phage (with cluster) where this start called: Cassia\_27 (AZ1), MaGuCo\_60 (AZ2), Pumpkins\_27 (AZ1),

### Start 10:

- Found in 10 of 29 ( 34.5% ) of genes in pham
- Manual Annotations of this start: 9 of 23
- Called 90.0% of time when present
- Phage (with cluster) where this start called: FidgetOrca\_70 (BI1), Hoshi\_69 (BI1), IceWarrior\_67 (BI1), Indigenous\_70 (BI1), Jaylociraptor\_68 (BI1), Maya\_68 (BI1), Meibysrarus\_66 (BI1), Namu\_69 (BI1), TonyStarch\_67 (BI1),

### Start 11:

- Found in 1 of 29 ( 3.4% ) of genes in pham
- No Manual Annotations of this start.
- Called 100.0% of time when present
- Phage (with cluster) where this start called: Michkear\_36 (AZ),

### Start 13:

- Found in 1 of 29 ( 3.4% ) of genes in pham
- Manual Annotations of this start: 1 of 23
- Called 100.0% of time when present
- Phage (with cluster) where this start called: Wigberry\_71 (BI5),

### Start 14:

- Found in 10 of 29 ( 34.5% ) of genes in pham
- Manual Annotations of this start: 1 of 23
- Called 10.0% of time when present
- Phage (with cluster) where this start called: CherryBlossom\_68 (BI1),

## Summary by clusters:

There are 7 clusters represented in this pham: FR, AZ, AW, AZ1, AZ2, BI5, BI1,

Info for manual annotations of cluster AW:

- Start number 7 was manually annotated 2 times for cluster AW.

Info for manual annotations of cluster AZ1:

- Start number 8 was manually annotated 3 times for cluster AZ1.
- Start number 9 was manually annotated 2 times for cluster AZ1.

Info for manual annotations of cluster AZ2:

- Start number 9 was manually annotated 1 time for cluster AZ2.

Info for manual annotations of cluster BI1:

- Start number 10 was manually annotated 9 times for cluster BI1.
- Start number 14 was manually annotated 1 time for cluster BI1.

Info for manual annotations of cluster BI5:

- Start number 13 was manually annotated 1 time for cluster BI5.

Info for manual annotations of cluster FR:

- Start number 7 was manually annotated 4 times for cluster FR.

### ***Gene Information:***

Gene: AnnabelLee\_66 Start: 37076, Stop: 36879, Start Num: 7

Candidate Starts for AnnabelLee\_66:

(Start: 7 @37076 has 6 MA's), (15, 37049), (16, 37043), (20, 36959), (22, 36938),

Gene: Ascela\_27 Start: 22290, Stop: 22442, Start Num: 8

Candidate Starts for Ascela\_27:

(3, 22122), (Start: 8 @22290 has 3 MA's), (25, 22422),

Gene: CardboardBox\_66 Start: 37079, Stop: 36882, Start Num: 7

Candidate Starts for CardboardBox\_66:

(Start: 7 @37079 has 6 MA's), (15, 37052), (16, 37046), (20, 36962), (22, 36941),

Gene: Cassia\_27 Start: 22739, Stop: 22894, Start Num: 9

Candidate Starts for Cassia\_27:

(Start: 9 @22739 has 3 MA's), (19, 22820),

Gene: ChamoyPickle\_66 Start: 37619, Stop: 37422, Start Num: 7

Candidate Starts for ChamoyPickle\_66:

(Start: 7 @37619 has 6 MA's), (15, 37592), (16, 37586), (20, 37502), (22, 37481),

Gene: CherryBlossom\_68 Start: 43842, Stop: 43988, Start Num: 14

Candidate Starts for CherryBlossom\_68:

(Start: 10 @43833 has 9 MA's), (Start: 14 @43842 has 1 MA's), (17, 43860),

Gene: ChipsNGuac\_65 Start: 37079, Stop: 36882, Start Num: 7

Candidate Starts for ChipsNGuac\_65:

(Start: 7 @37079 has 6 MA's), (15, 37052), (16, 37046), (20, 36962), (22, 36941),

Gene: Ezurina\_66 Start: 38065, Stop: 37868, Start Num: 7

Candidate Starts for Ezurina\_66:

(Start: 7 @38065 has 6 MA's), (15, 38038), (16, 38032), (20, 37948), (22, 37927),

Gene: FidgetOrca\_70 Start: 44369, Stop: 44524, Start Num: 10

Candidate Starts for FidgetOrca\_70:

(Start: 10 @44369 has 9 MA's), (Start: 14 @44378 has 1 MA's), (17, 44396),

Gene: Gerri43\_64 Start: 37079, Stop: 36882, Start Num: 7

Candidate Starts for Gerri43\_64:

(Start: 7 @37079 has 6 MA's), (15, 37052), (16, 37046), (20, 36962), (22, 36941),

Gene: Hoshi\_69 Start: 43976, Stop: 44131, Start Num: 10

Candidate Starts for Hoshi\_69:

(Start: 10 @43976 has 9 MA's), (Start: 14 @43985 has 1 MA's), (17, 44003),

Gene: IceWarrior\_67 Start: 43652, Stop: 43807, Start Num: 10

Candidate Starts for IceWarrior\_67:

(Start: 10 @43652 has 9 MA's), (Start: 14 @43661 has 1 MA's), (17, 43679),

Gene: Indigenous\_70 Start: 44373, Stop: 44528, Start Num: 10

Candidate Starts for Indigenous\_70:

(Start: 10 @44373 has 9 MA's), (Start: 14 @44382 has 1 MA's), (17, 44400),

Gene: Iter\_27 Start: 22290, Stop: 22442, Start Num: 8

Candidate Starts for Iter\_27:

(3, 22122), (Start: 8 @22290 has 3 MA's), (25, 22422),

Gene: Jaylociraptor\_68 Start: 43969, Stop: 44124, Start Num: 10

Candidate Starts for Jaylociraptor\_68:

(Start: 10 @43969 has 9 MA's), (Start: 14 @43978 has 1 MA's), (17, 43996),

Gene: MaGuCo\_60 Start: 42542, Stop: 42691, Start Num: 9

Candidate Starts for MaGuCo\_60:

(Start: 9 @42542 has 3 MA's), (21, 42650),

Gene: Maya\_68 Start: 43983, Stop: 44138, Start Num: 10

Candidate Starts for Maya\_68:

(Start: 10 @43983 has 9 MA's), (Start: 14 @43992 has 1 MA's), (17, 44010),

Gene: Meibysrarus\_66 Start: 43346, Stop: 43501, Start Num: 10

Candidate Starts for Meibysrarus\_66:

(Start: 10 @43346 has 9 MA's), (Start: 14 @43355 has 1 MA's), (17, 43373),

Gene: Michkear\_36 Start: 26303, Stop: 26452, Start Num: 11

Candidate Starts for Michkear\_36:

(1, 26018), (2, 26102), (4, 26168), (5, 26216), (6, 26222), (11, 26303), (24, 26438),

Gene: Namo\_69 Start: 44320, Stop: 44475, Start Num: 10

Candidate Starts for Namo\_69:

(Start: 10 @44320 has 9 MA's), (Start: 14 @44329 has 1 MA's), (17, 44347),

Gene: Natasha\_63 Start: 41159, Stop: 41341, Start Num: 7  
Candidate Starts for Natasha\_63:  
(Start: 7 @41159 has 6 MA's), (18, 41258), (20, 41276), (23, 41306),

Gene: Neuville\_64 Start: 37079, Stop: 36882, Start Num: 7  
Candidate Starts for Neuville\_64:  
(Start: 7 @37079 has 6 MA's), (15, 37052), (16, 37046), (20, 36962), (22, 36941), (26, 36902),

Gene: Pumpkins\_27 Start: 23159, Stop: 23314, Start Num: 9  
Candidate Starts for Pumpkins\_27:  
(3, 22991), (Start: 9 @23159 has 3 MA's),

Gene: Roberts\_65 Start: 37079, Stop: 36882, Start Num: 7  
Candidate Starts for Roberts\_65:  
(Start: 7 @37079 has 6 MA's), (15, 37052), (16, 37046), (20, 36962), (22, 36941),

Gene: RustyBoy\_64 Start: 41358, Stop: 41540, Start Num: 7  
Candidate Starts for RustyBoy\_64:  
(Start: 7 @41358 has 6 MA's), (18, 41457), (20, 41475), (23, 41505),

Gene: Studio\_66 Start: 38269, Stop: 38072, Start Num: 7  
Candidate Starts for Studio\_66:  
(Start: 7 @38269 has 6 MA's), (15, 38242), (16, 38236), (20, 38152), (22, 38131),

Gene: TforTroy\_28 Start: 23051, Stop: 23188, Start Num: 8  
Candidate Starts for TforTroy\_28:  
(3, 22886), (Start: 8 @23051 has 3 MA's),

Gene: TonyStarch\_67 Start: 43718, Stop: 43873, Start Num: 10  
Candidate Starts for TonyStarch\_67:  
(Start: 10 @43718 has 9 MA's), (Start: 14 @43727 has 1 MA's), (17, 43745),

Gene: Wigberry\_71 Start: 44498, Stop: 44638, Start Num: 13  
Candidate Starts for Wigberry\_71:  
(12, 44495), (Start: 13 @44498 has 1 MA's),