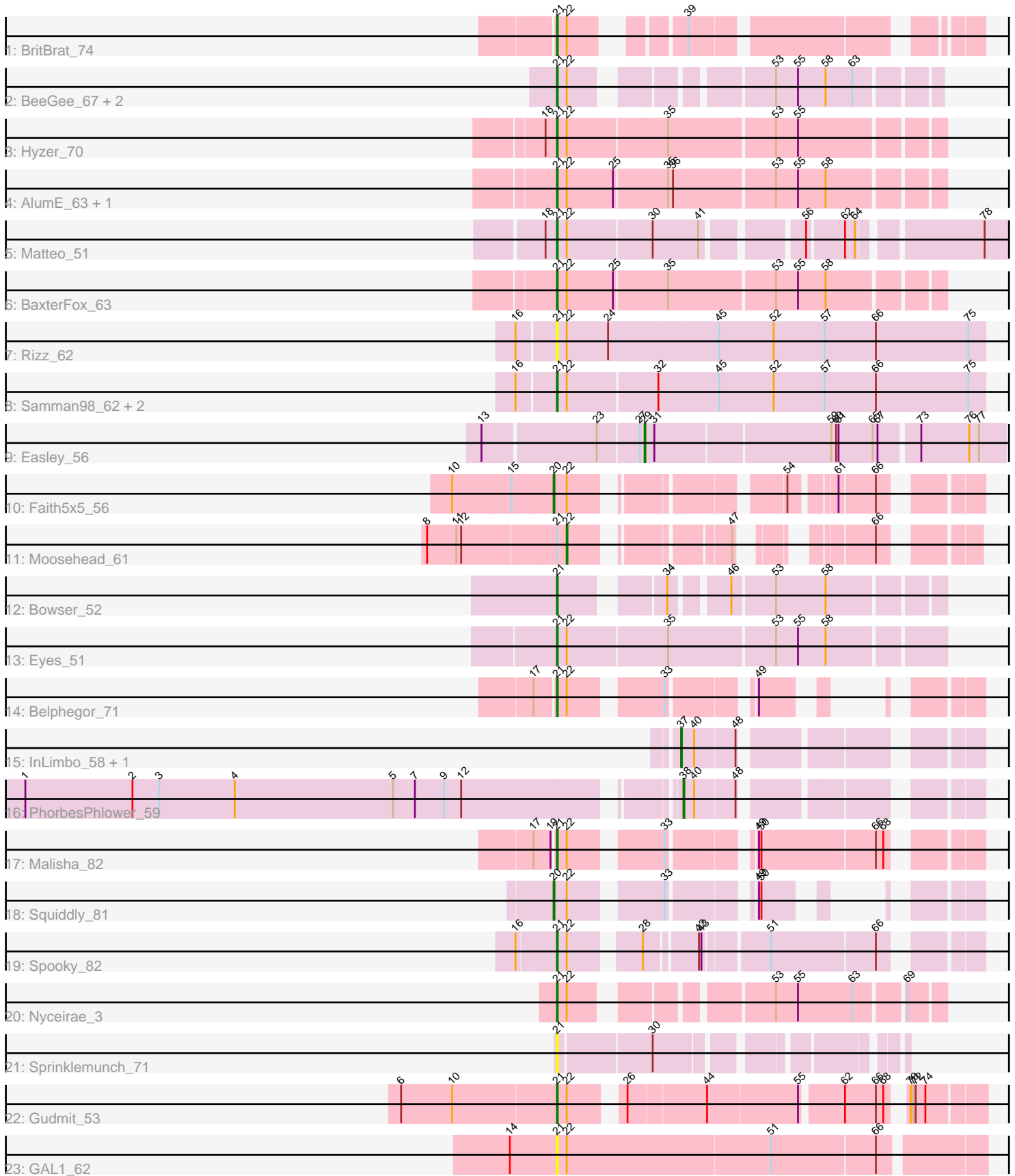


Pham 311896



Note: Tracks are now grouped by subcluster and scaled. Switching in subcluster is indicated by changes in track color. Track scale is now set by default to display the region 30 bp upstream of start 1 to 30 bp downstream of the last possible start. If this default region is judged to be packed too tightly with annotated starts, the track will be further scaled to only show that region of the ORF with annotated starts. This action will be indicated by adding "Zoomed" to the title. For starts, yellow indicates the location of called starts comprised solely of Glimmer/GeneMark auto-annotations, green indicates the location of called starts with at least 1 manual gene annotation.

Pham 311896 Report

This analysis was run 06/27/26 on database version 652.

Pham number 311896 has 29 members, 4 are drafts.

Phages represented in each track:

- Track 1 : BritBrat_74
- Track 2 : BeeGee_67, JCole_55, Yeet412_56
- Track 3 : Hyzer_70
- Track 4 : AlumE_63, BoyNamedSue_63
- Track 5 : Matteo_51
- Track 6 : BaxterFox_63
- Track 7 : Rizz_62
- Track 8 : Samman98_62, Invectra_64, Clark_61
- Track 9 : Easley_56
- Track 10 : Faith5x5_56
- Track 11 : Moosehead_61
- Track 12 : Bowser_52
- Track 13 : Eyes_51
- Track 14 : Belphegor_71
- Track 15 : InLimbo_58, Morkie_61
- Track 16 : PhorbesPhlower_59
- Track 17 : Malisha_82
- Track 18 : Squiddly_81
- Track 19 : Spooky_82
- Track 20 : Nyceirae_3
- Track 21 : Sprinklemunch_71
- Track 22 : Gudmit_53
- Track 23 : GAL1_62

Summary of Final Annotations (See graph section above for start numbers):

The start number called the most often in the published annotations is 21, it was called in 19 of the 25 non-draft genes in the pham.

Genes that call this "Most Annotated" start:

- AlumE_63, BaxterFox_63, BeeGee_67, Belphegor_71, Bowser_52, BoyNamedSue_63, BritBrat_74, Clark_61, Eyes_51, GAL1_62, Gudmit_53, Hyzer_70, Invectra_64, JCole_55, Malisha_82, Matteo_51, Nyceirae_3, Rizz_62, Samman98_62, Spooky_82, Sprinklemunch_71, Yeet412_56,

Genes that have the "Most Annotated" start but do not call it:

- Moosehead_61,

Genes that do not have the "Most Annotated" start:

- Easley_56, Faith5x5_56, InLimbo_58, Morkie_61, PhorbesPhlower_59, Squiddly_81,

Summary by start number:

Start 20:

- Found in 2 of 29 (6.9%) of genes in pham
- Manual Annotations of this start: 2 of 25
- Called 100.0% of time when present
- Phage (with cluster) where this start called: Faith5x5_56 (CZ6), Squiddly_81 (DN2),

Start 21:

- Found in 23 of 29 (79.3%) of genes in pham
- Manual Annotations of this start: 19 of 25
- Called 95.7% of time when present
- Phage (with cluster) where this start called: AlumE_63 (CZ1), BaxterFox_63 (CZ3), BeeGee_67 (CY5), Belphegor_71 (DE2), Bowser_52 (DB), BoyNamedSue_63 (CZ1), BritBrat_74 (CY2), Clark_61 (CZ4), Eyes_51 (DB), GAL1_62 (singleton), Gudmit_53 (singleton), Hyzer_70 (CZ1), Invectra_64 (CZ4), JCole_55 (CZ2), Malisha_82 (DN), Matteo_51 (CZ2), Nyceirae_3 (DT), Rizz_62 (CZ4), Samman98_62 (CZ4), Spooky_82 (DN2), Sprinklemunch_71 (DW), Yeet412_56 (CZ2),

Start 22:

- Found in 23 of 29 (79.3%) of genes in pham
- Manual Annotations of this start: 1 of 25
- Called 4.3% of time when present
- Phage (with cluster) where this start called: Moosehead_61 (CZ6),

Start 29:

- Found in 1 of 29 (3.4%) of genes in pham
- Manual Annotations of this start: 1 of 25
- Called 100.0% of time when present
- Phage (with cluster) where this start called: Easley_56 (CZ4),

Start 37:

- Found in 2 of 29 (6.9%) of genes in pham
- Manual Annotations of this start: 1 of 25
- Called 100.0% of time when present
- Phage (with cluster) where this start called: InLimbo_58 (DH), Morkie_61 (DH),

Start 38:

- Found in 1 of 29 (3.4%) of genes in pham
- Manual Annotations of this start: 1 of 25
- Called 100.0% of time when present
- Phage (with cluster) where this start called: PhorbesPhlower_59 (DH),

Summary by clusters:

There are 15 clusters represented in this pham: DN, CY2, singleton, CY5, DH, CZ2, DB, DE2, CZ1, CZ6, CZ4, DN2, DW, CZ3, DT,

Info for manual annotations of cluster CY2:

- Start number 21 was manually annotated 1 time for cluster CY2.

Info for manual annotations of cluster CY5:

- Start number 21 was manually annotated 1 time for cluster CY5.

Info for manual annotations of cluster CZ1:

- Start number 21 was manually annotated 3 times for cluster CZ1.

Info for manual annotations of cluster CZ2:

- Start number 21 was manually annotated 3 times for cluster CZ2.

Info for manual annotations of cluster CZ3:

- Start number 21 was manually annotated 1 time for cluster CZ3.

Info for manual annotations of cluster CZ4:

- Start number 21 was manually annotated 3 times for cluster CZ4.
- Start number 29 was manually annotated 1 time for cluster CZ4.

Info for manual annotations of cluster CZ6:

- Start number 20 was manually annotated 1 time for cluster CZ6.
- Start number 22 was manually annotated 1 time for cluster CZ6.

Info for manual annotations of cluster DB:

- Start number 21 was manually annotated 2 times for cluster DB.

Info for manual annotations of cluster DE2:

- Start number 21 was manually annotated 1 time for cluster DE2.

Info for manual annotations of cluster DH:

- Start number 37 was manually annotated 1 time for cluster DH.
- Start number 38 was manually annotated 1 time for cluster DH.

Info for manual annotations of cluster DN:

- Start number 21 was manually annotated 1 time for cluster DN.

Info for manual annotations of cluster DN2:

- Start number 20 was manually annotated 1 time for cluster DN2.
- Start number 21 was manually annotated 1 time for cluster DN2.

Info for manual annotations of cluster DT:

- Start number 21 was manually annotated 1 time for cluster DT.

Gene Information:

Gene: AlumE_63 Start: 43761, Stop: 44207, Start Num: 21

Candidate Starts for AlumE_63:

(Start: 21 @43761 has 19 MA's), (Start: 22 @43773 has 1 MA's), (25, 43830), (35, 43893), (36, 43899), (53, 44019), (55, 44046), (58, 44079),

Gene: BaxterFox_63 Start: 43693, Stop: 44139, Start Num: 21

Candidate Starts for BaxterFox_63:

(Start: 21 @43693 has 19 MA's), (Start: 22 @43705 has 1 MA's), (25, 43762), (35, 43825), (53, 43951), (55, 43978), (58, 44011),

Gene: BeeGee_67 Start: 43650, Stop: 44045, Start Num: 21

Candidate Starts for BeeGee_67:

(Start: 21 @43650 has 19 MA's), (Start: 22 @43662 has 1 MA's), (53, 43860), (55, 43887), (58, 43920), (63, 43953),

Gene: Belphegor_71 Start: 54528, Stop: 54860, Start Num: 21

Candidate Starts for Belphegor_71:

(17, 54504), (Start: 21 @54528 has 19 MA's), (Start: 22 @54540 has 1 MA's), (33, 54636), (49, 54720),

Gene: Bowser_52 Start: 37812, Stop: 38210, Start Num: 21

Candidate Starts for Bowser_52:

(Start: 21 @37812 has 19 MA's), (34, 37914), (46, 37974), (53, 38022), (58, 38082),

Gene: BoyNamedSue_63 Start: 43761, Stop: 44207, Start Num: 21

Candidate Starts for BoyNamedSue_63:

(Start: 21 @43761 has 19 MA's), (Start: 22 @43773 has 1 MA's), (25, 43830), (35, 43893), (36, 43899), (53, 44019), (55, 44046), (58, 44079),

Gene: BritBrat_74 Start: 46520, Stop: 46924, Start Num: 21

Candidate Starts for BritBrat_74:

(Start: 21 @46520 has 19 MA's), (Start: 22 @46532 has 1 MA's), (39, 46631),

Gene: Clark_61 Start: 40299, Stop: 40820, Start Num: 21

Candidate Starts for Clark_61:

(16, 40254), (Start: 21 @40299 has 19 MA's), (Start: 22 @40311 has 1 MA's), (32, 40419), (45, 40494), (52, 40560), (57, 40623), (66, 40686), (75, 40800),

Gene: Easley_56 Start: 39021, Stop: 39443, Start Num: 29

Candidate Starts for Easley_56:

(13, 38835), (23, 38967), (27, 39015), (Start: 29 @39021 has 1 MA's), (31, 39033), (59, 39240), (60, 39246), (61, 39249), (65, 39291), (67, 39297), (73, 39342), (76, 39399), (77, 39411),

Gene: Eyes_51 Start: 37775, Stop: 38227, Start Num: 21

Candidate Starts for Eyes_51:

(Start: 21 @37775 has 19 MA's), (Start: 22 @37787 has 1 MA's), (35, 37907), (53, 38033), (55, 38060), (58, 38093),

Gene: Faith5x5_56 Start: 35249, Stop: 35653, Start Num: 20

Candidate Starts for Faith5x5_56:

(10, 35126), (15, 35198), (Start: 20 @35249 has 2 MA's), (Start: 22 @35264 has 1 MA's), (54, 35471), (61, 35516), (66, 35558),

Gene: GAL1_62 Start: 40466, Stop: 40969, Start Num: 21

Candidate Starts for GAL1_62:

(14, 40409), (Start: 21 @40466 has 19 MA's), (Start: 22 @40478 has 1 MA's), (51, 40727), (66, 40850),

Gene: Gudmit_53 Start: 33127, Stop: 33576, Start Num: 21

Candidate Starts for Gudmit_53:

(6, 32938), (10, 33001), (Start: 21 @33127 has 19 MA's), (Start: 22 @33139 has 1 MA's), (26, 33190), (44, 33280), (55, 33388), (62, 33433), (66, 33469), (68, 33478), (70, 33490), (71, 33493), (72, 33496), (74, 33508),

Gene: Hyzer_70 Start: 46534, Stop: 46980, Start Num: 21

Candidate Starts for Hyzer_70:

(18, 46522), (Start: 21 @46534 has 19 MA's), (Start: 22 @46546 has 1 MA's), (35, 46666), (53, 46792), (55, 46819),

Gene: InLimbo_58 Start: 36354, Stop: 36653, Start Num: 37

Candidate Starts for InLimbo_58:

(Start: 37 @36354 has 1 MA's), (40, 36369), (48, 36417),

Gene: Invectra_64 Start: 41872, Stop: 42393, Start Num: 21

Candidate Starts for Invectra_64:

(16, 41827), (Start: 21 @41872 has 19 MA's), (Start: 22 @41884 has 1 MA's), (32, 41992), (45, 42067), (52, 42133), (57, 42196), (66, 42259), (75, 42373),

Gene: JCole_55 Start: 36521, Stop: 36916, Start Num: 21

Candidate Starts for JCole_55:

(Start: 21 @36521 has 19 MA's), (Start: 22 @36533 has 1 MA's), (53, 36731), (55, 36758), (58, 36791), (63, 36824),

Gene: Malisha_82 Start: 49477, Stop: 49902, Start Num: 21

Candidate Starts for Malisha_82:

(17, 49453), (19, 49474), (Start: 21 @49477 has 19 MA's), (Start: 22 @49489 has 1 MA's), (33, 49585), (49, 49669), (50, 49672), (66, 49807), (68, 49816),

Gene: Matteo_51 Start: 35221, Stop: 35715, Start Num: 21

Candidate Starts for Matteo_51:

(18, 35209), (Start: 21 @35221 has 19 MA's), (Start: 22 @35233 has 1 MA's), (30, 35335), (41, 35389), (56, 35491), (62, 35530), (64, 35542), (78, 35677),

Gene: Moosehead_61 Start: 35551, Stop: 35901, Start Num: 22

Candidate Starts for Moosehead_61:

(8, 35386), (11, 35422), (12, 35428), (Start: 21 @35539 has 19 MA's), (Start: 22 @35551 has 1 MA's), (47, 35704), (66, 35809),

Gene: Morkie_61 Start: 36828, Stop: 37127, Start Num: 37

Candidate Starts for Morkie_61:

(Start: 37 @36828 has 1 MA's), (40, 36843), (48, 36891),

Gene: Nyceirae_3 Start: 430, Stop: 828, Start Num: 21

Candidate Starts for Nyceirae_3:

(Start: 21 @430 has 19 MA's), (Start: 22 @442 has 1 MA's), (53, 640), (55, 667), (63, 733), (69, 787),

Gene: PhorbesPhlower_59 Start: 36024, Stop: 36320, Start Num: 38

Candidate Starts for PhorbesPhlower_59:

(1, 35259), (2, 35391), (3, 35424), (4, 35517), (5, 35712), (7, 35739), (9, 35775), (12, 35796), (Start: 38 @36024 has 1 MA's), (40, 36036), (48, 36084),

Gene: Rizz_62 Start: 41085, Stop: 41609, Start Num: 21

Candidate Starts for Rizz_62:

(16, 41040), (Start: 21 @41085 has 19 MA's), (Start: 22 @41097 has 1 MA's), (24, 41148), (45, 41283), (52, 41349), (57, 41412), (66, 41475), (75, 41589),

Gene: Samman98_62 Start: 40402, Stop: 40923, Start Num: 21

Candidate Starts for Samman98_62:

(16, 40357), (Start: 21 @40402 has 19 MA's), (Start: 22 @40414 has 1 MA's), (32, 40522), (45, 40597), (52, 40663), (57, 40726), (66, 40789), (75, 40903),

Gene: Spooky_82 Start: 46716, Stop: 47147, Start Num: 21

Candidate Starts for Spooky_82:

(16, 46671), (Start: 21 @46716 has 19 MA's), (Start: 22 @46728 has 1 MA's), (28, 46800), (42, 46857), (43, 46860), (51, 46929), (66, 47052),

Gene: Sprinklemunch_71 Start: 46572, Stop: 46919, Start Num: 21

Candidate Starts for Sprinklemunch_71:

(Start: 21 @46572 has 19 MA's), (30, 46680),

Gene: Squiddly_81 Start: 49110, Stop: 49445, Start Num: 20

Candidate Starts for Squiddly_81:

(Start: 20 @49110 has 2 MA's), (Start: 22 @49125 has 1 MA's), (33, 49221), (49, 49305), (50, 49308),

Gene: Yeet412_56 Start: 38738, Stop: 39133, Start Num: 21

Candidate Starts for Yeet412_56:

(Start: 21 @38738 has 19 MA's), (Start: 22 @38750 has 1 MA's), (53, 38948), (55, 38975), (58, 39008), (63, 39041),