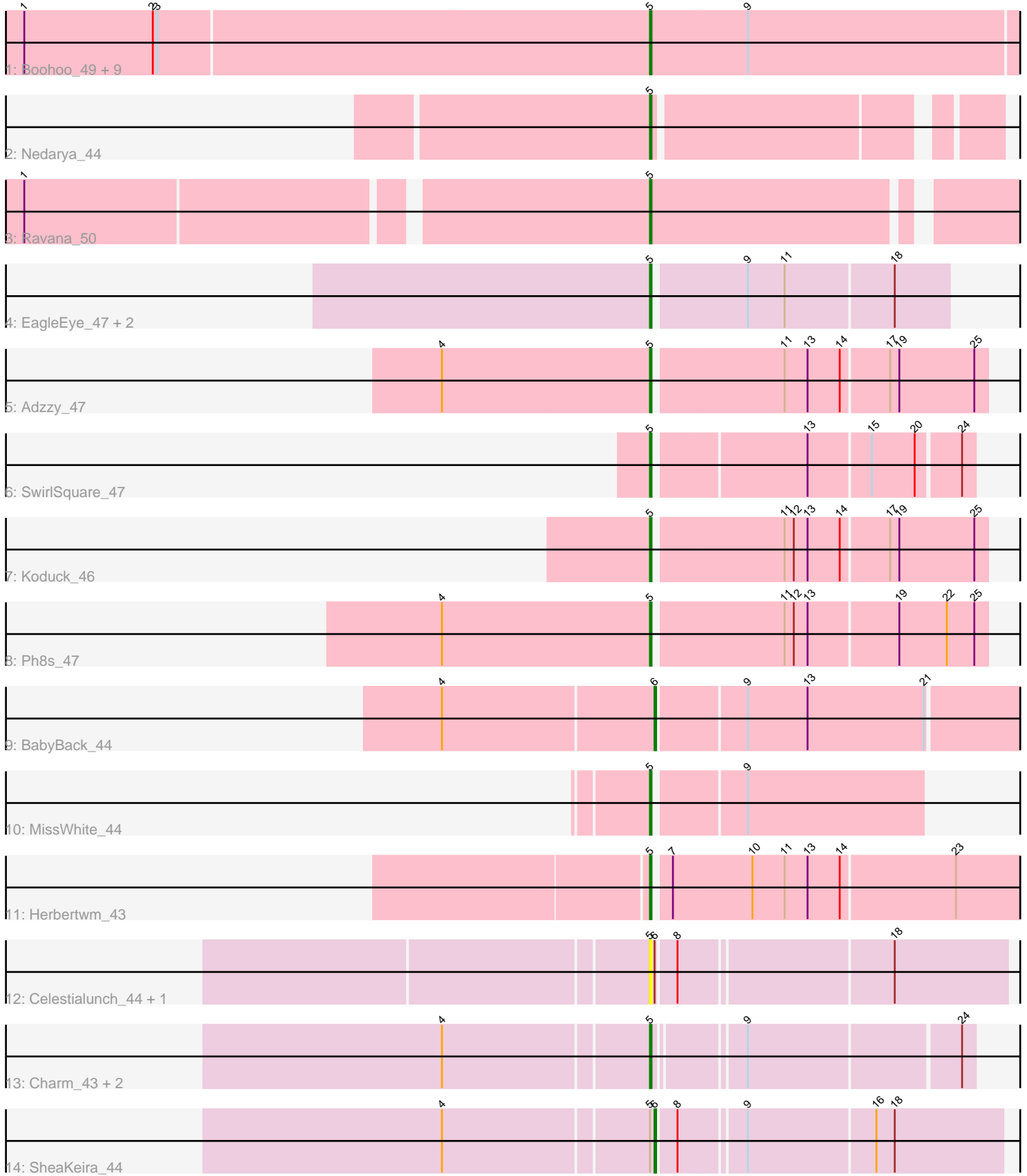


Pham 311900



Note: Tracks are now grouped by subcluster and scaled. Switching in subcluster is indicated by changes in track color. Track scale is now set by default to display the region 30 bp upstream of start 1 to 30 bp downstream of the last possible start. If this default region is judged to be packed too tightly with annotated starts, the track will be further scaled to only show that region of the ORF with annotated starts. This action will be indicated by adding "Zoomed" to the title. For starts, yellow indicates the location of called starts comprised solely of Glimmer/GeneMark auto-annotations, green indicates the location of called starts with at least 1 manual gene annotation.

## Pham 311900 Report

This analysis was run 06/27/26 on database version 652.

Pham number 311900 has 28 members, 3 are drafts.

Phages represented in each track:

- Track 1 : Boohoo\_49, DekHockey33\_49, Soups\_49, KatherineG\_50, Anaysia\_49, LastResort\_48, ShayRa\_50, Looper\_49, ReMo\_48, Nebulosus\_48
- Track 2 : Nedarya\_44
- Track 3 : Ravana\_50
- Track 4 : EagleEye\_47, Lucyedi\_46, PainterBoy\_46
- Track 5 : Adzzy\_47
- Track 6 : SwirlSquare\_47
- Track 7 : Koduck\_46
- Track 8 : Ph8s\_47
- Track 9 : BabyBack\_44
- Track 10 : MissWhite\_44
- Track 11 : Herbertwm\_43
- Track 12 : Celestiallunch\_44, MegTheThird\_44
- Track 13 : Charm\_43, DreamTeam1\_43, Klodlith\_44
- Track 14 : SheaKeira\_44

### ***Summary of Final Annotations (See graph section above for start numbers):***

The start number called the most often in the published annotations is 5, it was called in 23 of the 25 non-draft genes in the pham.

Genes that call this "Most Annotated" start:

- Adzzy\_47, Anaysia\_49, Boohoo\_49, Celestiallunch\_44, Charm\_43, DekHockey33\_49, DreamTeam1\_43, EagleEye\_47, Herbertwm\_43, KatherineG\_50, Klodlith\_44, Koduck\_46, LastResort\_48, Looper\_49, Lucyedi\_46, MegTheThird\_44, MissWhite\_44, Nebulosus\_48, Nedarya\_44, PainterBoy\_46, Ph8s\_47, Ravana\_50, ReMo\_48, ShayRa\_50, Soups\_49, SwirlSquare\_47,

Genes that have the "Most Annotated" start but do not call it:

- SheaKeira\_44,

Genes that do not have the "Most Annotated" start:

- BabyBack\_44,

## Summary by start number:

### Start 5:

- Found in 27 of 28 ( 96.4% ) of genes in pham
- Manual Annotations of this start: 23 of 25
- Called 96.3% of time when present
- Phage (with cluster) where this start called: Adzzy\_47 (A2), Anaysia\_49 (A15), Boohoo\_49 (A15), Celestialunch\_44 (A9), Charm\_43 (A9), DekHockey33\_49 (A15), DreamTeam1\_43 (A9), EagleEye\_47 (A16), Herbertwm\_43 (A2), KatherineG\_50 (A15), Klodlith\_44 (A9), Koduck\_46 (A2), LastResort\_48 (A15), Looper\_49 (A15), Lucyedi\_46 (A16), MegTheThird\_44 (A9), MissWhite\_44 (A2), Nebulosus\_48 (A15), Nedarya\_44 (A15), PainterBoy\_46 (A16), Ph8s\_47 (A2), Ravana\_50 (A15), ReMo\_48 (A15), ShayRa\_50 (A15), Soups\_49 (A15), SwiriSquare\_47 (A2),

### Start 6:

- Found in 4 of 28 ( 14.3% ) of genes in pham
- Manual Annotations of this start: 2 of 25
- Called 50.0% of time when present
- Phage (with cluster) where this start called: BabyBack\_44 (A2), SheaKeira\_44 (A9),

## Summary by clusters:

There are 4 clusters represented in this pham: A15, A9, A2, A16,

Info for manual annotations of cluster A15:

- Start number 5 was manually annotated 12 times for cluster A15.

Info for manual annotations of cluster A16:

- Start number 5 was manually annotated 3 times for cluster A16.

Info for manual annotations of cluster A2:

- Start number 5 was manually annotated 6 times for cluster A2.
- Start number 6 was manually annotated 1 time for cluster A2.

Info for manual annotations of cluster A9:

- Start number 5 was manually annotated 2 times for cluster A9.
- Start number 6 was manually annotated 1 time for cluster A9.

## Gene Information:

Gene: Adzzy\_47 Start: 30308, Stop: 30099, Start Num: 5

Candidate Starts for Adzzy\_47:

(4, 30443), (Start: 5 @30308 has 23 MA's), (11, 30227), (13, 30212), (14, 30191), (17, 30161), (19, 30155), (25, 30107),

Gene: Anaysia\_49 Start: 30563, Stop: 30327, Start Num: 5

Candidate Starts for Anaysia\_49:

(1, 30968), (2, 30884), (3, 30881), (Start: 5 @30563 has 23 MA's), (9, 30500),

Gene: BabyBack\_44 Start: 32081, Stop: 31851, Start Num: 6

Candidate Starts for BabyBack\_44:

(4, 32216), (Start: 6 @32081 has 2 MA's), (9, 32027), (13, 31988), (21, 31913),

Gene: Boohoo\_49 Start: 30563, Stop: 30327, Start Num: 5

Candidate Starts for Boohoo\_49:

(1, 30968), (2, 30884), (3, 30881), (Start: 5 @30563 has 23 MA's), (9, 30500),

Gene: Celestiallunch\_44 Start: 31007, Stop: 30789, Start Num: 5

Candidate Starts for Celestiallunch\_44:

(Start: 5 @31007 has 23 MA's), (Start: 6 @31004 has 2 MA's), (8, 30992), (18, 30860),

Gene: Charm\_43 Start: 31035, Stop: 30844, Start Num: 5

Candidate Starts for Charm\_43:

(4, 31164), (Start: 5 @31035 has 23 MA's), (9, 30984), (24, 30852),

Gene: DekHockey33\_49 Start: 30778, Stop: 30542, Start Num: 5

Candidate Starts for DekHockey33\_49:

(1, 31183), (2, 31099), (3, 31096), (Start: 5 @30778 has 23 MA's), (9, 30715),

Gene: DreamTeam1\_43 Start: 30909, Stop: 30718, Start Num: 5

Candidate Starts for DreamTeam1\_43:

(4, 31038), (Start: 5 @30909 has 23 MA's), (9, 30858), (24, 30726),

Gene: EagleEye\_47 Start: 30973, Stop: 30788, Start Num: 5

Candidate Starts for EagleEye\_47:

(Start: 5 @30973 has 23 MA's), (9, 30916), (11, 30892), (18, 30823),

Gene: Herbertwm\_43 Start: 30942, Stop: 30700, Start Num: 5

Candidate Starts for Herbertwm\_43:

(Start: 5 @30942 has 23 MA's), (7, 30933), (10, 30882), (11, 30861), (13, 30846), (14, 30825), (23, 30753),

Gene: KatherineG\_50 Start: 30778, Stop: 30542, Start Num: 5

Candidate Starts for KatherineG\_50:

(1, 31183), (2, 31099), (3, 31096), (Start: 5 @30778 has 23 MA's), (9, 30715),

Gene: Klodlith\_44 Start: 30926, Stop: 30735, Start Num: 5

Candidate Starts for Klodlith\_44:

(4, 31055), (Start: 5 @30926 has 23 MA's), (9, 30875), (24, 30743),

Gene: Koduck\_46 Start: 30554, Stop: 30345, Start Num: 5

Candidate Starts for Koduck\_46:

(Start: 5 @30554 has 23 MA's), (11, 30473), (12, 30467), (13, 30458), (14, 30437), (17, 30407), (19, 30401), (25, 30353),

Gene: LastResort\_48 Start: 30339, Stop: 30103, Start Num: 5

Candidate Starts for LastResort\_48:

(1, 30744), (2, 30660), (3, 30657), (Start: 5 @30339 has 23 MA's), (9, 30276),

Gene: Looper\_49 Start: 30316, Stop: 30080, Start Num: 5

Candidate Starts for Looper\_49:

(1, 30721), (2, 30637), (3, 30634), (Start: 5 @30316 has 23 MA's), (9, 30253),

Gene: Lucyedi\_46 Start: 31168, Stop: 30983, Start Num: 5

Candidate Starts for Lucyedi\_46:  
(Start: 5 @31168 has 23 MA's), (9, 31111), (11, 31087), (18, 31018),

Gene: MegTheThird\_44 Start: 31006, Stop: 30788, Start Num: 5  
Candidate Starts for MegTheThird\_44:  
(Start: 5 @31006 has 23 MA's), (Start: 6 @31003 has 2 MA's), (8, 30991), (18, 30859),

Gene: MissWhite\_44 Start: 29921, Stop: 29754, Start Num: 5  
Candidate Starts for MissWhite\_44:  
(Start: 5 @29921 has 23 MA's), (9, 29867),

Gene: Nebulosus\_48 Start: 30335, Stop: 30099, Start Num: 5  
Candidate Starts for Nebulosus\_48:  
(1, 30740), (2, 30656), (3, 30653), (Start: 5 @30335 has 23 MA's), (9, 30272),

Gene: Nedarya\_44 Start: 29716, Stop: 29513, Start Num: 5  
Candidate Starts for Nedarya\_44:  
(Start: 5 @29716 has 23 MA's),

Gene: PainterBoy\_46 Start: 31104, Stop: 30919, Start Num: 5  
Candidate Starts for PainterBoy\_46:  
(Start: 5 @31104 has 23 MA's), (9, 31047), (11, 31023), (18, 30954),

Gene: Ph8s\_47 Start: 30743, Stop: 30534, Start Num: 5  
Candidate Starts for Ph8s\_47:  
(4, 30878), (Start: 5 @30743 has 23 MA's), (11, 30662), (12, 30656), (13, 30647), (19, 30590), (22, 30560), (25, 30542),

Gene: Ravana\_50 Start: 30946, Stop: 30728, Start Num: 5  
Candidate Starts for Ravana\_50:  
(1, 31333), (Start: 5 @30946 has 23 MA's),

Gene: ReMo\_48 Start: 30336, Stop: 30100, Start Num: 5  
Candidate Starts for ReMo\_48:  
(1, 30741), (2, 30657), (3, 30654), (Start: 5 @30336 has 23 MA's), (9, 30273),

Gene: ShayRa\_50 Start: 30540, Stop: 30304, Start Num: 5  
Candidate Starts for ShayRa\_50:  
(1, 30945), (2, 30861), (3, 30858), (Start: 5 @30540 has 23 MA's), (9, 30477),

Gene: SheaKeira\_44 Start: 31011, Stop: 30799, Start Num: 6  
Candidate Starts for SheaKeira\_44:  
(4, 31143), (Start: 5 @31014 has 23 MA's), (Start: 6 @31011 has 2 MA's), (8, 30999), (9, 30960), (16, 30879), (18, 30867),

Gene: Soups\_49 Start: 30539, Stop: 30303, Start Num: 5  
Candidate Starts for Soups\_49:  
(1, 30944), (2, 30860), (3, 30857), (Start: 5 @30539 has 23 MA's), (9, 30476),

Gene: SwirlSquare\_47 Start: 30451, Stop: 30257, Start Num: 5  
Candidate Starts for SwirlSquare\_47:  
(Start: 5 @30451 has 23 MA's), (13, 30358), (15, 30319), (20, 30292), (24, 30265),