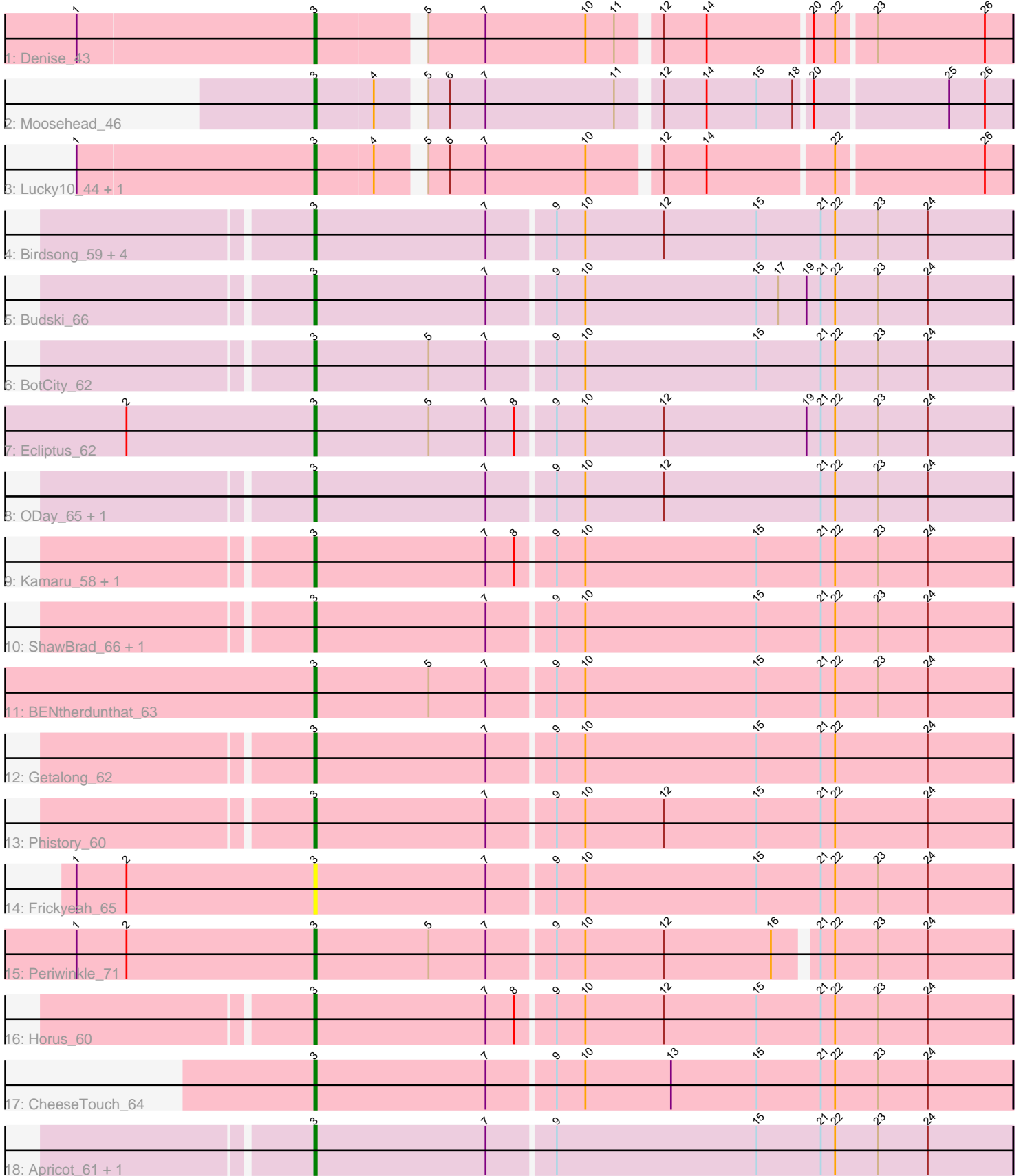


# Pham 311919



Note: Tracks are now grouped by subcluster and scaled. Switching in subcluster is indicated by changes in track color. Track scale is now set by default to display the region 30 bp upstream of start 1 to 30 bp downstream of the last possible start. If this default region is judged to be packed too tightly with annotated starts, the track will be further scaled to only show that region of the ORF with annotated starts. This action will be indicated by adding "Zoomed" to the title. For starts, yellow indicates the location of called starts comprised solely of Glimmer/GeneMark auto-annotations, green indicates the location of called starts with at least 1 manual gene annotation.

## Pham 311919 Report

This analysis was run 06/27/26 on database version 652.

Pham number 311919 has 27 members, 2 are drafts.

Phages represented in each track:

- Track 1 : Denise\_43
- Track 2 : Moosehead\_46
- Track 3 : Lucky10\_44, Lton\_43
- Track 4 : Birdsong\_59, Asapag\_59, Phabuloso\_61, Kenna\_59, Lutum\_64
- Track 5 : Budski\_66
- Track 6 : BotCity\_62
- Track 7 : Ecliptus\_62
- Track 8 : ODay\_65, Holliday\_62
- Track 9 : Kamaru\_58, LitninMcQueen\_57
- Track 10 : ShawBrad\_66, Leroy\_61
- Track 11 : BENtherdunthat\_63
- Track 12 : Getalong\_62
- Track 13 : Phistory\_60
- Track 14 : Frickyeah\_65
- Track 15 : Periwinkle\_71
- Track 16 : Horus\_60
- Track 17 : CheeseTouch\_64
- Track 18 : Apricot\_61, Crater\_61

### ***Summary of Final Annotations (See graph section above for start numbers):***

The start number called the most often in the published annotations is 3, it was called in 25 of the 25 non-draft genes in the pham.

Genes that call this "Most Annotated" start:

- Apricot\_61, Asapag\_59, BENtherdunthat\_63, Birdsong\_59, BotCity\_62, Budski\_66, CheeseTouch\_64, Crater\_61, Denise\_43, Ecliptus\_62, Frickyeah\_65, Getalong\_62, Holliday\_62, Horus\_60, Kamaru\_58, Kenna\_59, Leroy\_61, LitninMcQueen\_57, Lton\_43, Lucky10\_44, Lutum\_64, Moosehead\_46, ODay\_65, Periwinkle\_71, Phabuloso\_61, Phistory\_60, ShawBrad\_66,

Genes that have the "Most Annotated" start but do not call it:

-

Genes that do not have the "Most Annotated" start:

- 

### Summary by start number:

Start 3:

- Found in 27 of 27 ( 100.0% ) of genes in pham
- Manual Annotations of this start: 25 of 25
- Called 100.0% of time when present
- Phage (with cluster) where this start called: Apricot\_61 (DN3), Asapag\_59 (DN1), BENTherdunthat\_63 (DN1), Birdsong\_59 (DN), BotCity\_62 (DN), Budski\_66 (DN), CheeseTouch\_64 (DN1), Crater\_61 (DN3), Denise\_43 (CZ5), Ecliptus\_62 (DN), Frickyeah\_65 (DN1), Getalong\_62 (DN1), Holliday\_62 (DN1), Horus\_60 (DN1), Kamaru\_58 (DN1), Kenna\_59 (DN1), Leroy\_61 (DN1), LitninMcQueen\_57 (DN1), Lton\_43 (CZ), Lucky10\_44 (DH), Lutum\_64 (DN1), Moosehead\_46 (CZ6), ODay\_65 (DN), Periwinkle\_71 (DN1), Phabuloso\_61 (DN1), Phistory\_60 (DN1), ShawBrad\_66 (DN1),

### Summary by clusters:

There are 7 clusters represented in this pham: DN, DH, CZ6, CZ5, CZ, DN1, DN3,

Info for manual annotations of cluster CZ:

- Start number 3 was manually annotated 1 time for cluster CZ.

Info for manual annotations of cluster CZ5:

- Start number 3 was manually annotated 1 time for cluster CZ5.

Info for manual annotations of cluster CZ6:

- Start number 3 was manually annotated 1 time for cluster CZ6.

Info for manual annotations of cluster DH:

- Start number 3 was manually annotated 1 time for cluster DH.

Info for manual annotations of cluster DN:

- Start number 3 was manually annotated 5 times for cluster DN.

Info for manual annotations of cluster DN1:

- Start number 3 was manually annotated 14 times for cluster DN1.

Info for manual annotations of cluster DN3:

- Start number 3 was manually annotated 2 times for cluster DN3.

### Gene Information:

Gene: Apricot\_61 Start: 38500, Stop: 38790, Start Num: 3

Candidate Starts for Apricot\_61:

(Start: 3 @38500 has 25 MA's), (7, 38572), (9, 38599), (15, 38683), (21, 38710), (22, 38716), (23, 38734), (24, 38755),

Gene: Asapag\_59 Start: 38078, Stop: 38368, Start Num: 3

Candidate Starts for Asapag\_59:

(Start: 3 @38078 has 25 MA's), (7, 38150), (9, 38177), (10, 38189), (12, 38222), (15, 38261), (21, 38288), (22, 38294), (23, 38312), (24, 38333),

Gene: BENtherdunthat\_63 Start: 39358, Stop: 39648, Start Num: 3

Candidate Starts for BENtherdunthat\_63:

(Start: 3 @39358 has 25 MA's), (5, 39406), (7, 39430), (9, 39457), (10, 39469), (15, 39541), (21, 39568), (22, 39574), (23, 39592), (24, 39613),

Gene: Birdsong\_59 Start: 38299, Stop: 38589, Start Num: 3

Candidate Starts for Birdsong\_59:

(Start: 3 @38299 has 25 MA's), (7, 38371), (9, 38398), (10, 38410), (12, 38443), (15, 38482), (21, 38509), (22, 38515), (23, 38533), (24, 38554),

Gene: BotCity\_62 Start: 39523, Stop: 39813, Start Num: 3

Candidate Starts for BotCity\_62:

(Start: 3 @39523 has 25 MA's), (5, 39571), (7, 39595), (9, 39622), (10, 39634), (15, 39706), (21, 39733), (22, 39739), (23, 39757), (24, 39778),

Gene: Budski\_66 Start: 40486, Stop: 40776, Start Num: 3

Candidate Starts for Budski\_66:

(Start: 3 @40486 has 25 MA's), (7, 40558), (9, 40585), (10, 40597), (15, 40669), (17, 40678), (19, 40690), (21, 40696), (22, 40702), (23, 40720), (24, 40741),

Gene: CheeseTouch\_64 Start: 35768, Stop: 36058, Start Num: 3

Candidate Starts for CheeseTouch\_64:

(Start: 3 @35768 has 25 MA's), (7, 35840), (9, 35867), (10, 35879), (13, 35915), (15, 35951), (21, 35978), (22, 35984), (23, 36002), (24, 36023),

Gene: Crater\_61 Start: 38895, Stop: 39185, Start Num: 3

Candidate Starts for Crater\_61:

(Start: 3 @38895 has 25 MA's), (7, 38967), (9, 38994), (15, 39078), (21, 39105), (22, 39111), (23, 39129), (24, 39150),

Gene: Denise\_43 Start: 32043, Stop: 32315, Start Num: 3

Candidate Starts for Denise\_43:

(1, 31944), (Start: 3 @32043 has 25 MA's), (5, 32082), (7, 32106), (10, 32148), (11, 32160), (12, 32175), (14, 32193), (20, 32235), (22, 32244), (23, 32259), (26, 32304),

Gene: Ecliptus\_62 Start: 40698, Stop: 40988, Start Num: 3

Candidate Starts for Ecliptus\_62:

(2, 40620), (Start: 3 @40698 has 25 MA's), (5, 40746), (7, 40770), (8, 40782), (9, 40797), (10, 40809), (12, 40842), (19, 40902), (21, 40908), (22, 40914), (23, 40932), (24, 40953),

Gene: Frickyeah\_65 Start: 38765, Stop: 39055, Start Num: 3

Candidate Starts for Frickyeah\_65:

(1, 38666), (2, 38687), (Start: 3 @38765 has 25 MA's), (7, 38837), (9, 38864), (10, 38876), (15, 38948), (21, 38975), (22, 38981), (23, 38999), (24, 39020),

Gene: Getalong\_62 Start: 40330, Stop: 40620, Start Num: 3

Candidate Starts for Getalong\_62:

(Start: 3 @40330 has 25 MA's), (7, 40402), (9, 40429), (10, 40441), (15, 40513), (21, 40540), (22, 40546), (24, 40585),

Gene: Holliday\_62 Start: 40065, Stop: 40355, Start Num: 3

Candidate Starts for Holliday\_62:

(Start: 3 @40065 has 25 MA's), (7, 40137), (9, 40164), (10, 40176), (12, 40209), (21, 40275), (22, 40281), (23, 40299), (24, 40320),

Gene: Horus\_60 Start: 39454, Stop: 39744, Start Num: 3

Candidate Starts for Horus\_60:

(Start: 3 @39454 has 25 MA's), (7, 39526), (8, 39538), (9, 39553), (10, 39565), (12, 39598), (15, 39637), (21, 39664), (22, 39670), (23, 39688), (24, 39709),

Gene: Kamaru\_58 Start: 38562, Stop: 38852, Start Num: 3

Candidate Starts for Kamaru\_58:

(Start: 3 @38562 has 25 MA's), (7, 38634), (8, 38646), (9, 38661), (10, 38673), (15, 38745), (21, 38772), (22, 38778), (23, 38796), (24, 38817),

Gene: Kenna\_59 Start: 38531, Stop: 38821, Start Num: 3

Candidate Starts for Kenna\_59:

(Start: 3 @38531 has 25 MA's), (7, 38603), (9, 38630), (10, 38642), (12, 38675), (15, 38714), (21, 38741), (22, 38747), (23, 38765), (24, 38786),

Gene: Leroy\_61 Start: 38831, Stop: 39121, Start Num: 3

Candidate Starts for Leroy\_61:

(Start: 3 @38831 has 25 MA's), (7, 38903), (9, 38930), (10, 38942), (15, 39014), (21, 39041), (22, 39047), (23, 39065), (24, 39086),

Gene: LitninMcQueen\_57 Start: 38309, Stop: 38599, Start Num: 3

Candidate Starts for LitninMcQueen\_57:

(Start: 3 @38309 has 25 MA's), (7, 38381), (8, 38393), (9, 38408), (10, 38420), (15, 38492), (21, 38519), (22, 38525), (23, 38543), (24, 38564),

Gene: Lton\_43 Start: 29727, Stop: 29999, Start Num: 3

Candidate Starts for Lton\_43:

(1, 29628), (Start: 3 @29727 has 25 MA's), (4, 29751), (5, 29766), (6, 29775), (7, 29790), (10, 29832), (12, 29859), (14, 29877), (22, 29928), (26, 29988),

Gene: Lucky10\_44 Start: 32445, Stop: 32717, Start Num: 3

Candidate Starts for Lucky10\_44:

(1, 32346), (Start: 3 @32445 has 25 MA's), (4, 32469), (5, 32484), (6, 32493), (7, 32508), (10, 32550), (12, 32577), (14, 32595), (22, 32646), (26, 32706),

Gene: Lutum\_64 Start: 39695, Stop: 39985, Start Num: 3

Candidate Starts for Lutum\_64:

(Start: 3 @39695 has 25 MA's), (7, 39767), (9, 39794), (10, 39806), (12, 39839), (15, 39878), (21, 39905), (22, 39911), (23, 39929), (24, 39950),

Gene: Moosehead\_46 Start: 30660, Stop: 30932, Start Num: 3

Candidate Starts for Moosehead\_46:

(Start: 3 @30660 has 25 MA's), (4, 30684), (5, 30699), (6, 30708), (7, 30723), (11, 30777), (12, 30792), (14, 30810), (15, 30831), (18, 30846), (20, 30852), (25, 30906), (26, 30921),

Gene: ODay\_65 Start: 40735, Stop: 41025, Start Num: 3

Candidate Starts for ODay\_65:

(Start: 3 @40735 has 25 MA's), (7, 40807), (9, 40834), (10, 40846), (12, 40879), (21, 40945), (22, 40951), (23, 40969), (24, 40990),

Gene: Periwinkle\_71 Start: 42094, Stop: 42378, Start Num: 3

Candidate Starts for Periwinkle\_71:

(1, 41995), (2, 42016), (Start: 3 @42094 has 25 MA's), (5, 42142), (7, 42166), (9, 42193), (10, 42205), (12, 42238), (16, 42283), (21, 42298), (22, 42304), (23, 42322), (24, 42343),

Gene: Phabuloso\_61 Start: 38740, Stop: 39030, Start Num: 3

Candidate Starts for Phabuloso\_61:

(Start: 3 @38740 has 25 MA's), (7, 38812), (9, 38839), (10, 38851), (12, 38884), (15, 38923), (21, 38950), (22, 38956), (23, 38974), (24, 38995),

Gene: Phistory\_60 Start: 37994, Stop: 38284, Start Num: 3

Candidate Starts for Phistory\_60:

(Start: 3 @37994 has 25 MA's), (7, 38066), (9, 38093), (10, 38105), (12, 38138), (15, 38177), (21, 38204), (22, 38210), (24, 38249),

Gene: ShawBrad\_66 Start: 39157, Stop: 39447, Start Num: 3

Candidate Starts for ShawBrad\_66:

(Start: 3 @39157 has 25 MA's), (7, 39229), (9, 39256), (10, 39268), (15, 39340), (21, 39367), (22, 39373), (23, 39391), (24, 39412),