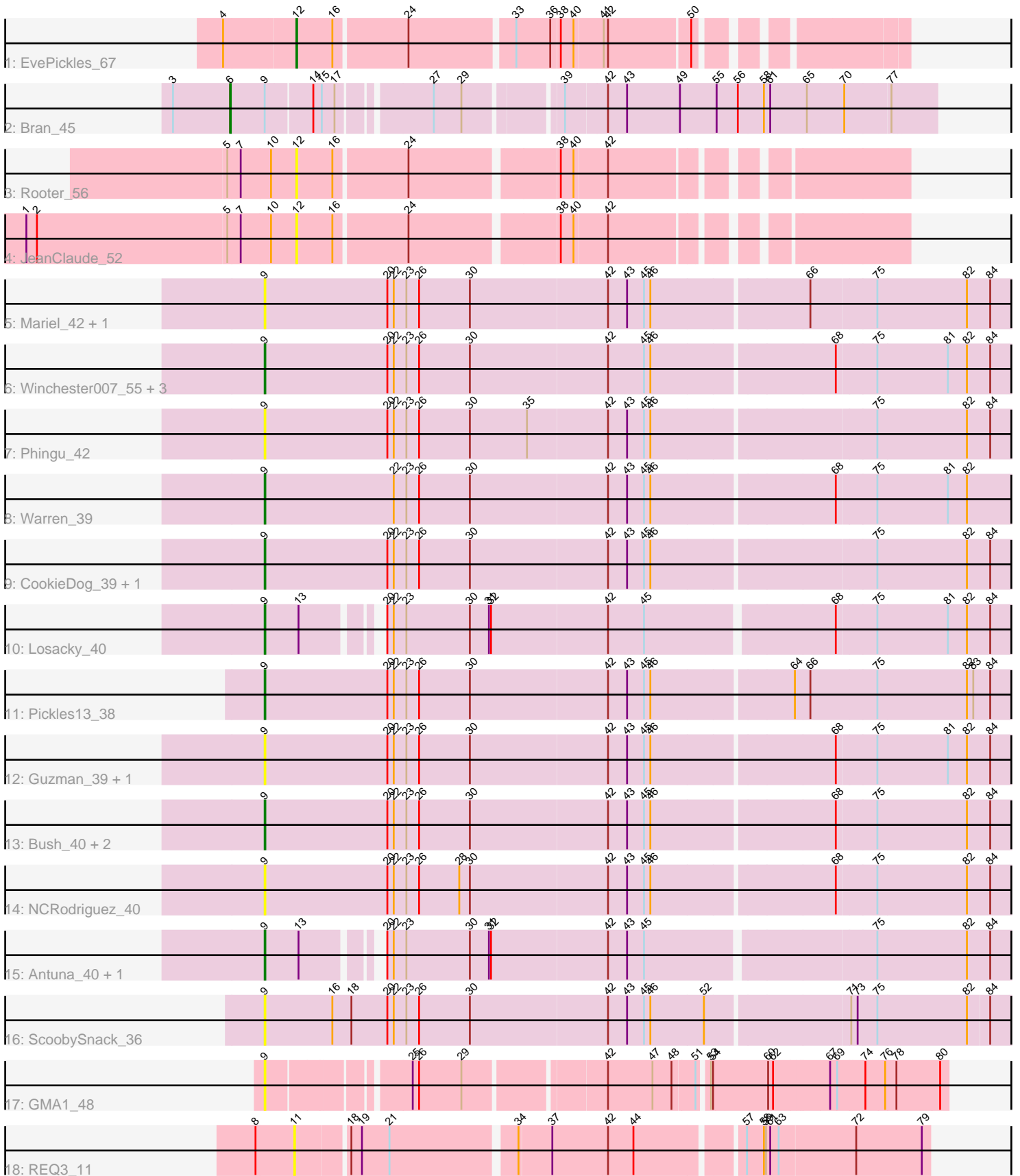


# Pham 311922



Note: Tracks are now grouped by subcluster and scaled. Switching in subcluster is indicated by changes in track color. Track scale is now set by default to display the region 30 bp upstream of start 1 to 30 bp downstream of the last possible start. If this default region is judged to be packed too tightly with annotated starts, the track will be further scaled to only show that region of the ORF with annotated starts. This action will be indicated by adding "Zoomed" to the title. For starts, yellow indicates the location of called starts comprised solely of Glimmer/GeneMark auto-annotations, green indicates the location of called starts with at least 1 manual gene annotation.

## Pham 311922 Report

This analysis was run 06/27/26 on database version 652.

Pham number 311922 has 27 members, 14 are drafts.

Phages represented in each track:

- Track 1 : EvePickles\_67
- Track 2 : Bran\_45
- Track 3 : Rooter\_56
- Track 4 : JeanClaude\_52
- Track 5 : Mariel\_42, Carrillo\_41
- Track 6 : Winchester007\_55, Dropshot\_39, PhillyJawn\_40, Appa\_39
- Track 7 : Phingu\_42
- Track 8 : Warren\_39
- Track 9 : CookieDog\_39, Violeta\_41
- Track 10 : Losacky\_40
- Track 11 : Pickles13\_38
- Track 12 : Guzman\_39, Jakelyne\_42
- Track 13 : Bush\_40, Phonegingi\_39, Blett\_39
- Track 14 : NCRodriguez\_40
- Track 15 : Antuna\_40, MenE\_40
- Track 16 : ScoobySnack\_36
- Track 17 : GMA1\_48
- Track 18 : REQ3\_11

### ***Summary of Final Annotations (See graph section above for start numbers):***

The start number called the most often in the published annotations is 9, it was called in 11 of the 13 non-draft genes in the pham.

Genes that call this "Most Annotated" start:

- Antuna\_40, Appa\_39, Blett\_39, Bush\_40, Carrillo\_41, CookieDog\_39, Dropshot\_39, GMA1\_48, Guzman\_39, Jakelyne\_42, Losacky\_40, Mariel\_42, MenE\_40, NCRodriguez\_40, PhillyJawn\_40, Phingu\_42, Phonegingi\_39, Pickles13\_38, ScoobySnack\_36, Violeta\_41, Warren\_39, Winchester007\_55,

Genes that have the "Most Annotated" start but do not call it:

- Bran\_45,

Genes that do not have the "Most Annotated" start:

- EvePickles\_67, JeanClaude\_52, REQ3\_11, Rooter\_56,

### Summary by start number:

#### Start 6:

- Found in 1 of 27 ( 3.7% ) of genes in pham
- Manual Annotations of this start: 1 of 13
- Called 100.0% of time when present
- Phage (with cluster) where this start called: Bran\_45 (EP),

#### Start 9:

- Found in 23 of 27 ( 85.2% ) of genes in pham
- Manual Annotations of this start: 11 of 13
- Called 95.7% of time when present
- Phage (with cluster) where this start called: Antuna\_40 (GA), Appa\_39 (GA), Blett\_39 (GA), Bush\_40 (GA), Carrillo\_41 (GA), CookieDog\_39 (GA), Dropshot\_39 (GA), GMA1\_48 (singleton), Guzman\_39 (GA), Jakelyne\_42 (GA), Losacky\_40 (GA), Mariel\_42 (GA), MenE\_40 (GA), NCRodriguez\_40 (GA), PhillyJawn\_40 (GA), Phingu\_42 (GA), Phonegingi\_39 (GA), Pickles13\_38 (GA), ScoobySnack\_36 (GA), Violeta\_41 (GA), Warren\_39 (GA), Winchester007\_55 (GA),

#### Start 11:

- Found in 1 of 27 ( 3.7% ) of genes in pham
- No Manual Annotations of this start.
- Called 100.0% of time when present
- Phage (with cluster) where this start called: REQ3\_11 (singleton),

#### Start 12:

- Found in 3 of 27 ( 11.1% ) of genes in pham
- Manual Annotations of this start: 1 of 13
- Called 100.0% of time when present
- Phage (with cluster) where this start called: EvePickles\_67 (AY), JeanClaude\_52 (FB), Rooter\_56 (FB),

### Summary by clusters:

There are 5 clusters represented in this pham: AY, FB, EP, GA, singleton,

Info for manual annotations of cluster AY:

- Start number 12 was manually annotated 1 time for cluster AY.

Info for manual annotations of cluster EP:

- Start number 6 was manually annotated 1 time for cluster EP.

Info for manual annotations of cluster GA:

- Start number 9 was manually annotated 11 times for cluster GA.

### Gene Information:

Gene: Antuna\_40 Start: 24339, Stop: 25343, Start Num: 9

Candidate Starts for Antuna\_40:

(Start: 9 @24339 has 11 MA's), (13, 24387), (20, 24474), (22, 24483), (23, 24501), (30, 24591), (31, 24618), (32, 24621), (42, 24783), (43, 24810), (45, 24834), (75, 25140), (82, 25266), (84, 25299),

Gene: Appa\_39 Start: 24216, Stop: 25265, Start Num: 9

Candidate Starts for Appa\_39:

(Start: 9 @24216 has 11 MA's), (20, 24390), (22, 24399), (23, 24417), (26, 24435), (30, 24507), (42, 24699), (45, 24750), (46, 24759), (68, 25008), (75, 25062), (81, 25161), (82, 25188), (84, 25221),

Gene: Blett\_39 Start: 24396, Stop: 25445, Start Num: 9

Candidate Starts for Blett\_39:

(Start: 9 @24396 has 11 MA's), (20, 24570), (22, 24579), (23, 24597), (26, 24615), (30, 24687), (42, 24879), (43, 24906), (45, 24930), (46, 24939), (68, 25188), (75, 25242), (82, 25368), (84, 25401),

Gene: Bran\_45 Start: 32430, Stop: 33353, Start Num: 6

Candidate Starts for Bran\_45:

(3, 32349), (Start: 6 @32430 has 1 MA's), (Start: 9 @32475 has 11 MA's), (14, 32538), (15, 32550), (17, 32568), (27, 32685), (29, 32724), (39, 32847), (42, 32904), (43, 32931), (49, 33006), (55, 33057), (56, 33087), (58, 33123), (61, 33132), (65, 33183), (70, 33234), (77, 33294),

Gene: Bush\_40 Start: 24344, Stop: 25393, Start Num: 9

Candidate Starts for Bush\_40:

(Start: 9 @24344 has 11 MA's), (20, 24518), (22, 24527), (23, 24545), (26, 24563), (30, 24635), (42, 24827), (43, 24854), (45, 24878), (46, 24887), (68, 25136), (75, 25190), (82, 25316), (84, 25349),

Gene: Carrillo\_41 Start: 24317, Stop: 25366, Start Num: 9

Candidate Starts for Carrillo\_41:

(Start: 9 @24317 has 11 MA's), (20, 24491), (22, 24500), (23, 24518), (26, 24536), (30, 24608), (42, 24800), (43, 24827), (45, 24851), (46, 24860), (66, 25073), (75, 25163), (82, 25289), (84, 25322),

Gene: CookieDog\_39 Start: 24317, Stop: 25366, Start Num: 9

Candidate Starts for CookieDog\_39:

(Start: 9 @24317 has 11 MA's), (20, 24491), (22, 24500), (23, 24518), (26, 24536), (30, 24608), (42, 24800), (43, 24827), (45, 24851), (46, 24860), (75, 25163), (82, 25289), (84, 25322),

Gene: Dropshot\_39 Start: 24051, Stop: 25100, Start Num: 9

Candidate Starts for Dropshot\_39:

(Start: 9 @24051 has 11 MA's), (20, 24225), (22, 24234), (23, 24252), (26, 24270), (30, 24342), (42, 24534), (45, 24585), (46, 24594), (68, 24843), (75, 24897), (81, 24996), (82, 25023), (84, 25056),

Gene: EvePickles\_67 Start: 37425, Stop: 38189, Start Num: 12

Candidate Starts for EvePickles\_67:

(4, 37329), (Start: 12 @37425 has 1 MA's), (16, 37476), (24, 37575), (33, 37716), (36, 37764), (38, 37776), (40, 37794), (41, 37833), (42, 37839), (50, 37950),

Gene: GMA1\_48 Start: 31243, Stop: 32121, Start Num: 9

Candidate Starts for GMA1\_48:

(Start: 9 @31243 has 11 MA's), (25, 31420), (26, 31429), (29, 31489), (42, 31672), (47, 31735), (48, 31762), (51, 31792), (53, 31804), (54, 31807), (60, 31882), (62, 31888), (67, 31963), (69, 31972), (74, 32008), (76, 32035), (78, 32050), (80, 32110),

Gene: Guzman\_39 Start: 24315, Stop: 25364, Start Num: 9

Candidate Starts for Guzman\_39:

(Start: 9 @24315 has 11 MA's), (20, 24489), (22, 24498), (23, 24516), (26, 24534), (30, 24606), (42, 24798), (43, 24825), (45, 24849), (46, 24858), (68, 25107), (75, 25161), (81, 25260), (82, 25287), (84, 25320),

Gene: Jakelyne\_42 Start: 24456, Stop: 25475, Start Num: 9

Candidate Starts for Jakelyne\_42:

(Start: 9 @24456 has 11 MA's), (20, 24630), (22, 24639), (23, 24657), (26, 24675), (30, 24747), (42, 24939), (43, 24966), (45, 24990), (46, 24999), (68, 25218), (75, 25272), (81, 25371), (82, 25398), (84, 25431),

Gene: JeanClaude\_52 Start: 28974, Stop: 29741, Start Num: 12

Candidate Starts for JeanClaude\_52:

(1, 28596), (2, 28611), (5, 28878), (7, 28896), (10, 28938), (Start: 12 @28974 has 1 MA's), (16, 29025), (24, 29124), (38, 29319), (40, 29337), (42, 29382),

Gene: Losacky\_40 Start: 24481, Stop: 25485, Start Num: 9

Candidate Starts for Losacky\_40:

(Start: 9 @24481 has 11 MA's), (13, 24529), (20, 24616), (22, 24625), (23, 24643), (30, 24733), (31, 24760), (32, 24763), (42, 24925), (45, 24976), (68, 25228), (75, 25282), (81, 25381), (82, 25408), (84, 25441),

Gene: Mariel\_42 Start: 24785, Stop: 25834, Start Num: 9

Candidate Starts for Mariel\_42:

(Start: 9 @24785 has 11 MA's), (20, 24959), (22, 24968), (23, 24986), (26, 25004), (30, 25076), (42, 25268), (43, 25295), (45, 25319), (46, 25328), (66, 25541), (75, 25631), (82, 25757), (84, 25790),

Gene: MenE\_40 Start: 24361, Stop: 25365, Start Num: 9

Candidate Starts for MenE\_40:

(Start: 9 @24361 has 11 MA's), (13, 24409), (20, 24496), (22, 24505), (23, 24523), (30, 24613), (31, 24640), (32, 24643), (42, 24805), (43, 24832), (45, 24856), (75, 25162), (82, 25288), (84, 25321),

Gene: NCRodriguez\_40 Start: 24538, Stop: 25587, Start Num: 9

Candidate Starts for NCRodriguez\_40:

(Start: 9 @24538 has 11 MA's), (20, 24712), (22, 24721), (23, 24739), (26, 24757), (28, 24814), (30, 24829), (42, 25021), (43, 25048), (45, 25072), (46, 25081), (68, 25330), (75, 25384), (82, 25510), (84, 25543),

Gene: PhillyJawn\_40 Start: 24213, Stop: 25262, Start Num: 9

Candidate Starts for PhillyJawn\_40:

(Start: 9 @24213 has 11 MA's), (20, 24387), (22, 24396), (23, 24414), (26, 24432), (30, 24504), (42, 24696), (45, 24747), (46, 24756), (68, 25005), (75, 25059), (81, 25158), (82, 25185), (84, 25218),

Gene: Phingu\_42 Start: 24429, Stop: 25478, Start Num: 9

Candidate Starts for Phingu\_42:

(Start: 9 @24429 has 11 MA's), (20, 24603), (22, 24612), (23, 24630), (26, 24648), (30, 24720), (35, 24801), (42, 24912), (43, 24939), (45, 24963), (46, 24972), (75, 25275), (82, 25401), (84, 25434),

Gene: Phonegingi\_39 Start: 24253, Stop: 25311, Start Num: 9

Candidate Starts for Phonegingi\_39:

(Start: 9 @24253 has 11 MA's), (20, 24427), (22, 24436), (23, 24454), (26, 24472), (30, 24544), (42, 24736), (43, 24763), (45, 24787), (46, 24796), (68, 25054), (75, 25108), (82, 25234), (84, 25267),

Gene: Pickles13\_38 Start: 24523, Stop: 25575, Start Num: 9

Candidate Starts for Pickles13\_38:

(Start: 9 @24523 has 11 MA's), (20, 24697), (22, 24706), (23, 24724), (26, 24742), (30, 24814), (42, 25006), (43, 25033), (45, 25057), (46, 25066), (64, 25258), (66, 25279), (75, 25372), (82, 25498), (83, 25507), (84, 25531),

Gene: REQ3\_11 Start: 5140, Stop: 5982, Start Num: 11

Candidate Starts for REQ3\_11:

(8, 5086), (11, 5140), (18, 5209), (19, 5224), (21, 5263), (34, 5431), (37, 5476), (42, 5554), (44, 5590), (57, 5728), (58, 5752), (59, 5755), (61, 5761), (63, 5773), (72, 5878), (79, 5971),

Gene: Rooter\_56 Start: 30869, Stop: 31636, Start Num: 12

Candidate Starts for Rooter\_56:

(5, 30773), (7, 30791), (10, 30833), (Start: 12 @30869 has 1 MA's), (16, 30920), (24, 31019), (38, 31214), (40, 31232), (42, 31277),

Gene: ScoobySnack\_36 Start: 24034, Stop: 25080, Start Num: 9

Candidate Starts for ScoobySnack\_36:

(Start: 9 @24034 has 11 MA's), (16, 24130), (18, 24157), (20, 24208), (22, 24217), (23, 24235), (26, 24253), (30, 24325), (42, 24517), (43, 24544), (45, 24568), (46, 24577), (52, 24652), (71, 24844), (73, 24853), (75, 24880), (82, 25006), (84, 25036),

Gene: Violeta\_41 Start: 24308, Stop: 25357, Start Num: 9

Candidate Starts for Violeta\_41:

(Start: 9 @24308 has 11 MA's), (20, 24482), (22, 24491), (23, 24509), (26, 24527), (30, 24599), (42, 24791), (43, 24818), (45, 24842), (46, 24851), (75, 25154), (82, 25280), (84, 25313),

Gene: Warren\_39 Start: 24269, Stop: 25318, Start Num: 9

Candidate Starts for Warren\_39:

(Start: 9 @24269 has 11 MA's), (22, 24452), (23, 24470), (26, 24488), (30, 24560), (42, 24752), (43, 24779), (45, 24803), (46, 24812), (68, 25061), (75, 25115), (81, 25214), (82, 25241),

Gene: Winchester007\_55 Start: 30328, Stop: 31377, Start Num: 9

Candidate Starts for Winchester007\_55:

(Start: 9 @30328 has 11 MA's), (20, 30502), (22, 30511), (23, 30529), (26, 30547), (30, 30619), (42, 30811), (45, 30862), (46, 30871), (68, 31120), (75, 31174), (81, 31273), (82, 31300), (84, 31333),