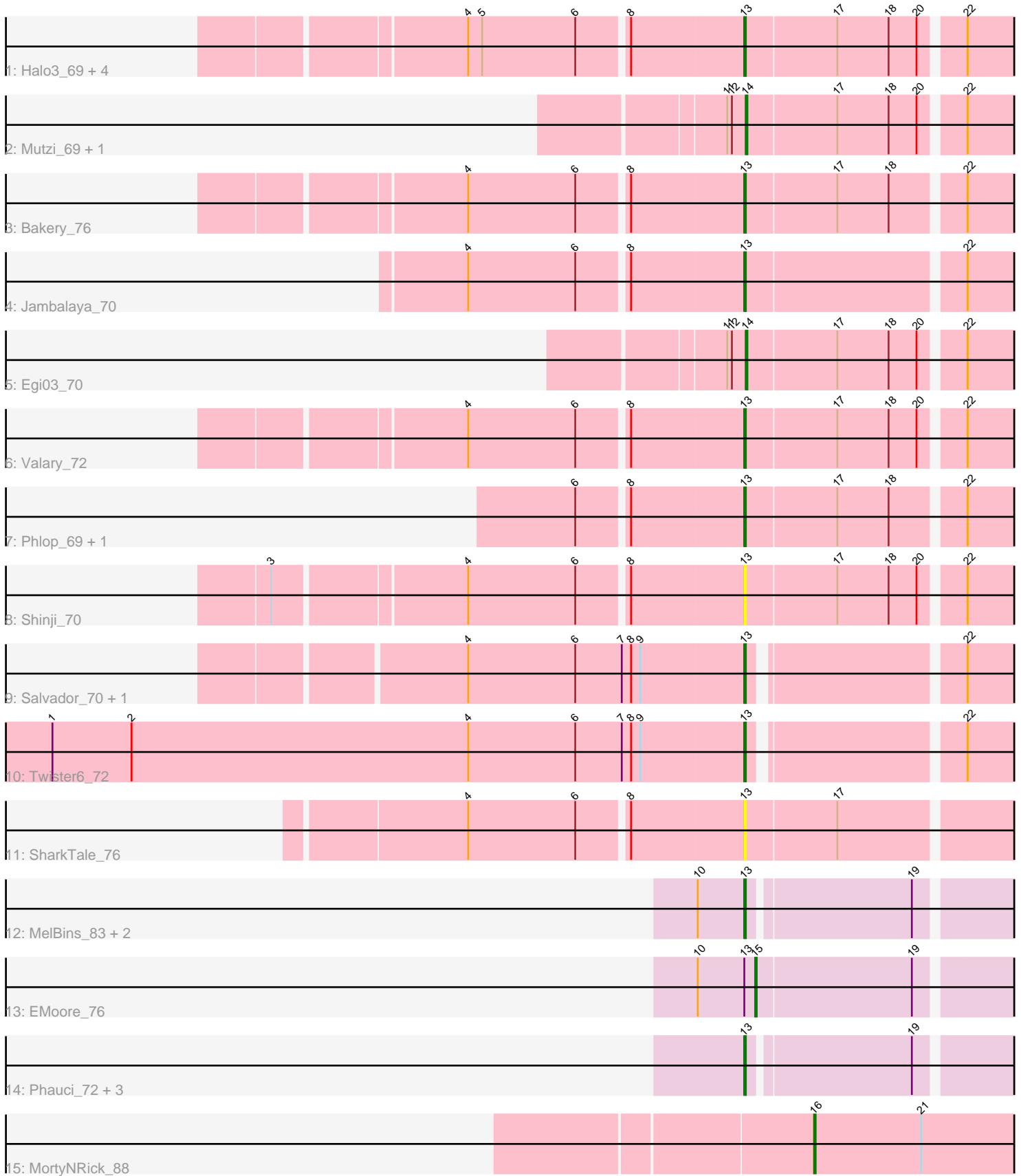


Pham 311926



Note: Tracks are now grouped by subcluster and scaled. Switching in subcluster is indicated by changes in track color. Track scale is now set by default to display the region 30 bp upstream of start 1 to 30 bp downstream of the last possible start. If this default region is judged to be packed too tightly with annotated starts, the track will be further scaled to only show that region of the ORF with annotated starts. This action will be indicated by adding "Zoomed" to the title. For starts, yellow indicates the location of called starts comprised solely of Glimmer/GeneMark auto-annotations, green indicates the location of called starts with at least 1 manual gene annotation.

Pham 311926 Report

This analysis was run 06/27/26 on database version 652.

Pham number 311926 has 27 members, 2 are drafts.

Phages represented in each track:

- Track 1 : Halo3_69, CherryCola_71, Wizard_68, KimmyK_71, Gezellig_68
- Track 2 : Mutzi_69, YungMoney_70
- Track 3 : Bakery_76
- Track 4 : Jambalaya_70
- Track 5 : Egi03_70
- Track 6 : Valary_72
- Track 7 : Phlop_69, PullumCavea_70
- Track 8 : Shinji_70
- Track 9 : Salvador_70, Evamon_70
- Track 10 : Twister6_72
- Track 11 : SharkTale_76
- Track 12 : MelBins_83, Ali17_77, Inspectinfecti_81
- Track 13 : EMoore_76
- Track 14 : Phauci_72, Leonard_80, Phinally_80, Hans_81
- Track 15 : MortyNRick_88

Summary of Final Annotations (See graph section above for start numbers):

The start number called the most often in the published annotations is 13, it was called in 20 of the 25 non-draft genes in the pham.

Genes that call this "Most Annotated" start:

- Ali17_77, Bakery_76, CherryCola_71, Evamon_70, Gezellig_68, Halo3_69, Hans_81, Inspectinfecti_81, Jambalaya_70, KimmyK_71, Leonard_80, MelBins_83, Phauci_72, Phinally_80, Phlop_69, PullumCavea_70, Salvador_70, SharkTale_76, Shinji_70, Twister6_72, Valary_72, Wizard_68,

Genes that have the "Most Annotated" start but do not call it:

- EMoore_76,

Genes that do not have the "Most Annotated" start:

- Egi03_70, MortyNRick_88, Mutzi_69, YungMoney_70,

Summary by start number:

Start 13:

- Found in 23 of 27 (85.2%) of genes in pham
- Manual Annotations of this start: 20 of 25
- Called 95.7% of time when present
- Phage (with cluster) where this start called: Ali17_77 (DE2), Bakery_76 (DC1), CherryCola_71 (DC1), Evamon_70 (DC1), Gezellig_68 (DC1), Halo3_69 (DC1), Hans_81 (DE2), Inspectinfecti_81 (DE2), Jambalaya_70 (DC1), KimmyK_71 (DC1), Leonard_80 (DE2), MelBins_83 (DE2), Phauci_72 (DE2), Phinally_80 (DE2), Phlop_69 (DC1), PullumCavea_70 (DC1), Salvador_70 (DC1), SharkTale_76 (DC1), Shinji_70 (DC1), Twister6_72 (DC1), Valary_72 (DC1), Wizard_68 (DC1),

Start 14:

- Found in 3 of 27 (11.1%) of genes in pham
- Manual Annotations of this start: 3 of 25
- Called 100.0% of time when present
- Phage (with cluster) where this start called: Egi03_70 (DC1), Mutzi_69 (DC1), YungMoney_70 (DC1),

Start 15:

- Found in 1 of 27 (3.7%) of genes in pham
- Manual Annotations of this start: 1 of 25
- Called 100.0% of time when present
- Phage (with cluster) where this start called: EMoore_76 (DE2),

Start 16:

- Found in 1 of 27 (3.7%) of genes in pham
- Manual Annotations of this start: 1 of 25
- Called 100.0% of time when present
- Phage (with cluster) where this start called: MortyNRick_88 (DN),

Summary by clusters:

There are 3 clusters represented in this pham: DN, DE2, DC1,

Info for manual annotations of cluster DC1:

- Start number 13 was manually annotated 13 times for cluster DC1.
- Start number 14 was manually annotated 3 times for cluster DC1.

Info for manual annotations of cluster DE2:

- Start number 13 was manually annotated 7 times for cluster DE2.
- Start number 15 was manually annotated 1 time for cluster DE2.

Info for manual annotations of cluster DN:

- Start number 16 was manually annotated 1 time for cluster DN.

Gene Information:

Gene: Ali17_77 Start: 55339, Stop: 55530, Start Num: 13

Candidate Starts for Ali17_77:

(10, 55309), (Start: 13 @55339 has 20 MA's), (19, 55438),

Gene: Bakery_76 Start: 52551, Stop: 52748, Start Num: 13

Candidate Starts for Bakery_76:

(4, 52380), (6, 52449), (8, 52479), (Start: 13 @52551 has 20 MA's), (17, 52608), (18, 52641), (22, 52683),

Gene: CherryCola_71 Start: 50605, Stop: 50802, Start Num: 13

Candidate Starts for CherryCola_71:

(4, 50434), (5, 50443), (6, 50503), (8, 50533), (Start: 13 @50605 has 20 MA's), (17, 50662), (18, 50695), (20, 50713), (22, 50737),

Gene: EMoore_76 Start: 56161, Stop: 56352, Start Num: 15

Candidate Starts for EMoore_76:

(10, 56125), (Start: 13 @56155 has 20 MA's), (Start: 15 @56161 has 1 MA's), (19, 56260),

Gene: Egi03_70 Start: 49464, Stop: 49658, Start Num: 14

Candidate Starts for Egi03_70:

(11, 49452), (12, 49455), (Start: 14 @49464 has 3 MA's), (17, 49521), (18, 49554), (20, 49572), (22, 49596),

Gene: Evamon_70 Start: 49653, Stop: 49841, Start Num: 13

Candidate Starts for Evamon_70:

(4, 49476), (6, 49545), (7, 49575), (8, 49581), (9, 49587), (Start: 13 @49653 has 20 MA's), (22, 49776),

Gene: Gezellig_68 Start: 49851, Stop: 50048, Start Num: 13

Candidate Starts for Gezellig_68:

(4, 49680), (5, 49689), (6, 49749), (8, 49779), (Start: 13 @49851 has 20 MA's), (17, 49908), (18, 49941), (20, 49959), (22, 49983),

Gene: Halo3_69 Start: 50436, Stop: 50633, Start Num: 13

Candidate Starts for Halo3_69:

(4, 50265), (5, 50274), (6, 50334), (8, 50364), (Start: 13 @50436 has 20 MA's), (17, 50493), (18, 50526), (20, 50544), (22, 50568),

Gene: Hans_81 Start: 56266, Stop: 56457, Start Num: 13

Candidate Starts for Hans_81:

(Start: 13 @56266 has 20 MA's), (19, 56365),

Gene: Inspectinfecti_81 Start: 56243, Stop: 56434, Start Num: 13

Candidate Starts for Inspectinfecti_81:

(10, 56213), (Start: 13 @56243 has 20 MA's), (19, 56342),

Gene: Jambalaya_70 Start: 49767, Stop: 49988, Start Num: 13

Candidate Starts for Jambalaya_70:

(4, 49596), (6, 49665), (8, 49695), (Start: 13 @49767 has 20 MA's), (22, 49899),

Gene: KimmyK_71 Start: 50298, Stop: 50495, Start Num: 13

Candidate Starts for KimmyK_71:

(4, 50127), (5, 50136), (6, 50196), (8, 50226), (Start: 13 @50298 has 20 MA's), (17, 50355), (18, 50388), (20, 50406), (22, 50430),

Gene: Leonard_80 Start: 56306, Stop: 56497, Start Num: 13

Candidate Starts for Leonard_80:

(Start: 13 @56306 has 20 MA's), (19, 56405),

Gene: MelBins_83 Start: 56964, Stop: 57155, Start Num: 13

Candidate Starts for MelBins_83:

(10, 56934), (Start: 13 @56964 has 20 MA's), (19, 57063),

Gene: MortyNRick_88 Start: 50830, Stop: 51006, Start Num: 16

Candidate Starts for MortyNRick_88:

(Start: 16 @50830 has 1 MA's), (21, 50899),

Gene: Mutzi_69 Start: 50736, Stop: 50933, Start Num: 14

Candidate Starts for Mutzi_69:

(11, 50724), (12, 50727), (Start: 14 @50736 has 3 MA's), (17, 50793), (18, 50826), (20, 50844), (22, 50868),

Gene: Phauci_72 Start: 53343, Stop: 53534, Start Num: 13

Candidate Starts for Phauci_72:

(Start: 13 @53343 has 20 MA's), (19, 53442),

Gene: Phinally_80 Start: 56303, Stop: 56494, Start Num: 13

Candidate Starts for Phinally_80:

(Start: 13 @56303 has 20 MA's), (19, 56402),

Gene: Phlop_69 Start: 49941, Stop: 50138, Start Num: 13

Candidate Starts for Phlop_69:

(6, 49839), (8, 49869), (Start: 13 @49941 has 20 MA's), (17, 49998), (18, 50031), (22, 50073),

Gene: PullumCavea_70 Start: 50118, Stop: 50315, Start Num: 13

Candidate Starts for PullumCavea_70:

(6, 50016), (8, 50046), (Start: 13 @50118 has 20 MA's), (17, 50175), (18, 50208), (22, 50250),

Gene: Salvador_70 Start: 49651, Stop: 49839, Start Num: 13

Candidate Starts for Salvador_70:

(4, 49474), (6, 49543), (7, 49573), (8, 49579), (9, 49585), (Start: 13 @49651 has 20 MA's), (22, 49774),

Gene: SharkTale_76 Start: 52873, Stop: 53070, Start Num: 13

Candidate Starts for SharkTale_76:

(4, 52702), (6, 52771), (8, 52801), (Start: 13 @52873 has 20 MA's), (17, 52930),

Gene: Shinji_70 Start: 49632, Stop: 49829, Start Num: 13

Candidate Starts for Shinji_70:

(3, 49344), (4, 49461), (6, 49530), (8, 49560), (Start: 13 @49632 has 20 MA's), (17, 49689), (18, 49722), (20, 49740), (22, 49764),

Gene: Twister6_72 Start: 49382, Stop: 49570, Start Num: 13

Candidate Starts for Twister6_72:

(1, 48938), (2, 48989), (4, 49205), (6, 49274), (7, 49304), (8, 49310), (9, 49316), (Start: 13 @49382 has 20 MA's), (22, 49505),

Gene: Valary_72 Start: 50673, Stop: 50870, Start Num: 13

Candidate Starts for Valary_72:

(4, 50502), (6, 50571), (8, 50601), (Start: 13 @50673 has 20 MA's), (17, 50730), (18, 50763), (20, 50781), (22, 50805),

Gene: Wizard_68 Start: 49851, Stop: 50048, Start Num: 13

Candidate Starts for Wizard_68:

(4, 49680), (5, 49689), (6, 49749), (8, 49779), (Start: 13 @49851 has 20 MA's), (17, 49908), (18, 49941), (20, 49959), (22, 49983),

Gene: YungMoney_70 Start: 51576, Stop: 51773, Start Num: 14

Candidate Starts for YungMoney_70:

(11, 51564), (12, 51567), (Start: 14 @51576 has 3 MA's), (17, 51633), (18, 51666), (20, 51684), (22, 51708),