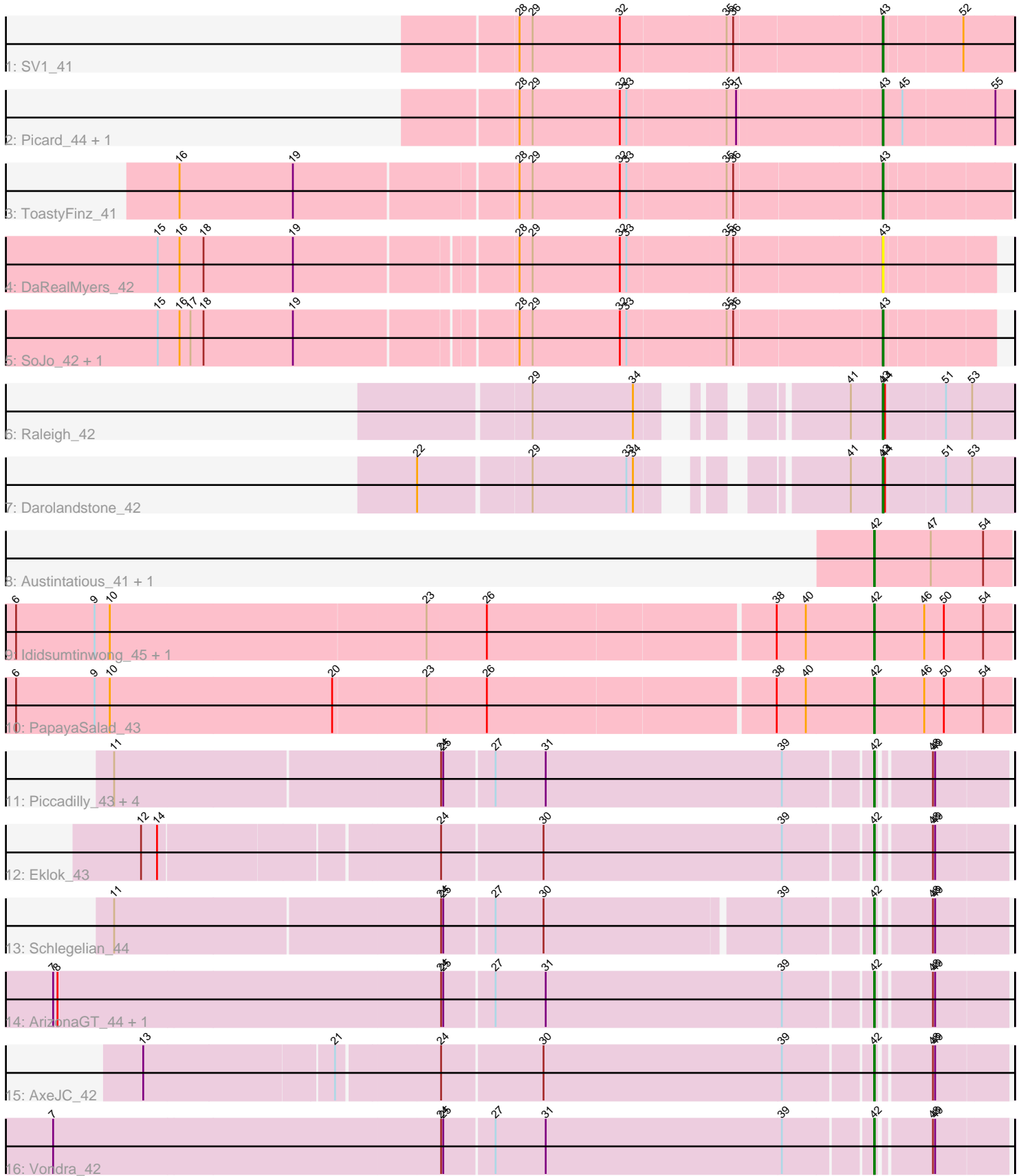


Zoomed Pham 311942



Note: Tracks are now grouped by subcluster and scaled. Switching in subcluster is indicated by changes in track color. Track scale is now set by default to display the region 30 bp upstream of start 1 to 30 bp downstream of the last possible start. If this default region is judged to be packed too tightly with annotated starts, the track will be further scaled to only show that region of the ORF with annotated starts. This action will be indicated by adding "Zoomed" to the title. For starts, yellow indicates the location of called starts comprised solely of Glimmer/GeneMark auto-annotations, green indicates the location of called starts with at least 1 manual gene annotation.

Pham 311942 Report

This analysis was run 06/27/26 on database version 652.

WARNING: Pham size does not match number of genes in report. Either unphamerated genes have been added (by you) or starterator has removed genes due to invalid start codon.

Pham number 311942 has 25 members, 1 are drafts.

Phages represented in each track:

- Track 1 : SV1_41
- Track 2 : Picard_44, Mojarita_44
- Track 3 : ToastyFinz_41
- Track 4 : DaRealMyers_42
- Track 5 : SoJo_42, Tubberson_42
- Track 6 : Raleigh_42
- Track 7 : Darolandstone_42
- Track 8 : Austintatious_41, Lishka_41
- Track 9 : Ididsumtinwong_45, Bioscum_44
- Track 10 : PapayaSalad_43
- Track 11 : Piccadilly_43, Eastland_43, HFrancette_44, Ignacio_43, FrumpyGal_44
- Track 12 : Eklok_43
- Track 13 : Schlegelian_44
- Track 14 : ArizonaGT_44, Cumberbatch_44
- Track 15 : AxeJC_42
- Track 16 : Vondra_42

Summary of Final Annotations (See graph section above for start numbers):

The start number called the most often in the published annotations is 42, it was called in 16 of the 24 non-draft genes in the pham.

Genes that call this "Most Annotated" start:

- ArizonaGT_44, Austintatious_41, AxeJC_42, Bioscum_44, Cumberbatch_44, Eastland_43, Eklok_43, FrumpyGal_44, HFrancette_44, Ididsumtinwong_45, Ignacio_43, Lishka_41, PapayaSalad_43, Piccadilly_43, Schlegelian_44, Vondra_42,

Genes that have the "Most Annotated" start but do not call it:

-

Genes that do not have the "Most Annotated" start:

- DaRealMyers_42, Darolandstone_42, Mojerita_44, Picard_44, Raleigh_42, SV1_41, SoJo_42, ToastyFinz_41, Tubberson_42,

Summary by start number:

Start 42:

- Found in 16 of 25 (64.0%) of genes in pham
- Manual Annotations of this start: 16 of 24
- Called 100.0% of time when present
- Phage (with cluster) where this start called: ArizonaGT_44 (BP), Austintatious_41 (BC3), AxeJC_42 (BP), Bioscum_44 (BC3), Cumberbatch_44 (BP), Eastland_43 (BP), Eklok_43 (BP), FrumpyGal_44 (BP), HFrancette_44 (BP), Ididsumtinwong_45 (BC3), Ignacio_43 (BP), Lishka_41 (BC3), PapayaSalad_43 (BC3), Piccadilly_43 (BP), Schlegelian_44 (BP), Vondra_42 (BP),

Start 43:

- Found in 9 of 25 (36.0%) of genes in pham
- Manual Annotations of this start: 8 of 24
- Called 100.0% of time when present
- Phage (with cluster) where this start called: DaRealMyers_42 (BC1), Darolandstone_42 (BC2), Mojerita_44 (BC1), Picard_44 (BC1), Raleigh_42 (BC2), SV1_41 (BC1), SoJo_42 (BC1), ToastyFinz_41 (BC1), Tubberson_42 (BC1),

Summary by clusters:

There are 4 clusters represented in this pham: BP, BC1, BC2, BC3,

Info for manual annotations of cluster BC1:

- Start number 43 was manually annotated 6 times for cluster BC1.

Info for manual annotations of cluster BC2:

- Start number 43 was manually annotated 2 times for cluster BC2.

Info for manual annotations of cluster BC3:

- Start number 42 was manually annotated 5 times for cluster BC3.

Info for manual annotations of cluster BP:

- Start number 42 was manually annotated 11 times for cluster BP.

Gene Information:

Gene: ArizonaGT_44 Start: 29964, Stop: 30128, Start Num: 42

Candidate Starts for ArizonaGT_44:

(2, 28677), (3, 28710), (4, 28776), (7, 28863), (8, 28869), (24, 29388), (25, 29391), (27, 29457), (31, 29526), (39, 29850), (Start: 42 @29964 has 16 MA's), (48, 30030), (49, 30033),

Gene: Austintatious_41 Start: 27402, Stop: 27590, Start Num: 42

Candidate Starts for Austintatious_41:

(Start: 42 @27402 has 16 MA's), (47, 27480), (54, 27552),

Gene: AxeJC_42 Start: 29666, Stop: 29830, Start Num: 42

Candidate Starts for AxeJC_42:

(13, 28706), (21, 28958), (24, 29090), (30, 29225), (39, 29552), (Start: 42 @29666 has 16 MA's), (48, 29732), (49, 29735),

Gene: Bioscum_44 Start: 29698, Stop: 29886, Start Num: 42

Candidate Starts for Bioscum_44:

(4, 28513), (5, 28516), (6, 28549), (9, 28657), (10, 28678), (23, 29104), (26, 29185), (38, 29566), (40, 29605), (Start: 42 @29698 has 16 MA's), (46, 29767), (50, 29794), (54, 29848),

Gene: Cumberbatch_44 Start: 29964, Stop: 30128, Start Num: 42

Candidate Starts for Cumberbatch_44:

(2, 28677), (3, 28710), (4, 28776), (7, 28863), (8, 28869), (24, 29388), (25, 29391), (27, 29457), (31, 29526), (39, 29850), (Start: 42 @29964 has 16 MA's), (48, 30030), (49, 30033),

Gene: DaRealMyers_42 Start: 31200, Stop: 31340, Start Num: 43

Candidate Starts for DaRealMyers_42:

(15, 30249), (16, 30279), (18, 30312), (19, 30435), (28, 30720), (29, 30738), (32, 30858), (33, 30867), (35, 30999), (36, 31008), (Start: 43 @31200 has 8 MA's),

Gene: Darolandstone_42 Start: 32791, Stop: 32961, Start Num: 43

Candidate Starts for Darolandstone_42:

(22, 32269), (29, 32416), (33, 32545), (34, 32554), (41, 32749), (Start: 43 @32791 has 8 MA's), (44, 32794), (51, 32872), (53, 32905),

Gene: Eastland_43 Start: 29924, Stop: 30088, Start Num: 42

Candidate Starts for Eastland_43:

(11, 28913), (24, 29348), (25, 29351), (27, 29417), (31, 29486), (39, 29810), (Start: 42 @29924 has 16 MA's), (48, 29990), (49, 29993),

Gene: Eklok_43 Start: 29723, Stop: 29887, Start Num: 42

Candidate Starts for Eklok_43:

(12, 28763), (14, 28784), (24, 29147), (30, 29282), (39, 29609), (Start: 42 @29723 has 16 MA's), (48, 29789), (49, 29792),

Gene: FrumpyGal_44 Start: 29924, Stop: 30088, Start Num: 42

Candidate Starts for FrumpyGal_44:

(11, 28913), (24, 29348), (25, 29351), (27, 29417), (31, 29486), (39, 29810), (Start: 42 @29924 has 16 MA's), (48, 29990), (49, 29993),

Gene: HFrancette_44 Start: 30702, Stop: 30866, Start Num: 42

Candidate Starts for HFrancette_44:

(11, 29691), (24, 30126), (25, 30129), (27, 30195), (31, 30264), (39, 30588), (Start: 42 @30702 has 16 MA's), (48, 30768), (49, 30771),

Gene: Ididsumtinwong_45 Start: 29698, Stop: 29886, Start Num: 42

Candidate Starts for Ididsumtinwong_45:

(4, 28513), (5, 28516), (6, 28549), (9, 28657), (10, 28678), (23, 29104), (26, 29185), (38, 29566), (40, 29605), (Start: 42 @29698 has 16 MA's), (46, 29767), (50, 29794), (54, 29848),

Gene: Ignacio_43 Start: 30605, Stop: 30769, Start Num: 42

Candidate Starts for Ignacio_43:

(11, 29594), (24, 30029), (25, 30032), (27, 30098), (31, 30167), (39, 30491), (Start: 42 @30605 has 16 MA's), (48, 30671), (49, 30674),

Gene: Lishka_41 Start: 27402, Stop: 27590, Start Num: 42
Candidate Starts for Lishka_41:
(Start: 42 @27402 has 16 MA's), (47, 27480), (54, 27552),

Gene: Mojarita_44 Start: 30457, Stop: 30630, Start Num: 43
Candidate Starts for Mojarita_44:
(28, 29977), (29, 29995), (32, 30115), (33, 30124), (35, 30256), (37, 30268), (Start: 43 @30457 has 8 MA's), (45, 30484), (55, 30604),

Gene: PapayaSalad_43 Start: 29988, Stop: 30176, Start Num: 42
Candidate Starts for PapayaSalad_43:
(4, 28803), (5, 28806), (6, 28839), (9, 28947), (10, 28968), (20, 29271), (23, 29394), (26, 29475), (38, 29856), (40, 29895), (Start: 42 @29988 has 16 MA's), (46, 30057), (50, 30084), (54, 30138),

Gene: Picard_44 Start: 30655, Stop: 30828, Start Num: 43
Candidate Starts for Picard_44:
(28, 30175), (29, 30193), (32, 30313), (33, 30322), (35, 30454), (37, 30466), (Start: 43 @30655 has 8 MA's), (45, 30682), (55, 30802),

Gene: Piccadilly_43 Start: 29923, Stop: 30087, Start Num: 42
Candidate Starts for Piccadilly_43:
(11, 28912), (24, 29347), (25, 29350), (27, 29416), (31, 29485), (39, 29809), (Start: 42 @29923 has 16 MA's), (48, 29989), (49, 29992),

Gene: Raleigh_42 Start: 33159, Stop: 33329, Start Num: 43
Candidate Starts for Raleigh_42:
(29, 32784), (34, 32922), (41, 33117), (Start: 43 @33159 has 8 MA's), (44, 33162), (51, 33240), (53, 33273),

Gene: SV1_41 Start: 29360, Stop: 29527, Start Num: 43
Candidate Starts for SV1_41:
(28, 28880), (29, 28898), (32, 29018), (35, 29159), (36, 29168), (Start: 43 @29360 has 8 MA's), (52, 29462),

Gene: Schlegelian_44 Start: 30473, Stop: 30637, Start Num: 42
Candidate Starts for Schlegelian_44:
(11, 29477), (24, 29912), (25, 29915), (27, 29981), (30, 30047), (39, 30359), (Start: 42 @30473 has 16 MA's), (48, 30539), (49, 30542),

Gene: SoJo_42 Start: 31195, Stop: 31335, Start Num: 43
Candidate Starts for SoJo_42:
(15, 30244), (16, 30274), (17, 30289), (18, 30307), (19, 30430), (28, 30715), (29, 30733), (32, 30853), (33, 30862), (35, 30994), (36, 31003), (Start: 43 @31195 has 8 MA's),

Gene: ToastyFinz_41 Start: 31997, Stop: 32158, Start Num: 43
Candidate Starts for ToastyFinz_41:
(16, 31067), (19, 31223), (28, 31517), (29, 31535), (32, 31655), (33, 31664), (35, 31796), (36, 31805), (Start: 43 @31997 has 8 MA's),

Gene: Tubberson_42 Start: 31197, Stop: 31337, Start Num: 43

Candidate Starts for Tubberson_42:

(15, 30246), (16, 30276), (17, 30291), (18, 30309), (19, 30432), (28, 30717), (29, 30735), (32, 30855),
(33, 30864), (35, 30996), (36, 31005), (Start: 43 @31197 has 8 MA's),

Gene: Vondra_42 Start: 29775, Stop: 29939, Start Num: 42

Candidate Starts for Vondra_42:

(1, 28443), (7, 28674), (24, 29199), (25, 29202), (27, 29268), (31, 29337), (39, 29661), (Start: 42
@29775 has 16 MA's), (48, 29841), (49, 29844),