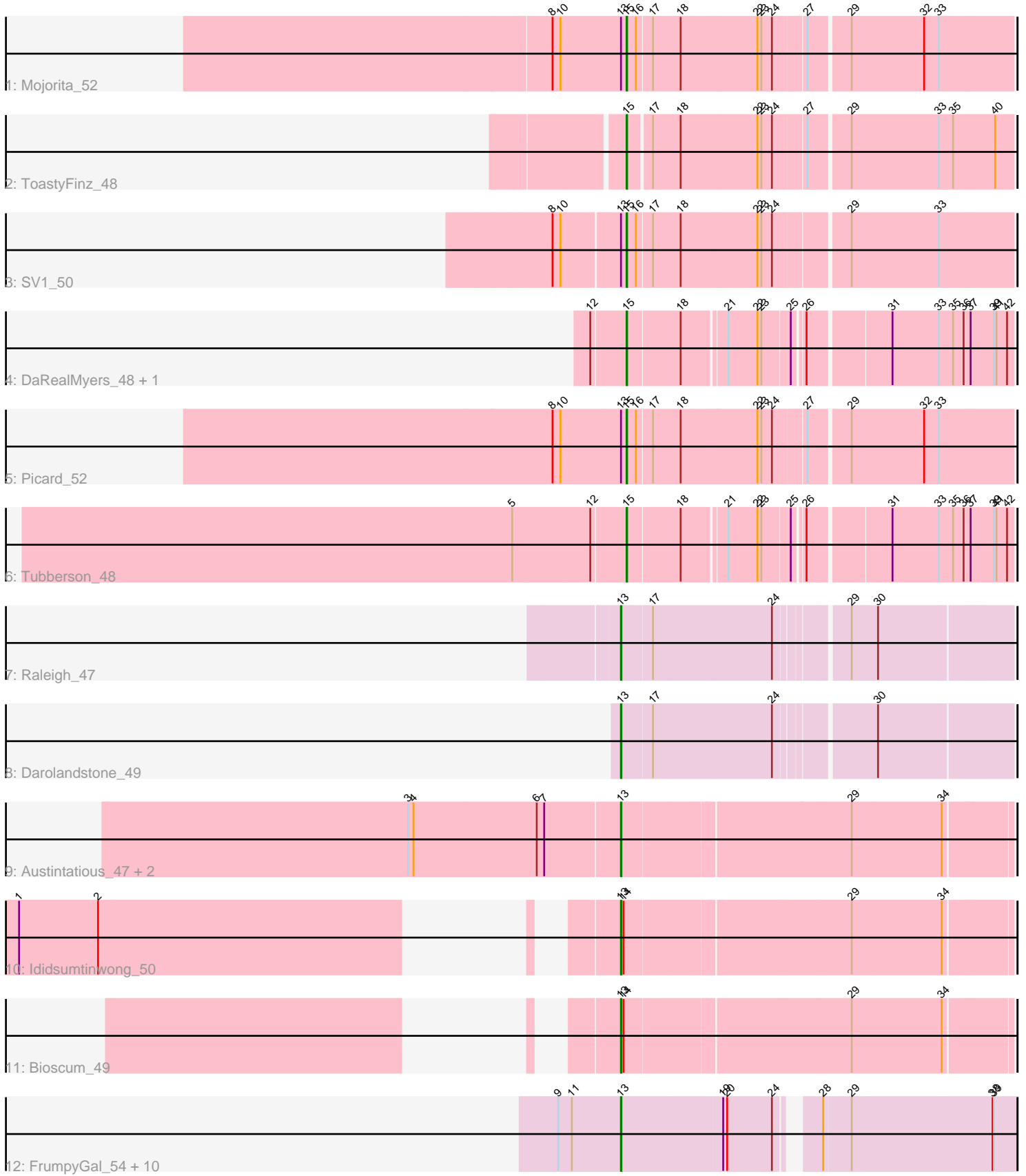


Pham 311944



Note: Tracks are now grouped by subcluster and scaled. Switching in subcluster is indicated by changes in track color. Track scale is now set by default to display the region 30 bp upstream of start 1 to 30 bp downstream of the last possible start. If this default region is judged to be packed too tightly with annotated starts, the track will be further scaled to only show that region of the ORF with annotated starts. This action will be indicated by adding "Zoomed" to the title. For starts, yellow indicates the location of called starts comprised solely of Glimmer/GeneMark auto-annotations, green indicates the location of called starts with at least 1 manual gene annotation.

Pham 311944 Report

This analysis was run 06/27/26 on database version 652.

WARNING: Pham size does not match number of genes in report. Either unphamerated genes have been added (by you) or starterator has removed genes due to invalid start codon.

Pham number 311944 has 25 members, 1 are drafts.

Phages represented in each track:

- Track 1 : Mojorita_52
- Track 2 : ToastyFinz_48
- Track 3 : SV1_50
- Track 4 : DaRealMyers_48, SoJo_48
- Track 5 : Picard_52
- Track 6 : Tubberson_48
- Track 7 : Raleigh_47
- Track 8 : Darolandstone_49
- Track 9 : Austintatious_47, PapayaSalad_49, Lishka_47
- Track 10 : Ididsumtinwong_50
- Track 11 : Bioscum_49
- Track 12 : FrumpyGal_54, Ignacio_53, Cumberbatch_54, Piccadilly_53, Eklok_53, Eastland_53, HFrancette_54, Schlegelian_52, ArizonaGT_54, Vondra_52, AxeJC_53

Summary of Final Annotations (See graph section above for start numbers):

The start number called the most often in the published annotations is 13, it was called in 18 of the 24 non-draft genes in the pham.

Genes that call this "Most Annotated" start:

- ArizonaGT_54, Austintatious_47, AxeJC_53, Bioscum_49, Cumberbatch_54, Darolandstone_49, Eastland_53, Eklok_53, FrumpyGal_54, HFrancette_54, Ididsumtinwong_50, Ignacio_53, Lishka_47, PapayaSalad_49, Piccadilly_53, Raleigh_47, Schlegelian_52, Vondra_52,

Genes that have the "Most Annotated" start but do not call it:

- Mojorita_52, Picard_52, SV1_50,

Genes that do not have the "Most Annotated" start:

- DaRealMyers_48, SoJo_48, ToastyFinz_48, Tubberson_48,

Summary by start number:

Start 13:

- Found in 21 of 25 (84.0%) of genes in pham
- Manual Annotations of this start: 18 of 24
- Called 85.7% of time when present
- Phage (with cluster) where this start called: ArizonaGT_54 (BP), Austintatious_47 (BC3), AxeJC_53 (BP), Bioscum_49 (BC3), Cumberbatch_54 (BP), Darolandstone_49 (BC2), Eastland_53 (BP), Eklok_53 (BP), FrumpyGal_54 (BP), HFrancette_54 (BP), Ididsumtinwong_50 (BC3), Ignacio_53 (BP), Lishka_47 (BC3), PapayaSalad_49 (BC3), Piccadilly_53 (BP), Raleigh_47 (BC2), Schlegelian_52 (BP), Vondra_52 (BP),

Start 15:

- Found in 7 of 25 (28.0%) of genes in pham
- Manual Annotations of this start: 6 of 24
- Called 100.0% of time when present
- Phage (with cluster) where this start called: DaRealMyers_48 (BC1), Moajorita_52 (BC1), Picard_52 (BC1), SV1_50 (BC1), SoJo_48 (BC1), ToastyFinz_48 (BC1), Tubberson_48 (BC1),

Summary by clusters:

There are 4 clusters represented in this pham: BP, BC1, BC2, BC3,

Info for manual annotations of cluster BC1:

- Start number 15 was manually annotated 6 times for cluster BC1.

Info for manual annotations of cluster BC2:

- Start number 13 was manually annotated 2 times for cluster BC2.

Info for manual annotations of cluster BC3:

- Start number 13 was manually annotated 5 times for cluster BC3.

Info for manual annotations of cluster BP:

- Start number 13 was manually annotated 11 times for cluster BP.

Gene Information:

Gene: ArizonaGT_54 Start: 33768, Stop: 34595, Start Num: 13

Candidate Starts for ArizonaGT_54:

(9, 33627), (11, 33657), (Start: 13 @33768 has 18 MA's), (19, 33990), (20, 33999), (24, 34101), (28, 34167), (29, 34227), (38, 34539), (39, 34542),

Gene: Austintatious_47 Start: 30353, Stop: 31189, Start Num: 13

Candidate Starts for Austintatious_47:

(3, 29879), (4, 29891), (6, 30170), (7, 30185), (Start: 13 @30353 has 18 MA's), (29, 30842), (34, 31043),

Gene: AxeJC_53 Start: 33884, Stop: 34711, Start Num: 13

Candidate Starts for AxeJC_53:

(9, 33743), (11, 33773), (Start: 13 @33884 has 18 MA's), (19, 34106), (20, 34115), (24, 34217), (28, 34283), (29, 34343), (38, 34655), (39, 34658),

Gene: Bioscum_49 Start: 32463, Stop: 33296, Start Num: 13

Candidate Starts for Bioscum_49:

(Start: 13 @32463 has 18 MA's), (14, 32469), (29, 32949), (34, 33150),

Gene: Cumberbatch_54 Start: 33768, Stop: 34595, Start Num: 13

Candidate Starts for Cumberbatch_54:

(9, 33627), (11, 33657), (Start: 13 @33768 has 18 MA's), (19, 33990), (20, 33999), (24, 34101), (28, 34167), (29, 34227), (38, 34539), (39, 34542),

Gene: DaRealMyers_48 Start: 34573, Stop: 35367, Start Num: 15

Candidate Starts for DaRealMyers_48:

(12, 34501), (Start: 15 @34573 has 6 MA's), (18, 34687), (21, 34777), (22, 34843), (23, 34852), (25, 34909), (26, 34927), (31, 35098), (33, 35203), (35, 35236), (36, 35260), (37, 35275), (39, 35326), (41, 35332), (42, 35356),

Gene: Darolandstone_49 Start: 36242, Stop: 37060, Start Num: 13

Candidate Starts for Darolandstone_49:

(Start: 13 @36242 has 18 MA's), (17, 36308), (24, 36572), (30, 36767),

Gene: Eastland_53 Start: 33728, Stop: 34555, Start Num: 13

Candidate Starts for Eastland_53:

(9, 33587), (11, 33617), (Start: 13 @33728 has 18 MA's), (19, 33950), (20, 33959), (24, 34061), (28, 34127), (29, 34187), (38, 34499), (39, 34502),

Gene: Eklok_53 Start: 33527, Stop: 34354, Start Num: 13

Candidate Starts for Eklok_53:

(9, 33386), (11, 33416), (Start: 13 @33527 has 18 MA's), (19, 33749), (20, 33758), (24, 33860), (28, 33926), (29, 33986), (38, 34298), (39, 34301),

Gene: FrumpyGal_54 Start: 33728, Stop: 34555, Start Num: 13

Candidate Starts for FrumpyGal_54:

(9, 33587), (11, 33617), (Start: 13 @33728 has 18 MA's), (19, 33950), (20, 33959), (24, 34061), (28, 34127), (29, 34187), (38, 34499), (39, 34502),

Gene: HFrancette_54 Start: 34416, Stop: 35243, Start Num: 13

Candidate Starts for HFrancette_54:

(9, 34275), (11, 34305), (Start: 13 @34416 has 18 MA's), (19, 34638), (20, 34647), (24, 34749), (28, 34815), (29, 34875), (38, 35187), (39, 35190),

Gene: Ididsumtinwong_50 Start: 32455, Stop: 33288, Start Num: 13

Candidate Starts for Ididsumtinwong_50:

(1, 31462), (2, 31642), (Start: 13 @32455 has 18 MA's), (14, 32461), (29, 32941), (34, 33142),

Gene: Ignacio_53 Start: 34319, Stop: 35146, Start Num: 13

Candidate Starts for Ignacio_53:

(9, 34178), (11, 34208), (Start: 13 @34319 has 18 MA's), (19, 34541), (20, 34550), (24, 34652), (28, 34718), (29, 34778), (38, 35090), (39, 35093),

Gene: Lishka_47 Start: 30355, Stop: 31191, Start Num: 13

Candidate Starts for Lishka_47:

(3, 29881), (4, 29893), (6, 30172), (7, 30187), (Start: 13 @30355 has 18 MA's), (29, 30844), (34, 31045),

Gene: Mojarita_52 Start: 34066, Stop: 34896, Start Num: 15

Candidate Starts for Mojarita_52:

(8, 33901), (10, 33919), (Start: 13 @34054 has 18 MA's), (Start: 15 @34066 has 6 MA's), (16, 34087), (17, 34120), (18, 34183), (22, 34348), (23, 34357), (24, 34381), (27, 34444), (29, 34531), (32, 34696), (33, 34729),

Gene: PapayaSalad_49 Start: 32950, Stop: 33786, Start Num: 13

Candidate Starts for PapayaSalad_49:

(3, 32476), (4, 32488), (6, 32767), (7, 32782), (Start: 13 @32950 has 18 MA's), (29, 33439), (34, 33640),

Gene: Picard_52 Start: 34264, Stop: 35094, Start Num: 15

Candidate Starts for Picard_52:

(8, 34099), (10, 34117), (Start: 13 @34252 has 18 MA's), (Start: 15 @34264 has 6 MA's), (16, 34285), (17, 34318), (18, 34381), (22, 34546), (23, 34555), (24, 34579), (27, 34642), (29, 34729), (32, 34894), (33, 34927),

Gene: Piccadilly_53 Start: 33727, Stop: 34554, Start Num: 13

Candidate Starts for Piccadilly_53:

(9, 33586), (11, 33616), (Start: 13 @33727 has 18 MA's), (19, 33949), (20, 33958), (24, 34060), (28, 34126), (29, 34186), (38, 34498), (39, 34501),

Gene: Raleigh_47 Start: 36279, Stop: 37097, Start Num: 13

Candidate Starts for Raleigh_47:

(Start: 13 @36279 has 18 MA's), (17, 36345), (24, 36609), (29, 36750), (30, 36804),

Gene: SV1_50 Start: 32958, Stop: 33791, Start Num: 15

Candidate Starts for SV1_50:

(8, 32805), (10, 32823), (Start: 13 @32946 has 18 MA's), (Start: 15 @32958 has 6 MA's), (16, 32979), (17, 33012), (18, 33075), (22, 33243), (23, 33252), (24, 33276), (29, 33426), (33, 33624),

Gene: Schlegelian_52 Start: 33502, Stop: 34329, Start Num: 13

Candidate Starts for Schlegelian_52:

(9, 33361), (11, 33391), (Start: 13 @33502 has 18 MA's), (19, 33724), (20, 33733), (24, 33835), (28, 33901), (29, 33961), (38, 34273), (39, 34276),

Gene: SoJo_48 Start: 34568, Stop: 35362, Start Num: 15

Candidate Starts for SoJo_48:

(12, 34496), (Start: 15 @34568 has 6 MA's), (18, 34682), (21, 34772), (22, 34838), (23, 34847), (25, 34904), (26, 34922), (31, 35093), (33, 35198), (35, 35231), (36, 35255), (37, 35270), (39, 35321), (41, 35327), (42, 35351),

Gene: ToastyFinz_48 Start: 35454, Stop: 36284, Start Num: 15

Candidate Starts for ToastyFinz_48:

(Start: 15 @35454 has 6 MA's), (17, 35499), (18, 35562), (22, 35733), (23, 35742), (24, 35766), (27, 35832), (29, 35919), (33, 36117), (35, 36150), (40, 36243),

Gene: Tubberson_48 Start: 34569, Stop: 35363, Start Num: 15

Candidate Starts for Tubberson_48:

(5, 34323), (12, 34497), (Start: 15 @34569 has 6 MA's), (18, 34683), (21, 34773), (22, 34839), (23, 34848), (25, 34905), (26, 34923), (31, 35094), (33, 35199), (35, 35232), (36, 35256), (37, 35271), (39, 35322), (41, 35328), (42, 35352),

Gene: Vondra_52 Start: 33313, Stop: 34140, Start Num: 13

Candidate Starts for Vondra_52:

(9, 33172), (11, 33202), (Start: 13 @33313 has 18 MA's), (19, 33535), (20, 33544), (24, 33646), (28, 33712), (29, 33772), (38, 34084), (39, 34087),