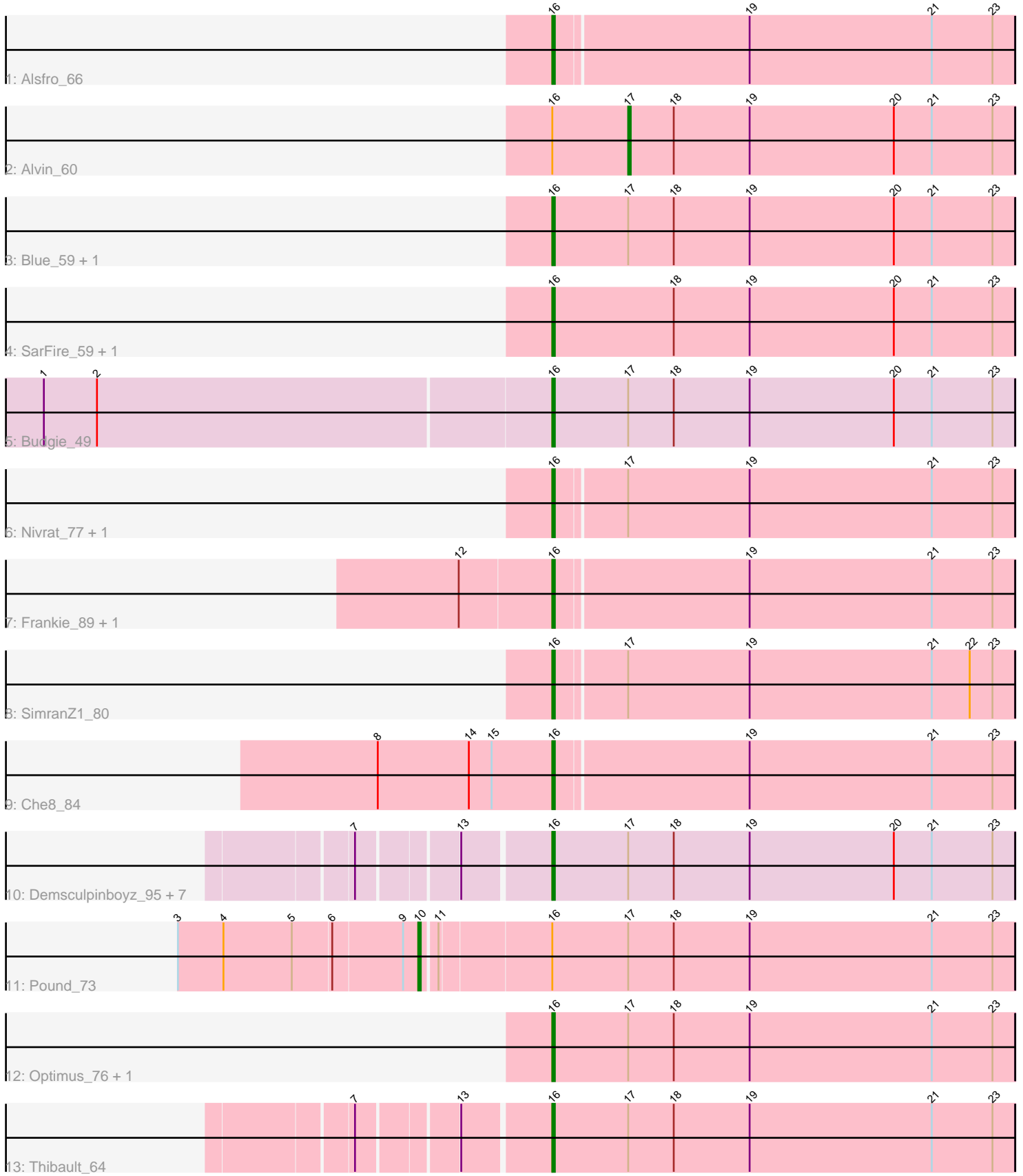


Pham 311950



Note: Tracks are now grouped by subcluster and scaled. Switching in subcluster is indicated by changes in track color. Track scale is now set by default to display the region 30 bp upstream of start 1 to 30 bp downstream of the last possible start. If this default region is judged to be packed too tightly with annotated starts, the track will be further scaled to only show that region of the ORF with annotated starts. This action will be indicated by adding "Zoomed" to the title. For starts, yellow indicates the location of called starts comprised solely of Glimmer/GeneMark auto-annotations, green indicates the location of called starts with at least 1 manual gene annotation.

Pham 311950 Report

This analysis was run 06/27/26 on database version 652.

Pham number 311950 has 25 members, 3 are drafts.

Phages represented in each track:

- Track 1 : Alsfro_66
- Track 2 : Alvin_60
- Track 3 : Blue_59, TheloniousMonk_63
- Track 4 : SarFire_59, Thor_59
- Track 5 : Budgie_49
- Track 6 : Nivrat_77, LilMoolah_79
- Track 7 : Frankie_89, Harley_90
- Track 8 : SimranZ1_80
- Track 9 : Che8_84
- Track 10 : Demsculpinboyz_95, Moonbeam_88, Sabbb_89, Bagrid_71, Rialto_91, Rearden_73, EricMillard_71, Pollywog_87
- Track 11 : Pound_73
- Track 12 : Optimus_76, Jant_85
- Track 13 : Thibault_64

Summary of Final Annotations (See graph section above for start numbers):

The start number called the most often in the published annotations is 16, it was called in 20 of the 22 non-draft genes in the pham.

Genes that call this "Most Annotated" start:

- Alsfro_66, Bagrid_71, Blue_59, Budgie_49, Che8_84, Demsculpinboyz_95, EricMillard_71, Frankie_89, Harley_90, Jant_85, LilMoolah_79, Moonbeam_88, Nivrat_77, Optimus_76, Pollywog_87, Rearden_73, Rialto_91, Sabbb_89, SarFire_59, SimranZ1_80, TheloniousMonk_63, Thibault_64, Thor_59,

Genes that have the "Most Annotated" start but do not call it:

- Alvin_60, Pound_73,

Genes that do not have the "Most Annotated" start:

-

Summary by start number:

Start 10:

- Found in 1 of 25 (4.0%) of genes in pham
- Manual Annotations of this start: 1 of 22
- Called 100.0% of time when present
- Phage (with cluster) where this start called: Pound_73 (J),

Start 16:

- Found in 25 of 25 (100.0%) of genes in pham
- Manual Annotations of this start: 20 of 22
- Called 92.0% of time when present
- Phage (with cluster) where this start called: Alsfro_66 (A1), Bagrid_71 (J), Blue_59 (A1), Budgie_49 (E), Che8_84 (F1), Demsculpinboyz_95 (F2), EricMillard_71 (J), Frankie_89 (F1), Harley_90 (F1), Jant_85 (F1), LilMoolah_79 (F1), Moonbeam_88 (F1), Nivrat_77 (F1), Optimus_76 (J), Pollywog_87 (F1), Rearden_73 (J), Rialto_91 (F1), Sabbb_89 (F1), SarFire_59 (A1), SimranZ1_80 (F1), TheloniousMonk_63 (A1), Thibault_64 (J), Thor_59 (A1),

Start 17:

- Found in 19 of 25 (76.0%) of genes in pham
- Manual Annotations of this start: 1 of 22
- Called 5.3% of time when present
- Phage (with cluster) where this start called: Alvin_60 (A1),

Summary by clusters:

There are 5 clusters represented in this pham: A1, F1, F2, J, E,

Info for manual annotations of cluster A1:

- Start number 16 was manually annotated 5 times for cluster A1.
- Start number 17 was manually annotated 1 time for cluster A1.

Info for manual annotations of cluster E:

- Start number 16 was manually annotated 1 time for cluster E.

Info for manual annotations of cluster F1:

- Start number 16 was manually annotated 10 times for cluster F1.

Info for manual annotations of cluster F2:

- Start number 16 was manually annotated 1 time for cluster F2.

Info for manual annotations of cluster J:

- Start number 10 was manually annotated 1 time for cluster J.
- Start number 16 was manually annotated 3 times for cluster J.

Gene Information:

Gene: Alsfro_66 Start: 41096, Stop: 40917, Start Num: 16

Candidate Starts for Alsfro_66:

(Start: 16 @41096 has 20 MA's), (19, 41021), (21, 40949), (23, 40925),

Gene: Alvin_60 Start: 40522, Stop: 40370, Start Num: 17

Candidate Starts for Alvin_60:

(Start: 16 @40552 has 20 MA's), (Start: 17 @40522 has 1 MA's), (18, 40504), (19, 40474), (20, 40417), (21, 40402), (23, 40378),

Gene: Bagrid_71 Start: 49718, Stop: 49536, Start Num: 16

Candidate Starts for Bagrid_71:

(7, 49787), (13, 49751), (Start: 16 @49718 has 20 MA's), (Start: 17 @49688 has 1 MA's), (18, 49670), (19, 49640), (20, 49583), (21, 49568), (23, 49544),

Gene: Blue_59 Start: 41185, Stop: 41003, Start Num: 16

Candidate Starts for Blue_59:

(Start: 16 @41185 has 20 MA's), (Start: 17 @41155 has 1 MA's), (18, 41137), (19, 41107), (20, 41050), (21, 41035), (23, 41011),

Gene: Budgie_49 Start: 35862, Stop: 35680, Start Num: 16

Candidate Starts for Budgie_49:

(1, 36060), (2, 36039), (Start: 16 @35862 has 20 MA's), (Start: 17 @35832 has 1 MA's), (18, 35814), (19, 35784), (20, 35727), (21, 35712), (23, 35688),

Gene: Che8_84 Start: 49312, Stop: 49491, Start Num: 16

Candidate Starts for Che8_84:

(8, 49243), (14, 49279), (15, 49288), (Start: 16 @49312 has 20 MA's), (19, 49387), (21, 49459), (23, 49483),

Gene: Demsculpinboyz_95 Start: 48539, Stop: 48721, Start Num: 16

Candidate Starts for Demsculpinboyz_95:

(7, 48470), (13, 48506), (Start: 16 @48539 has 20 MA's), (Start: 17 @48569 has 1 MA's), (18, 48587), (19, 48617), (20, 48674), (21, 48689), (23, 48713),

Gene: EricMillard_71 Start: 50571, Stop: 50389, Start Num: 16

Candidate Starts for EricMillard_71:

(7, 50640), (13, 50604), (Start: 16 @50571 has 20 MA's), (Start: 17 @50541 has 1 MA's), (18, 50523), (19, 50493), (20, 50436), (21, 50421), (23, 50397),

Gene: Frankie_89 Start: 50625, Stop: 50804, Start Num: 16

Candidate Starts for Frankie_89:

(12, 50589), (Start: 16 @50625 has 20 MA's), (19, 50700), (21, 50772), (23, 50796),

Gene: Harley_90 Start: 51037, Stop: 51216, Start Num: 16

Candidate Starts for Harley_90:

(12, 51001), (Start: 16 @51037 has 20 MA's), (19, 51112), (21, 51184), (23, 51208),

Gene: Jant_85 Start: 48431, Stop: 48613, Start Num: 16

Candidate Starts for Jant_85:

(Start: 16 @48431 has 20 MA's), (Start: 17 @48461 has 1 MA's), (18, 48479), (19, 48509), (21, 48581), (23, 48605),

Gene: LilMoolah_79 Start: 48867, Stop: 49046, Start Num: 16

Candidate Starts for LilMoolah_79:

(Start: 16 @48867 has 20 MA's), (Start: 17 @48894 has 1 MA's), (19, 48942), (21, 49014), (23, 49038),

Gene: Moonbeam_88 Start: 50964, Stop: 51146, Start Num: 16

Candidate Starts for Moonbeam_88:

(7, 50895), (13, 50931), (Start: 16 @50964 has 20 MA's), (Start: 17 @50994 has 1 MA's), (18, 51012), (19, 51042), (20, 51099), (21, 51114), (23, 51138),

Gene: Nivrat_77 Start: 48740, Stop: 48919, Start Num: 16

Candidate Starts for Nivrat_77:

(Start: 16 @48740 has 20 MA's), (Start: 17 @48767 has 1 MA's), (19, 48815), (21, 48887), (23, 48911),

Gene: Optimus_76 Start: 51286, Stop: 51104, Start Num: 16

Candidate Starts for Optimus_76:

(Start: 16 @51286 has 20 MA's), (Start: 17 @51256 has 1 MA's), (18, 51238), (19, 51208), (21, 51136), (23, 51112),

Gene: Pollywog_87 Start: 51420, Stop: 51602, Start Num: 16

Candidate Starts for Pollywog_87:

(7, 51351), (13, 51387), (Start: 16 @51420 has 20 MA's), (Start: 17 @51450 has 1 MA's), (18, 51468), (19, 51498), (20, 51555), (21, 51570), (23, 51594),

Gene: Pound_73 Start: 52483, Stop: 52253, Start Num: 10

Candidate Starts for Pound_73:

(3, 52576), (4, 52558), (5, 52531), (6, 52516), (9, 52489), (Start: 10 @52483 has 1 MA's), (11, 52477), (Start: 16 @52435 has 20 MA's), (Start: 17 @52405 has 1 MA's), (18, 52387), (19, 52357), (21, 52285), (23, 52261),

Gene: Rearden_73 Start: 47802, Stop: 47620, Start Num: 16

Candidate Starts for Rearden_73:

(7, 47871), (13, 47835), (Start: 16 @47802 has 20 MA's), (Start: 17 @47772 has 1 MA's), (18, 47754), (19, 47724), (20, 47667), (21, 47652), (23, 47628),

Gene: Rialto_91 Start: 51060, Stop: 51242, Start Num: 16

Candidate Starts for Rialto_91:

(7, 50991), (13, 51027), (Start: 16 @51060 has 20 MA's), (Start: 17 @51090 has 1 MA's), (18, 51108), (19, 51138), (20, 51195), (21, 51210), (23, 51234),

Gene: Sabbb_89 Start: 48615, Stop: 48797, Start Num: 16

Candidate Starts for Sabbb_89:

(7, 48546), (13, 48582), (Start: 16 @48615 has 20 MA's), (Start: 17 @48645 has 1 MA's), (18, 48663), (19, 48693), (20, 48750), (21, 48765), (23, 48789),

Gene: SarFire_59 Start: 40495, Stop: 40313, Start Num: 16

Candidate Starts for SarFire_59:

(Start: 16 @40495 has 20 MA's), (18, 40447), (19, 40417), (20, 40360), (21, 40345), (23, 40321),

Gene: SimranZ1_80 Start: 47949, Stop: 48128, Start Num: 16

Candidate Starts for SimranZ1_80:

(Start: 16 @47949 has 20 MA's), (Start: 17 @47976 has 1 MA's), (19, 48024), (21, 48096), (22, 48111), (23, 48120),

Gene: TheloniousMonk_63 Start: 42762, Stop: 42580, Start Num: 16

Candidate Starts for TheloniousMonk_63:

(Start: 16 @42762 has 20 MA's), (Start: 17 @42732 has 1 MA's), (18, 42714), (19, 42684), (20, 42627), (21, 42612), (23, 42588),

Gene: Thibault_64 Start: 46876, Stop: 46694, Start Num: 16

Candidate Starts for Thibault_64:

(7, 46945), (13, 46909), (Start: 16 @46876 has 20 MA's), (Start: 17 @46846 has 1 MA's), (18, 46828), (19, 46798), (21, 46726), (23, 46702),

Gene: Thor_59 Start: 39853, Stop: 39671, Start Num: 16

Candidate Starts for Thor_59:

(Start: 16 @39853 has 20 MA's), (18, 39805), (19, 39775), (20, 39718), (21, 39703), (23, 39679),