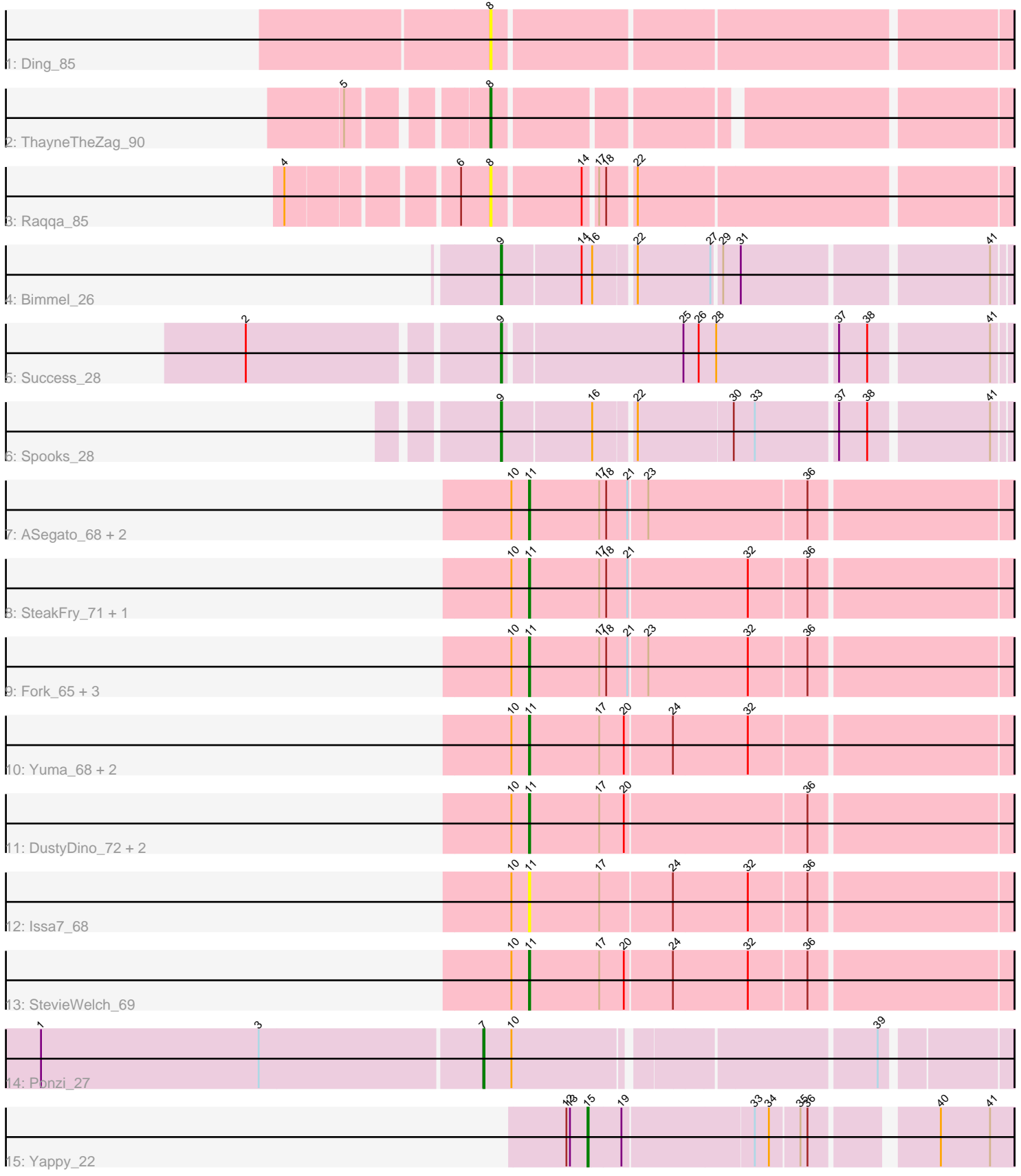


Pham 311957



Note: Tracks are now grouped by subcluster and scaled. Switching in subcluster is indicated by changes in track color. Track scale is now set by default to display the region 30 bp upstream of start 1 to 30 bp downstream of the last possible start. If this default region is judged to be packed too tightly with annotated starts, the track will be further scaled to only show that region of the ORF with annotated starts. This action will be indicated by adding "Zoomed" to the title. For starts, yellow indicates the location of called starts comprised solely of Glimmer/GeneMark auto-annotations, green indicates the location of called starts with at least 1 manual gene annotation.

## Pham 311957 Report

This analysis was run 06/27/26 on database version 652.

Pham number 311957 has 25 members, 4 are drafts.

Phages represented in each track:

- Track 1 : Ding\_85
- Track 2 : ThayneTheZag\_90
- Track 3 : Raqqa\_85
- Track 4 : Bimmel\_26
- Track 5 : Success\_28
- Track 6 : Spooks\_28
- Track 7 : ASegato\_68, Necrophoxinus\_71, Shroomer\_73
- Track 8 : SteakFry\_71, HollowPurple\_70
- Track 9 : Fork\_65, Welcome\_70, Lyell\_69, Musetta\_69
- Track 10 : Yuma\_68, Casablanacas\_70, Deschain\_70
- Track 11 : DustyDino\_72, RunningBrook\_70, Erenyeager\_69
- Track 12 : Issa7\_68
- Track 13 : StevieWelch\_69
- Track 14 : Ponzi\_27
- Track 15 : Yappy\_22

### ***Summary of Final Annotations (See graph section above for start numbers):***

The start number called the most often in the published annotations is 11, it was called in 15 of the 21 non-draft genes in the pham.

Genes that call this "Most Annotated" start:

- ASegato\_68, Casablanacas\_70, Deschain\_70, DustyDino\_72, Erenyeager\_69, Fork\_65, HollowPurple\_70, Issa7\_68, Lyell\_69, Musetta\_69, Necrophoxinus\_71, RunningBrook\_70, Shroomer\_73, SteakFry\_71, StevieWelch\_69, Welcome\_70, Yuma\_68,

Genes that have the "Most Annotated" start but do not call it:

- 

Genes that do not have the "Most Annotated" start:

- Bimmel\_26, Ding\_85, Ponzi\_27, Raqqa\_85, Spooks\_28, Success\_28, ThayneTheZag\_90, Yappy\_22,

## Summary by start number:

### Start 7:

- Found in 1 of 25 ( 4.0% ) of genes in pham
- Manual Annotations of this start: 1 of 21
- Called 100.0% of time when present
- Phage (with cluster) where this start called: Ponzi\_27 (singleton),

### Start 8:

- Found in 3 of 25 ( 12.0% ) of genes in pham
- Manual Annotations of this start: 1 of 21
- Called 100.0% of time when present
- Phage (with cluster) where this start called: Ding\_85 (AY), Raqqa\_85 (AY), ThayneTheZag\_90 (AY),

### Start 9:

- Found in 3 of 25 ( 12.0% ) of genes in pham
- Manual Annotations of this start: 3 of 21
- Called 100.0% of time when present
- Phage (with cluster) where this start called: Bimmel\_26 (BT), Spooks\_28 (BT), Success\_28 (BT),

### Start 11:

- Found in 17 of 25 ( 68.0% ) of genes in pham
- Manual Annotations of this start: 15 of 21
- Called 100.0% of time when present
- Phage (with cluster) where this start called: ASegato\_68 (ED2), Casablanacas\_70 (ED2), Deschain\_70 (ED2), DustyDino\_72 (ED2), Erenyeager\_69 (ED2), Fork\_65 (ED2), HollowPurple\_70 (ED2), Issa7\_68 (ED2), Lyell\_69 (ED2), Musetta\_69 (ED2), Necrophoxinus\_71 (ED2), RunningBrook\_70 (ED2), Shroomer\_73 (ED2), SteakFry\_71 (ED2), StevieWelch\_69 (ED2), Welcome\_70 (ED2), Yuma\_68 (ED2),

### Start 15:

- Found in 1 of 25 ( 4.0% ) of genes in pham
- Manual Annotations of this start: 1 of 21
- Called 100.0% of time when present
- Phage (with cluster) where this start called: Yappy\_22 (singleton),

## Summary by clusters:

There are 4 clusters represented in this pham: AY, ED2, singleton, BT,

Info for manual annotations of cluster AY:

- Start number 8 was manually annotated 1 time for cluster AY.

Info for manual annotations of cluster BT:

- Start number 9 was manually annotated 3 times for cluster BT.

Info for manual annotations of cluster ED2:

- Start number 11 was manually annotated 15 times for cluster ED2.

### **Gene Information:**

Gene: ASegato\_68 Start: 38232, Stop: 37834, Start Num: 11

Candidate Starts for ASegato\_68:

(10, 38247), (Start: 11 @38232 has 15 MA's), (17, 38172), (18, 38166), (21, 38148), (23, 38133), (36, 38001),

Gene: Bimmel\_26 Start: 18034, Stop: 17636, Start Num: 9

Candidate Starts for Bimmel\_26:

(Start: 9 @18034 has 3 MA's), (14, 17968), (16, 17959), (22, 17929), (27, 17869), (29, 17863), (31, 17848), (41, 17650),

Gene: Casablancas\_70 Start: 37972, Stop: 37574, Start Num: 11

Candidate Starts for Casablancas\_70:

(10, 37987), (Start: 11 @37972 has 15 MA's), (17, 37912), (20, 37891), (24, 37852), (32, 37789),

Gene: Deschain\_70 Start: 38636, Stop: 38238, Start Num: 11

Candidate Starts for Deschain\_70:

(10, 38651), (Start: 11 @38636 has 15 MA's), (17, 38576), (20, 38555), (24, 38516), (32, 38453),

Gene: Ding\_85 Start: 46926, Stop: 47342, Start Num: 8

Candidate Starts for Ding\_85:

(Start: 8 @46926 has 1 MA's),

Gene: DustyDino\_72 Start: 39195, Stop: 38797, Start Num: 11

Candidate Starts for DustyDino\_72:

(10, 39210), (Start: 11 @39195 has 15 MA's), (17, 39135), (20, 39114), (36, 38964),

Gene: Erenyeager\_69 Start: 38227, Stop: 37829, Start Num: 11

Candidate Starts for Erenyeager\_69:

(10, 38242), (Start: 11 @38227 has 15 MA's), (17, 38167), (20, 38146), (36, 37996),

Gene: Fork\_65 Start: 37882, Stop: 37484, Start Num: 11

Candidate Starts for Fork\_65:

(10, 37897), (Start: 11 @37882 has 15 MA's), (17, 37822), (18, 37816), (21, 37798), (23, 37783), (32, 37699), (36, 37651),

Gene: HollowPurple\_70 Start: 38438, Stop: 38040, Start Num: 11

Candidate Starts for HollowPurple\_70:

(10, 38453), (Start: 11 @38438 has 15 MA's), (17, 38378), (18, 38372), (21, 38354), (32, 38255), (36, 38207),

Gene: Issa7\_68 Start: 37889, Stop: 37491, Start Num: 11

Candidate Starts for Issa7\_68:

(10, 37904), (Start: 11 @37889 has 15 MA's), (17, 37829), (24, 37769), (32, 37706), (36, 37658),

Gene: Lyell\_69 Start: 38141, Stop: 37743, Start Num: 11

Candidate Starts for Lyell\_69:

(10, 38156), (Start: 11 @38141 has 15 MA's), (17, 38081), (18, 38075), (21, 38057), (23, 38042), (32, 37958), (36, 37910),

Gene: Musetta\_69 Start: 38602, Stop: 38204, Start Num: 11

Candidate Starts for Musetta\_69:

(10, 38617), (Start: 11 @38602 has 15 MA's), (17, 38542), (18, 38536), (21, 38518), (23, 38503), (32, 38419), (36, 38371),

Gene: Necrophoxinus\_71 Start: 38836, Stop: 38438, Start Num: 11

Candidate Starts for Necrophoxinus\_71:

(10, 38851), (Start: 11 @38836 has 15 MA's), (17, 38776), (18, 38770), (21, 38752), (23, 38737), (36, 38605),

Gene: Ponzi\_27 Start: 16304, Stop: 15894, Start Num: 7

Candidate Starts for Ponzi\_27:

(1, 16676), (3, 16490), (Start: 7 @16304 has 1 MA's), (10, 16280), (39, 15995),

Gene: Raqqa\_85 Start: 47700, Stop: 48110, Start Num: 8

Candidate Starts for Raqqa\_85:

(4, 47547), (6, 47676), (Start: 8 @47700 has 1 MA's), (14, 47772), (17, 47781), (18, 47787), (22, 47808),

Gene: RunningBrook\_70 Start: 39195, Stop: 38797, Start Num: 11

Candidate Starts for RunningBrook\_70:

(10, 39210), (Start: 11 @39195 has 15 MA's), (17, 39135), (20, 39114), (36, 38964),

Gene: Shroomer\_73 Start: 38372, Stop: 37974, Start Num: 11

Candidate Starts for Shroomer\_73:

(10, 38387), (Start: 11 @38372 has 15 MA's), (17, 38312), (18, 38306), (21, 38288), (23, 38273), (36, 38141),

Gene: Spooks\_28 Start: 19049, Stop: 18648, Start Num: 9

Candidate Starts for Spooks\_28:

(Start: 9 @19049 has 3 MA's), (16, 18974), (22, 18944), (30, 18866), (33, 18848), (37, 18782), (38, 18758), (41, 18662),

Gene: SteakFry\_71 Start: 38438, Stop: 38040, Start Num: 11

Candidate Starts for SteakFry\_71:

(10, 38453), (Start: 11 @38438 has 15 MA's), (17, 38378), (18, 38372), (21, 38354), (32, 38255), (36, 38207),

Gene: StevieWelch\_69 Start: 38227, Stop: 37829, Start Num: 11

Candidate Starts for StevieWelch\_69:

(10, 38242), (Start: 11 @38227 has 15 MA's), (17, 38167), (20, 38146), (24, 38107), (32, 38044), (36, 37996),

Gene: Success\_28 Start: 18270, Stop: 17863, Start Num: 9

Candidate Starts for Success\_28:

(2, 18471), (Start: 9 @18270 has 3 MA's), (25, 18123), (26, 18111), (28, 18096), (37, 17997), (38, 17973), (41, 17877),

Gene: ThayneTheZag\_90 Start: 48316, Stop: 48714, Start Num: 8

Candidate Starts for ThayneTheZag\_90:

(5, 48217), (Start: 8 @48316 has 1 MA's),

Gene: Welcome\_70 Start: 38587, Stop: 38189, Start Num: 11

Candidate Starts for Welcome\_70:

(10, 38602), (Start: 11 @38587 has 15 MA's), (17, 38527), (18, 38521), (21, 38503), (23, 38488), (32, 38404), (36, 38356),

Gene: Yappy\_22 Start: 6722, Stop: 7054, Start Num: 15

Candidate Starts for Yappy\_22:

(12, 6704), (13, 6707), (Start: 15 @6722 has 1 MA's), (19, 6749), (33, 6857), (34, 6869), (35, 6893), (36, 6899), (40, 6992), (41, 7034),

Gene: Yuma\_68 Start: 38156, Stop: 37758, Start Num: 11

Candidate Starts for Yuma\_68:

(10, 38171), (Start: 11 @38156 has 15 MA's), (17, 38096), (20, 38075), (24, 38036), (32, 37973),