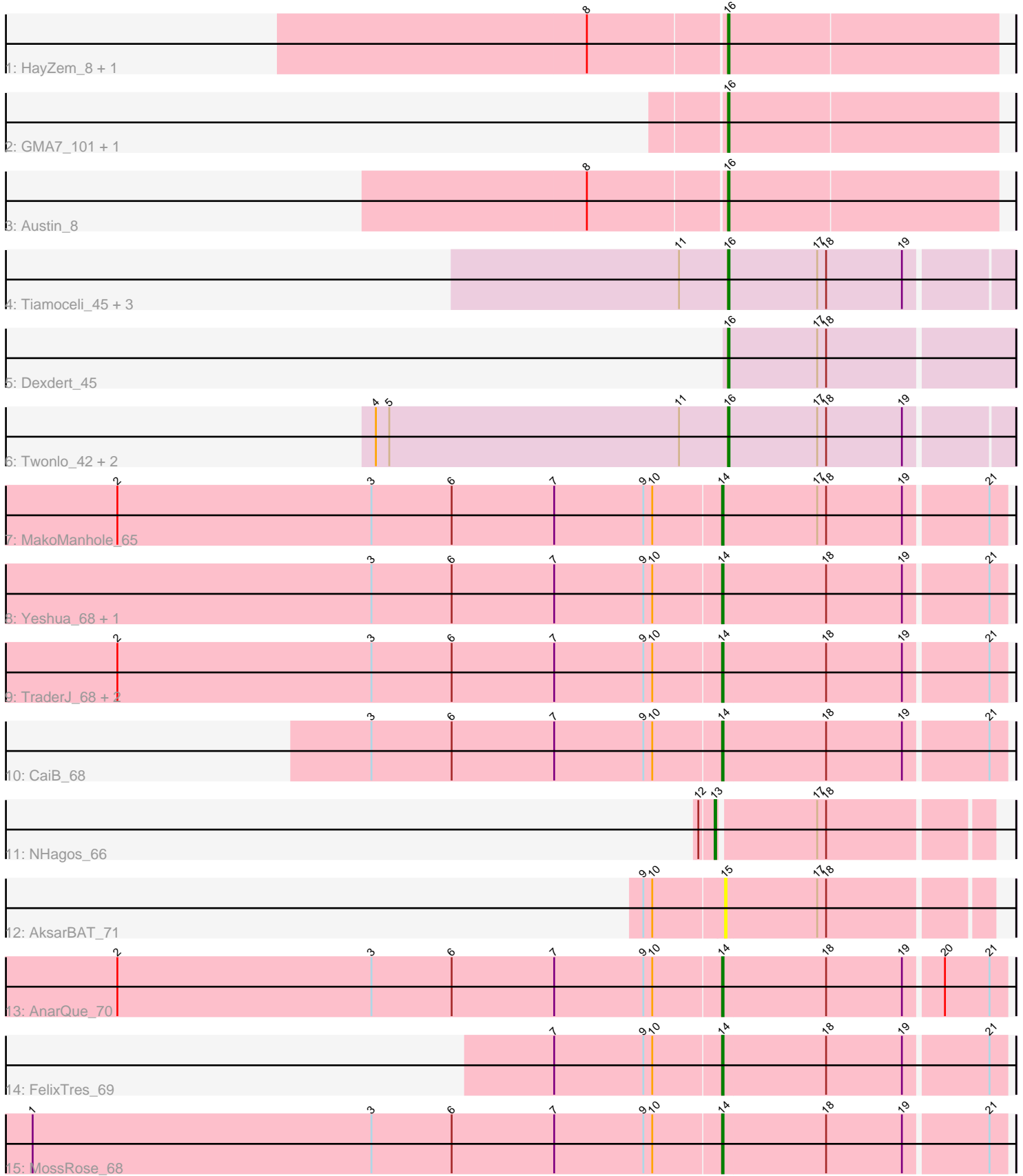


# Pham 311958



Note: Tracks are now grouped by subcluster and scaled. Switching in subcluster is indicated by changes in track color. Track scale is now set by default to display the region 30 bp upstream of start 1 to 30 bp downstream of the last possible start. If this default region is judged to be packed too tightly with annotated starts, the track will be further scaled to only show that region of the ORF with annotated starts. This action will be indicated by adding "Zoomed" to the title. For starts, yellow indicates the location of called starts comprised solely of Glimmer/GeneMark auto-annotations, green indicates the location of called starts with at least 1 manual gene annotation.

## Pham 311958 Report

This analysis was run 06/27/26 on database version 652.

Pham number 311958 has 25 members, 6 are drafts.

Phages represented in each track:

- Track 1 : HayZem\_8, GTE7\_101
- Track 2 : GMA7\_101, Amore2\_8
- Track 3 : Austin\_8
- Track 4 : Tiamoceli\_45, Chickadee\_44, Kwekel\_44, GTE6\_44
- Track 5 : Dexdert\_45
- Track 6 : Twonlo\_42, RoadKill\_42, EdmundFerry\_43
- Track 7 : MakoManhole\_65
- Track 8 : Yeshua\_68, Wooper\_69
- Track 9 : TraderJ\_68, CloverMinnie\_67, Blackpen\_67
- Track 10 : CaiB\_68
- Track 11 : NHagos\_66
- Track 12 : AksarBAT\_71
- Track 13 : AnarQue\_70
- Track 14 : FelixTres\_69
- Track 15 : MossRose\_68

### ***Summary of Final Annotations (See graph section above for start numbers):***

The start number called the most often in the published annotations is 16, it was called in 10 of the 19 non-draft genes in the pham.

Genes that call this "Most Annotated" start:

- Amore2\_8, Austin\_8, Chickadee\_44, Dexdert\_45, EdmundFerry\_43, GMA7\_101, GTE6\_44, GTE7\_101, HayZem\_8, Kwekel\_44, RoadKill\_42, Tiamoceli\_45, Twonlo\_42,

Genes that have the "Most Annotated" start but do not call it:

- 

Genes that do not have the "Most Annotated" start:

- AksarBAT\_71, AnarQue\_70, Blackpen\_67, CaiB\_68, CloverMinnie\_67, FelixTres\_69, MakoManhole\_65, MossRose\_68, NHagos\_66, TraderJ\_68, Wooper\_69, Yeshua\_68,

## Summary by start number:

### Start 13:

- Found in 1 of 25 ( 4.0% ) of genes in pham
- Manual Annotations of this start: 1 of 19
- Called 100.0% of time when present
- Phage (with cluster) where this start called: NHagos\_66 (DR),

### Start 14:

- Found in 10 of 25 ( 40.0% ) of genes in pham
- Manual Annotations of this start: 8 of 19
- Called 100.0% of time when present
- Phage (with cluster) where this start called: AnarQue\_70 (DR), Blackpen\_67 (DR), CaiB\_68 (DR), CloverMinnie\_67 (DR), FelixTres\_69 (DR), MakoManhole\_65 (DR), MossRose\_68 (DR), TraderJ\_68 (DR), Wooper\_69 (DR), Yeshua\_68 (DR),

### Start 15:

- Found in 1 of 25 ( 4.0% ) of genes in pham
- No Manual Annotations of this start.
- Called 100.0% of time when present
- Phage (with cluster) where this start called: AksarBAT\_71 (DR),

### Start 16:

- Found in 13 of 25 ( 52.0% ) of genes in pham
- Manual Annotations of this start: 10 of 19
- Called 100.0% of time when present
- Phage (with cluster) where this start called: Amore2\_8 (CS1), Austin\_8 (CS1), Chickadee\_44 (DE3), Dexdert\_45 (DE3), EdmundFerry\_43 (DE3), GMA7\_101 (CS1), GTE6\_44 (DE3), GTE7\_101 (CS1), HayZem\_8 (CS1), Kwekel\_44 (DE3), RoadKill\_42 (DE3), Tiamoceli\_45 (DE3), Twonlo\_42 (DE3),

## Summary by clusters:

There are 3 clusters represented in this pham: CS1, DE3, DR,

### Info for manual annotations of cluster CS1:

- Start number 16 was manually annotated 3 times for cluster CS1.

### Info for manual annotations of cluster DE3:

- Start number 16 was manually annotated 7 times for cluster DE3.

### Info for manual annotations of cluster DR:

- Start number 13 was manually annotated 1 time for cluster DR.
- Start number 14 was manually annotated 8 times for cluster DR.

## Gene Information:

Gene: AksarBAT\_71 Start: 54187, Stop: 54357, Start Num: 15

Candidate Starts for AksarBAT\_71:

(9, 54139), (10, 54145), (15, 54187), (17, 54247), (18, 54253),

Gene: Amore2\_8 Start: 4912, Stop: 4733, Start Num: 16

Candidate Starts for Amore2\_8:

(Start: 16 @4912 has 10 MA's),

Gene: AnarQue\_70 Start: 54324, Stop: 54509, Start Num: 14

Candidate Starts for AnarQue\_70:

(2, 53919), (3, 54090), (6, 54144), (7, 54213), (9, 54273), (10, 54279), (Start: 14 @54324 has 8 MA's),  
(18, 54393), (19, 54444), (20, 54468), (21, 54498),

Gene: Austin\_8 Start: 4912, Stop: 4733, Start Num: 16

Candidate Starts for Austin\_8:

(8, 5002), (Start: 16 @4912 has 10 MA's),

Gene: Blackpen\_67 Start: 52778, Stop: 52963, Start Num: 14

Candidate Starts for Blackpen\_67:

(2, 52373), (3, 52544), (6, 52598), (7, 52667), (9, 52727), (10, 52733), (Start: 14 @52778 has 8 MA's),  
(18, 52847), (19, 52898), (21, 52952),

Gene: CaiB\_68 Start: 54123, Stop: 54308, Start Num: 14

Candidate Starts for CaiB\_68:

(3, 53889), (6, 53943), (7, 54012), (9, 54072), (10, 54078), (Start: 14 @54123 has 8 MA's), (18, 54192),  
(19, 54243), (21, 54297),

Gene: Chickadee\_44 Start: 37747, Stop: 37932, Start Num: 16

Candidate Starts for Chickadee\_44:

(11, 37714), (Start: 16 @37747 has 10 MA's), (17, 37807), (18, 37813), (19, 37864),

Gene: CloverMinnie\_67 Start: 53286, Stop: 53471, Start Num: 14

Candidate Starts for CloverMinnie\_67:

(2, 52881), (3, 53052), (6, 53106), (7, 53175), (9, 53235), (10, 53241), (Start: 14 @53286 has 8 MA's),  
(18, 53355), (19, 53406), (21, 53460),

Gene: Dextert\_45 Start: 38009, Stop: 38197, Start Num: 16

Candidate Starts for Dextert\_45:

(Start: 16 @38009 has 10 MA's), (17, 38069), (18, 38075),

Gene: EdmundFerry\_43 Start: 37788, Stop: 37973, Start Num: 16

Candidate Starts for EdmundFerry\_43:

(4, 37551), (5, 37560), (11, 37755), (Start: 16 @37788 has 10 MA's), (17, 37848), (18, 37854), (19,  
37905),

Gene: FelixTres\_69 Start: 53578, Stop: 53763, Start Num: 14

Candidate Starts for FelixTres\_69:

(7, 53467), (9, 53527), (10, 53533), (Start: 14 @53578 has 8 MA's), (18, 53647), (19, 53698), (21,  
53752),

Gene: GMA7\_101 Start: 72520, Stop: 72341, Start Num: 16

Candidate Starts for GMA7\_101:

(Start: 16 @72520 has 10 MA's),

Gene: GTE6\_44 Start: 38280, Stop: 38465, Start Num: 16

Candidate Starts for GTE6\_44:

(11, 38247), (Start: 16 @38280 has 10 MA's), (17, 38340), (18, 38346), (19, 38397),

Gene: GTE7\_101 Start: 73517, Stop: 73338, Start Num: 16

Candidate Starts for GTE7\_101:

(8, 73607), (Start: 16 @73517 has 10 MA's),

Gene: HayZem\_8 Start: 4912, Stop: 4733, Start Num: 16

Candidate Starts for HayZem\_8:

(8, 5002), (Start: 16 @4912 has 10 MA's),

Gene: Kwekel\_44 Start: 37708, Stop: 37893, Start Num: 16

Candidate Starts for Kwekel\_44:

(11, 37675), (Start: 16 @37708 has 10 MA's), (17, 37768), (18, 37774), (19, 37825),

Gene: MakoManhole\_65 Start: 52626, Stop: 52811, Start Num: 14

Candidate Starts for MakoManhole\_65:

(2, 52221), (3, 52392), (6, 52446), (7, 52515), (9, 52575), (10, 52581), (Start: 14 @52626 has 8 MA's), (17, 52689), (18, 52695), (19, 52746), (21, 52800),

Gene: MossRose\_68 Start: 53586, Stop: 53771, Start Num: 14

Candidate Starts for MossRose\_68:

(1, 53124), (3, 53352), (6, 53406), (7, 53475), (9, 53535), (10, 53541), (Start: 14 @53586 has 8 MA's), (18, 53655), (19, 53706), (21, 53760),

Gene: NHagos\_66 Start: 52194, Stop: 52367, Start Num: 13

Candidate Starts for NHagos\_66:

(12, 52185), (Start: 13 @52194 has 1 MA's), (17, 52257), (18, 52263),

Gene: RoadKill\_42 Start: 37283, Stop: 37468, Start Num: 16

Candidate Starts for RoadKill\_42:

(4, 37046), (5, 37055), (11, 37250), (Start: 16 @37283 has 10 MA's), (17, 37343), (18, 37349), (19, 37400),

Gene: Tiamoceli\_45 Start: 38604, Stop: 38789, Start Num: 16

Candidate Starts for Tiamoceli\_45:

(11, 38571), (Start: 16 @38604 has 10 MA's), (17, 38664), (18, 38670), (19, 38721),

Gene: TraderJ\_68 Start: 53712, Stop: 53897, Start Num: 14

Candidate Starts for TraderJ\_68:

(2, 53307), (3, 53478), (6, 53532), (7, 53601), (9, 53661), (10, 53667), (Start: 14 @53712 has 8 MA's), (18, 53781), (19, 53832), (21, 53886),

Gene: Twonlo\_42 Start: 37234, Stop: 37419, Start Num: 16

Candidate Starts for Twonlo\_42:

(4, 36997), (5, 37006), (11, 37201), (Start: 16 @37234 has 10 MA's), (17, 37294), (18, 37300), (19, 37351),

Gene: Wooper\_69 Start: 53657, Stop: 53842, Start Num: 14

Candidate Starts for Wooper\_69:

(3, 53423), (6, 53477), (7, 53546), (9, 53606), (10, 53612), (Start: 14 @53657 has 8 MA's), (18, 53726), (19, 53777), (21, 53831),

Gene: Yeshua\_68 Start: 53634, Stop: 53819, Start Num: 14

Candidate Starts for Yeshua\_68:

(3, 53400), (6, 53454), (7, 53523), (9, 53583), (10, 53589), (Start: 14 @53634 has 8 MA's), (18, 53703),  
(19, 53754), (21, 53808),