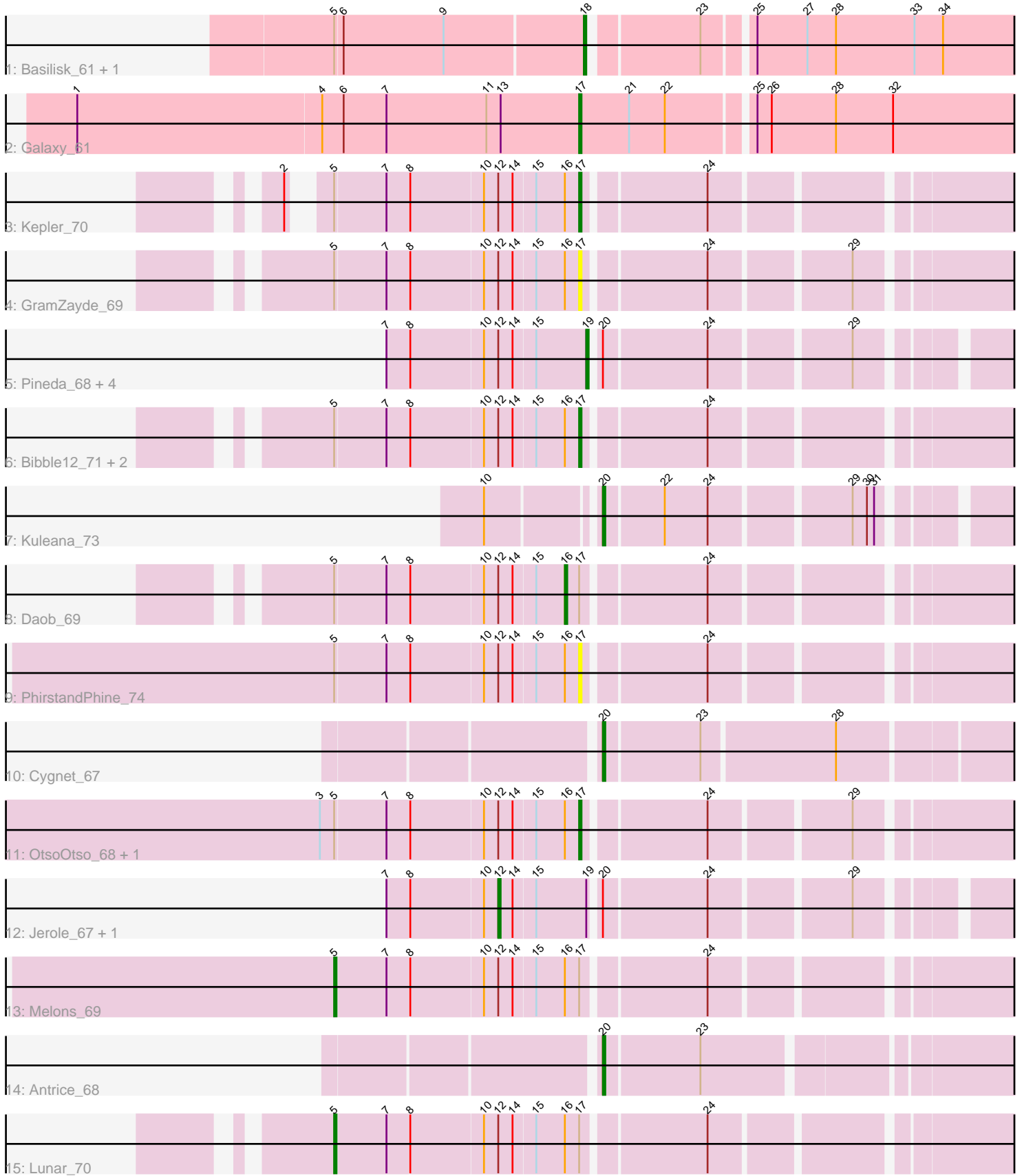


Pham 311963



Note: Tracks are now grouped by subcluster and scaled. Switching in subcluster is indicated by changes in track color. Track scale is now set by default to display the region 30 bp upstream of start 1 to 30 bp downstream of the last possible start. If this default region is judged to be packed too tightly with annotated starts, the track will be further scaled to only show that region of the ORF with annotated starts. This action will be indicated by adding "Zoomed" to the title. For starts, yellow indicates the location of called starts comprised solely of Glimmer/GeneMark auto-annotations, green indicates the location of called starts with at least 1 manual gene annotation.

Pham 311963 Report

This analysis was run 06/27/26 on database version 652.

Pham number 311963 has 24 members, 5 are drafts.

Phages represented in each track:

- Track 1 : Basilisk_61, Ruchi_60
- Track 2 : Galaxy_61
- Track 3 : Kepler_70
- Track 4 : GramZayde_69
- Track 5 : Pineda_68, Colusalem_68, Bedetta_72, Amelia_68, Damocles_71
- Track 6 : Bibble12_71, Cote_71, Coral_69
- Track 7 : Kuleana_73
- Track 8 : Daob_69
- Track 9 : PhirstandPhine_74
- Track 10 : Cygnet_67
- Track 11 : OtsoOtso_68, Polka_67
- Track 12 : Jerole_67, HannahPhantana_69
- Track 13 : Melons_69
- Track 14 : Antrice_68
- Track 15 : Lunar_70

Summary of Final Annotations (See graph section above for start numbers):

The start number called the most often in the published annotations is 17, it was called in 6 of the 19 non-draft genes in the pham.

Genes that call this "Most Annotated" start:

- Bibble12_71, Coral_69, Cote_71, Galaxy_61, GramZayde_69, Kepler_70, OtsoOtso_68, PhirstandPhine_74, Polka_67,

Genes that have the "Most Annotated" start but do not call it:

- Daob_69, Lunar_70, Melons_69,

Genes that do not have the "Most Annotated" start:

- Amelia_68, Antrice_68, Basilisk_61, Bedetta_72, Colusalem_68, Cygnet_67, Damocles_71, HannahPhantana_69, Jerole_67, Kuleana_73, Pineda_68, Ruchi_60,

Summary by start number:

Start 5:

- Found in 13 of 24 (54.2%) of genes in pham
- Manual Annotations of this start: 2 of 19
- Called 15.4% of time when present
- Phage (with cluster) where this start called: Lunar_70 (AS2), Melons_69 (AS2),

Start 12:

- Found in 18 of 24 (75.0%) of genes in pham
- Manual Annotations of this start: 2 of 19
- Called 11.1% of time when present
- Phage (with cluster) where this start called: HannahPhantana_69 (AS2), Jerole_67 (AS2),

Start 16:

- Found in 11 of 24 (45.8%) of genes in pham
- Manual Annotations of this start: 1 of 19
- Called 9.1% of time when present
- Phage (with cluster) where this start called: Daob_69 (AS2),

Start 17:

- Found in 12 of 24 (50.0%) of genes in pham
- Manual Annotations of this start: 6 of 19
- Called 75.0% of time when present
- Phage (with cluster) where this start called: Bibble12_71 (AS2), Coral_69 (AS2), Cote_71 (AS2), Galaxy_61 (AS1), GramZayde_69 (AS2), Kepler_70 (AS2), OtsoOtso_68 (AS2), PhirstandPhine_74 (AS2), Polka_67 (AS2),

Start 18:

- Found in 2 of 24 (8.3%) of genes in pham
- Manual Annotations of this start: 2 of 19
- Called 100.0% of time when present
- Phage (with cluster) where this start called: Basilisk_61 (AS1), Ruchi_60 (AS1),

Start 19:

- Found in 7 of 24 (29.2%) of genes in pham
- Manual Annotations of this start: 3 of 19
- Called 71.4% of time when present
- Phage (with cluster) where this start called: Amelia_68 (AS2), Bedetta_72 (AS2), Colusalem_68 (AS2), Damocles_71 (AS2), Pineda_68 (AS2),

Start 20:

- Found in 10 of 24 (41.7%) of genes in pham
- Manual Annotations of this start: 3 of 19
- Called 30.0% of time when present
- Phage (with cluster) where this start called: Antrice_68 (AS2), Cygnet_67 (AS2), Kuleana_73 (AS2),

Summary by clusters:

There are 2 clusters represented in this pham: AS2, AS1,

Info for manual annotations of cluster AS1:

- Start number 17 was manually annotated 1 time for cluster AS1.

- Start number 18 was manually annotated 2 times for cluster AS1.

Info for manual annotations of cluster AS2:

- Start number 5 was manually annotated 2 times for cluster AS2.
- Start number 12 was manually annotated 2 times for cluster AS2.
- Start number 16 was manually annotated 1 time for cluster AS2.
- Start number 17 was manually annotated 5 times for cluster AS2.
- Start number 19 was manually annotated 3 times for cluster AS2.
- Start number 20 was manually annotated 3 times for cluster AS2.

Gene Information:

Gene: Amelia_68 Start: 36968, Stop: 37153, Start Num: 19

Candidate Starts for Amelia_68:

(7, 36887), (8, 36896), (10, 36926), (Start: 12 @36932 has 2 MA's), (14, 36938), (15, 36947), (Start: 19 @36968 has 3 MA's), (Start: 20 @36971 has 3 MA's), (24, 37013), (29, 37067),

Gene: Antrice_68 Start: 37239, Stop: 37424, Start Num: 20

Candidate Starts for Antrice_68:

(Start: 20 @37239 has 3 MA's), (23, 37278),

Gene: Basilisk_61 Start: 37058, Stop: 37255, Start Num: 18

Candidate Starts for Basilisk_61:

(Start: 5 @36956 has 2 MA's), (6, 36959), (9, 37001), (Start: 18 @37058 has 2 MA's), (23, 37100), (25, 37118), (27, 37139), (28, 37151), (33, 37184), (34, 37196),

Gene: Bedetta_72 Start: 37131, Stop: 37316, Start Num: 19

Candidate Starts for Bedetta_72:

(7, 37050), (8, 37059), (10, 37089), (Start: 12 @37095 has 2 MA's), (14, 37101), (15, 37110), (Start: 19 @37131 has 3 MA's), (Start: 20 @37134 has 3 MA's), (24, 37176), (29, 37230),

Gene: Bible12_71 Start: 37260, Stop: 37454, Start Num: 17

Candidate Starts for Bible12_71:

(Start: 5 @37161 has 2 MA's), (7, 37182), (8, 37191), (10, 37221), (Start: 12 @37227 has 2 MA's), (14, 37233), (15, 37242), (Start: 16 @37254 has 1 MA's), (Start: 17 @37260 has 6 MA's), (24, 37308),

Gene: Colusalem_68 Start: 36945, Stop: 37130, Start Num: 19

Candidate Starts for Colusalem_68:

(7, 36864), (8, 36873), (10, 36903), (Start: 12 @36909 has 2 MA's), (14, 36915), (15, 36924), (Start: 19 @36945 has 3 MA's), (Start: 20 @36948 has 3 MA's), (24, 36990), (29, 37044),

Gene: Coral_69 Start: 37151, Stop: 37345, Start Num: 17

Candidate Starts for Coral_69:

(Start: 5 @37052 has 2 MA's), (7, 37073), (8, 37082), (10, 37112), (Start: 12 @37118 has 2 MA's), (14, 37124), (15, 37133), (Start: 16 @37145 has 1 MA's), (Start: 17 @37151 has 6 MA's), (24, 37199),

Gene: Cote_71 Start: 37603, Stop: 37797, Start Num: 17

Candidate Starts for Cote_71:

(Start: 5 @37504 has 2 MA's), (7, 37525), (8, 37534), (10, 37564), (Start: 12 @37570 has 2 MA's), (14, 37576), (15, 37585), (Start: 16 @37597 has 1 MA's), (Start: 17 @37603 has 6 MA's), (24, 37651),

Gene: Cygnet_67 Start: 37729, Stop: 37917, Start Num: 20

Candidate Starts for Cygnet_67:

(Start: 20 @37729 has 3 MA's), (23, 37768), (28, 37822),

Gene: Damocles_71 Start: 37104, Stop: 37289, Start Num: 19

Candidate Starts for Damocles_71:

(7, 37023), (8, 37032), (10, 37062), (Start: 12 @37068 has 2 MA's), (14, 37074), (15, 37083), (Start: 19 @37104 has 3 MA's), (Start: 20 @37107 has 3 MA's), (24, 37149), (29, 37203),

Gene: Daob_69 Start: 36940, Stop: 37140, Start Num: 16

Candidate Starts for Daob_69:

(Start: 5 @36847 has 2 MA's), (7, 36868), (8, 36877), (10, 36907), (Start: 12 @36913 has 2 MA's), (14, 36919), (15, 36928), (Start: 16 @36940 has 1 MA's), (Start: 17 @36946 has 6 MA's), (24, 36994),

Gene: Galaxy_61 Start: 36357, Stop: 36563, Start Num: 17

Candidate Starts for Galaxy_61:

(1, 36147), (4, 36249), (6, 36258), (7, 36276), (11, 36318), (13, 36324), (Start: 17 @36357 has 6 MA's), (21, 36378), (22, 36393), (25, 36426), (26, 36432), (28, 36459), (32, 36483),

Gene: GramZayde_69 Start: 37432, Stop: 37620, Start Num: 17

Candidate Starts for GramZayde_69:

(Start: 5 @37333 has 2 MA's), (7, 37354), (8, 37363), (10, 37393), (Start: 12 @37399 has 2 MA's), (14, 37405), (15, 37414), (Start: 16 @37426 has 1 MA's), (Start: 17 @37432 has 6 MA's), (24, 37480), (29, 37534),

Gene: HannahPhantana_69 Start: 36927, Stop: 37148, Start Num: 12

Candidate Starts for HannahPhantana_69:

(7, 36882), (8, 36891), (10, 36921), (Start: 12 @36927 has 2 MA's), (14, 36933), (15, 36942), (Start: 19 @36963 has 3 MA's), (Start: 20 @36966 has 3 MA's), (24, 37008), (29, 37062),

Gene: Jerole_67 Start: 37051, Stop: 37272, Start Num: 12

Candidate Starts for Jerole_67:

(7, 37006), (8, 37015), (10, 37045), (Start: 12 @37051 has 2 MA's), (14, 37057), (15, 37066), (Start: 19 @37087 has 3 MA's), (Start: 20 @37090 has 3 MA's), (24, 37132), (29, 37186),

Gene: Kepler_70 Start: 36934, Stop: 37122, Start Num: 17

Candidate Starts for Kepler_70:

(2, 36826), (Start: 5 @36835 has 2 MA's), (7, 36856), (8, 36865), (10, 36895), (Start: 12 @36901 has 2 MA's), (14, 36907), (15, 36916), (Start: 16 @36928 has 1 MA's), (Start: 17 @36934 has 6 MA's), (24, 36982),

Gene: Kuleana_73 Start: 37808, Stop: 37984, Start Num: 20

Candidate Starts for Kuleana_73:

(10, 37766), (Start: 20 @37808 has 3 MA's), (22, 37832), (24, 37850), (29, 37904), (30, 37910), (31, 37913),

Gene: Lunar_70 Start: 37184, Stop: 37477, Start Num: 5

Candidate Starts for Lunar_70:

(Start: 5 @37184 has 2 MA's), (7, 37205), (8, 37214), (10, 37244), (Start: 12 @37250 has 2 MA's), (14, 37256), (15, 37265), (Start: 16 @37277 has 1 MA's), (Start: 17 @37283 has 6 MA's), (24, 37331),

Gene: Melons_69 Start: 36978, Stop: 37265, Start Num: 5

Candidate Starts for Melons_69:

(Start: 5 @36978 has 2 MA's), (7, 36999), (8, 37008), (10, 37038), (Start: 12 @37044 has 2 MA's), (14, 37050), (15, 37059), (Start: 16 @37071 has 1 MA's), (Start: 17 @37077 has 6 MA's), (24, 37125),

Gene: OtsoOtso_68 Start: 36693, Stop: 36881, Start Num: 17

Candidate Starts for OtsoOtso_68:

(3, 36588), (Start: 5 @36594 has 2 MA's), (7, 36615), (8, 36624), (10, 36654), (Start: 12 @36660 has 2 MA's), (14, 36666), (15, 36675), (Start: 16 @36687 has 1 MA's), (Start: 17 @36693 has 6 MA's), (24, 36741), (29, 36795),

Gene: PhirstandPhine_74 Start: 36879, Stop: 37073, Start Num: 17

Candidate Starts for PhirstandPhine_74:

(Start: 5 @36780 has 2 MA's), (7, 36801), (8, 36810), (10, 36840), (Start: 12 @36846 has 2 MA's), (14, 36852), (15, 36861), (Start: 16 @36873 has 1 MA's), (Start: 17 @36879 has 6 MA's), (24, 36927),

Gene: Pineda_68 Start: 37128, Stop: 37310, Start Num: 19

Candidate Starts for Pineda_68:

(7, 37047), (8, 37056), (10, 37086), (Start: 12 @37092 has 2 MA's), (14, 37098), (15, 37107), (Start: 19 @37128 has 3 MA's), (Start: 20 @37131 has 3 MA's), (24, 37173), (29, 37227),

Gene: Polka_67 Start: 36693, Stop: 36881, Start Num: 17

Candidate Starts for Polka_67:

(3, 36588), (Start: 5 @36594 has 2 MA's), (7, 36615), (8, 36624), (10, 36654), (Start: 12 @36660 has 2 MA's), (14, 36666), (15, 36675), (Start: 16 @36687 has 1 MA's), (Start: 17 @36693 has 6 MA's), (24, 36741), (29, 36795),

Gene: Ruchi_60 Start: 36980, Stop: 37177, Start Num: 18

Candidate Starts for Ruchi_60:

(Start: 5 @36878 has 2 MA's), (6, 36881), (9, 36923), (Start: 18 @36980 has 2 MA's), (23, 37022), (25, 37040), (27, 37061), (28, 37073), (33, 37106), (34, 37118),