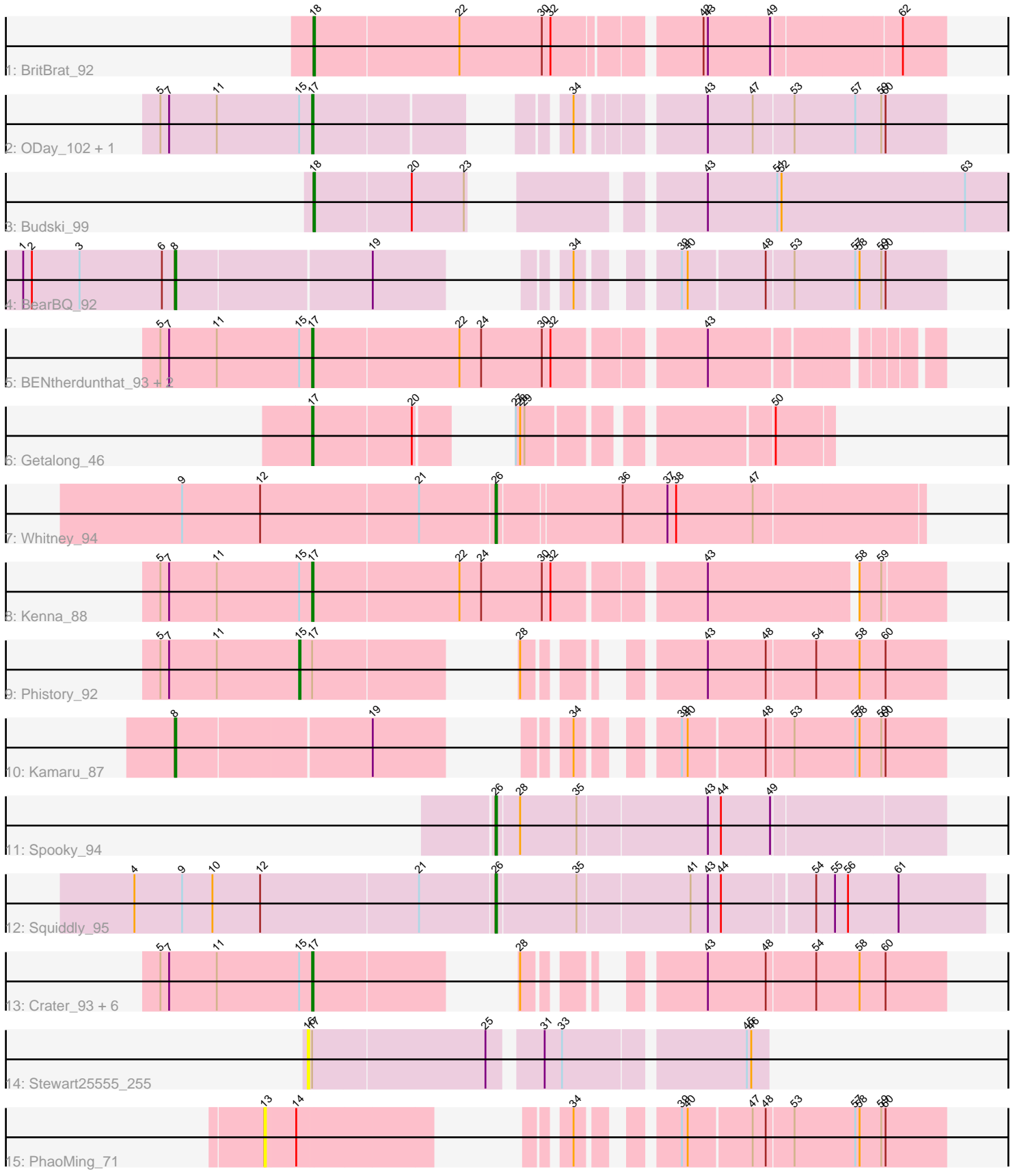


Pham 311975



Note: Tracks are now grouped by subcluster and scaled. Switching in subcluster is indicated by changes in track color. Track scale is now set by default to display the region 30 bp upstream of start 1 to 30 bp downstream of the last possible start. If this default region is judged to be packed too tightly with annotated starts, the track will be further scaled to only show that region of the ORF with annotated starts. This action will be indicated by adding "Zoomed" to the title. For starts, yellow indicates the location of called starts comprised solely of Glimmer/GeneMark auto-annotations, green indicates the location of called starts with at least 1 manual gene annotation.

## Pham 311975 Report

This analysis was run 06/27/26 on database version 652.

Pham number 311975 has 24 members, 3 are drafts.

Phages represented in each track:

- Track 1 : BritBrat\_92
- Track 2 : ODay\_102, MortyNRick\_86
- Track 3 : Budski\_99
- Track 4 : BearBQ\_92
- Track 5 : BENtherdunthat\_93, CheeseTouch\_100, BotCity\_96
- Track 6 : Getalong\_46
- Track 7 : Whitney\_94
- Track 8 : Kenna\_88
- Track 9 : Phistory\_92
- Track 10 : Kamaru\_87
- Track 11 : Spooky\_94
- Track 12 : Squiddly\_95
- Track 13 : Crater\_93, Apricot\_93, Leroy\_94, Horus\_94, Frickyeah\_100, Periwinkle\_102, Ecliptus\_101
- Track 14 : Stewart25555\_255
- Track 15 : PhaoMing\_71

### ***Summary of Final Annotations (See graph section above for start numbers):***

The start number called the most often in the published annotations is 17, it was called in 13 of the 21 non-draft genes in the pham.

Genes that call this "Most Annotated" start:

- Apricot\_93, BENtherdunthat\_93, BotCity\_96, CheeseTouch\_100, Crater\_93, Ecliptus\_101, Frickyeah\_100, Getalong\_46, Horus\_94, Kenna\_88, Leroy\_94, MortyNRick\_86, ODay\_102, Periwinkle\_102,

Genes that have the "Most Annotated" start but do not call it:

- Phistory\_92, Stewart25555\_255,

Genes that do not have the "Most Annotated" start:

- BearBQ\_92, BritBrat\_92, Budski\_99, Kamaru\_87, PhaoMing\_71, Spooky\_94, Squiddly\_95, Whitney\_94,

## Summary by start number:

### Start 8:

- Found in 2 of 24 ( 8.3% ) of genes in pham
- Manual Annotations of this start: 2 of 21
- Called 100.0% of time when present
- Phage (with cluster) where this start called: BearBQ\_92 (DN), Kamaru\_87 (DN1),

### Start 13:

- Found in 1 of 24 ( 4.2% ) of genes in pham
- No Manual Annotations of this start.
- Called 100.0% of time when present
- Phage (with cluster) where this start called: PhaoMing\_71 (UNK),

### Start 15:

- Found in 14 of 24 ( 58.3% ) of genes in pham
- Manual Annotations of this start: 1 of 21
- Called 7.1% of time when present
- Phage (with cluster) where this start called: Phistory\_92 (DN1),

### Start 16:

- Found in 1 of 24 ( 4.2% ) of genes in pham
- No Manual Annotations of this start.
- Called 100.0% of time when present
- Phage (with cluster) where this start called: Stewart25555\_255 (FC),

### Start 17:

- Found in 16 of 24 ( 66.7% ) of genes in pham
- Manual Annotations of this start: 13 of 21
- Called 87.5% of time when present
- Phage (with cluster) where this start called: Apricot\_93 (DN3), BENtherdunthat\_93 (DN1), BotCity\_96 (DN), CheeseTouch\_100 (DN1), Crater\_93 (DN3), Ecliptus\_101 (DN), Frickyeah\_100 (DN1), Getalong\_46 (DN1), Horus\_94 (DN1), Kenna\_88 (DN1), Leroy\_94 (DN1), MortyNRick\_86 (DN), ODay\_102 (DN), Periwinkle\_102 (DN1),

### Start 18:

- Found in 2 of 24 ( 8.3% ) of genes in pham
- Manual Annotations of this start: 2 of 21
- Called 100.0% of time when present
- Phage (with cluster) where this start called: BritBrat\_92 (CY2), Budski\_99 (DN),

### Start 26:

- Found in 3 of 24 ( 12.5% ) of genes in pham
- Manual Annotations of this start: 3 of 21
- Called 100.0% of time when present
- Phage (with cluster) where this start called: Spooky\_94 (DN2), Squiddly\_95 (DN2), Whitney\_94 (DN1),

## Summary by clusters:

There are 7 clusters represented in this pham: DN, CY2, FC, DN1, DN3, DN2, UNK,

Info for manual annotations of cluster CY2:

- Start number 18 was manually annotated 1 time for cluster CY2.

Info for manual annotations of cluster DN:

- Start number 8 was manually annotated 1 time for cluster DN.
- Start number 17 was manually annotated 4 times for cluster DN.
- Start number 18 was manually annotated 1 time for cluster DN.

Info for manual annotations of cluster DN1:

- Start number 8 was manually annotated 1 time for cluster DN1.
- Start number 15 was manually annotated 1 time for cluster DN1.
- Start number 17 was manually annotated 7 times for cluster DN1.
- Start number 26 was manually annotated 1 time for cluster DN1.

Info for manual annotations of cluster DN2:

- Start number 26 was manually annotated 2 times for cluster DN2.

Info for manual annotations of cluster DN3:

- Start number 17 was manually annotated 2 times for cluster DN3.

### **Gene Information:**

Gene: Apricot\_93 Start: 49480, Stop: 49815, Start Num: 17

Candidate Starts for Apricot\_93:

(5, 49375), (7, 49381), (11, 49414), (Start: 15 @49471 has 1 MA's), (Start: 17 @49480 has 13 MA's), (28, 49570), (43, 49654), (48, 49693), (54, 49726), (58, 49756), (60, 49774),

Gene: BENtherdunthat\_93 Start: 50252, Stop: 50641, Start Num: 17

Candidate Starts for BENtherdunthat\_93:

(5, 50147), (7, 50153), (11, 50186), (Start: 15 @50243 has 1 MA's), (Start: 17 @50252 has 13 MA's), (22, 50351), (24, 50366), (30, 50408), (32, 50414), (43, 50507),

Gene: BearBQ\_92 Start: 51497, Stop: 51925, Start Num: 8

Candidate Starts for BearBQ\_92:

(1, 51392), (2, 51398), (3, 51431), (6, 51488), (Start: 8 @51497 has 2 MA's), (19, 51626), (34, 51701), (39, 51749), (40, 51752), (48, 51803), (53, 51821), (57, 51863), (58, 51866), (59, 51881), (60, 51884),

Gene: BotCity\_96 Start: 51781, Stop: 52170, Start Num: 17

Candidate Starts for BotCity\_96:

(5, 51676), (7, 51682), (11, 51715), (Start: 15 @51772 has 1 MA's), (Start: 17 @51781 has 13 MA's), (22, 51880), (24, 51895), (30, 51937), (32, 51943), (43, 52036),

Gene: BritBrat\_92 Start: 52968, Stop: 53378, Start Num: 18

Candidate Starts for BritBrat\_92:

(Start: 18 @52968 has 2 MA's), (22, 53067), (30, 53124), (32, 53130), (42, 53220), (43, 53223), (49, 53265), (62, 53349),

Gene: Budski\_99 Start: 52736, Stop: 53194, Start Num: 18

Candidate Starts for Budski\_99:

(Start: 18 @52736 has 2 MA's), (20, 52802), (23, 52838), (43, 52952), (51, 53000), (52, 53003), (63, 53129),

Gene: CheeseTouch\_100 Start: 49365, Stop: 49754, Start Num: 17

Candidate Starts for CheeseTouch\_100:

(5, 49260), (7, 49266), (11, 49299), (Start: 15 @49356 has 1 MA's), (Start: 17 @49365 has 13 MA's), (22, 49464), (24, 49479), (30, 49521), (32, 49527), (43, 49620),

Gene: Crater\_93 Start: 49824, Stop: 50159, Start Num: 17

Candidate Starts for Crater\_93:

(5, 49719), (7, 49725), (11, 49758), (Start: 15 @49815 has 1 MA's), (Start: 17 @49824 has 13 MA's), (28, 49914), (43, 49998), (48, 50037), (54, 50070), (58, 50100), (60, 50118),

Gene: Ecliptus\_101 Start: 53023, Stop: 53358, Start Num: 17

Candidate Starts for Ecliptus\_101:

(5, 52918), (7, 52924), (11, 52957), (Start: 15 @53014 has 1 MA's), (Start: 17 @53023 has 13 MA's), (28, 53113), (43, 53197), (48, 53236), (54, 53269), (58, 53299), (60, 53317),

Gene: Frickyeah\_100 Start: 51770, Stop: 52105, Start Num: 17

Candidate Starts for Frickyeah\_100:

(5, 51665), (7, 51671), (11, 51704), (Start: 15 @51761 has 1 MA's), (Start: 17 @51770 has 13 MA's), (28, 51860), (43, 51944), (48, 51983), (54, 52016), (58, 52046), (60, 52064),

Gene: Getalong\_46 Start: 32723, Stop: 33001, Start Num: 17

Candidate Starts for Getalong\_46:

(Start: 17 @32723 has 13 MA's), (20, 32789), (27, 32813), (28, 32816), (29, 32819), (50, 32963),

Gene: Horus\_94 Start: 52045, Stop: 52380, Start Num: 17

Candidate Starts for Horus\_94:

(5, 51940), (7, 51946), (11, 51979), (Start: 15 @52036 has 1 MA's), (Start: 17 @52045 has 13 MA's), (28, 52135), (43, 52219), (48, 52258), (54, 52291), (58, 52321), (60, 52339),

Gene: Kamaru\_87 Start: 49076, Stop: 49504, Start Num: 8

Candidate Starts for Kamaru\_87:

(Start: 8 @49076 has 2 MA's), (19, 49205), (34, 49280), (39, 49328), (40, 49331), (48, 49382), (53, 49400), (57, 49442), (58, 49445), (59, 49460), (60, 49463),

Gene: Kenna\_88 Start: 49368, Stop: 49775, Start Num: 17

Candidate Starts for Kenna\_88:

(5, 49263), (7, 49269), (11, 49302), (Start: 15 @49359 has 1 MA's), (Start: 17 @49368 has 13 MA's), (22, 49467), (24, 49482), (30, 49524), (32, 49530), (43, 49623), (58, 49719), (59, 49734),

Gene: Leroy\_94 Start: 50240, Stop: 50575, Start Num: 17

Candidate Starts for Leroy\_94:

(5, 50135), (7, 50141), (11, 50174), (Start: 15 @50231 has 1 MA's), (Start: 17 @50240 has 13 MA's), (28, 50330), (43, 50414), (48, 50453), (54, 50486), (58, 50516), (60, 50534),

Gene: MortyNRick\_86 Start: 50131, Stop: 50496, Start Num: 17

Candidate Starts for MortyNRick\_86:

(5, 50026), (7, 50032), (11, 50065), (Start: 15 @50122 has 1 MA's), (Start: 17 @50131 has 13 MA's), (34, 50260), (43, 50335), (47, 50365), (53, 50392), (57, 50434), (59, 50452), (60, 50455),

Gene: ODay\_102 Start: 53166, Stop: 53531, Start Num: 17

Candidate Starts for ODay\_102:

(5, 53061), (7, 53067), (11, 53100), (Start: 15 @53157 has 1 MA's), (Start: 17 @53166 has 13 MA's), (34, 53295), (43, 53370), (47, 53400), (53, 53427), (57, 53469), (59, 53487), (60, 53490),

Gene: Periwinkle\_102 Start: 53047, Stop: 53382, Start Num: 17

Candidate Starts for Periwinkle\_102:

(5, 52942), (7, 52948), (11, 52981), (Start: 15 @53038 has 1 MA's), (Start: 17 @53047 has 13 MA's), (28, 53137), (43, 53221), (48, 53260), (54, 53293), (58, 53323), (60, 53341),

Gene: PhaoMing\_71 Start: 45255, Stop: 45614, Start Num: 13

Candidate Starts for PhaoMing\_71:

(13, 45255), (14, 45276), (34, 45390), (39, 45438), (40, 45441), (47, 45483), (48, 45492), (53, 45510), (57, 45552), (58, 45555), (59, 45570), (60, 45573),

Gene: Phistory\_92 Start: 49079, Stop: 49423, Start Num: 15

Candidate Starts for Phistory\_92:

(5, 48983), (7, 48989), (11, 49022), (Start: 15 @49079 has 1 MA's), (Start: 17 @49088 has 13 MA's), (28, 49178), (43, 49262), (48, 49301), (54, 49334), (58, 49364), (60, 49382),

Gene: Spooky\_94 Start: 51519, Stop: 51815, Start Num: 26

Candidate Starts for Spooky\_94:

(Start: 26 @51519 has 3 MA's), (28, 51534), (35, 51573), (43, 51660), (44, 51669), (49, 51702),

Gene: Squiddly\_95 Start: 54461, Stop: 54784, Start Num: 26

Candidate Starts for Squiddly\_95:

(4, 54215), (9, 54248), (10, 54269), (12, 54302), (21, 54410), (Start: 26 @54461 has 3 MA's), (35, 54515), (41, 54590), (43, 54602), (44, 54611), (54, 54671), (55, 54683), (56, 54692), (61, 54725),

Gene: Stewart25555\_255 Start: 165522, Stop: 165815, Start Num: 16

Candidate Starts for Stewart25555\_255:

(16, 165522), (Start: 17 @165525 has 13 MA's), (25, 165642), (31, 165672), (33, 165684), (45, 165801), (46, 165804),

Gene: Whitney\_94 Start: 52783, Stop: 53064, Start Num: 26

Candidate Starts for Whitney\_94:

(9, 52570), (12, 52624), (21, 52732), (Start: 26 @52783 has 3 MA's), (36, 52864), (37, 52894), (38, 52900), (47, 52951),