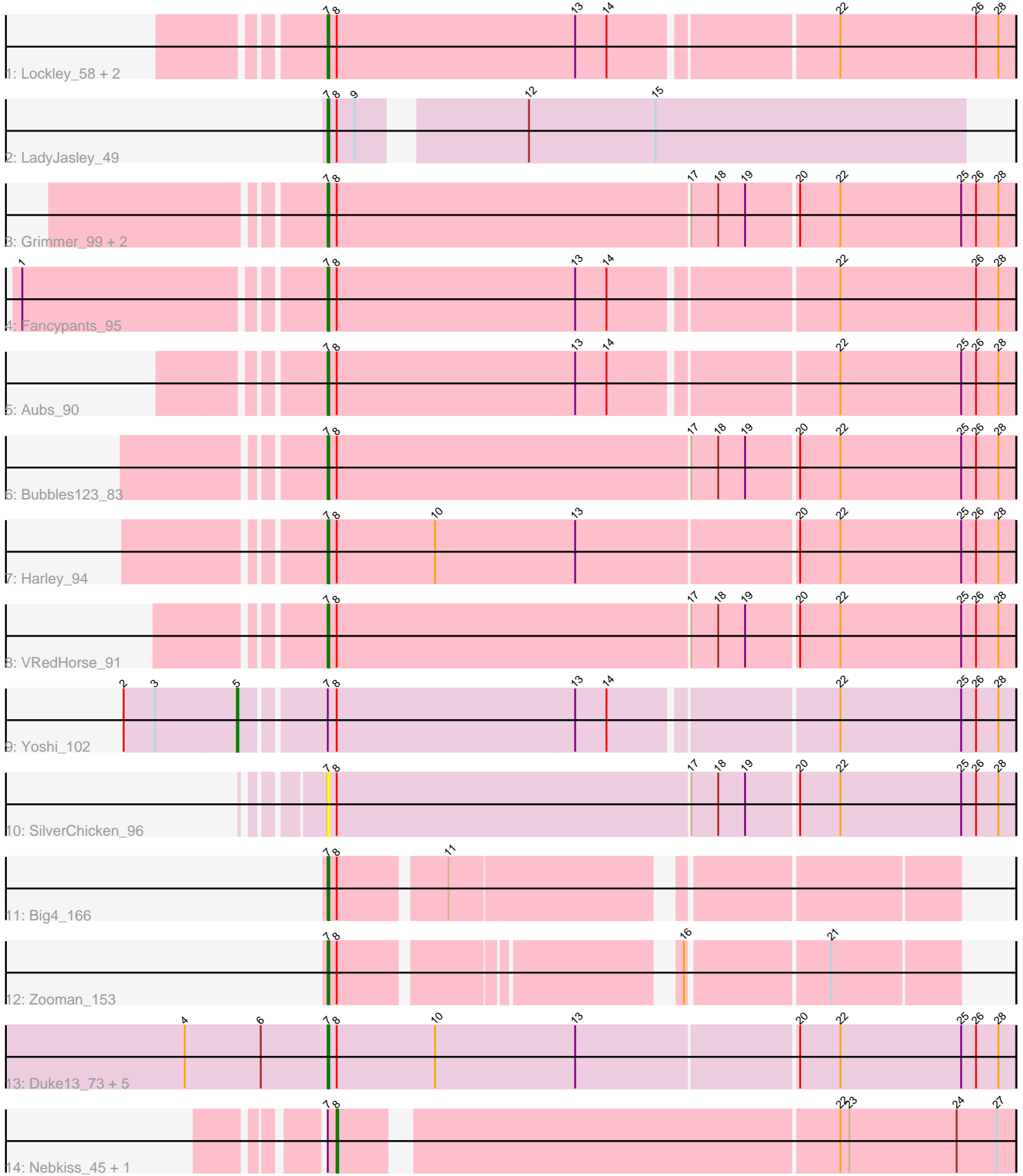


Pham 311978



Note: Tracks are now grouped by subcluster and scaled. Switching in subcluster is indicated by changes in track color. Track scale is now set by default to display the region 30 bp upstream of start 1 to 30 bp downstream of the last possible start. If this default region is judged to be packed too tightly with annotated starts, the track will be further scaled to only show that region of the ORF with annotated starts. This action will be indicated by adding "Zoomed" to the title. For starts, yellow indicates the location of called starts comprised solely of Glimmer/GeneMark auto-annotations, green indicates the location of called starts with at least 1 manual gene annotation.

Pham 311978 Report

This analysis was run 06/27/26 on database version 652.

Pham number 311978 has 24 members, 2 are drafts.

Phages represented in each track:

- Track 1 : Lockley_58, DD5_59, Estave1_98
- Track 2 : LadyJasley_49
- Track 3 : Grimmer_99, Juniper1_84, Mahavrat_85
- Track 4 : Fancypants_95
- Track 5 : Aubs_90
- Track 6 : Bubbles123_83
- Track 7 : Harley_94
- Track 8 : VRedHorse_91
- Track 9 : Yoshi_102
- Track 10 : SilverChicken_96
- Track 11 : Big4_166
- Track 12 : Zooman_153
- Track 13 : Duke13_73, Poenanya_94, Doomphist_94, EleanorGeorge_93, BAKA_75, Latretium_92
- Track 14 : Nebkiss_45, Gaia_44

Summary of Final Annotations (See graph section above for start numbers):

The start number called the most often in the published annotations is 7, it was called in 19 of the 22 non-draft genes in the pham.

Genes that call this "Most Annotated" start:

- Aubs_90, BAKA_75, Big4_166, Bubbles123_83, DD5_59, Doomphist_94, Duke13_73, EleanorGeorge_93, Estave1_98, Fancypants_95, Grimmer_99, Harley_94, Juniper1_84, LadyJasley_49, Latretium_92, Lockley_58, Mahavrat_85, Poenanya_94, SilverChicken_96, VRedHorse_91, Zooman_153,

Genes that have the "Most Annotated" start but do not call it:

- Gaia_44, Nebkiss_45, Yoshi_102,

Genes that do not have the "Most Annotated" start:

-

Summary by start number:

Start 5:

- Found in 1 of 24 (4.2%) of genes in pham
- Manual Annotations of this start: 1 of 22
- Called 100.0% of time when present
- Phage (with cluster) where this start called: Yoshi_102 (F2),

Start 7:

- Found in 24 of 24 (100.0%) of genes in pham
- Manual Annotations of this start: 19 of 22
- Called 87.5% of time when present
- Phage (with cluster) where this start called: Aubs_90 (F1), BAKA_75 (J), Big4_166 (GD2), Bubbles123_83 (F1), DD5_59 (A1), Doomphist_94 (F1), Duke13_73 (J), EleanorGeorge_93 (F1), Estave1_98 (F1), Fancypants_95 (F1), Grimmer_99 (F1), Harley_94 (F1), Juniper1_84 (F1), LadyJasley_49 (AV), Latretium_92 (F1), Lockley_58 (A1), Mahavrat_85 (F1), Poenanya_94 (F1), SilverChicken_96 (F2), VRedHorse_91 (F1), Zooman_153 (GD2),

Start 8:

- Found in 24 of 24 (100.0%) of genes in pham
- Manual Annotations of this start: 2 of 22
- Called 8.3% of time when present
- Phage (with cluster) where this start called: Gaia_44 (X), Nebkiss_45 (X),

Summary by clusters:

There are 7 clusters represented in this pham: F1, F2, J, GD2, A1, AV, X,

Info for manual annotations of cluster A1:

- Start number 7 was manually annotated 2 times for cluster A1.

Info for manual annotations of cluster AV:

- Start number 7 was manually annotated 1 time for cluster AV.

Info for manual annotations of cluster F1:

- Start number 7 was manually annotated 12 times for cluster F1.

Info for manual annotations of cluster F2:

- Start number 5 was manually annotated 1 time for cluster F2.

Info for manual annotations of cluster GD2:

- Start number 7 was manually annotated 2 times for cluster GD2.

Info for manual annotations of cluster J:

- Start number 7 was manually annotated 2 times for cluster J.

Info for manual annotations of cluster X:

- Start number 8 was manually annotated 2 times for cluster X.

Gene Information:

Gene: Aubs_90 Start: 51882, Stop: 52328, Start Num: 7

Candidate Starts for Aubs_90:

(Start: 7 @51882 has 19 MA's), (Start: 8 @51888 has 2 MA's), (13, 52047), (14, 52068), (22, 52212), (25, 52293), (26, 52302), (28, 52317),

Gene: BAKA_75 Start: 50837, Stop: 50385, Start Num: 7

Candidate Starts for BAKA_75:

(4, 50933), (6, 50882), (Start: 7 @50837 has 19 MA's), (Start: 8 @50831 has 2 MA's), (10, 50765), (13, 50672), (20, 50528), (22, 50501), (25, 50420), (26, 50411), (28, 50396),

Gene: Big4_166 Start: 95258, Stop: 95641, Start Num: 7

Candidate Starts for Big4_166:

(Start: 7 @95258 has 19 MA's), (Start: 8 @95264 has 2 MA's), (11, 95330),

Gene: Bubbles123_83 Start: 50379, Stop: 50831, Start Num: 7

Candidate Starts for Bubbles123_83:

(Start: 7 @50379 has 19 MA's), (Start: 8 @50385 has 2 MA's), (17, 50619), (18, 50637), (19, 50655), (20, 50688), (22, 50715), (25, 50796), (26, 50805), (28, 50820),

Gene: DD5_59 Start: 41326, Stop: 40880, Start Num: 7

Candidate Starts for DD5_59:

(Start: 7 @41326 has 19 MA's), (Start: 8 @41320 has 2 MA's), (13, 41161), (14, 41140), (22, 40996), (26, 40906), (28, 40891),

Gene: Doomphist_94 Start: 52288, Stop: 52740, Start Num: 7

Candidate Starts for Doomphist_94:

(4, 52192), (6, 52243), (Start: 7 @52288 has 19 MA's), (Start: 8 @52294 has 2 MA's), (10, 52360), (13, 52453), (20, 52597), (22, 52624), (25, 52705), (26, 52714), (28, 52729),

Gene: Duke13_73 Start: 50049, Stop: 49597, Start Num: 7

Candidate Starts for Duke13_73:

(4, 50145), (6, 50094), (Start: 7 @50049 has 19 MA's), (Start: 8 @50043 has 2 MA's), (10, 49977), (13, 49884), (20, 49740), (22, 49713), (25, 49632), (26, 49623), (28, 49608),

Gene: EleanorGeorge_93 Start: 52555, Stop: 53007, Start Num: 7

Candidate Starts for EleanorGeorge_93:

(4, 52459), (6, 52510), (Start: 7 @52555 has 19 MA's), (Start: 8 @52561 has 2 MA's), (10, 52627), (13, 52720), (20, 52864), (22, 52891), (25, 52972), (26, 52981), (28, 52996),

Gene: Estave1_98 Start: 54897, Stop: 55343, Start Num: 7

Candidate Starts for Estave1_98:

(Start: 7 @54897 has 19 MA's), (Start: 8 @54903 has 2 MA's), (13, 55062), (14, 55083), (22, 55227), (26, 55317), (28, 55332),

Gene: Fancypants_95 Start: 53343, Stop: 53789, Start Num: 7

Candidate Starts for Fancypants_95:

(1, 53154), (Start: 7 @53343 has 19 MA's), (Start: 8 @53349 has 2 MA's), (13, 53508), (14, 53529), (22, 53673), (26, 53763), (28, 53778),

Gene: Gaia_44 Start: 34593, Stop: 34162, Start Num: 8

Candidate Starts for Gaia_44:

(Start: 7 @34599 has 19 MA's), (Start: 8 @34593 has 2 MA's), (22, 34278), (23, 34272), (24, 34200), (27, 34173),

Gene: Grimmer_99 Start: 51464, Stop: 51916, Start Num: 7

Candidate Starts for Grimmer_99:

(Start: 7 @51464 has 19 MA's), (Start: 8 @51470 has 2 MA's), (17, 51704), (18, 51722), (19, 51740), (20, 51773), (22, 51800), (25, 51881), (26, 51890), (28, 51905),

Gene: Harley_94 Start: 52086, Stop: 52538, Start Num: 7

Candidate Starts for Harley_94:

(Start: 7 @52086 has 19 MA's), (Start: 8 @52092 has 2 MA's), (10, 52158), (13, 52251), (20, 52395), (22, 52422), (25, 52503), (26, 52512), (28, 52527),

Gene: Juniper1_84 Start: 50003, Stop: 50455, Start Num: 7

Candidate Starts for Juniper1_84:

(Start: 7 @50003 has 19 MA's), (Start: 8 @50009 has 2 MA's), (17, 50243), (18, 50261), (19, 50279), (20, 50312), (22, 50339), (25, 50420), (26, 50429), (28, 50444),

Gene: LadyJasley_49 Start: 39792, Stop: 39388, Start Num: 7

Candidate Starts for LadyJasley_49:

(Start: 7 @39792 has 19 MA's), (Start: 8 @39786 has 2 MA's), (9, 39774), (12, 39678), (15, 39594),

Gene: Latretium_92 Start: 51340, Stop: 51792, Start Num: 7

Candidate Starts for Latretium_92:

(4, 51244), (6, 51295), (Start: 7 @51340 has 19 MA's), (Start: 8 @51346 has 2 MA's), (10, 51412), (13, 51505), (20, 51649), (22, 51676), (25, 51757), (26, 51766), (28, 51781),

Gene: Lockley_58 Start: 40488, Stop: 40042, Start Num: 7

Candidate Starts for Lockley_58:

(Start: 7 @40488 has 19 MA's), (Start: 8 @40482 has 2 MA's), (13, 40323), (14, 40302), (22, 40158), (26, 40068), (28, 40053),

Gene: Mahavrat_85 Start: 49032, Stop: 49484, Start Num: 7

Candidate Starts for Mahavrat_85:

(Start: 7 @49032 has 19 MA's), (Start: 8 @49038 has 2 MA's), (17, 49272), (18, 49290), (19, 49308), (20, 49341), (22, 49368), (25, 49449), (26, 49458), (28, 49473),

Gene: Nebkiss_45 Start: 34294, Stop: 33863, Start Num: 8

Candidate Starts for Nebkiss_45:

(Start: 7 @34300 has 19 MA's), (Start: 8 @34294 has 2 MA's), (22, 33979), (23, 33973), (24, 33901), (27, 33874),

Gene: Poenanya_94 Start: 52288, Stop: 52740, Start Num: 7

Candidate Starts for Poenanya_94:

(4, 52192), (6, 52243), (Start: 7 @52288 has 19 MA's), (Start: 8 @52294 has 2 MA's), (10, 52360), (13, 52453), (20, 52597), (22, 52624), (25, 52705), (26, 52714), (28, 52729),

Gene: SilverChicken_96 Start: 50852, Stop: 51304, Start Num: 7

Candidate Starts for SilverChicken_96:

(Start: 7 @50852 has 19 MA's), (Start: 8 @50858 has 2 MA's), (17, 51092), (18, 51110), (19, 51128), (20, 51161), (22, 51188), (25, 51269), (26, 51278), (28, 51293),

Gene: VRedHorse_91 Start: 49041, Stop: 49493, Start Num: 7

Candidate Starts for VRedHorse_91:

(Start: 7 @49041 has 19 MA's), (Start: 8 @49047 has 2 MA's), (17, 49281), (18, 49299), (19, 49317), (20, 49350), (22, 49377), (25, 49458), (26, 49467), (28, 49482),

Gene: Yoshi_102 Start: 52079, Stop: 52576, Start Num: 5

Candidate Starts for Yoshi_102:

(2, 52004), (3, 52025), (Start: 5 @52079 has 1 MA's), (Start: 7 @52130 has 19 MA's), (Start: 8 @52136 has 2 MA's), (13, 52295), (14, 52316), (22, 52460), (25, 52541), (26, 52550), (28, 52565),

Gene: Zooman_153 Start: 92856, Stop: 93233, Start Num: 7

Candidate Starts for Zooman_153:

(Start: 7 @92856 has 19 MA's), (Start: 8 @92862 has 2 MA's), (16, 93060), (21, 93150),