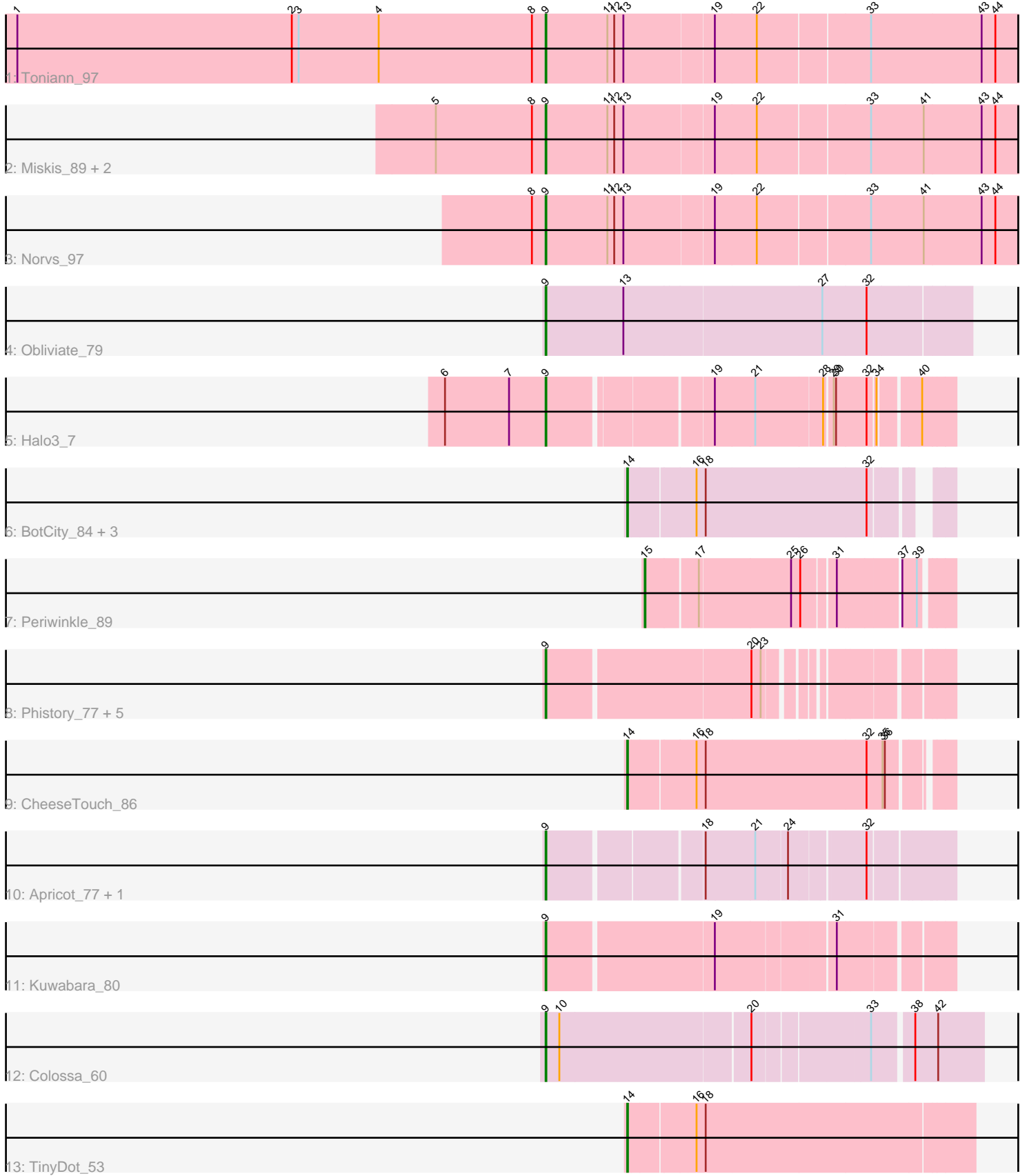


Pham 311981



Note: Tracks are now grouped by subcluster and scaled. Switching in subcluster is indicated by changes in track color. Track scale is now set by default to display the region 30 bp upstream of start 1 to 30 bp downstream of the last possible start. If this default region is judged to be packed too tightly with annotated starts, the track will be further scaled to only show that region of the ORF with annotated starts. This action will be indicated by adding "Zoomed" to the title. For starts, yellow indicates the location of called starts comprised solely of Glimmer/GeneMark auto-annotations, green indicates the location of called starts with at least 1 manual gene annotation.

Pham 311981 Report

This analysis was run 06/27/26 on database version 652.

Pham number 311981 has 24 members, 0 are drafts.

Phages represented in each track:

- Track 1 : Toniann_97
- Track 2 : Miskis_89, Aphelion_96, Dusty_93
- Track 3 : Norvs_97
- Track 4 : Obliviate_79
- Track 5 : Halo3_7
- Track 6 : BotCity_84, Kenna_77, Lutum_83, BENtherdunthat_82
- Track 7 : Periwinkle_89
- Track 8 : Phistory_77, Crater_78, Leroy_79, Pepperoni_56, Horus_80, Ecliptus_84
- Track 9 : CheeseTouch_86
- Track 10 : Apricot_77, Lton_57
- Track 11 : Kuwabara_80
- Track 12 : Colossa_60
- Track 13 : TinyDot_53

Summary of Final Annotations (See graph section above for start numbers):

The start number called the most often in the published annotations is 9, it was called in 17 of the 24 non-draft genes in the pham.

Genes that call this "Most Annotated" start:

- Aphelion_96, Apricot_77, Colossa_60, Crater_78, Dusty_93, Ecliptus_84, Halo3_7, Horus_80, Kuwabara_80, Leroy_79, Lton_57, Miskis_89, Norvs_97, Obliviate_79, Pepperoni_56, Phistory_77, Toniann_97,

Genes that have the "Most Annotated" start but do not call it:

-

Genes that do not have the "Most Annotated" start:

- BENtherdunthat_82, BotCity_84, CheeseTouch_86, Kenna_77, Lutum_83, Periwinkle_89, TinyDot_53,

Summary by start number:

Start 9:

- Found in 17 of 24 (70.8%) of genes in pham
- Manual Annotations of this start: 17 of 24
- Called 100.0% of time when present
- Phage (with cluster) where this start called: Aphelion_96 (CQ1), Apricot_77 (DN3), Colossa_60 (KA), Crater_78 (DN3), Dusty_93 (CQ1), Ecliptus_84 (DN), Halo3_7 (DC1), Horus_80 (DN1), Kuwabara_80 (DN4), Leroy_79 (DN1), Lton_57 (CZ), Miskis_89 (CQ1), Norvs_97 (CQ1), Obliviate_79 (CV), Pepperoni_56 (CZ), Phistory_77 (DN1), Toniann_97 (CQ1),

Start 14:

- Found in 6 of 24 (25.0%) of genes in pham
- Manual Annotations of this start: 6 of 24
- Called 100.0% of time when present
- Phage (with cluster) where this start called: BENtherdunthat_82 (DN1), BotCity_84 (DN), CheeseTouch_86 (DN1), Kenna_77 (DN1), Lutum_83 (DN1), TinyDot_53 (singleton),

Start 15:

- Found in 1 of 24 (4.2%) of genes in pham
- Manual Annotations of this start: 1 of 24
- Called 100.0% of time when present
- Phage (with cluster) where this start called: Periwinkle_89 (DN1),

Summary by clusters:

There are 10 clusters represented in this pham: DN, KA, DN4, singleton, CZ, DN1, DN3, CQ1, CV, DC1,

Info for manual annotations of cluster CQ1:

- Start number 9 was manually annotated 5 times for cluster CQ1.

Info for manual annotations of cluster CV:

- Start number 9 was manually annotated 1 time for cluster CV.

Info for manual annotations of cluster CZ:

- Start number 9 was manually annotated 2 times for cluster CZ.

Info for manual annotations of cluster DC1:

- Start number 9 was manually annotated 1 time for cluster DC1.

Info for manual annotations of cluster DN:

- Start number 9 was manually annotated 1 time for cluster DN.
- Start number 14 was manually annotated 1 time for cluster DN.

Info for manual annotations of cluster DN1:

- Start number 9 was manually annotated 3 times for cluster DN1.
- Start number 14 was manually annotated 4 times for cluster DN1.
- Start number 15 was manually annotated 1 time for cluster DN1.

Info for manual annotations of cluster DN3:

- Start number 9 was manually annotated 2 times for cluster DN3.

Info for manual annotations of cluster DN4:

- Start number 9 was manually annotated 1 time for cluster DN4.

Info for manual annotations of cluster KA:

- Start number 9 was manually annotated 1 time for cluster KA.

Gene Information:

Gene: Aphelion_96 Start: 59234, Stop: 59845, Start Num: 9

Candidate Starts for Aphelion_96:

(5, 59090), (8, 59216), (Start: 9 @59234 has 17 MA's), (11, 59315), (12, 59324), (13, 59336), (19, 59450), (22, 59504), (33, 59645), (41, 59714), (43, 59789), (44, 59807),

Gene: Apricot_77 Start: 44433, Stop: 44912, Start Num: 9

Candidate Starts for Apricot_77:

(Start: 9 @44433 has 17 MA's), (18, 44619), (21, 44682), (24, 44721), (32, 44811),

Gene: BENtherdunthat_82 Start: 46359, Stop: 46736, Start Num: 14

Candidate Starts for BENtherdunthat_82:

(Start: 14 @46359 has 6 MA's), (16, 46440), (18, 46452), (32, 46659),

Gene: BotCity_84 Start: 47888, Stop: 48265, Start Num: 14

Candidate Starts for BotCity_84:

(Start: 14 @47888 has 6 MA's), (16, 47969), (18, 47981), (32, 48188),

Gene: CheeseTouch_86 Start: 42950, Stop: 43342, Start Num: 14

Candidate Starts for CheeseTouch_86:

(Start: 14 @42950 has 6 MA's), (16, 43031), (18, 43043), (32, 43250), (35, 43271), (36, 43274),

Gene: Colossa_60 Start: 39877, Stop: 40413, Start Num: 9

Candidate Starts for Colossa_60:

(Start: 9 @39877 has 17 MA's), (10, 39895), (20, 40135), (33, 40276), (38, 40324), (42, 40354),

Gene: Crater_78 Start: 45182, Stop: 45649, Start Num: 9

Candidate Starts for Crater_78:

(Start: 9 @45182 has 17 MA's), (20, 45437), (23, 45449),

Gene: Dusty_93 Start: 57740, Stop: 58351, Start Num: 9

Candidate Starts for Dusty_93:

(5, 57596), (8, 57722), (Start: 9 @57740 has 17 MA's), (11, 57821), (12, 57830), (13, 57842), (19, 57956), (22, 58010), (33, 58151), (41, 58220), (43, 58295), (44, 58313),

Gene: Ecliptus_84 Start: 48151, Stop: 48618, Start Num: 9

Candidate Starts for Ecliptus_84:

(Start: 9 @48151 has 17 MA's), (20, 48406), (23, 48418),

Gene: Halo3_7 Start: 3546, Stop: 4028, Start Num: 9

Candidate Starts for Halo3_7:

(6, 3414), (7, 3498), (Start: 9 @3546 has 17 MA's), (19, 3744), (21, 3795), (28, 3879), (29, 3888), (30, 3891), (32, 3930), (34, 3939), (40, 3987),

Gene: Horus_80 Start: 47249, Stop: 47716, Start Num: 9

Candidate Starts for Horus_80:

(Start: 9 @47249 has 17 MA's), (20, 47504), (23, 47516),

Gene: Kenna_77 Start: 45632, Stop: 46009, Start Num: 14

Candidate Starts for Kenna_77:

(Start: 14 @45632 has 6 MA's), (16, 45713), (18, 45725), (32, 45932),

Gene: Kuwabara_80 Start: 47595, Stop: 48080, Start Num: 9

Candidate Starts for Kuwabara_80:

(Start: 9 @47595 has 17 MA's), (19, 47805), (31, 47946),

Gene: Leroy_79 Start: 45444, Stop: 45911, Start Num: 9

Candidate Starts for Leroy_79:

(Start: 9 @45444 has 17 MA's), (20, 45699), (23, 45711),

Gene: Lton_57 Start: 34468, Stop: 34947, Start Num: 9

Candidate Starts for Lton_57:

(Start: 9 @34468 has 17 MA's), (18, 34654), (21, 34717), (24, 34756), (32, 34846),

Gene: Lutum_83 Start: 46794, Stop: 47171, Start Num: 14

Candidate Starts for Lutum_83:

(Start: 14 @46794 has 6 MA's), (16, 46875), (18, 46887), (32, 47094),

Gene: Miskis_89 Start: 57403, Stop: 58014, Start Num: 9

Candidate Starts for Miskis_89:

(5, 57259), (8, 57385), (Start: 9 @57403 has 17 MA's), (11, 57484), (12, 57493), (13, 57505), (19, 57619), (22, 57673), (33, 57814), (41, 57883), (43, 57958), (44, 57976),

Gene: Norvs_97 Start: 58732, Stop: 59343, Start Num: 9

Candidate Starts for Norvs_97:

(8, 58714), (Start: 9 @58732 has 17 MA's), (11, 58813), (12, 58822), (13, 58834), (19, 58948), (22, 59002), (33, 59143), (41, 59212), (43, 59287), (44, 59305),

Gene: Oblivate_79 Start: 48067, Stop: 48606, Start Num: 9

Candidate Starts for Oblivate_79:

(Start: 9 @48067 has 17 MA's), (13, 48169), (27, 48421), (32, 48478),

Gene: Pepperoni_56 Start: 35924, Stop: 36391, Start Num: 9

Candidate Starts for Pepperoni_56:

(Start: 9 @35924 has 17 MA's), (20, 36179), (23, 36191),

Gene: Periwinkle_89 Start: 48356, Stop: 48718, Start Num: 15

Candidate Starts for Periwinkle_89:

(Start: 15 @48356 has 1 MA's), (17, 48419), (25, 48536), (26, 48548), (31, 48587), (37, 48662), (39, 48680),

Gene: Phistory_77 Start: 44347, Stop: 44814, Start Num: 9

Candidate Starts for Phistory_77:

(Start: 9 @44347 has 17 MA's), (20, 44602), (23, 44614),

Gene: TinyDot_53 Start: 33756, Stop: 34190, Start Num: 14

Candidate Starts for TinyDot_53:

(Start: 14 @33756 has 6 MA's), (16, 33837), (18, 33849),

Gene: Toniann_97 Start: 58672, Stop: 59283, Start Num: 9

Candidate Starts for Toniann_97:

(1, 57979), (2, 58339), (3, 58348), (4, 58453), (8, 58654), (Start: 9 @58672 has 17 MA's), (11, 58753), (12, 58762), (13, 58774), (19, 58888), (22, 58942), (33, 59083), (43, 59227), (44, 59245),