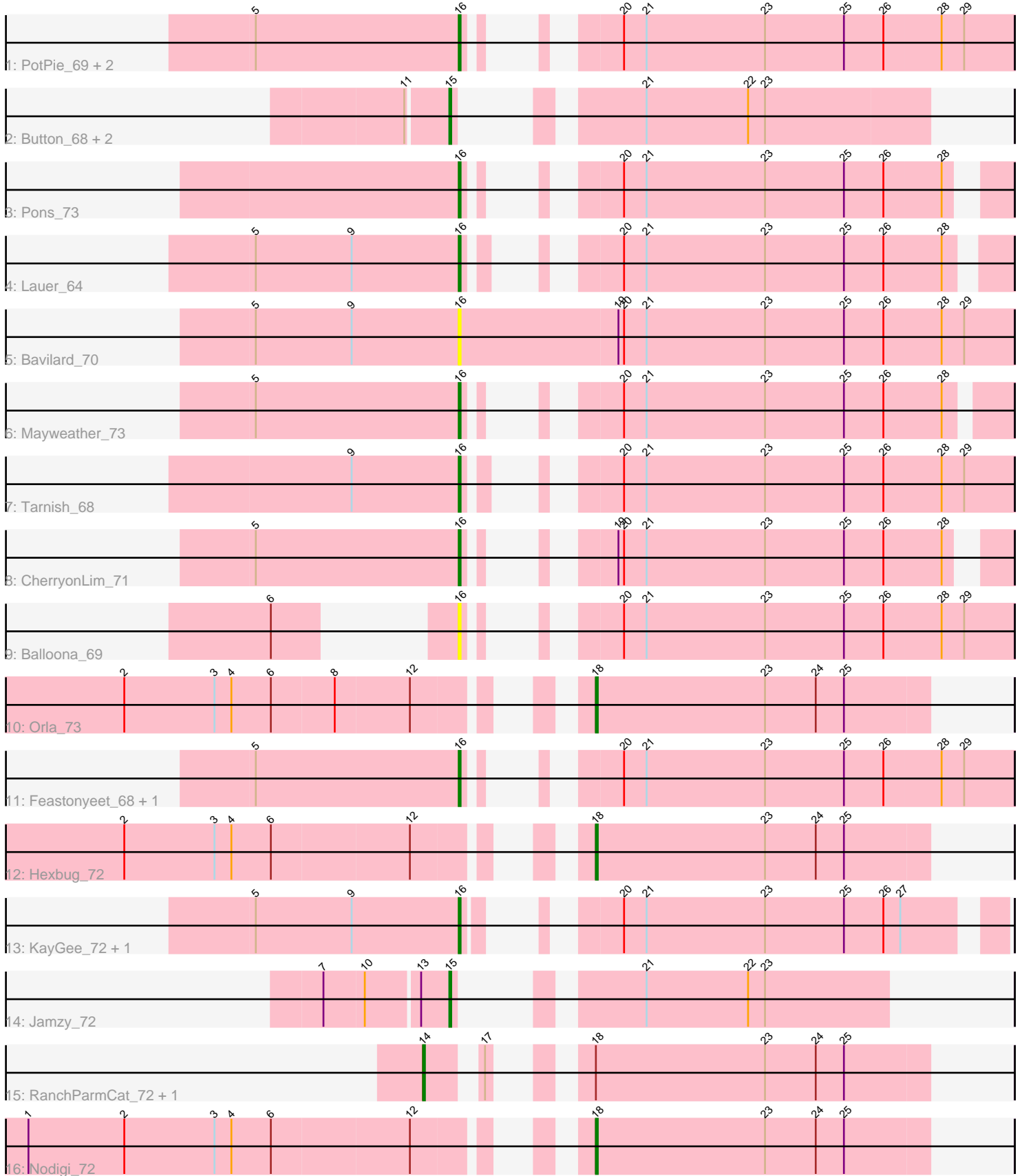


Pham 311997



Note: Tracks are now grouped by subcluster and scaled. Switching in subcluster is indicated by changes in track color. Track scale is now set by default to display the region 30 bp upstream of start 1 to 30 bp downstream of the last possible start. If this default region is judged to be packed too tightly with annotated starts, the track will be further scaled to only show that region of the ORF with annotated starts. This action will be indicated by adding "Zoomed" to the title. For starts, yellow indicates the location of called starts comprised solely of Glimmer/GeneMark auto-annotations, green indicates the location of called starts with at least 1 manual gene annotation.

Pham 311997 Report

This analysis was run 06/27/26 on database version 652.

Pham number 311997 has 23 members, 3 are drafts.

Phages represented in each track:

- Track 1 : PotPie_69, CocoaPuff_68, SummitAcademy_69
- Track 2 : Button_68, Yakult_71, GiKK_72
- Track 3 : Pons_73
- Track 4 : Lauer_64
- Track 5 : Bavidard_70
- Track 6 : Mayweather_73
- Track 7 : Tarnish_68
- Track 8 : CherryonLim_71
- Track 9 : Balloona_69
- Track 10 : Orla_73
- Track 11 : Feastonyeet_68, BigChungus_68
- Track 12 : Hexbug_72
- Track 13 : KayGee_72, Elinal_74
- Track 14 : Jamzy_72
- Track 15 : RanchParmCat_72, Margaret_73
- Track 16 : Nodigi_72

Summary of Final Annotations (See graph section above for start numbers):

The start number called the most often in the published annotations is 16, it was called in 11 of the 20 non-draft genes in the pham.

Genes that call this "Most Annotated" start:

- Balloona_69, Bavidard_70, BigChungus_68, CherryonLim_71, CocoaPuff_68, Elinal_74, Feastonyeet_68, KayGee_72, Lauer_64, Mayweather_73, Pons_73, PotPie_69, SummitAcademy_69, Tarnish_68,

Genes that have the "Most Annotated" start but do not call it:

-

Genes that do not have the "Most Annotated" start:

- Button_68, GiKK_72, Hexbug_72, Jamzy_72, Margaret_73, Nodigi_72, Orla_73, RanchParmCat_72, Yakult_71,

Summary by start number:

Start 14:

- Found in 2 of 23 (8.7%) of genes in pham
- Manual Annotations of this start: 2 of 20
- Called 100.0% of time when present
- Phage (with cluster) where this start called: Margaret_73 (CT), RanchParmCat_72 (CT),

Start 15:

- Found in 4 of 23 (17.4%) of genes in pham
- Manual Annotations of this start: 4 of 20
- Called 100.0% of time when present
- Phage (with cluster) where this start called: Button_68 (CT), GiKK_72 (CT), Jamzy_72 (CT), Yakult_71 (CT),

Start 16:

- Found in 14 of 23 (60.9%) of genes in pham
- Manual Annotations of this start: 11 of 20
- Called 100.0% of time when present
- Phage (with cluster) where this start called: Balloona_69 (CT), Bavidard_70 (CT), BigChungus_68 (CT), CherryonLim_71 (CT), CocoaPuff_68 (CT), Elinal_74 (CT), Feastonyeet_68 (CT), KayGee_72 (CT), Lauer_64 (CT), Mayweather_73 (CT), Pons_73 (CT), PotPie_69 (CT), SummitAcademy_69 (CT), Tarnish_68 (CT),

Start 18:

- Found in 5 of 23 (21.7%) of genes in pham
- Manual Annotations of this start: 3 of 20
- Called 60.0% of time when present
- Phage (with cluster) where this start called: Hexbug_72 (CT), Nodigi_72 (CT), Orla_73 (CT),

Summary by clusters:

There is one cluster represented in this pham: CT

Info for manual annotations of cluster CT:

- Start number 14 was manually annotated 2 times for cluster CT.
- Start number 15 was manually annotated 4 times for cluster CT.
- Start number 16 was manually annotated 11 times for cluster CT.
- Start number 18 was manually annotated 3 times for cluster CT.

Gene Information:

Gene: Balloona_69 Start: 46779, Stop: 47021, Start Num: 16

Candidate Starts for Balloona_69:

(6, 46737), (Start: 16 @46779 has 11 MA's), (20, 46815), (21, 46827), (23, 46890), (25, 46932), (26, 46953), (28, 46983), (29, 46995),

Gene: Bavidard_70 Start: 45864, Stop: 46157, Start Num: 16

Candidate Starts for Bavidard_70:

(5, 45756), (9, 45807), (Start: 16 @45864 has 11 MA's), (19, 45948), (20, 45951), (21, 45963), (23, 46026), (25, 46068), (26, 46089), (28, 46119), (29, 46131),

Gene: BigChungus_68 Start: 46032, Stop: 46274, Start Num: 16

Candidate Starts for BigChungus_68:

(5, 45924), (Start: 16 @46032 has 11 MA's), (20, 46068), (21, 46080), (23, 46143), (25, 46185), (26, 46206), (28, 46236), (29, 46248),

Gene: Button_68 Start: 45066, Stop: 45266, Start Num: 15

Candidate Starts for Button_68:

(11, 45045), (Start: 15 @45066 has 4 MA's), (21, 45117), (22, 45171), (23, 45180),

Gene: CherryonLim_71 Start: 47828, Stop: 48055, Start Num: 16

Candidate Starts for CherryonLim_71:

(5, 47720), (Start: 16 @47828 has 11 MA's), (19, 47861), (20, 47864), (21, 47876), (23, 47939), (25, 47981), (26, 48002), (28, 48032),

Gene: CocoaPuff_68 Start: 46037, Stop: 46279, Start Num: 16

Candidate Starts for CocoaPuff_68:

(5, 45929), (Start: 16 @46037 has 11 MA's), (20, 46073), (21, 46085), (23, 46148), (25, 46190), (26, 46211), (28, 46241), (29, 46253),

Gene: Elinal_74 Start: 47155, Stop: 47385, Start Num: 16

Candidate Starts for Elinal_74:

(5, 47047), (9, 47098), (Start: 16 @47155 has 11 MA's), (20, 47194), (21, 47206), (23, 47269), (25, 47311), (26, 47332), (27, 47341),

Gene: Feastonyeet_68 Start: 46032, Stop: 46274, Start Num: 16

Candidate Starts for Feastonyeet_68:

(5, 45924), (Start: 16 @46032 has 11 MA's), (20, 46068), (21, 46080), (23, 46143), (25, 46185), (26, 46206), (28, 46236), (29, 46248),

Gene: GiKK_72 Start: 46277, Stop: 46456, Start Num: 15

Candidate Starts for GiKK_72:

(11, 46256), (Start: 15 @46277 has 4 MA's), (21, 46328), (22, 46382), (23, 46391),

Gene: Hexbug_72 Start: 46284, Stop: 46460, Start Num: 18

Candidate Starts for Hexbug_72:

(2, 46077), (3, 46125), (4, 46134), (6, 46155), (12, 46227), (Start: 18 @46284 has 3 MA's), (23, 46374), (24, 46401), (25, 46416),

Gene: Jamzy_72 Start: 46007, Stop: 46186, Start Num: 15

Candidate Starts for Jamzy_72:

(7, 45944), (10, 45965), (13, 45992), (Start: 15 @46007 has 4 MA's), (21, 46058), (22, 46112), (23, 46121),

Gene: KayGee_72 Start: 47142, Stop: 47372, Start Num: 16

Candidate Starts for KayGee_72:

(5, 47034), (9, 47085), (Start: 16 @47142 has 11 MA's), (20, 47181), (21, 47193), (23, 47256), (25, 47298), (26, 47319), (27, 47328),

Gene: Lauer_64 Start: 46986, Stop: 47219, Start Num: 16

Candidate Starts for Lauer_64:

(5, 46878), (9, 46929), (Start: 16 @46986 has 11 MA's), (20, 47025), (21, 47037), (23, 47100), (25, 47142), (26, 47163), (28, 47193),

Gene: Margaret_73 Start: 45790, Stop: 46011, Start Num: 14

Candidate Starts for Margaret_73:

(Start: 14 @45790 has 2 MA's), (17, 45811), (Start: 18 @45835 has 3 MA's), (23, 45925), (24, 45952), (25, 45967),

Gene: Mayweather_73 Start: 47208, Stop: 47441, Start Num: 16

Candidate Starts for Mayweather_73:

(5, 47100), (Start: 16 @47208 has 11 MA's), (20, 47244), (21, 47256), (23, 47319), (25, 47361), (26, 47382), (28, 47412),

Gene: Nodigi_72 Start: 46305, Stop: 46481, Start Num: 18

Candidate Starts for Nodigi_72:

(1, 46047), (2, 46098), (3, 46146), (4, 46155), (6, 46176), (12, 46248), (Start: 18 @46305 has 3 MA's), (23, 46395), (24, 46422), (25, 46437),

Gene: Orla_73 Start: 46436, Stop: 46612, Start Num: 18

Candidate Starts for Orla_73:

(2, 46229), (3, 46277), (4, 46286), (6, 46307), (8, 46340), (12, 46379), (Start: 18 @46436 has 3 MA's), (23, 46526), (24, 46553), (25, 46568),

Gene: Pons_73 Start: 46862, Stop: 47089, Start Num: 16

Candidate Starts for Pons_73:

(Start: 16 @46862 has 11 MA's), (20, 46898), (21, 46910), (23, 46973), (25, 47015), (26, 47036), (28, 47066),

Gene: PotPie_69 Start: 47046, Stop: 47288, Start Num: 16

Candidate Starts for PotPie_69:

(5, 46938), (Start: 16 @47046 has 11 MA's), (20, 47082), (21, 47094), (23, 47157), (25, 47199), (26, 47220), (28, 47250), (29, 47262),

Gene: RanchParmCat_72 Start: 46082, Stop: 46303, Start Num: 14

Candidate Starts for RanchParmCat_72:

(Start: 14 @46082 has 2 MA's), (17, 46103), (Start: 18 @46127 has 3 MA's), (23, 46217), (24, 46244), (25, 46259),

Gene: SummitAcademy_69 Start: 46189, Stop: 46431, Start Num: 16

Candidate Starts for SummitAcademy_69:

(5, 46081), (Start: 16 @46189 has 11 MA's), (20, 46225), (21, 46237), (23, 46300), (25, 46342), (26, 46363), (28, 46393), (29, 46405),

Gene: Tarnish_68 Start: 46381, Stop: 46626, Start Num: 16

Candidate Starts for Tarnish_68:

(9, 46324), (Start: 16 @46381 has 11 MA's), (20, 46420), (21, 46432), (23, 46495), (25, 46537), (26, 46558), (28, 46588), (29, 46600),

Gene: Yakult_71 Start: 46173, Stop: 46373, Start Num: 15

Candidate Starts for Yakult_71:

(11, 46152), (Start: 15 @46173 has 4 MA's), (21, 46224), (22, 46278), (23, 46287),