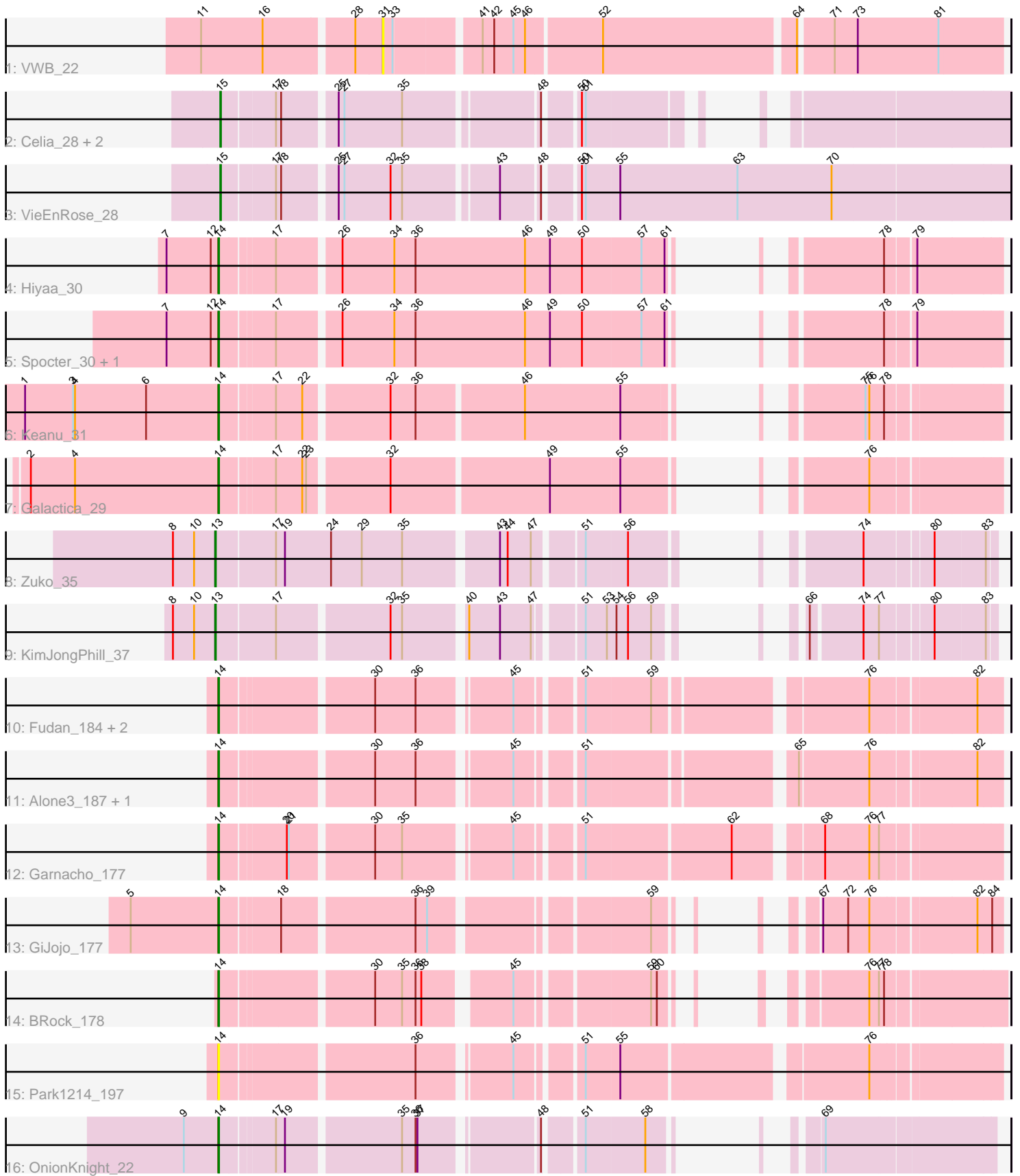


Pham 312007



Note: Tracks are now grouped by subcluster and scaled. Switching in subcluster is indicated by changes in track color. Track scale is now set by default to display the region 30 bp upstream of start 1 to 30 bp downstream of the last possible start. If this default region is judged to be packed too tightly with annotated starts, the track will be further scaled to only show that region of the ORF with annotated starts. This action will be indicated by adding "Zoomed" to the title. For starts, yellow indicates the location of called starts comprised solely of Glimmer/GeneMark auto-annotations, green indicates the location of called starts with at least 1 manual gene annotation.

Pham 312007 Report

This analysis was run 06/27/26 on database version 652.

Pham number 312007 has 22 members, 4 are drafts.

Phages represented in each track:

- Track 1 : VWB_22
- Track 2 : Celia_28, Urza_28, Itza_28
- Track 3 : VieEnRose_28
- Track 4 : Hiyaa_30
- Track 5 : Spocter_30, Kokushibo_32
- Track 6 : Keanu_31
- Track 7 : Galactica_29
- Track 8 : Zuko_35
- Track 9 : KimJongPhill_37
- Track 10 : Fudan_184, LuckySocke_185, Talos_187
- Track 11 : Alone3_187, Beleetus_185
- Track 12 : Garnacho_177
- Track 13 : GiJojo_177
- Track 14 : BRock_178
- Track 15 : Park1214_197
- Track 16 : OnionKnight_22

Summary of Final Annotations (See graph section above for start numbers):

The start number called the most often in the published annotations is 14, it was called in 12 of the 18 non-draft genes in the pham.

Genes that call this "Most Annotated" start:

- Alone3_187, BRock_178, Beleetus_185, Fudan_184, Galactica_29, Garnacho_177, GiJojo_177, Hiyaa_30, Keanu_31, Kokushibo_32, LuckySocke_185, OnionKnight_22, Park1214_197, Spocter_30, Talos_187,

Genes that have the "Most Annotated" start but do not call it:

-

Genes that do not have the "Most Annotated" start:

- Celia_28, Itza_28, KimJongPhill_37, Urza_28, VWB_22, VieEnRose_28, Zuko_35,

Summary by start number:

Start 13:

- Found in 2 of 22 (9.1%) of genes in pham
- Manual Annotations of this start: 2 of 18
- Called 100.0% of time when present
- Phage (with cluster) where this start called: KimJongPhill_37 (BR), Zuko_35 (BR),

Start 14:

- Found in 15 of 22 (68.2%) of genes in pham
- Manual Annotations of this start: 12 of 18
- Called 100.0% of time when present
- Phage (with cluster) where this start called: Alone3_187 (BS), BRock_178 (BS), Beleetus_185 (BS), Fudan_184 (BS), Galactica_29 (BQ), Garnacho_177 (BS), GiJojo_177 (BS), Hiyaa_30 (BQ), Keanu_31 (BQ), Kokushibo_32 (BQ), LuckySocke_185 (BS), OnionKnight_22 (singleton), Park1214_197 (BS), Spocter_30 (BQ), Talos_187 (BS),

Start 15:

- Found in 4 of 22 (18.2%) of genes in pham
- Manual Annotations of this start: 4 of 18
- Called 100.0% of time when present
- Phage (with cluster) where this start called: Celia_28 (BD6), Itza_28 (BD6), Urza_28 (BD6), VieEnRose_28 (BD6),

Start 31:

- Found in 1 of 22 (4.5%) of genes in pham
- No Manual Annotations of this start.
- Called 100.0% of time when present
- Phage (with cluster) where this start called: VWB_22 (BA),

Summary by clusters:

There are 6 clusters represented in this pham: singleton, BA, BD6, BQ, BR, BS,

Info for manual annotations of cluster BD6:

- Start number 15 was manually annotated 4 times for cluster BD6.

Info for manual annotations of cluster BQ:

- Start number 14 was manually annotated 4 times for cluster BQ.

Info for manual annotations of cluster BR:

- Start number 13 was manually annotated 2 times for cluster BR.

Info for manual annotations of cluster BS:

- Start number 14 was manually annotated 7 times for cluster BS.

Gene Information:

Gene: Alone3_187 Start: 95865, Stop: 96938, Start Num: 14

Candidate Starts for Alone3_187:

(Start: 14 @95865 has 12 MA's), (30, 96081), (36, 96144), (45, 96273), (51, 96357), (65, 96648), (76, 96753), (82, 96903),

Gene: BRock_178 Start: 91256, Stop: 92188, Start Num: 14

Candidate Starts for BRock_178:

(Start: 14 @91256 has 12 MA's), (30, 91472), (35, 91514), (36, 91535), (38, 91544), (45, 91661), (59, 91844), (60, 91853), (76, 91994), (77, 92009), (78, 92015),

Gene: Beleetus_185 Start: 94526, Stop: 95599, Start Num: 14

Candidate Starts for Beleetus_185:

(Start: 14 @94526 has 12 MA's), (30, 94742), (36, 94805), (45, 94934), (51, 95018), (65, 95309), (76, 95414), (82, 95564),

Gene: Celia_28 Start: 21987, Stop: 22973, Start Num: 15

Candidate Starts for Celia_28:

(Start: 15 @21987 has 4 MA's), (17, 22065), (18, 22071), (25, 22146), (27, 22155), (35, 22245), (48, 22437), (50, 22479), (51, 22485),

Gene: Fudan_184 Start: 94435, Stop: 95508, Start Num: 14

Candidate Starts for Fudan_184:

(Start: 14 @94435 has 12 MA's), (30, 94651), (36, 94714), (45, 94843), (51, 94927), (59, 95026), (76, 95323), (82, 95473),

Gene: Galactica_29 Start: 23278, Stop: 24240, Start Num: 14

Candidate Starts for Galactica_29:

(2, 22987), (4, 23056), (Start: 14 @23278 has 12 MA's), (17, 23356), (22, 23395), (23, 23401), (32, 23518), (49, 23755), (55, 23860), (76, 24055),

Gene: Garnacho_177 Start: 94205, Stop: 95284, Start Num: 14

Candidate Starts for Garnacho_177:

(Start: 14 @94205 has 12 MA's), (20, 94298), (21, 94301), (30, 94421), (35, 94463), (45, 94613), (51, 94697), (62, 94913), (68, 95030), (76, 95099), (77, 95114),

Gene: GiJojo_177 Start: 95573, Stop: 96496, Start Num: 14

Candidate Starts for GiJojo_177:

(5, 95438), (Start: 14 @95573 has 12 MA's), (18, 95657), (36, 95852), (39, 95870), (59, 96170), (67, 96242), (72, 96278), (76, 96311), (82, 96461), (84, 96482),

Gene: Hiyaa_30 Start: 24308, Stop: 25282, Start Num: 14

Candidate Starts for Hiyaa_30:

(7, 24230), (12, 24299), (Start: 14 @24308 has 12 MA's), (17, 24386), (26, 24473), (34, 24554), (36, 24587), (46, 24758), (49, 24797), (50, 24845), (57, 24935), (61, 24971), (78, 25118), (79, 25157),

Gene: Itza_28 Start: 21901, Stop: 22887, Start Num: 15

Candidate Starts for Itza_28:

(Start: 15 @21901 has 4 MA's), (17, 21979), (18, 21985), (25, 22060), (27, 22069), (35, 22159), (48, 22351), (50, 22393), (51, 22399),

Gene: Keanu_31 Start: 24375, Stop: 25334, Start Num: 14

Candidate Starts for Keanu_31:

(1, 24078), (3, 24153), (4, 24156), (6, 24267), (Start: 14 @24375 has 12 MA's), (17, 24453), (22, 24492), (32, 24615), (36, 24654), (46, 24813), (55, 24957), (75, 25143), (76, 25149), (78, 25170),

Gene: KimJongPhill_37 Start: 33176, Stop: 32256, Start Num: 13

Candidate Starts for KimJongPhill_37:

(8, 33242), (10, 33209), (Start: 13 @33176 has 2 MA's), (17, 33089), (32, 32927), (35, 32909), (40, 32822), (43, 32774), (47, 32726), (51, 32666), (53, 32633), (54, 32621), (56, 32603), (59, 32567), (66, 32516), (74, 32441), (77, 32417), (80, 32345), (83, 32270),

Gene: Kokushibo_32 Start: 24323, Stop: 25297, Start Num: 14

Candidate Starts for Kokushibo_32:

(7, 24245), (12, 24314), (Start: 14 @24323 has 12 MA's), (17, 24401), (26, 24488), (34, 24569), (36, 24602), (46, 24773), (49, 24812), (50, 24860), (57, 24950), (61, 24986), (78, 25133), (79, 25172),

Gene: LuckySocke_185 Start: 94376, Stop: 95449, Start Num: 14

Candidate Starts for LuckySocke_185:

(Start: 14 @94376 has 12 MA's), (30, 94592), (36, 94655), (45, 94784), (51, 94868), (59, 94967), (76, 95264), (82, 95414),

Gene: OnionKnight_22 Start: 17687, Stop: 18595, Start Num: 14

Candidate Starts for OnionKnight_22:

(9, 17633), (Start: 14 @17687 has 12 MA's), (17, 17765), (19, 17777), (35, 17945), (36, 17966), (37, 17969), (48, 18131), (51, 18179), (58, 18269), (69, 18344),

Gene: Park1214_197 Start: 96200, Stop: 97279, Start Num: 14

Candidate Starts for Park1214_197:

(Start: 14 @96200 has 12 MA's), (36, 96479), (45, 96608), (51, 96692), (55, 96743), (76, 97094),

Gene: Spocter_30 Start: 24296, Stop: 25270, Start Num: 14

Candidate Starts for Spocter_30:

(7, 24218), (12, 24287), (Start: 14 @24296 has 12 MA's), (17, 24374), (26, 24461), (34, 24542), (36, 24575), (46, 24746), (49, 24785), (50, 24833), (57, 24923), (61, 24959), (78, 25106), (79, 25145),

Gene: Talos_187 Start: 94395, Stop: 95468, Start Num: 14

Candidate Starts for Talos_187:

(Start: 14 @94395 has 12 MA's), (30, 94611), (36, 94674), (45, 94803), (51, 94887), (59, 94986), (76, 95283), (82, 95433),

Gene: Urza_28 Start: 21922, Stop: 22908, Start Num: 15

Candidate Starts for Urza_28:

(Start: 15 @21922 has 4 MA's), (17, 22000), (18, 22006), (25, 22081), (27, 22090), (35, 22180), (48, 22372), (50, 22414), (51, 22420),

Gene: VWB_22 Start: 19422, Stop: 20330, Start Num: 31

Candidate Starts for VWB_22:

(11, 19155), (16, 19251), (28, 19380), (31, 19422), (33, 19437), (41, 19557), (42, 19575), (45, 19605), (46, 19623), (52, 19734), (64, 20022), (71, 20070), (73, 20106), (81, 20232),

Gene: VieEnRose_28 Start: 21828, Stop: 22976, Start Num: 15

Candidate Starts for VieEnRose_28:

(Start: 15 @21828 has 4 MA's), (17, 21906), (18, 21912), (25, 21987), (27, 21996), (32, 22068), (35, 22086), (43, 22221), (48, 22278), (50, 22320), (51, 22326), (55, 22377), (63, 22560), (70, 22707),

Gene: Zuko_35 Start: 31679, Stop: 30726, Start Num: 13

Candidate Starts for Zuko_35:

(8, 31745), (10, 31712), (Start: 13 @31679 has 2 MA's), (17, 31592), (19, 31580), (24, 31508), (29, 31460), (35, 31397), (43, 31262), (44, 31250), (47, 31214), (51, 31151), (56, 31088), (74, 30911), (80, 30815), (83, 30740),