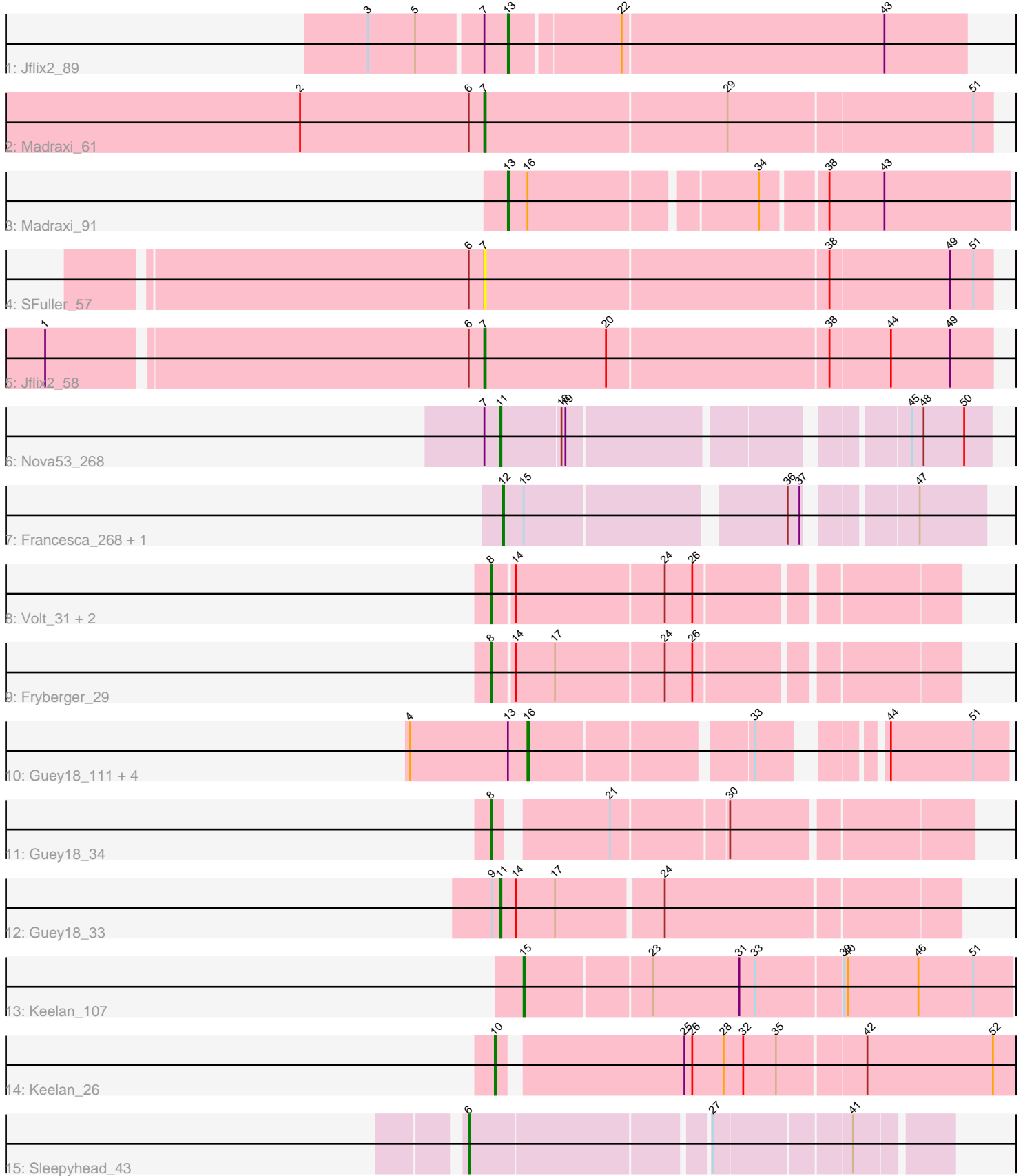


Pham 312012



Note: Tracks are now grouped by subcluster and scaled. Switching in subcluster is indicated by changes in track color. Track scale is now set by default to display the region 30 bp upstream of start 1 to 30 bp downstream of the last possible start. If this default region is judged to be packed too tightly with annotated starts, the track will be further scaled to only show that region of the ORF with annotated starts. This action will be indicated by adding "Zoomed" to the title. For starts, yellow indicates the location of called starts comprised solely of Glimmer/GeneMark auto-annotations, green indicates the location of called starts with at least 1 manual gene annotation.

Pham 312012 Report

This analysis was run 06/27/26 on database version 652.

Pham number 312012 has 22 members, 1 are drafts.

Phages represented in each track:

- Track 1 : Jflix2_89
- Track 2 : Madraxi_61
- Track 3 : Madraxi_91
- Track 4 : SFuller_57
- Track 5 : Jflix2_58
- Track 6 : Nova53_268
- Track 7 : Francesca_268, Dorin_268
- Track 8 : Volt_31, Ronaldo_32, Ziko_32
- Track 9 : Fryberger_29
- Track 10 : Guey18_111, Volt_110, Ziko_109, Fryberger_106, Ronaldo_108
- Track 11 : Guey18_34
- Track 12 : Guey18_33
- Track 13 : Keelan_107
- Track 14 : Keelan_26
- Track 15 : Sleepyhead_43

Summary of Final Annotations (See graph section above for start numbers):

The start number called the most often in the published annotations is 16, it was called in 5 of the 21 non-draft genes in the pham.

Genes that call this "Most Annotated" start:

- Fryberger_106, Guey18_111, Ronaldo_108, Volt_110, Ziko_109,

Genes that have the "Most Annotated" start but do not call it:

- Madraxi_91,

Genes that do not have the "Most Annotated" start:

- Dorin_268, Francesca_268, Fryberger_29, Guey18_33, Guey18_34, Jflix2_58, Jflix2_89, Keelan_107, Keelan_26, Madraxi_61, Nova53_268, Ronaldo_32, SFuller_57, Sleepyhead_43, Volt_31, Ziko_32,

Summary by start number:

Start 6:

- Found in 4 of 22 (18.2%) of genes in pham
- Manual Annotations of this start: 1 of 21
- Called 25.0% of time when present
- Phage (with cluster) where this start called: Sleepyhead_43 (singleton),

Start 7:

- Found in 5 of 22 (22.7%) of genes in pham
- Manual Annotations of this start: 2 of 21
- Called 60.0% of time when present
- Phage (with cluster) where this start called: Jflix2_58 (CF), Madraxi_61 (CF), SFuller_57 (CF),

Start 8:

- Found in 5 of 22 (22.7%) of genes in pham
- Manual Annotations of this start: 5 of 21
- Called 100.0% of time when present
- Phage (with cluster) where this start called: Fryberger_29 (DP), Guey18_34 (DP), Ronaldo_32 (DP), Volt_31 (DP), Ziko_32 (DP),

Start 10:

- Found in 1 of 22 (4.5%) of genes in pham
- Manual Annotations of this start: 1 of 21
- Called 100.0% of time when present
- Phage (with cluster) where this start called: Keelan_26 (DP),

Start 11:

- Found in 2 of 22 (9.1%) of genes in pham
- Manual Annotations of this start: 2 of 21
- Called 100.0% of time when present
- Phage (with cluster) where this start called: Guey18_33 (DP), Nova53_268 (CG),

Start 12:

- Found in 2 of 22 (9.1%) of genes in pham
- Manual Annotations of this start: 2 of 21
- Called 100.0% of time when present
- Phage (with cluster) where this start called: Dorin_268 (CG), Francesca_268 (CG),

Start 13:

- Found in 7 of 22 (31.8%) of genes in pham
- Manual Annotations of this start: 2 of 21
- Called 28.6% of time when present
- Phage (with cluster) where this start called: Jflix2_89 (CF), Madraxi_91 (CF),

Start 15:

- Found in 3 of 22 (13.6%) of genes in pham
- Manual Annotations of this start: 1 of 21
- Called 33.3% of time when present
- Phage (with cluster) where this start called: Keelan_107 (DP),

Start 16:

- Found in 6 of 22 (27.3%) of genes in pham
- Manual Annotations of this start: 5 of 21

- Called 83.3% of time when present
- Phage (with cluster) where this start called: Fryberger_106 (DP), Guey18_111 (DP), Ronaldo_108 (DP), Volt_110 (DP), Ziko_109 (DP),

Summary by clusters:

There are 4 clusters represented in this pham: singleton, CG, CF, DP,

Info for manual annotations of cluster CF:

- Start number 7 was manually annotated 2 times for cluster CF.
- Start number 13 was manually annotated 2 times for cluster CF.

Info for manual annotations of cluster CG:

- Start number 11 was manually annotated 1 time for cluster CG.
- Start number 12 was manually annotated 2 times for cluster CG.

Info for manual annotations of cluster DP:

- Start number 8 was manually annotated 5 times for cluster DP.
- Start number 10 was manually annotated 1 time for cluster DP.
- Start number 11 was manually annotated 1 time for cluster DP.
- Start number 15 was manually annotated 1 time for cluster DP.
- Start number 16 was manually annotated 5 times for cluster DP.

Gene Information:

Gene: Dorin_268 Start: 130231, Stop: 130557, Start Num: 12

Candidate Starts for Dorin_268:

(Start: 12 @130231 has 2 MA's), (Start: 15 @130246 has 1 MA's), (36, 130429), (37, 130438), (47, 130507),

Gene: Francesca_268 Start: 130873, Stop: 131199, Start Num: 12

Candidate Starts for Francesca_268:

(Start: 12 @130873 has 2 MA's), (Start: 15 @130888 has 1 MA's), (36, 131071), (37, 131080), (47, 131149),

Gene: Fryberger_29 Start: 8784, Stop: 8455, Start Num: 8

Candidate Starts for Fryberger_29:

(Start: 8 @8784 has 5 MA's), (14, 8769), (17, 8739), (24, 8658), (26, 8637),

Gene: Fryberger_106 Start: 52384, Stop: 52698, Start Num: 16

Candidate Starts for Fryberger_106:

(4, 52294), (Start: 13 @52369 has 2 MA's), (Start: 16 @52384 has 5 MA's), (33, 52540), (44, 52609), (51, 52672),

Gene: Guey18_111 Start: 53707, Stop: 54021, Start Num: 16

Candidate Starts for Guey18_111:

(4, 53617), (Start: 13 @53692 has 2 MA's), (Start: 16 @53707 has 5 MA's), (33, 53863), (44, 53932), (51, 53995),

Gene: Guey18_34 Start: 9973, Stop: 9644, Start Num: 8

Candidate Starts for Guey18_34:

(Start: 8 @9973 has 5 MA's), (21, 9898), (30, 9814),

Gene: Guey18_33 Start: 9651, Stop: 9316, Start Num: 11

Candidate Starts for Guey18_33:

(9, 9657), (Start: 11 @9651 has 2 MA's), (14, 9639), (17, 9609), (24, 9531),

Gene: Jflix2_89 Start: 50660, Stop: 51001, Start Num: 13

Candidate Starts for Jflix2_89:

(3, 50558), (5, 50594), (Start: 7 @50642 has 2 MA's), (Start: 13 @50660 has 2 MA's), (22, 50741), (43, 50939),

Gene: Jflix2_58 Start: 39721, Stop: 40101, Start Num: 7

Candidate Starts for Jflix2_58:

(1, 39397), (Start: 6 @39709 has 1 MA's), (Start: 7 @39721 has 2 MA's), (20, 39814), (38, 39979), (44, 40024), (49, 40069),

Gene: Keelan_107 Start: 53290, Stop: 53652, Start Num: 15

Candidate Starts for Keelan_107:

(Start: 15 @53290 has 1 MA's), (23, 53383), (31, 53449), (33, 53461), (39, 53524), (40, 53527), (46, 53581), (51, 53623),

Gene: Keelan_26 Start: 8252, Stop: 7875, Start Num: 10

Candidate Starts for Keelan_26:

(Start: 10 @8252 has 1 MA's), (25, 8120), (26, 8114), (28, 8090), (32, 8075), (35, 8051), (42, 7988), (52, 7892),

Gene: Madraxi_61 Start: 42224, Stop: 42604, Start Num: 7

Candidate Starts for Madraxi_61:

(2, 42083), (Start: 6 @42212 has 1 MA's), (Start: 7 @42224 has 2 MA's), (29, 42407), (51, 42590),

Gene: Madraxi_91 Start: 52811, Stop: 53170, Start Num: 13

Candidate Starts for Madraxi_91:

(Start: 13 @52811 has 2 MA's), (Start: 16 @52826 has 5 MA's), (34, 52988), (38, 53033), (43, 53075),

Gene: Nova53_268 Start: 131044, Stop: 131379, Start Num: 11

Candidate Starts for Nova53_268:

(Start: 7 @131032 has 2 MA's), (Start: 11 @131044 has 2 MA's), (18, 131089), (19, 131092), (45, 131320), (48, 131329), (50, 131359),

Gene: Ronaldo_32 Start: 9713, Stop: 9384, Start Num: 8

Candidate Starts for Ronaldo_32:

(Start: 8 @9713 has 5 MA's), (14, 9698), (24, 9587), (26, 9566),

Gene: Ronaldo_108 Start: 53289, Stop: 53603, Start Num: 16

Candidate Starts for Ronaldo_108:

(4, 53199), (Start: 13 @53274 has 2 MA's), (Start: 16 @53289 has 5 MA's), (33, 53445), (44, 53514), (51, 53577),

Gene: SFuller_57 Start: 39913, Stop: 40293, Start Num: 7

Candidate Starts for SFuller_57:

(Start: 6 @39901 has 1 MA's), (Start: 7 @39913 has 2 MA's), (38, 40171), (49, 40261), (51, 40279),

Gene: Sleepyhead_43 Start: 31028, Stop: 31363, Start Num: 6

Candidate Starts for Sleepyhead_43:
(Start: 6 @31028 has 1 MA's), (27, 31199), (41, 31295),

Gene: Volt_31 Start: 9713, Stop: 9384, Start Num: 8
Candidate Starts for Volt_31:
(Start: 8 @9713 has 5 MA's), (14, 9698), (24, 9587), (26, 9566),

Gene: Volt_110 Start: 53453, Stop: 53767, Start Num: 16
Candidate Starts for Volt_110:
(4, 53363), (Start: 13 @53438 has 2 MA's), (Start: 16 @53453 has 5 MA's), (33, 53609), (44, 53678),
(51, 53741),

Gene: Ziko_109 Start: 53295, Stop: 53609, Start Num: 16
Candidate Starts for Ziko_109:
(4, 53205), (Start: 13 @53280 has 2 MA's), (Start: 16 @53295 has 5 MA's), (33, 53451), (44, 53520),
(51, 53583),

Gene: Ziko_32 Start: 9653, Stop: 9324, Start Num: 8
Candidate Starts for Ziko_32:
(Start: 8 @9653 has 5 MA's), (14, 9638), (24, 9527), (26, 9506),