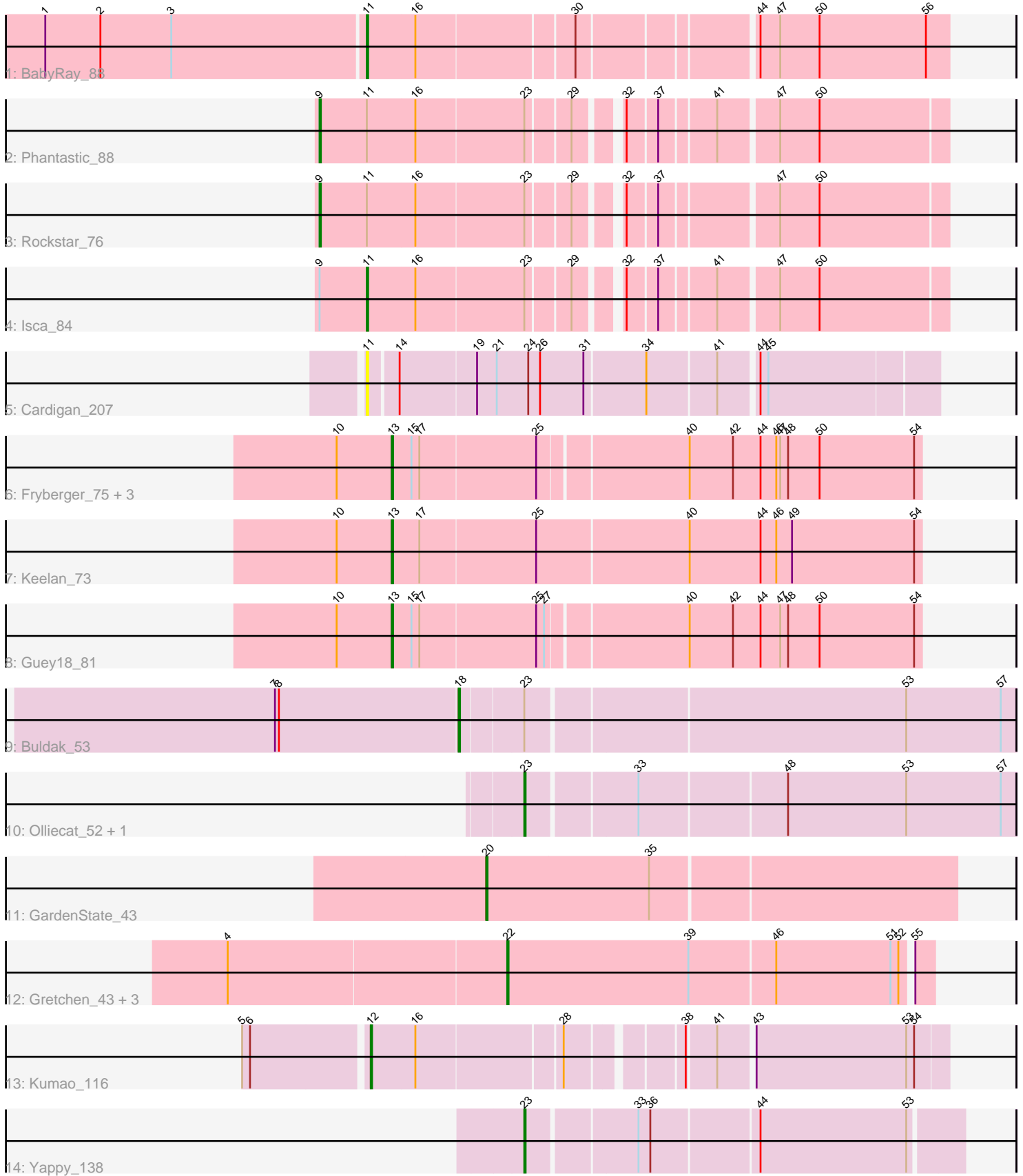


Pham 312029



Note: Tracks are now grouped by subcluster and scaled. Switching in subcluster is indicated by changes in track color. Track scale is now set by default to display the region 30 bp upstream of start 1 to 30 bp downstream of the last possible start. If this default region is judged to be packed too tightly with annotated starts, the track will be further scaled to only show that region of the ORF with annotated starts. This action will be indicated by adding "Zoomed" to the title. For starts, yellow indicates the location of called starts comprised solely of Glimmer/GeneMark auto-annotations, green indicates the location of called starts with at least 1 manual gene annotation.

Pham 312029 Report

This analysis was run 06/27/26 on database version 652.

Pham number 312029 has 21 members, 1 are drafts.

Phages represented in each track:

- Track 1 : BabyRay_88
- Track 2 : Phantastic_88
- Track 3 : Rockstar_76
- Track 4 : Isca_84
- Track 5 : Cardigan_207
- Track 6 : Fryberger_75, Ziko_79, Ronaldo_79, Volt_79
- Track 7 : Keelan_73
- Track 8 : Guey18_81
- Track 9 : Buldak_53
- Track 10 : Olliecat_52, Squircle_52
- Track 11 : GardenState_43
- Track 12 : Gretchen_43, SuperHands_42, Percival_44, Forester_42
- Track 13 : Kumao_116
- Track 14 : Yappy_138

Summary of Final Annotations (See graph section above for start numbers):

The start number called the most often in the published annotations is 13, it was called in 6 of the 20 non-draft genes in the pham.

Genes that call this "Most Annotated" start:

- Fryberger_75, Guey18_81, Keelan_73, Ronaldo_79, Volt_79, Ziko_79,

Genes that have the "Most Annotated" start but do not call it:

-

Genes that do not have the "Most Annotated" start:

- BabyRay_88, Buldak_53, Cardigan_207, Forester_42, GardenState_43, Gretchen_43, Isca_84, Kumao_116, Olliecat_52, Percival_44, Phantastic_88, Rockstar_76, Squircle_52, SuperHands_42, Yappy_138,

Summary by start number:

Start 9:

- Found in 3 of 21 (14.3%) of genes in pham
- Manual Annotations of this start: 2 of 20
- Called 66.7% of time when present
- Phage (with cluster) where this start called: Phantastic_88 (A3), Rockstar_76 (A3),

Start 11:

- Found in 5 of 21 (23.8%) of genes in pham
- Manual Annotations of this start: 2 of 20
- Called 60.0% of time when present
- Phage (with cluster) where this start called: BabyRay_88 (A3), Cardigan_207 (DD), Isca_84 (A3),

Start 12:

- Found in 1 of 21 (4.8%) of genes in pham
- Manual Annotations of this start: 1 of 20
- Called 100.0% of time when present
- Phage (with cluster) where this start called: Kumao_116 (singleton),

Start 13:

- Found in 6 of 21 (28.6%) of genes in pham
- Manual Annotations of this start: 6 of 20
- Called 100.0% of time when present
- Phage (with cluster) where this start called: Fryberger_75 (DP), Guey18_81 (DP), Keelan_73 (DP), Ronaldo_79 (DP), Volt_79 (DP), Ziko_79 (DP),

Start 18:

- Found in 1 of 21 (4.8%) of genes in pham
- Manual Annotations of this start: 1 of 20
- Called 100.0% of time when present
- Phage (with cluster) where this start called: Buldak_53 (EB),

Start 20:

- Found in 1 of 21 (4.8%) of genes in pham
- Manual Annotations of this start: 1 of 20
- Called 100.0% of time when present
- Phage (with cluster) where this start called: GardenState_43 (EH),

Start 22:

- Found in 4 of 21 (19.0%) of genes in pham
- Manual Annotations of this start: 4 of 20
- Called 100.0% of time when present
- Phage (with cluster) where this start called: Forester_42 (EH), Gretchen_43 (EH), Percival_44 (EH), SuperHands_42 (EH),

Start 23:

- Found in 7 of 21 (33.3%) of genes in pham
- Manual Annotations of this start: 3 of 20
- Called 42.9% of time when present
- Phage (with cluster) where this start called: Olliecat_52 (EB), Squirrel_52 (EB), Yappy_138 (singleton),

Summary by clusters:

There are 6 clusters represented in this pham: singleton, EH, DD, EB, A3, DP,

Info for manual annotations of cluster A3:

- Start number 9 was manually annotated 2 times for cluster A3.
- Start number 11 was manually annotated 2 times for cluster A3.

Info for manual annotations of cluster DP:

- Start number 13 was manually annotated 6 times for cluster DP.

Info for manual annotations of cluster EB:

- Start number 18 was manually annotated 1 time for cluster EB.
- Start number 23 was manually annotated 2 times for cluster EB.

Info for manual annotations of cluster EH:

- Start number 20 was manually annotated 1 time for cluster EH.
- Start number 22 was manually annotated 4 times for cluster EH.

Gene Information:

Gene: BabyRay_88 Start: 48407, Stop: 47991, Start Num: 11

Candidate Starts for BabyRay_88:

(1, 48647), (2, 48605), (3, 48551), (Start: 11 @48407 has 2 MA's), (16, 48371), (30, 48257), (44, 48134), (47, 48119), (50, 48089), (56, 48008),

Gene: Buldak_53 Start: 35379, Stop: 35786, Start Num: 18

Candidate Starts for Buldak_53:

(7, 35241), (8, 35244), (Start: 18 @35379 has 1 MA's), (Start: 23 @35424 has 3 MA's), (53, 35703), (57, 35775),

Gene: Cardigan_207 Start: 98477, Stop: 98064, Start Num: 11

Candidate Starts for Cardigan_207:

(Start: 11 @98477 has 2 MA's), (14, 98456), (19, 98399), (21, 98384), (24, 98360), (26, 98351), (31, 98318), (34, 98273), (41, 98222), (44, 98195), (45, 98189),

Gene: Forester_42 Start: 29001, Stop: 29315, Start Num: 22

Candidate Starts for Forester_42:

(4, 28794), (Start: 22 @29001 has 4 MA's), (39, 29139), (46, 29202), (51, 29289), (52, 29295), (55, 29301),

Gene: Fryberger_75 Start: 40522, Stop: 40130, Start Num: 13

Candidate Starts for Fryberger_75:

(10, 40564), (Start: 13 @40522 has 6 MA's), (15, 40507), (17, 40501), (25, 40414), (40, 40306), (42, 40273), (44, 40252), (46, 40240), (47, 40237), (48, 40231), (50, 40207), (54, 40135),

Gene: GardenState_43 Start: 27338, Stop: 27688, Start Num: 20

Candidate Starts for GardenState_43:

(Start: 20 @27338 has 1 MA's), (35, 27461),

Gene: Gretchen_43 Start: 28685, Stop: 28999, Start Num: 22

Candidate Starts for Gretchen_43:

(4, 28478), (Start: 22 @28685 has 4 MA's), (39, 28823), (46, 28886), (51, 28973), (52, 28979), (55, 28985),

Gene: Guey18_81 Start: 41893, Stop: 41501, Start Num: 13

Candidate Starts for Guey18_81:

(10, 41935), (Start: 13 @41893 has 6 MA's), (15, 41878), (17, 41872), (25, 41785), (27, 41779), (40, 41677), (42, 41644), (44, 41623), (47, 41608), (48, 41602), (50, 41578), (54, 41506),

Gene: Isca_84 Start: 47705, Stop: 47304, Start Num: 11

Candidate Starts for Isca_84:

(Start: 9 @47741 has 2 MA's), (Start: 11 @47705 has 2 MA's), (16, 47669), (Start: 23 @47588 has 3 MA's), (29, 47558), (32, 47531), (37, 47510), (41, 47471), (47, 47429), (50, 47399),

Gene: Keelan_73 Start: 40361, Stop: 39963, Start Num: 13

Candidate Starts for Keelan_73:

(10, 40403), (Start: 13 @40361 has 6 MA's), (17, 40340), (25, 40253), (40, 40139), (44, 40085), (46, 40073), (49, 40061), (54, 39968),

Gene: Kumao_116 Start: 68785, Stop: 68384, Start Num: 12

Candidate Starts for Kumao_116:

(5, 68875), (6, 68869), (Start: 12 @68785 has 1 MA's), (16, 68752), (28, 68647), (38, 68572), (41, 68551), (43, 68527), (53, 68413), (54, 68407),

Gene: Olliecat_52 Start: 35375, Stop: 35734, Start Num: 23

Candidate Starts for Olliecat_52:

(Start: 23 @35375 has 3 MA's), (33, 35453), (48, 35561), (53, 35651), (57, 35723),

Gene: Percival_44 Start: 28520, Stop: 28834, Start Num: 22

Candidate Starts for Percival_44:

(4, 28313), (Start: 22 @28520 has 4 MA's), (39, 28658), (46, 28721), (51, 28808), (52, 28814), (55, 28820),

Gene: Phantastic_88 Start: 47859, Stop: 47422, Start Num: 9

Candidate Starts for Phantastic_88:

(Start: 9 @47859 has 2 MA's), (Start: 11 @47823 has 2 MA's), (16, 47787), (Start: 23 @47706 has 3 MA's), (29, 47676), (32, 47649), (37, 47628), (41, 47589), (47, 47547), (50, 47517),

Gene: Rockstar_76 Start: 45549, Stop: 45112, Start Num: 9

Candidate Starts for Rockstar_76:

(Start: 9 @45549 has 2 MA's), (Start: 11 @45513 has 2 MA's), (16, 45477), (Start: 23 @45396 has 3 MA's), (29, 45366), (32, 45339), (37, 45318), (47, 45237), (50, 45207),

Gene: Ronaldo_79 Start: 41666, Stop: 41274, Start Num: 13

Candidate Starts for Ronaldo_79:

(10, 41708), (Start: 13 @41666 has 6 MA's), (15, 41651), (17, 41645), (25, 41558), (40, 41450), (42, 41417), (44, 41396), (46, 41384), (47, 41381), (48, 41375), (50, 41351), (54, 41279),

Gene: Squirle_52 Start: 35374, Stop: 35733, Start Num: 23

Candidate Starts for Squirle_52:

(Start: 23 @35374 has 3 MA's), (33, 35452), (48, 35560), (53, 35650), (57, 35722),

Gene: SuperHands_42 Start: 29020, Stop: 29334, Start Num: 22

Candidate Starts for SuperHands_42:

(4, 28813), (Start: 22 @29020 has 4 MA's), (39, 29158), (46, 29221), (51, 29308), (52, 29314), (55, 29320),

Gene: Volt_79 Start: 41830, Stop: 41438, Start Num: 13

Candidate Starts for Volt_79:

(10, 41872), (Start: 13 @41830 has 6 MA's), (15, 41815), (17, 41809), (25, 41722), (40, 41614), (42, 41581), (44, 41560), (46, 41548), (47, 41545), (48, 41539), (50, 41515), (54, 41443),

Gene: Yappy_138 Start: 65600, Stop: 65286, Start Num: 23

Candidate Starts for Yappy_138:

(Start: 23 @65600 has 3 MA's), (33, 65522), (36, 65513), (44, 65435), (53, 65324),

Gene: Ziko_79 Start: 41652, Stop: 41260, Start Num: 13

Candidate Starts for Ziko_79:

(10, 41694), (Start: 13 @41652 has 6 MA's), (15, 41637), (17, 41631), (25, 41544), (40, 41436), (42, 41403), (44, 41382), (46, 41370), (47, 41367), (48, 41361), (50, 41337), (54, 41265),