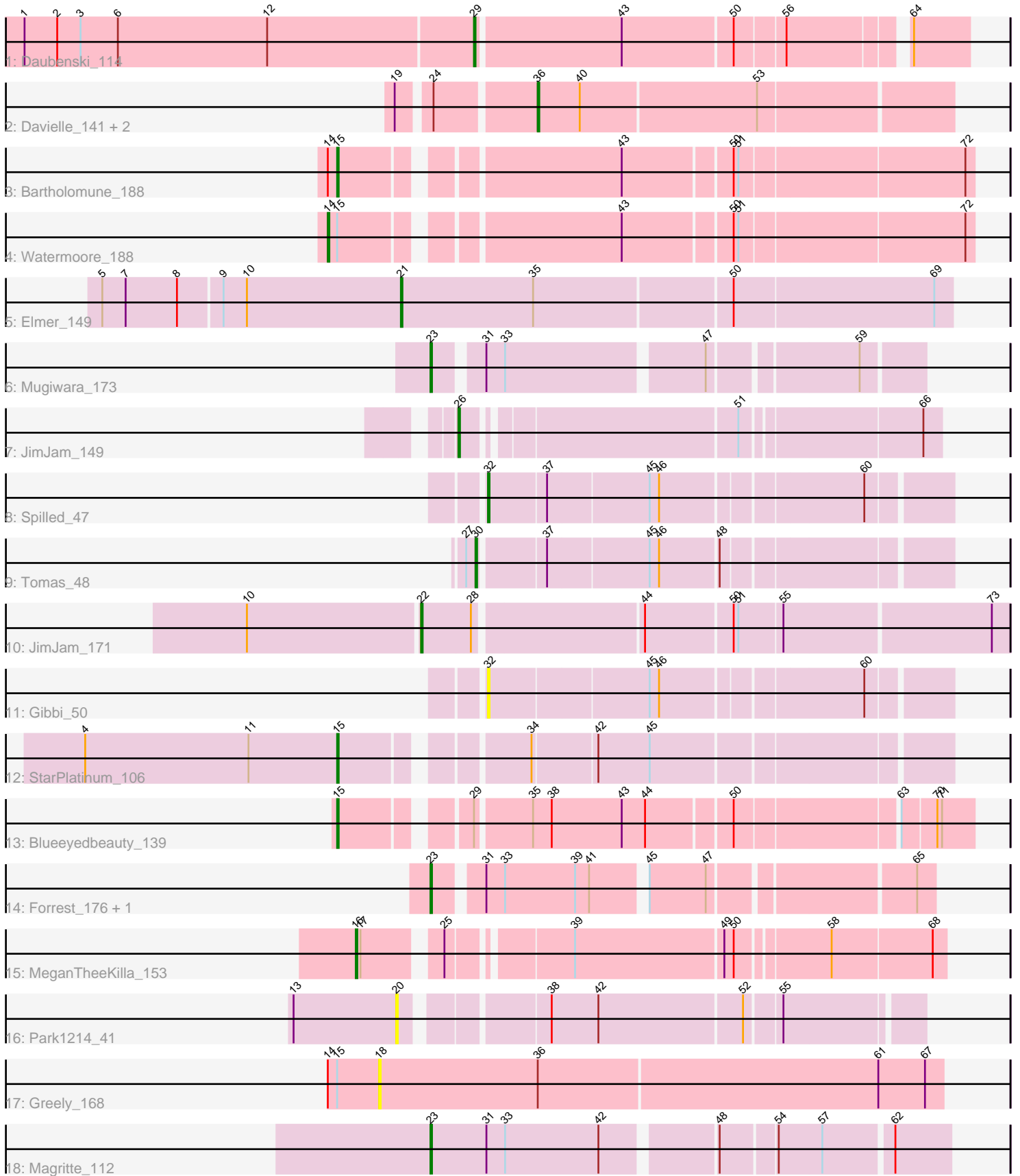


Pham 312031



Note: Tracks are now grouped by subcluster and scaled. Switching in subcluster is indicated by changes in track color. Track scale is now set by default to display the region 30 bp upstream of start 1 to 30 bp downstream of the last possible start. If this default region is judged to be packed too tightly with annotated starts, the track will be further scaled to only show that region of the ORF with annotated starts. This action will be indicated by adding "Zoomed" to the title. For starts, yellow indicates the location of called starts comprised solely of Glimmer/GeneMark auto-annotations, green indicates the location of called starts with at least 1 manual gene annotation.

Pham 312031 Report

This analysis was run 06/27/26 on database version 652.

Pham number 312031 has 21 members, 3 are drafts.

Phages represented in each track:

- Track 1 : Daubenski_114
- Track 2 : Davielle_141, Persimmon_141, WhereRU_140
- Track 3 : Bartholomune_188
- Track 4 : Watermoore_188
- Track 5 : Elmer_149
- Track 6 : Mugiwara_173
- Track 7 : JimJam_149
- Track 8 : Spilled_47
- Track 9 : Tomas_48
- Track 10 : JimJam_171
- Track 11 : Gibbi_50
- Track 12 : StarPlatinum_106
- Track 13 : Blueeyedbeauty_139
- Track 14 : Forrest_176, DeluluLabubu_178
- Track 15 : MeganTheeKilla_153
- Track 16 : Park1214_41
- Track 17 : Greely_168
- Track 18 : Magritte_112

Summary of Final Annotations (See graph section above for start numbers):

The start number called the most often in the published annotations is 23, it was called in 4 of the 18 non-draft genes in the pham.

Genes that call this "Most Annotated" start:

- DeluluLabubu_178, Forrest_176, Magritte_112, Mugiwara_173,

Genes that have the "Most Annotated" start but do not call it:

-

Genes that do not have the "Most Annotated" start:

- Bartholomune_188, Blueeyedbeauty_139, Daubenski_114, Davielle_141, Elmer_149, Gibbi_50, Greely_168, JimJam_149, JimJam_171, MeganTheeKilla_153, Park1214_41, Persimmon_141, Spilled_47, StarPlatinum_106, Tomas_48,

Watermoore_188, WhereRU_140,

Summary by start number:

Start 14:

- Found in 3 of 21 (14.3%) of genes in pham
- Manual Annotations of this start: 1 of 18
- Called 33.3% of time when present
- Phage (with cluster) where this start called: Watermoore_188 (BE1),

Start 15:

- Found in 5 of 21 (23.8%) of genes in pham
- Manual Annotations of this start: 3 of 18
- Called 60.0% of time when present
- Phage (with cluster) where this start called: Bartholomune_188 (BE1), Blueeyedbeauty_139 (BK1), StarPlatinum_106 (BE2),

Start 16:

- Found in 1 of 21 (4.8%) of genes in pham
- Manual Annotations of this start: 1 of 18
- Called 100.0% of time when present
- Phage (with cluster) where this start called: MeganTheeKilla_153 (BK1),

Start 18:

- Found in 1 of 21 (4.8%) of genes in pham
- No Manual Annotations of this start.
- Called 100.0% of time when present
- Phage (with cluster) where this start called: Greely_168 (C2),

Start 20:

- Found in 1 of 21 (4.8%) of genes in pham
- No Manual Annotations of this start.
- Called 100.0% of time when present
- Phage (with cluster) where this start called: Park1214_41 (BS),

Start 21:

- Found in 1 of 21 (4.8%) of genes in pham
- Manual Annotations of this start: 1 of 18
- Called 100.0% of time when present
- Phage (with cluster) where this start called: Elmer_149 (BE2),

Start 22:

- Found in 1 of 21 (4.8%) of genes in pham
- Manual Annotations of this start: 1 of 18
- Called 100.0% of time when present
- Phage (with cluster) where this start called: JimJam_171 (BE2),

Start 23:

- Found in 4 of 21 (19.0%) of genes in pham
- Manual Annotations of this start: 4 of 18
- Called 100.0% of time when present
- Phage (with cluster) where this start called: DeluluLabubu_178 (BK1), Forrest_176 (BK1), Magritte_112 (singleton), Mugiwara_173 (BE2),

Start 26:

- Found in 1 of 21 (4.8%) of genes in pham
- Manual Annotations of this start: 1 of 18
- Called 100.0% of time when present
- Phage (with cluster) where this start called: JimJam_149 (BE2),

Start 29:

- Found in 2 of 21 (9.5%) of genes in pham
- Manual Annotations of this start: 1 of 18
- Called 50.0% of time when present
- Phage (with cluster) where this start called: Daubenski_114 (BE1),

Start 30:

- Found in 1 of 21 (4.8%) of genes in pham
- Manual Annotations of this start: 1 of 18
- Called 100.0% of time when present
- Phage (with cluster) where this start called: Tomas_48 (BE2),

Start 32:

- Found in 2 of 21 (9.5%) of genes in pham
- Manual Annotations of this start: 1 of 18
- Called 100.0% of time when present
- Phage (with cluster) where this start called: Gibbi_50 (BE2), Spilled_47 (BE2),

Start 36:

- Found in 4 of 21 (19.0%) of genes in pham
- Manual Annotations of this start: 3 of 18
- Called 75.0% of time when present
- Phage (with cluster) where this start called: Davielle_141 (BE1), Persimmon_141 (BE1), WhereRU_140 (BE1),

Summary by clusters:

There are 6 clusters represented in this pham: singleton, BK1, BS, BE2, C2, BE1,

Info for manual annotations of cluster BE1:

- Start number 14 was manually annotated 1 time for cluster BE1.
- Start number 15 was manually annotated 1 time for cluster BE1.
- Start number 29 was manually annotated 1 time for cluster BE1.
- Start number 36 was manually annotated 3 times for cluster BE1.

Info for manual annotations of cluster BE2:

- Start number 15 was manually annotated 1 time for cluster BE2.
- Start number 21 was manually annotated 1 time for cluster BE2.
- Start number 22 was manually annotated 1 time for cluster BE2.
- Start number 23 was manually annotated 1 time for cluster BE2.
- Start number 26 was manually annotated 1 time for cluster BE2.
- Start number 30 was manually annotated 1 time for cluster BE2.
- Start number 32 was manually annotated 1 time for cluster BE2.

Info for manual annotations of cluster BK1:

- Start number 15 was manually annotated 1 time for cluster BK1.

- Start number 16 was manually annotated 1 time for cluster BK1.
- Start number 23 was manually annotated 2 times for cluster BK1.

Gene Information:

Gene: Bartholomune_188 Start: 98185, Stop: 98556, Start Num: 15

Candidate Starts for Bartholomune_188:

(Start: 14 @98179 has 1 MA's), (Start: 15 @98185 has 3 MA's), (43, 98344), (50, 98410), (51, 98413), (72, 98551),

Gene: Blueeyedbeauty_139 Start: 79396, Stop: 79761, Start Num: 15

Candidate Starts for Blueeyedbeauty_139:

(Start: 15 @79396 has 3 MA's), (Start: 29 @79465 has 1 MA's), (35, 79498), (38, 79510), (43, 79555), (44, 79570), (50, 79621), (63, 79717), (70, 79738), (71, 79741),

Gene: Daubenski_114 Start: 77002, Stop: 77292, Start Num: 29

Candidate Starts for Daubenski_114:

(1, 76717), (2, 76738), (3, 76753), (6, 76777), (12, 76873), (Start: 29 @77002 has 1 MA's), (43, 77092), (50, 77161), (56, 77191), (64, 77257),

Gene: Davielle_141 Start: 86167, Stop: 86424, Start Num: 36

Candidate Starts for Davielle_141:

(19, 86089), (24, 86107), (Start: 36 @86167 has 3 MA's), (40, 86194), (53, 86305),

Gene: DeluluLabubu_178 Start: 94536, Stop: 94826, Start Num: 23

Candidate Starts for DeluluLabubu_178:

(Start: 23 @94536 has 4 MA's), (31, 94563), (33, 94575), (39, 94620), (41, 94629), (45, 94659), (47, 94695), (65, 94815),

Gene: Elmer_149 Start: 88649, Stop: 88993, Start Num: 21

Candidate Starts for Elmer_149:

(5, 88460), (7, 88475), (8, 88508), (9, 88535), (10, 88550), (Start: 21 @88649 has 1 MA's), (35, 88733), (50, 88856), (69, 88982),

Gene: Forrest_176 Start: 93990, Stop: 94280, Start Num: 23

Candidate Starts for Forrest_176:

(Start: 23 @93990 has 4 MA's), (31, 94017), (33, 94029), (39, 94074), (41, 94083), (45, 94113), (47, 94149), (65, 94269),

Gene: Gibbi_50 Start: 22359, Stop: 22634, Start Num: 32

Candidate Starts for Gibbi_50:

(Start: 32 @22359 has 1 MA's), (45, 22458), (46, 22464), (60, 22584),

Gene: Greely_168 Start: 94393, Stop: 94752, Start Num: 18

Candidate Starts for Greely_168:

(Start: 14 @94360 has 1 MA's), (Start: 15 @94366 has 3 MA's), (18, 94393), (Start: 36 @94495 has 3 MA's), (61, 94711), (67, 94741),

Gene: JimJam_149 Start: 86635, Stop: 86916, Start Num: 26

Candidate Starts for JimJam_149:

(Start: 26 @86635 has 1 MA's), (51, 86797), (66, 86905),

Gene: JimJam_171 Start: 92515, Stop: 92871, Start Num: 22

Candidate Starts for JimJam_171:

(10, 92407), (Start: 22 @92515 has 1 MA's), (28, 92545), (44, 92647), (50, 92701), (51, 92704), (55, 92731), (73, 92860),

Gene: Magritte_112 Start: 72994, Stop: 73305, Start Num: 23

Candidate Starts for Magritte_112:

(Start: 23 @72994 has 4 MA's), (31, 73030), (33, 73042), (42, 73102), (48, 73168), (54, 73201), (57, 73228), (62, 73270),

Gene: MeganTheeKilla_153 Start: 84120, Stop: 84458, Start Num: 16

Candidate Starts for MeganTheeKilla_153:

(Start: 16 @84120 has 1 MA's), (17, 84123), (25, 84165), (39, 84234), (49, 84327), (50, 84333), (58, 84387), (68, 84450),

Gene: Mugiwara_173 Start: 93300, Stop: 93584, Start Num: 23

Candidate Starts for Mugiwara_173:

(Start: 23 @93300 has 4 MA's), (31, 93327), (33, 93339), (47, 93459), (59, 93546),

Gene: Park1214_41 Start: 12803, Stop: 13108, Start Num: 20

Candidate Starts for Park1214_41:

(13, 12737), (20, 12803), (38, 12884), (42, 12914), (52, 13004), (55, 13025),

Gene: Persimmon_141 Start: 85415, Stop: 85672, Start Num: 36

Candidate Starts for Persimmon_141:

(19, 85337), (24, 85355), (Start: 36 @85415 has 3 MA's), (40, 85442), (53, 85553),

Gene: Spilled_47 Start: 22319, Stop: 22594, Start Num: 32

Candidate Starts for Spilled_47:

(Start: 32 @22319 has 1 MA's), (37, 22355), (45, 22418), (46, 22424), (60, 22544),

Gene: StarPlatinum_106 Start: 73373, Stop: 73726, Start Num: 15

Candidate Starts for StarPlatinum_106:

(4, 73211), (11, 73316), (Start: 15 @73373 has 3 MA's), (34, 73475), (42, 73514), (45, 73547),

Gene: Tomas_48 Start: 24558, Stop: 24836, Start Num: 30

Candidate Starts for Tomas_48:

(27, 24552), (Start: 30 @24558 has 1 MA's), (37, 24597), (45, 24660), (46, 24666), (48, 24702),

Gene: Watermoore_188 Start: 100639, Stop: 101016, Start Num: 14

Candidate Starts for Watermoore_188:

(Start: 14 @100639 has 1 MA's), (Start: 15 @100645 has 3 MA's), (43, 100804), (50, 100870), (51, 100873), (72, 101011),

Gene: WhereRU_140 Start: 86167, Stop: 86424, Start Num: 36

Candidate Starts for WhereRU_140:

(19, 86089), (24, 86107), (Start: 36 @86167 has 3 MA's), (40, 86194), (53, 86305),