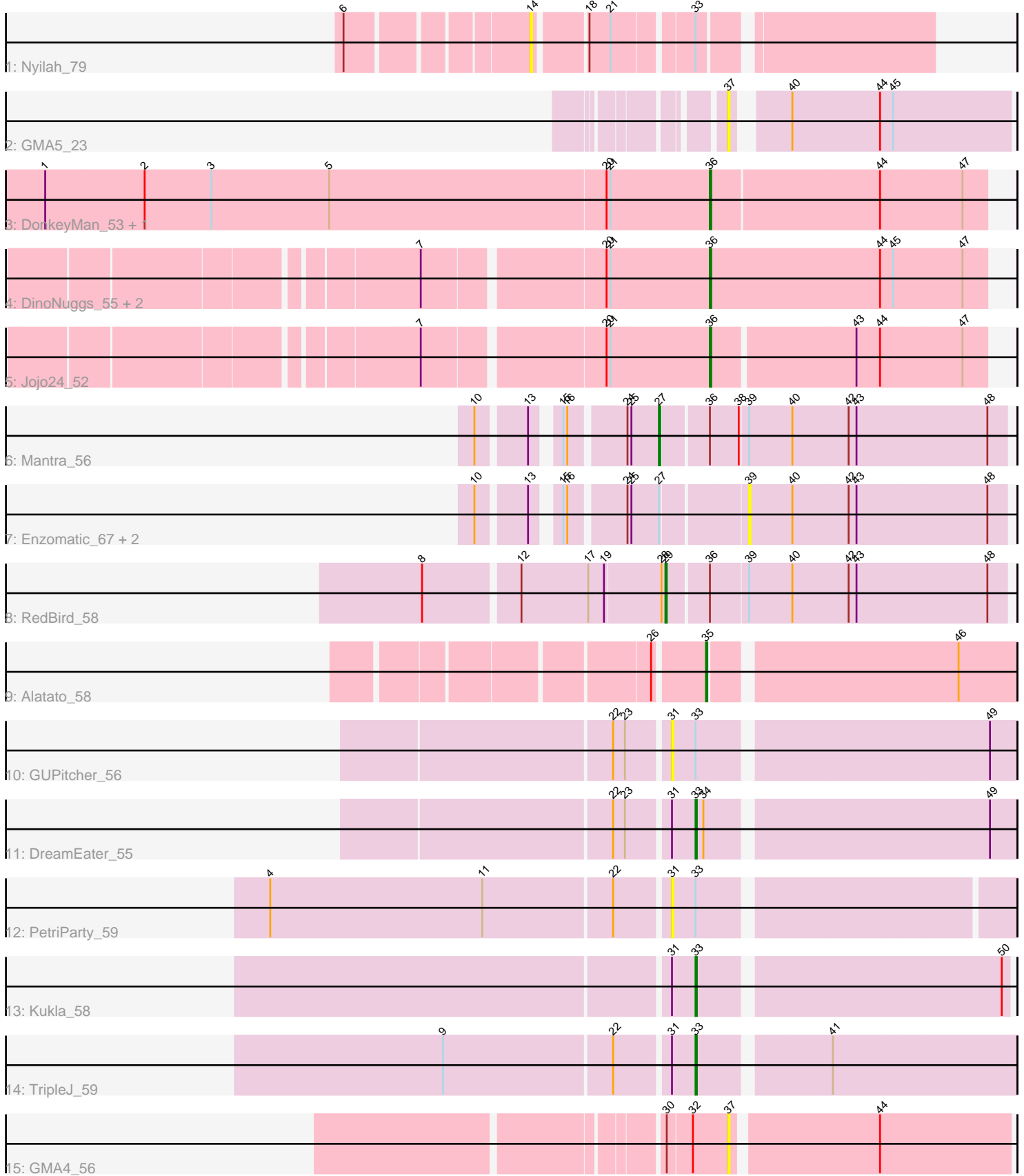


Pham 312040



Note: Tracks are now grouped by subcluster and scaled. Switching in subcluster is indicated by changes in track color. Track scale is now set by default to display the region 30 bp upstream of start 1 to 30 bp downstream of the last possible start. If this default region is judged to be packed too tightly with annotated starts, the track will be further scaled to only show that region of the ORF with annotated starts. This action will be indicated by adding "Zoomed" to the title. For starts, yellow indicates the location of called starts comprised solely of Glimmer/GeneMark auto-annotations, green indicates the location of called starts with at least 1 manual gene annotation.

Pham 312040 Report

This analysis was run 06/27/26 on database version 652.

Pham number 312040 has 20 members, 10 are drafts.

Phages represented in each track:

- Track 1 : Nyilah_79
- Track 2 : GMA5_23
- Track 3 : DonkeyMan_53, Tarzan_53
- Track 4 : DinoNuggs_55, Reyja_55, DearBasketball_57
- Track 5 : Jojo24_52
- Track 6 : Mantra_56
- Track 7 : Enzomatic_67, SeaLumen_65, Polo2Bam_66
- Track 8 : RedBird_58
- Track 9 : Alatato_58
- Track 10 : GUPitcher_56
- Track 11 : DreamEater_55
- Track 12 : PetriParty_59
- Track 13 : Kukla_58
- Track 14 : TripleJ_59
- Track 15 : GMA4_56

Summary of Final Annotations (See graph section above for start numbers):

The start number called the most often in the published annotations is 36, it was called in 4 of the 10 non-draft genes in the pham.

Genes that call this "Most Annotated" start:

- DearBasketball_57, DinoNuggs_55, DonkeyMan_53, Jojo24_52, Reyja_55, Tarzan_53,

Genes that have the "Most Annotated" start but do not call it:

- Mantra_56, RedBird_58,

Genes that do not have the "Most Annotated" start:

- Alatato_58, DreamEater_55, Enzomatic_67, GMA4_56, GMA5_23, GUPitcher_56, Kukla_58, Nyilah_79, PetriParty_59, Polo2Bam_66, SeaLumen_65, TripleJ_59,

Summary by start number:

Start 14:

- Found in 1 of 20 (5.0%) of genes in pham
- No Manual Annotations of this start.
- Called 100.0% of time when present
- Phage (with cluster) where this start called: Nyilah_79 (AY),

Start 27:

- Found in 4 of 20 (20.0%) of genes in pham
- Manual Annotations of this start: 1 of 10
- Called 25.0% of time when present
- Phage (with cluster) where this start called: Mantra_56 (F1),

Start 29:

- Found in 1 of 20 (5.0%) of genes in pham
- Manual Annotations of this start: 1 of 10
- Called 100.0% of time when present
- Phage (with cluster) where this start called: RedBird_58 (F1),

Start 31:

- Found in 5 of 20 (25.0%) of genes in pham
- No Manual Annotations of this start.
- Called 40.0% of time when present
- Phage (with cluster) where this start called: GUPitcher_56 (FJ), PetriParty_59 (FJ),

Start 33:

- Found in 6 of 20 (30.0%) of genes in pham
- Manual Annotations of this start: 3 of 10
- Called 50.0% of time when present
- Phage (with cluster) where this start called: DreamEater_55 (FJ), Kukla_58 (FJ), TripleJ_59 (FJ),

Start 35:

- Found in 1 of 20 (5.0%) of genes in pham
- Manual Annotations of this start: 1 of 10
- Called 100.0% of time when present
- Phage (with cluster) where this start called: Alatato_58 (FB),

Start 36:

- Found in 8 of 20 (40.0%) of genes in pham
- Manual Annotations of this start: 4 of 10
- Called 75.0% of time when present
- Phage (with cluster) where this start called: DearBasketball_57 (DY), DinoNuggs_55 (DY), DonkeyMan_53 (DY), Jojo24_52 (DY), Reyja_55 (DY), Tarzan_53 (DY),

Start 37:

- Found in 2 of 20 (10.0%) of genes in pham
- No Manual Annotations of this start.
- Called 100.0% of time when present
- Phage (with cluster) where this start called: GMA4_56 (singleton), GMA5_23 (CW2),

Start 39:

- Found in 5 of 20 (25.0%) of genes in pham
- No Manual Annotations of this start.

- Called 60.0% of time when present
- Phage (with cluster) where this start called: Enzomatic_67 (F1), Polo2Bam_66 (F1), SeaLumen_65 (F1),

Summary by clusters:

There are 7 clusters represented in this pham: F1, singleton, CW2, FB, DY, AY, FJ,

Info for manual annotations of cluster DY:

- Start number 36 was manually annotated 4 times for cluster DY.

Info for manual annotations of cluster F1:

- Start number 27 was manually annotated 1 time for cluster F1.
- Start number 29 was manually annotated 1 time for cluster F1.

Info for manual annotations of cluster FB:

- Start number 35 was manually annotated 1 time for cluster FB.

Info for manual annotations of cluster FJ:

- Start number 33 was manually annotated 3 times for cluster FJ.

Gene Information:

Gene: Alatato_58 Start: 32911, Stop: 33129, Start Num: 35

Candidate Starts for Alatato_58:

(26, 32875), (Start: 35 @32911 has 1 MA's), (46, 33085),

Gene: DearBasketball_57 Start: 35676, Stop: 35882, Start Num: 36

Candidate Starts for DearBasketball_57:

(7, 35469), (20, 35598), (21, 35601), (Start: 36 @35676 has 4 MA's), (44, 35805), (45, 35814), (47, 35865),

Gene: DinoNuggs_55 Start: 35345, Stop: 35551, Start Num: 36

Candidate Starts for DinoNuggs_55:

(7, 35138), (20, 35267), (21, 35270), (Start: 36 @35345 has 4 MA's), (44, 35474), (45, 35483), (47, 35534),

Gene: DonkeyMan_53 Start: 34757, Stop: 34960, Start Num: 36

Candidate Starts for DonkeyMan_53:

(1, 34253), (2, 34328), (3, 34379), (5, 34469), (20, 34679), (21, 34682), (Start: 36 @34757 has 4 MA's), (44, 34883), (47, 34943),

Gene: DreamEater_55 Start: 36244, Stop: 36471, Start Num: 33

Candidate Starts for DreamEater_55:

(22, 36187), (23, 36196), (31, 36226), (Start: 33 @36244 has 3 MA's), (34, 36250), (49, 36451),

Gene: Enzomatic_67 Start: 40234, Stop: 40425, Start Num: 39

Candidate Starts for Enzomatic_67:

(10, 40060), (13, 40093), (15, 40108), (16, 40111), (24, 40150), (25, 40153), (Start: 27 @40174 has 1 MA's), (39, 40234), (40, 40267), (42, 40309), (43, 40315), (48, 40411),

Gene: GMA4_56 Start: 35967, Stop: 36167, Start Num: 37

Candidate Starts for GMA4_56:

(30, 35922), (32, 35940), (37, 35967), (44, 36072),

Gene: GMA5_23 Start: 15324, Stop: 15518, Start Num: 37

Candidate Starts for GMA5_23:

(37, 15324), (40, 15357), (44, 15423), (45, 15432),

Gene: GUPitcher_56 Start: 36340, Stop: 36585, Start Num: 31

Candidate Starts for GUPitcher_56:

(22, 36301), (23, 36310), (31, 36340), (Start: 33 @36358 has 3 MA's), (49, 36565),

Gene: Jojo24_52 Start: 34059, Stop: 34259, Start Num: 36

Candidate Starts for Jojo24_52:

(7, 33852), (20, 33981), (21, 33984), (Start: 36 @34059 has 4 MA's), (43, 34164), (44, 34182), (47, 34242),

Gene: Kukla_58 Start: 35826, Stop: 36047, Start Num: 33

Candidate Starts for Kukla_58:

(31, 35808), (Start: 33 @35826 has 3 MA's), (50, 36042),

Gene: Mantra_56 Start: 39272, Stop: 39523, Start Num: 27

Candidate Starts for Mantra_56:

(10, 39158), (13, 39191), (15, 39206), (16, 39209), (24, 39248), (25, 39251), (Start: 27 @39272 has 1 MA's), (Start: 36 @39305 has 4 MA's), (38, 39326), (39, 39332), (40, 39365), (42, 39407), (43, 39413), (48, 39509),

Gene: Nyilah_79 Start: 42075, Stop: 42341, Start Num: 14

Candidate Starts for Nyilah_79:

(6, 41952), (14, 42075), (18, 42108), (21, 42123), (Start: 33 @42177 has 3 MA's),

Gene: PetriParty_59 Start: 35832, Stop: 36071, Start Num: 31

Candidate Starts for PetriParty_59:

(4, 35535), (11, 35697), (22, 35793), (31, 35832), (Start: 33 @35850 has 3 MA's),

Gene: Polo2Bam_66 Start: 40234, Stop: 40425, Start Num: 39

Candidate Starts for Polo2Bam_66:

(10, 40060), (13, 40093), (15, 40108), (16, 40111), (24, 40150), (25, 40153), (Start: 27 @40174 has 1 MA's), (39, 40234), (40, 40267), (42, 40309), (43, 40315), (48, 40411),

Gene: RedBird_58 Start: 39602, Stop: 39850, Start Num: 29

Candidate Starts for RedBird_58:

(8, 39425), (12, 39494), (17, 39545), (19, 39557), (28, 39599), (Start: 29 @39602 has 1 MA's), (Start: 36 @39632 has 4 MA's), (39, 39659), (40, 39692), (42, 39734), (43, 39740), (48, 39836),

Gene: Reyja_55 Start: 35345, Stop: 35551, Start Num: 36

Candidate Starts for Reyja_55:

(7, 35138), (20, 35267), (21, 35270), (Start: 36 @35345 has 4 MA's), (44, 35474), (45, 35483), (47, 35534),

Gene: SeaLumen_65 Start: 40234, Stop: 40425, Start Num: 39

Candidate Starts for SeaLumen_65:

(10, 40060), (13, 40093), (15, 40108), (16, 40111), (24, 40150), (25, 40153), (Start: 27 @40174 has 1 MA's), (39, 40234), (40, 40267), (42, 40309), (43, 40315), (48, 40411),

Gene: Tarzan_53 Start: 34012, Stop: 34215, Start Num: 36

Candidate Starts for Tarzan_53:

(1, 33508), (2, 33583), (3, 33634), (5, 33724), (20, 33934), (21, 33937), (Start: 36 @34012 has 4 MA's), (44, 34138), (47, 34198),

Gene: TripleJ_59 Start: 35779, Stop: 36006, Start Num: 33

Candidate Starts for TripleJ_59:

(9, 35596), (22, 35722), (31, 35761), (Start: 33 @35779 has 3 MA's), (41, 35869),