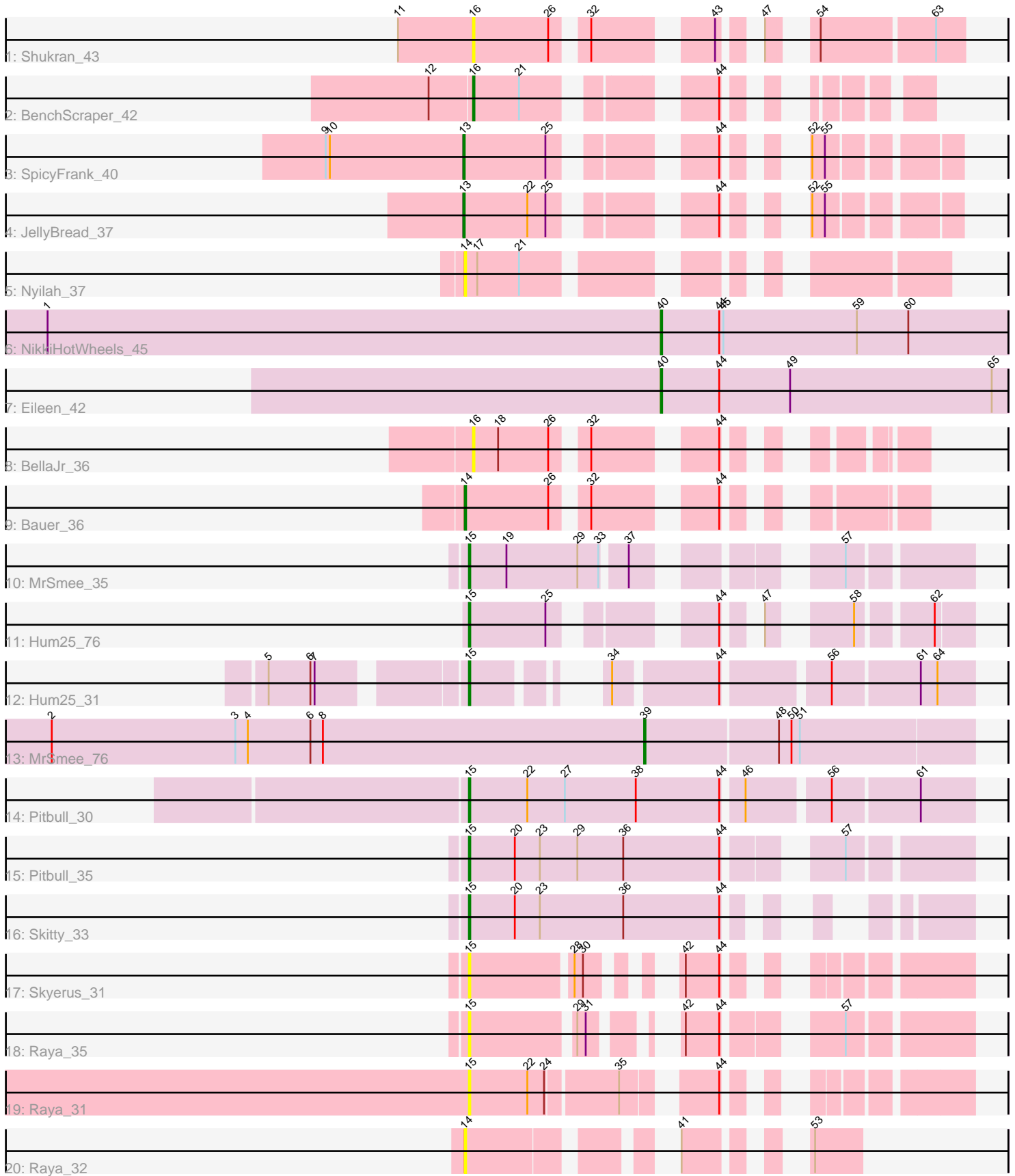


Pham 312041



Note: Tracks are now grouped by subcluster and scaled. Switching in subcluster is indicated by changes in track color. Track scale is now set by default to display the region 30 bp upstream of start 1 to 30 bp downstream of the last possible start. If this default region is judged to be packed too tightly with annotated starts, the track will be further scaled to only show that region of the ORF with annotated starts. This action will be indicated by adding "Zoomed" to the title. For starts, yellow indicates the location of called starts comprised solely of Glimmer/GeneMark auto-annotations, green indicates the location of called starts with at least 1 manual gene annotation.

Pham 312041 Report

This analysis was run 06/27/26 on database version 652.

Pham number 312041 has 20 members, 7 are drafts.

Phages represented in each track:

- Track 1 : Shukran_43
- Track 2 : BenchScraper_42
- Track 3 : SpicyFrank_40
- Track 4 : JellyBread_37
- Track 5 : Nyilah_37
- Track 6 : NikkiHotWheels_45
- Track 7 : Eileen_42
- Track 8 : BellaJr_36
- Track 9 : Bauer_36
- Track 10 : MrSmee_35
- Track 11 : Hum25_76
- Track 12 : Hum25_31
- Track 13 : MrSmee_76
- Track 14 : Pitbull_30
- Track 15 : Pitbull_35
- Track 16 : Skitty_33
- Track 17 : Skyerus_31
- Track 18 : Raya_35
- Track 19 : Raya_31
- Track 20 : Raya_32

Summary of Final Annotations (See graph section above for start numbers):

The start number called the most often in the published annotations is 15, it was called in 6 of the 13 non-draft genes in the pham.

Genes that call this "Most Annotated" start:

- Hum25_31, Hum25_76, MrSmee_35, Pitbull_30, Pitbull_35, Raya_31, Raya_35, Skitty_33, Skyerus_31,

Genes that have the "Most Annotated" start but do not call it:

-

Genes that do not have the "Most Annotated" start:

- Bauer_36, BellaJr_36, BenchScraper_42, Eileen_42, JellyBread_37, MrSmee_76, NikkiHotWheels_45, Nyilah_37, Raya_32, Shukran_43, SpicyFrank_40,

Summary by start number:

Start 13:

- Found in 2 of 20 (10.0%) of genes in pham
- Manual Annotations of this start: 2 of 13
- Called 100.0% of time when present
- Phage (with cluster) where this start called: JellyBread_37 (AY), SpicyFrank_40 (AY),

Start 14:

- Found in 3 of 20 (15.0%) of genes in pham
- Manual Annotations of this start: 1 of 13
- Called 100.0% of time when present
- Phage (with cluster) where this start called: Bauer_36 (FN), Nyilah_37 (AY), Raya_32 (FQ2),

Start 15:

- Found in 9 of 20 (45.0%) of genes in pham
- Manual Annotations of this start: 6 of 13
- Called 100.0% of time when present
- Phage (with cluster) where this start called: Hum25_31 (FQ1), Hum25_76 (FQ1), MrSmee_35 (FQ1), Pitbull_30 (FQ1), Pitbull_35 (FQ1), Raya_31 (FQ2), Raya_35 (FQ2), Skitty_33 (FQ1), Skyerus_31 (FQ2),

Start 16:

- Found in 3 of 20 (15.0%) of genes in pham
- Manual Annotations of this start: 1 of 13
- Called 100.0% of time when present
- Phage (with cluster) where this start called: BellaJr_36 (FN), BenchScraper_42 (AY), Shukran_43 (AY),

Start 39:

- Found in 1 of 20 (5.0%) of genes in pham
- Manual Annotations of this start: 1 of 13
- Called 100.0% of time when present
- Phage (with cluster) where this start called: MrSmee_76 (FQ1),

Start 40:

- Found in 2 of 20 (10.0%) of genes in pham
- Manual Annotations of this start: 2 of 13
- Called 100.0% of time when present
- Phage (with cluster) where this start called: Eileen_42 (FA), NikkiHotWheels_45 (FA),

Summary by clusters:

There are 5 clusters represented in this pham: AY, FA, FQ1, FQ2, FN,

Info for manual annotations of cluster AY:

- Start number 13 was manually annotated 2 times for cluster AY.

- Start number 16 was manually annotated 1 time for cluster AY.

Info for manual annotations of cluster FA:

- Start number 40 was manually annotated 2 times for cluster FA.

Info for manual annotations of cluster FN:

- Start number 14 was manually annotated 1 time for cluster FN.

Info for manual annotations of cluster FQ1:

- Start number 15 was manually annotated 6 times for cluster FQ1.
- Start number 39 was manually annotated 1 time for cluster FQ1.

Gene Information:

Gene: Bauer_36 Start: 26236, Stop: 26484, Start Num: 14

Candidate Starts for Bauer_36:

(Start: 14 @26236 has 1 MA's), (26, 26296), (32, 26314), (44, 26386),

Gene: BellaJr_36 Start: 27299, Stop: 27532, Start Num: 16

Candidate Starts for BellaJr_36:

(Start: 16 @27299 has 1 MA's), (18, 27317), (26, 27353), (32, 27371), (44, 27443),

Gene: BenchScraper_42 Start: 27914, Stop: 27690, Start Num: 16

Candidate Starts for BenchScraper_42:

(12, 27944), (Start: 16 @27914 has 1 MA's), (21, 27881), (44, 27779),

Gene: Eileen_42 Start: 28759, Stop: 29007, Start Num: 40

Candidate Starts for Eileen_42:

(Start: 40 @28759 has 2 MA's), (44, 28801), (49, 28852), (65, 28996),

Gene: Hum25_76 Start: 39195, Stop: 39458, Start Num: 15

Candidate Starts for Hum25_76:

(Start: 15 @39195 has 6 MA's), (25, 39249), (44, 39333), (47, 39345), (58, 39387), (62, 39432),

Gene: Hum25_31 Start: 23411, Stop: 23121, Start Num: 15

Candidate Starts for Hum25_31:

(5, 23534), (6, 23504), (7, 23501), (Start: 15 @23411 has 6 MA's), (34, 23354), (44, 23285), (56, 23219), (61, 23159), (64, 23147),

Gene: JellyBread_37 Start: 26498, Stop: 26244, Start Num: 13

Candidate Starts for JellyBread_37:

(Start: 13 @26498 has 2 MA's), (22, 26453), (25, 26441), (44, 26357), (52, 26333), (55, 26324),

Gene: MrSmee_35 Start: 26014, Stop: 25721, Start Num: 15

Candidate Starts for MrSmee_35:

(Start: 15 @26014 has 6 MA's), (19, 25987), (29, 25936), (33, 25921), (37, 25906), (57, 25801),

Gene: MrSmee_76 Start: 39736, Stop: 39966, Start Num: 39

Candidate Starts for MrSmee_76:

(2, 39310), (3, 39442), (4, 39451), (6, 39496), (8, 39505), (Start: 39 @39736 has 1 MA's), (48, 39829), (50, 39838), (51, 39844),

Gene: NikkiHotWheels_45 Start: 29764, Stop: 30012, Start Num: 40

Candidate Starts for NikkiHotWheels_45:

(1, 29323), (Start: 40 @29764 has 2 MA's), (44, 29806), (45, 29809), (59, 29905), (60, 29941),

Gene: Nyilah_37 Start: 26243, Stop: 25974, Start Num: 14

Candidate Starts for Nyilah_37:

(Start: 14 @26243 has 1 MA's), (17, 26234), (21, 26204),

Gene: Pitbull_30 Start: 22819, Stop: 22475, Start Num: 15

Candidate Starts for Pitbull_30:

(Start: 15 @22819 has 6 MA's), (22, 22777), (27, 22750), (38, 22699), (44, 22639), (46, 22627), (56, 22573), (61, 22513),

Gene: Pitbull_35 Start: 25095, Stop: 24775, Start Num: 15

Candidate Starts for Pitbull_35:

(Start: 15 @25095 has 6 MA's), (20, 25062), (23, 25044), (29, 25017), (36, 24984), (44, 24915), (57, 24855),

Gene: Raya_35 Start: 24693, Stop: 24421, Start Num: 15

Candidate Starts for Raya_35:

(Start: 15 @24693 has 6 MA's), (29, 24624), (31, 24618), (42, 24585), (44, 24561), (57, 24501),

Gene: Raya_31 Start: 22832, Stop: 22557, Start Num: 15

Candidate Starts for Raya_31:

(Start: 15 @22832 has 6 MA's), (22, 22790), (24, 22778), (35, 22730), (44, 22679),

Gene: Raya_32 Start: 23026, Stop: 22829, Start Num: 14

Candidate Starts for Raya_32:

(Start: 14 @23026 has 1 MA's), (41, 22915), (53, 22861),

Gene: Shukran_43 Start: 28688, Stop: 28416, Start Num: 16

Candidate Starts for Shukran_43:

(11, 28742), (Start: 16 @28688 has 1 MA's), (26, 28634), (32, 28616), (43, 28547), (47, 28532), (54, 28514), (63, 28436),

Gene: Skitty_33 Start: 24641, Stop: 24363, Start Num: 15

Candidate Starts for Skitty_33:

(Start: 15 @24641 has 6 MA's), (20, 24608), (23, 24590), (36, 24530), (44, 24461),

Gene: Skyerus_31 Start: 22811, Stop: 22557, Start Num: 15

Candidate Starts for Skyerus_31:

(Start: 15 @22811 has 6 MA's), (28, 22742), (30, 22736), (42, 22703), (44, 22679),

Gene: SpicyFrank_40 Start: 27728, Stop: 27474, Start Num: 13

Candidate Starts for SpicyFrank_40:

(9, 27827), (10, 27824), (Start: 13 @27728 has 2 MA's), (25, 27671), (44, 27587), (52, 27563), (55, 27554),