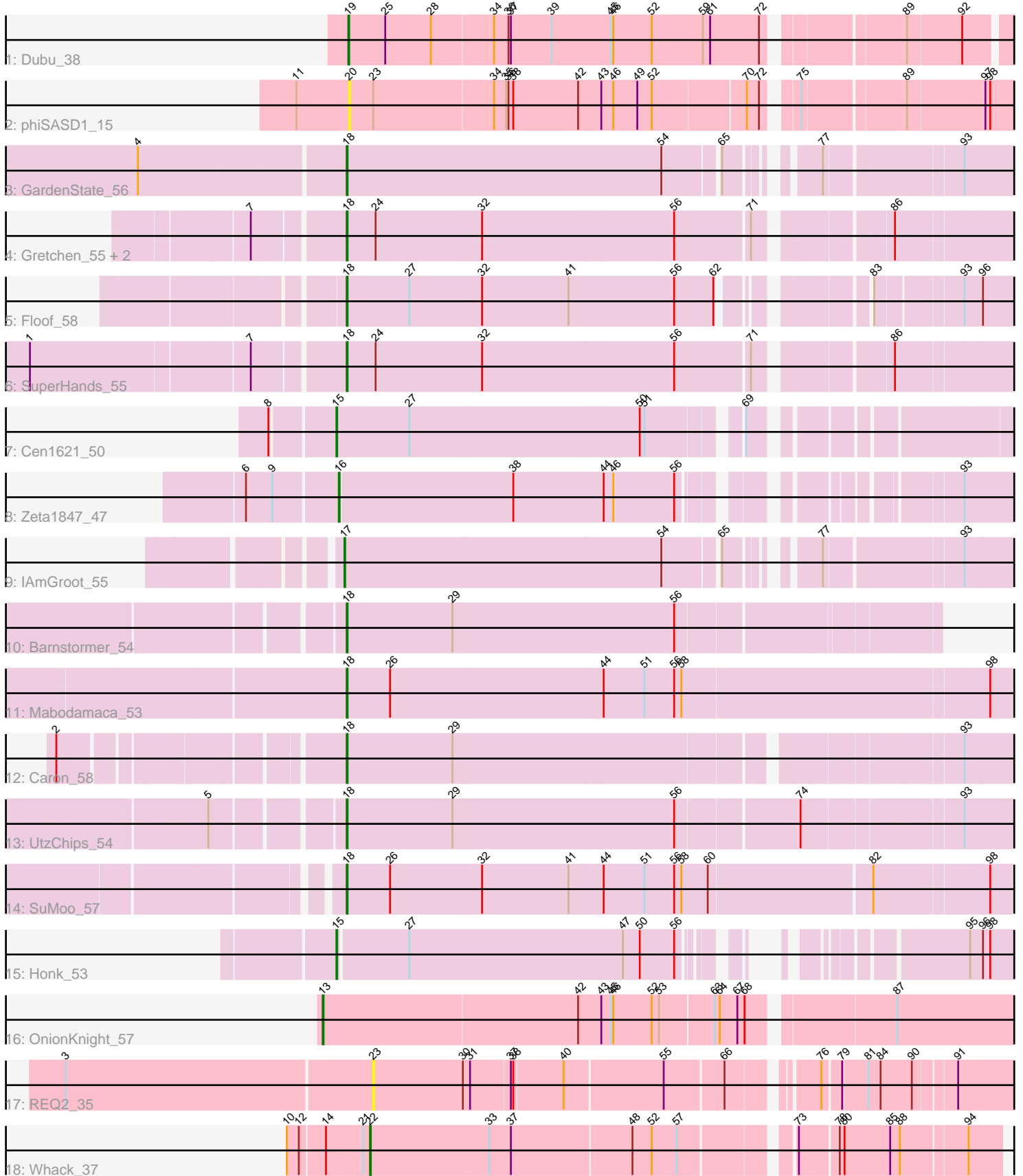


# Pham 312042



Note: Tracks are now grouped by subcluster and scaled. Switching in subcluster is indicated by changes in track color. Track scale is now set by default to display the region 30 bp upstream of start 1 to 30 bp downstream of the last possible start. If this default region is judged to be packed too tightly with annotated starts, the track will be further scaled to only show that region of the ORF with annotated starts. This action will be indicated by adding "Zoomed" to the title. For starts, yellow indicates the location of called starts comprised solely of Glimmer/GeneMark auto-annotations, green indicates the location of called starts with at least 1 manual gene annotation.

## Pham 312042 Report

This analysis was run 06/27/26 on database version 652.

Pham number 312042 has 20 members, 2 are drafts.

Phages represented in each track:

- Track 1 : Dubu\_38
- Track 2 : phiSASD1\_15
- Track 3 : GardenState\_56
- Track 4 : Gretchen\_55, Percival\_56, Forester\_54
- Track 5 : Floof\_58
- Track 6 : SuperHands\_55
- Track 7 : Cen1621\_50
- Track 8 : Zeta1847\_47
- Track 9 : IAmGroot\_55
- Track 10 : Barnstormer\_54
- Track 11 : Mabodamaca\_53
- Track 12 : Caron\_58
- Track 13 : UtzChips\_54
- Track 14 : SuMoo\_57
- Track 15 : Honk\_53
- Track 16 : OnionKnight\_57
- Track 17 : REQ2\_35
- Track 18 : Whack\_37

### ***Summary of Final Annotations (See graph section above for start numbers):***

The start number called the most often in the published annotations is 18, it was called in 11 of the 18 non-draft genes in the pham.

Genes that call this "Most Annotated" start:

- Barnstormer\_54, Caron\_58, Floof\_58, Forester\_54, GardenState\_56, Gretchen\_55, Mabodamaca\_53, Percival\_56, SuMoo\_57, SuperHands\_55, UtzChips\_54,

Genes that have the "Most Annotated" start but do not call it:

- 

Genes that do not have the "Most Annotated" start:

- Cen1621\_50, Dubu\_38, Honk\_53, IAmGroot\_55, OnionKnight\_57, REQ2\_35, Whack\_37, Zeta1847\_47, phiSASD1\_15,

## Summary by start number:

### Start 13:

- Found in 1 of 20 ( 5.0% ) of genes in pham
- Manual Annotations of this start: 1 of 18
- Called 100.0% of time when present
- Phage (with cluster) where this start called: OnionKnight\_57 (singleton),

### Start 15:

- Found in 2 of 20 ( 10.0% ) of genes in pham
- Manual Annotations of this start: 2 of 18
- Called 100.0% of time when present
- Phage (with cluster) where this start called: Cen1621\_50 (EH), Honk\_53 (EH),

### Start 16:

- Found in 1 of 20 ( 5.0% ) of genes in pham
- Manual Annotations of this start: 1 of 18
- Called 100.0% of time when present
- Phage (with cluster) where this start called: Zeta1847\_47 (EH),

### Start 17:

- Found in 1 of 20 ( 5.0% ) of genes in pham
- Manual Annotations of this start: 1 of 18
- Called 100.0% of time when present
- Phage (with cluster) where this start called: IAmGroot\_55 (EH),

### Start 18:

- Found in 11 of 20 ( 55.0% ) of genes in pham
- Manual Annotations of this start: 11 of 18
- Called 100.0% of time when present
- Phage (with cluster) where this start called: Barnstormer\_54 (EH), Caron\_58 (EH), Floop\_58 (EH), Forester\_54 (EH), GardenState\_56 (EH), Gretchen\_55 (EH), Mabodamaca\_53 (EH), Percival\_56 (EH), SuMoo\_57 (EH), SuperHands\_55 (EH), UtzChips\_54 (EH),

### Start 19:

- Found in 1 of 20 ( 5.0% ) of genes in pham
- Manual Annotations of this start: 1 of 18
- Called 100.0% of time when present
- Phage (with cluster) where this start called: Dubu\_38 (BJ),

### Start 20:

- Found in 1 of 20 ( 5.0% ) of genes in pham
- No Manual Annotations of this start.
- Called 100.0% of time when present
- Phage (with cluster) where this start called: phiSASD1\_15 (BJ),

### Start 22:

- Found in 1 of 20 ( 5.0% ) of genes in pham
- Manual Annotations of this start: 1 of 18
- Called 100.0% of time when present
- Phage (with cluster) where this start called: Whack\_37 (singleton),

Start 23:

- Found in 2 of 20 ( 10.0% ) of genes in pham
- No Manual Annotations of this start.
- Called 50.0% of time when present
- Phage (with cluster) where this start called: REQ2\_35 (singleton),

### **Summary by clusters:**

There are 3 clusters represented in this pham: singleton, EH, BJ,

Info for manual annotations of cluster BJ:

- Start number 19 was manually annotated 1 time for cluster BJ.

Info for manual annotations of cluster EH:

- Start number 15 was manually annotated 2 times for cluster EH.
- Start number 16 was manually annotated 1 time for cluster EH.
- Start number 17 was manually annotated 1 time for cluster EH.
- Start number 18 was manually annotated 11 times for cluster EH.

### **Gene Information:**

Gene: Barnstormer\_54 Start: 35694, Stop: 36401, Start Num: 18

Candidate Starts for Barnstormer\_54:

(Start: 18 @35694 has 11 MA's), (29, 35826), (56, 36099),

Gene: Caron\_58 Start: 36781, Stop: 37575, Start Num: 18

Candidate Starts for Caron\_58:

(2, 36472), (Start: 18 @36781 has 11 MA's), (29, 36913), (93, 37498),

Gene: Cen1621\_50 Start: 34557, Stop: 35321, Start Num: 15

Candidate Starts for Cen1621\_50:

(8, 34485), (Start: 15 @34557 has 2 MA's), (27, 34647), (50, 34932), (51, 34938), (69, 35034),

Gene: Dubu\_38 Start: 31665, Stop: 32426, Start Num: 19

Candidate Starts for Dubu\_38:

(Start: 19 @31665 has 1 MA's), (25, 31707), (28, 31764), (34, 31839), (36, 31857), (37, 31860), (39, 31911), (45, 31983), (46, 31986), (52, 32034), (59, 32094), (61, 32103), (72, 32163), (89, 32310), (92, 32373),

Gene: Floof\_58 Start: 37269, Stop: 38048, Start Num: 18

Candidate Starts for Floof\_58:

(Start: 18 @37269 has 11 MA's), (27, 37347), (32, 37437), (41, 37545), (56, 37674), (62, 37722), (83, 37857), (93, 37956), (96, 37977),

Gene: Forester\_54 Start: 37654, Stop: 38451, Start Num: 18

Candidate Starts for Forester\_54:

(7, 37549), (Start: 18 @37654 has 11 MA's), (24, 37690), (32, 37822), (56, 38059), (71, 38149), (86, 38293),

Gene: GardenState\_56 Start: 36236, Stop: 36994, Start Num: 18

Candidate Starts for GardenState\_56:

(4, 35990), (Start: 18 @36236 has 11 MA's), (54, 36626), (65, 36689), (77, 36770), (93, 36929),

Gene: Gretchen\_55 Start: 37328, Stop: 38125, Start Num: 18

Candidate Starts for Gretchen\_55:

(7, 37223), (Start: 18 @37328 has 11 MA's), (24, 37364), (32, 37496), (56, 37733), (71, 37823), (86, 37967),

Gene: Honk\_53 Start: 34819, Stop: 35538, Start Num: 15

Candidate Starts for Honk\_53:

(Start: 15 @34819 has 2 MA's), (27, 34903), (47, 35167), (50, 35188), (56, 35230), (95, 35458), (96, 35473), (98, 35482),

Gene: IAmGroot\_55 Start: 36441, Stop: 37202, Start Num: 17

Candidate Starts for IAmGroot\_55:

(Start: 17 @36441 has 1 MA's), (54, 36834), (65, 36897), (77, 36978), (93, 37137),

Gene: Mabodamaca\_53 Start: 37633, Stop: 38448, Start Num: 18

Candidate Starts for Mabodamaca\_53:

(Start: 18 @37633 has 11 MA's), (26, 37687), (44, 37951), (51, 38002), (56, 38038), (58, 38047), (98, 38422),

Gene: OnionKnight\_57 Start: 37093, Stop: 37911, Start Num: 13

Candidate Starts for OnionKnight\_57:

(Start: 13 @37093 has 1 MA's), (42, 37408), (43, 37435), (45, 37447), (46, 37450), (52, 37498), (53, 37507), (63, 37567), (64, 37573), (67, 37594), (68, 37603), (87, 37768),

Gene: Percival\_56 Start: 37164, Stop: 37961, Start Num: 18

Candidate Starts for Percival\_56:

(7, 37059), (Start: 18 @37164 has 11 MA's), (24, 37200), (32, 37332), (56, 37569), (71, 37659), (86, 37803),

Gene: REQ2\_35 Start: 28975, Stop: 28247, Start Num: 23

Candidate Starts for REQ2\_35:

(3, 29350), (23, 28975), (30, 28864), (31, 28855), (37, 28807), (38, 28804), (40, 28747), (55, 28627), (66, 28558), (76, 28468), (79, 28447), (81, 28417), (84, 28402), (90, 28363), (91, 28315),

Gene: SuMoo\_57 Start: 37124, Stop: 37933, Start Num: 18

Candidate Starts for SuMoo\_57:

(Start: 18 @37124 has 11 MA's), (26, 37178), (32, 37292), (41, 37400), (44, 37442), (51, 37493), (56, 37529), (58, 37538), (60, 37571), (82, 37769), (98, 37907),

Gene: SuperHands\_55 Start: 37819, Stop: 38616, Start Num: 18

Candidate Starts for SuperHands\_55:

(1, 37450), (7, 37714), (Start: 18 @37819 has 11 MA's), (24, 37855), (32, 37987), (56, 38224), (71, 38314), (86, 38458),

Gene: UtzChips\_54 Start: 35679, Stop: 36491, Start Num: 18

Candidate Starts for UtzChips\_54:

(5, 35541), (Start: 18 @35679 has 11 MA's), (29, 35811), (56, 36084), (74, 36228), (93, 36414),

Gene: Whack\_37 Start: 30470, Stop: 29745, Start Num: 22

Candidate Starts for Whack\_37:

(10, 30566), (12, 30551), (14, 30521), (21, 30479), (Start: 22 @30470 has 1 MA's), (33, 30323), (37, 30296), (48, 30152), (52, 30128), (57, 30098), (73, 29981), (78, 29936), (80, 29930), (85, 29873), (88, 29861), (94, 29786),

Gene: Zeta1847\_47 Start: 34179, Stop: 34964, Start Num: 16

Candidate Starts for Zeta1847\_47:

(6, 34071), (9, 34104), (Start: 16 @34179 has 1 MA's), (38, 34392), (44, 34503), (46, 34515), (56, 34590), (93, 34854),

Gene: phiSASD1\_15 Start: 32286, Stop: 33056, Start Num: 20

Candidate Starts for phiSASD1\_15:

(11, 32220), (20, 32286), (23, 32313), (34, 32460), (35, 32475), (36, 32478), (38, 32484), (42, 32565), (43, 32592), (46, 32607), (49, 32637), (52, 32655), (70, 32763), (72, 32778), (75, 32808), (89, 32928), (97, 33018), (98, 33024),